

UNITED STATES  
DEPARTMENT OF THE INTERIOR  
BUREAU OF LAND MANAGEMENT

OTHER INSTRUCTIONS  
reverse side

Expires August 31, 1985

APPLICATION FOR PERMIT TO DRILL, DEEPEN, OR PLUG BACK

1a. TYPE OF WORK  
DRILL ☒ DEEPEN ☐ PLUG BACK ☐

b. TYPE OF WELL  
OIL WELL ☐ GAS WELL ☒ OTHER ☐ SINGLE ZONE ☒ MULTIPLE ZONE ☐

2. NAME OF OPERATOR  
LTD 303-583-4000 (505) 325-5599  
SG INTERESTS I/MARALEX RESOURCES, INC.

3. ADDRESS OF OPERATOR  
PO Box 421, Blanco, New Mexico 87412-0421

4. LOCATION OF WELL (Report location clearly and in accordance with any State requirements.)\*  
At surface  
1214' FNL, 1503' FEL (NW NE) Sec 5-26N-12W  
At proposed prod. zone  
Same

14. DISTANCE IN MILES AND DIRECTION FROM NEAREST TOWN OR POST OFFICE\*  
Approx 22 miles southeast of Farmington, NM

10. DISTANCE FROM PROPOSED\*  
LOCATION TO NEAREST  
PROPERTY OR LEASE LINE, FT.  
(Also to nearest drlg. unit line, if any) 1214'  
16. NO. OF ACRES IN LEASE 478.32

18. DISTANCE FROM PROPOSED LOCATION\*  
TO NEAREST WELL, DRILLING, COMPLETED,  
OR APPLIED FOR, ON THIS LEASE, FT. Approx 1,000'  
19. PROPOSED DEPTH 1344'

21. ELEVATIONS (Show whether DF, RT, GR, etc.)  
GL 5929'

23. PROPOSED CASING AND CEMENTING PROGRAM

SIZE OF HOLE	SIZE OF CASING	WEIGHT PER FOOT	SETTING DEPTH
8-3/4"	7"	20# J-55	120'
6-1/4"	4-1/2"	10.5# J-55	TD

17. NO. OF ACRES ASSIGNED  
TO THIS WELL 1/320 314.12  
20. ROTARY OR CABLE TOOLS Rotary  
22. APPROX. DATE WORK WILL START\*  
Upon BLM Approval

QUANTITY OF CEMENT  
50 sx Class B  
210 sx Class B

Maralex Resources, Inc. proposes to drill a vertical well to develop the Fruitland Coal Formation at the above described site in accordance with the attached drilling and surface use programs.

As part of the NAPI Project, this location has already been archaeologically surveyed. No additional archaeology reports will be submitted with this APD.

All of the access road for this well is located on this lease, so no right-of-way application is required.

RECEIVED  
DEC - 7 1993

RECEIVED  
NOV 22 1993

cc: BIA

DEC - 7 1993

OIL CON. DIV  
DIST. 3

IN ABOVE SPACE DESCRIBE PROPOSED PROGRAM: If proposal is to deepen or plug back, give location of old productive zone and proposed new productive zone. If proposal is to drill or deepen, give location of new productive zone and true vertical depths. Give blowout preventer program, if any.

24. SIGNED D. R. Reimers TITLE Engineering Manager DATE October 14, 1993  
(This space for Federal or State office use)

PERMIT NO. \_\_\_\_\_ APPROVAL DATE \_\_\_\_\_  
APPROVED BY \_\_\_\_\_ TITLE \_\_\_\_\_  
CONDITIONS OF APPROVAL, IF ANY: \_\_\_\_\_

APPROVED  
AS AMENDED

NOV 17 1993

DISTRICT MANAGER

\*See Instructions On Reverse Side

Title 18 U.S.C. Section 1001 makes it a crime for any person knowingly and willfully to make to any department or agency of the United States any false, fictitious or fraudulent statements or representations as to any matter within its jurisdiction.

NMOCD

10/12/21  
10/12/21  
VIA AIR MAIL  
E. C. C.

10/12/21  
10/12/21

10/12/21  
10/12/21  
VIA AIR MAIL  
E. C. C.

Submit to Appropriate  
District Office  
State Lease - 4 copies  
Fee Lease - 3 copies

State of New Mexico  
Energy, Minerals and Natural Resources Department

Form C-102  
Revised 1-1-89

OIL CONSERVATION DIVISION

P.O. Box 2088  
Santa Fe, New Mexico 87504-2088

DISTRICT I  
P.O. Box 1980, Hobbs, NM 88240

DISTRICT II  
P.O. Drawer DD, Artesia, NM 88210

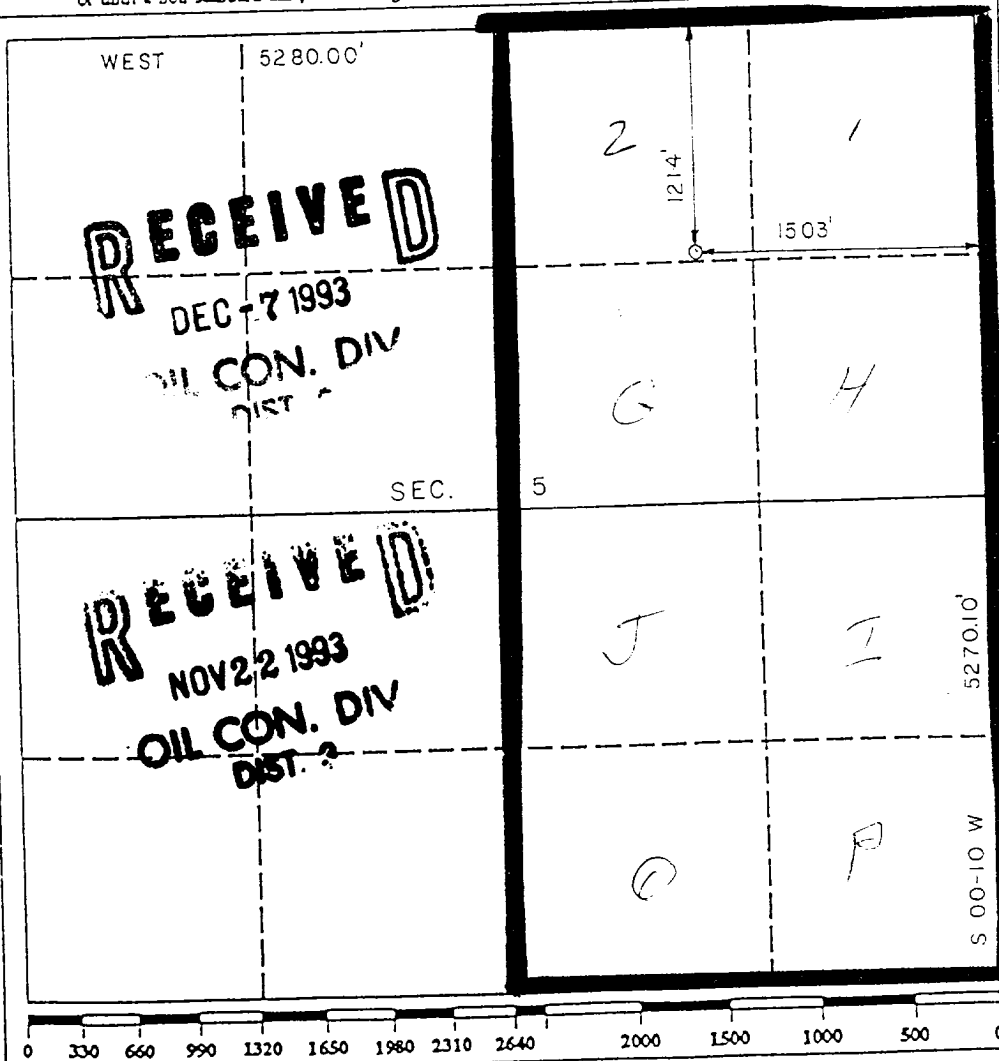
DISTRICT III  
1000 Rio Brazos Rd., Aztec, NM 87410

WELL LOCATION AND ACREAGE DEDICATION PLAT

All Distances must be from the outer boundaries of the section

Operator <b>MARALEX RESOURCES, INC. <sup>LTD</sup> 56 INTERESTS</b>			Lease W. BISTI 26-12-5	Well No. 1
Unit Letter B	Section 5	Township 26 NORTH	Range 12 WEST	County SAN JUAN
Actual Footage Location of Well: 1214 feet from the NORTH line and 1503 feet from the EAST line				
Ground level Elev. 5929	Producing Formation Fruitland		Pool Basin Fruitland Coal	Dedicated Acreage: 320 3/4 12 Acres

- Outline the acreage dedicated to the subject well by colored pencil or hatchure marks on the plat below.
- If more than one lease is dedicated to the well, outline each and identify the ownership thereof (both as to working interest and royalty).
- If more than one lease of different ownership is dedicated to the well, have the interest of all owners been consolidated by communitization, unitization, force-pooling, etc.?  
☐ Yes ☐ No If answer is "yes" type of consolidation \_\_\_\_\_  
If answer is "no" list the owners and tract descriptions which have actually been consolidated. (Use reverse side of this form if necessary).  
No allowable will be assigned to the well until all interests have been consolidated (by communitization, unitization, forced-pooling, or otherwise) or until a non-standard unit, eliminating such interest, has been approved by the Division.



OPERATOR CERTIFICATION

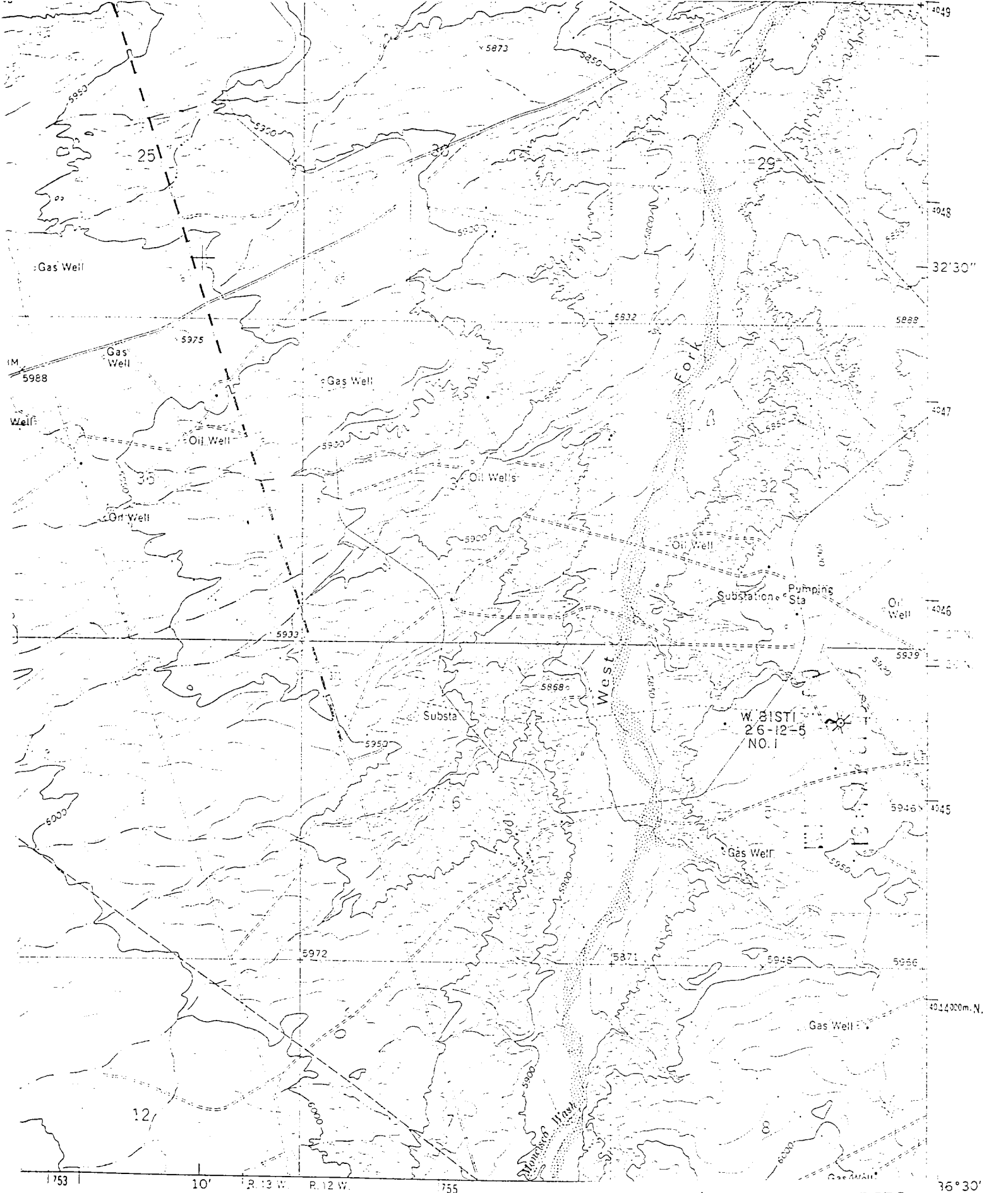
I hereby certify that the information contained herein is true and complete to the best of my knowledge and belief.

Signature  
*D. R. Reimers*  
Printed Name  
D. R. Reimers  
Position  
Engineering Manager  
Company  
Maralex Resources, Inc.  
Date  
October 14, 1993

SURVEYOR CERTIFICATION

I hereby certify that the well location shown on this plat was plotted from field notes of actual surveys made by me or under my supervision, and that the same is true and correct to the best of my knowledge and belief.

Date Surveyed  
OCTOBER 14, 1993  
Signature & Seal of Professional Surveyor  
*Roy A. Rush*  
Certificate No. 8894  
Professional Surveyor  
ROY A. RUSH  
REGISTERED PROFESSIONAL LAND SURVEYOR  
NEW MEXICO  
3894



SC INTERESTS/MARALEX RESOURCES  
WEST BISTI 26-12-5 No. 1  
1214' FNL, 1503' FEL  
SEC 5-T26N-R12W  
SAN JUAN COUNTY, NEW MEXICO

36° 30'  
30"  
42  
TRADING

$$\begin{array}{r}
 240 \\
 39.55 \\
 \hline
 239.55 \\
 239.57 \\
 \hline
 319.12 \\
 3
 \end{array}$$