

UNITED STATES
DEPARTMENT OF THE INTERIOR
BUREAU OF LAND MANAGEMENT

30-045-29120

APPLICATION FOR PERMIT TO DRILL, DEEPEN, OR PLUG BACK

1a. TYPE OF WORK

DRILL ☒DEEPEN ☐PLUG BACK ☐

b. TYPE OF WELL

OIL WELL ☐GAS WELL ☒OTHER ☐SINGLE ZONE ☒MULTIPLE ZONE ☐

2. NAME OF OPERATOR

SG INTERESTS - 1/MARALEX RESOURCES, INC. (505) 325-5599

3. ADDRESS OF OPERATOR

PO Box 421, Blanco, NM 87412-0421

4. LOCATION OF WELL (Report location clearly and in accordance with any State requirements.)

At surface

925' FSL, 1785' FWL (SE SW) Sec 17-T26N-R13W

At proposed prod. zone

Same

14. DISTANCE IN MILES AND DIRECTION FROM NEAREST TOWN OR POST OFFICE*

Approx 19 miles southeast of Farmington, NM

15. DISTANCE FROM PROPOSED*

LOCATION TO NEAREST
PROPERTY OR LEASE LINE, FT.
(Also to nearest drlg. unit line, if any)

3495'

16. NO. OF ACRES IN LEASE

2320

17. NO. OF ACRES ASSIGNED
TO THIS WELL

3/320

18. DISTANCE FROM PROPOSED LOCATION*

TO NEAREST WELL, DRILLING COMPLETED,
OR APPLIED FOR, ON THIS LEASE, FT.

1980'

19. PROPOSED DEPTH

1829'

20. ROTARY OR CABLE TOOLS

Rotary

21. ELEVATIONS (Show whether DF, RT, GR, etc.)

GL 6454'

22. APPROX. DATE WORK WILL START*

Upon BLM Approval

23. PROPOSED CASING AND CEMENTING PROGRAM				
SIZE OF HOLE	SIZE OF CASING	WEIGHT PER FOOT	SETTING DEPTH	QUANTITY OF CEMENT REQUIRED
8-3/4"	7"	20# J-55	120'	50 sx Class B
6-1/4"	4-1/2"	10.5# J-55	TD	250 sx Class B

Maralex Resources, Inc. proposes to drill a vertical well to develop the Fruitland Coal Formation at the above described site in accordance with the attached drilling and surface use programs.

As part of the NAPI Project, this location has already been archaeologically surveyed. No additional archaeology reports will be submitted with this APD.

All of the access road for this well is located on this lease, so no right-of-way application is required.

RECEIVED
MAY 23 1994

OIL CON. DIV.
DIST. 3

IN ABOVE SPACE DESCRIBE PROPOSED PROGRAM: If proposal is to deepen or plug back, give pertinent data on subsurface location and proposed new productive zone. If proposal is to drill or deepen directionally, give pertinent data on subsurface location and measured and true vertical depths. Give blowout preventer program, if any.

24.

SIGNED


D. R. Reimers

TITLE Engineering Manager

DATE October 3, 1993

(This space for Federal or State office use)

PERMIT NO.

APPROVAL DATE

APPROVED BY

TITLE

DATE

CONDITIONS OF APPROVAL, IF ANY:

*See Instructions On Reverse Side

Title 18 U.S.C. Section 1001, makes it a crime for any person knowingly and willfully to make to any department or agency of the United States any false, fictitious or fraudulent statements or representations as to any matter within its jurisdiction.

NMOCD

Submit to Appropriate
District Office
State Lease - 4 copies
Fee Lease - 3 copies

State of New Mexico
Energy, Minerals and Natural Resources Department

Form C-102
Revised 1-1-89

OIL CONSERVATION DIVISION

P.O. Box 2088
Santa Fe, New Mexico 87504-2088

DISTRICT I
P.O. Box 1930, Hobbs, NM 88240

DISTRICT II
P.O. Drawer DD, Artesia, NM 88210

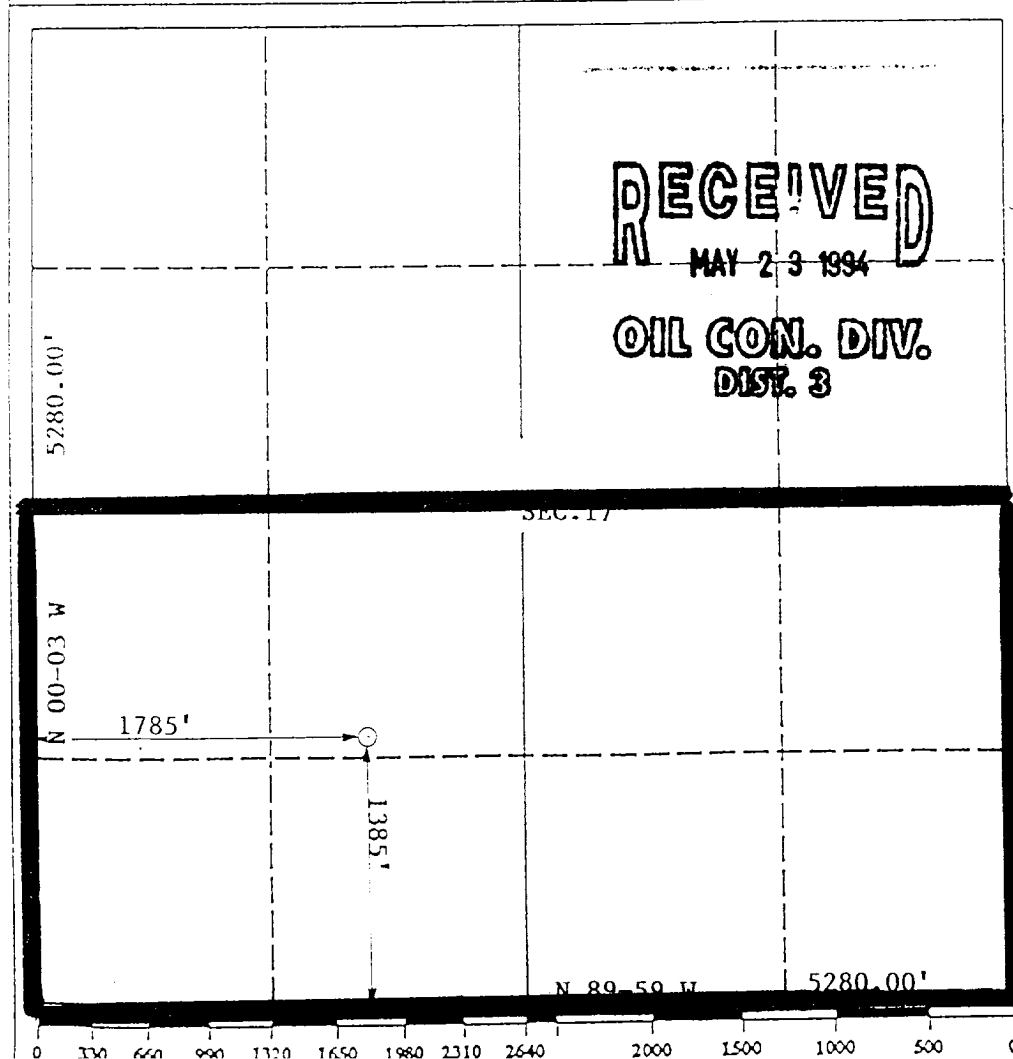
DISTRICT III
1000 Rio Brazos Rd., Aztec, NM 87410

WELL LOCATION AND ACREAGE DEDICATION PLAT

All Distances must be from the outer boundaries of the section

Operator MARLEX RESOURCES, INC.			Lease W. BISTI 26-13-17		Well No. NO. 2
Unit Letter K	Section 17	Township 26 NORTH	Range 13 WEST	County SAN JUAN	
Actual Footage Location of Well: 1385 feet from the SOUTH line and 1785 feet from the WEST line					
Ground level Elev. 6411	Producing Formation Fruitland	Pool Basin Fruitland Coal		Dedicated Acreage: 320 Acres	

- Outline the acreage dedicated to the subject well by colored pencil or hatchure marks on the plat below.
- If more than one lease is dedicated to the well, outline each and identify the ownership thereof (both as to working interest and royalty).
- If more than one lease of different ownership is dedicated to the well, have the interest of all owners been consolidated by communalization, unitization, force-pooling, etc?
☐ Yes ☐ No If answer is "yes" type of consolidation _____
If answer is "no" list the owners and tract descriptions which have actually been consolidated. (Use reverse side of this form if necessary.) _____
No allowable will be assigned to the well until all interests have been consolidated (by communalization, unitization, force-pooling, or otherwise) or until a pool-standard unit, eliminating such interest, has been approved by the Division.



OPERATOR CERTIFICATION

I hereby certify that the information contained herein is true and complete to the best of my knowledge and belief.

Signature
A. M. O'Hare
Printed Name
A. M. O'Hare
Position
President
Company
Maralex Resources, Inc.
Date
November 19, 1993

SURVEYOR CERTIFICATION

I hereby certify that the well location shown on this plat was plotted from field notes of actual surveys made by me or under my supervision, and that the same is true and correct to the best of my knowledge and belief.

Date Surveyed
NOVEMBER 18, 1993
Signature & Seal of Professional Surveyor
Roy A. Brush
ROY A. BRUSH
Certificate No. **8894**

RECEIVED
JAN 10 1900
U. S. DEPT. OF AGRICULTURE
WASHINGTON, D. C.

4357 III SE
KIRTLAND SE

