

OIL CON. DIV.
DIST. 3 - BUI

DATE: 01/10/08

KOOLHAAS

PERMIT NO. _____ APPROVAL DATE _____

APPROVED BY _____ TITLE _____ DATE _____

NOTE: This format is issued in lieu of U.S. BLM Form 3160-3

JAN 06 1995
Chip Haraden
for DISTRICT MANAGER

District I
PO Box 1980, Hobbs, NM 88241-1980
District II
PO Drawer DD, Artesia, NM 88211-0719
District III
1000 Rio Brazos Rd., Aztec, NM 87410
District IV
PO Box 2088, Santa Fe, NM 87504-2088

State of New Mexico
Energy, Minerals & Natural Resources Department

OIL CONSERVATION DIVISION
PO Box 2088
Santa Fe, NM 87504-2088

Form C-102
Revised February 21, 1994
Instructions on back
Submit to Appropriate District Office
State Lease - 4 Copies
Fee Lease - 3 Copies

AMENDED REPORT

WELL LOCATION AND ACREAGE DEDICATION PLAT

1 API Number 30-045-29206	2 Pool Code 71629	3 Pool Name Basin Fruitland Coal
4 Property Code 6819	5 Property Name Ballard	6 Well Number 501
7 OGRID No. 14538	8 Operator Name Meridian Oil Inc.	9 Elevation 6349'

10 Surface Location

UL or lot no.	Section	Township	Range	Lot Idn	Feet from the	North/South line	Feet from the	East/West line	County
N	14	26 N	9 W		1000	South	1330	West	S.J.

11 Bottom Hole Location If Different From Surface

UL or lot no.	Section	Township	Range	Lot Idn	Feet from the	North/South line	Feet from the	East/West line	County

12 Dedicated Acres W/320	13 Joint or Infill	14 Consolidation Code	15 Order No.
-----------------------------	--------------------	-----------------------	--------------

NO ALLOWABLE WILL BE ASSIGNED TO THIS COMPLETION UNTIL ALL INTERESTS HAVE BEEN CONSOLIDATED
OR A NON-STANDARD UNIT HAS BEEN APPROVED BY THE DIVISION

5280.00'	5198.82'	14	5271.42'	5212.68'	1330'	1000'	NM-03154	RECEIVED JAN 29 1995 OIL CON. DIV. DIST. 3	17 OPERATOR CERTIFICATION	
									I hereby certify that the information contained herein is true and complete to the best of my knowledge and belief	
									Signature Peggy Bradfield	
									Printed Name Peggy Bradfield Title Regulatory Affairs Date 12-19-94	
								18 SURVEYOR CERTIFICATION		
								I hereby certify that the well location shown on this plat was plotted from field notes of actual surveys made by me or under my supervision, and that the same is true and correct to the best of my knowledge and belief		
								Date of Survey 12-13-94		
								Signature and Seal of Professional Surveyer 6857		
								Certificate Number		

OPERATIONS PLAN

Well Name: Ballard #501
Location: 1000'FSL, 1330'FWL Section 14, T-26-N, R-9-W
 San Juan County, New Mexico
 Latitude 36° 29' 01", Longitude 107° 45' 46"
Formation: Basin Fruitland Coal
Elevation: 6349'GL

Formation:	Top	Bottom	Contents
Surface	Nacimiento	1214'	
Ojo Alamo	1214'	1317'	aquifer
Kirtland	1317'	1771'	
Fruitland	1771'	2011'	
Pictured Cliffs	2011'		
Total Depth	2200'		

Logging Program: Mud logs: 1700' to TD
 Dens/Neut/Por;Density/Corr;Micro/GR;Numar MR: 1700-TD
 Ind/SP/GR: to TD

Mud Program:

Interval	Type	Weight	Vis.	Fluid Loss
0- 200'	Spud	8.4-8.9	40-50	no control
200-2200'	Non-dispersed	8.4-9.5	30-60	no control

Casing Program:

Hole Size	Depth Interval	Csg.Size	Wt.	Grade
12 1/4"	0 - 200'	8 5/8"	24.0#	K-40
7 7/8"	0 - 2200'	4 1/2"	10.5#	K-55

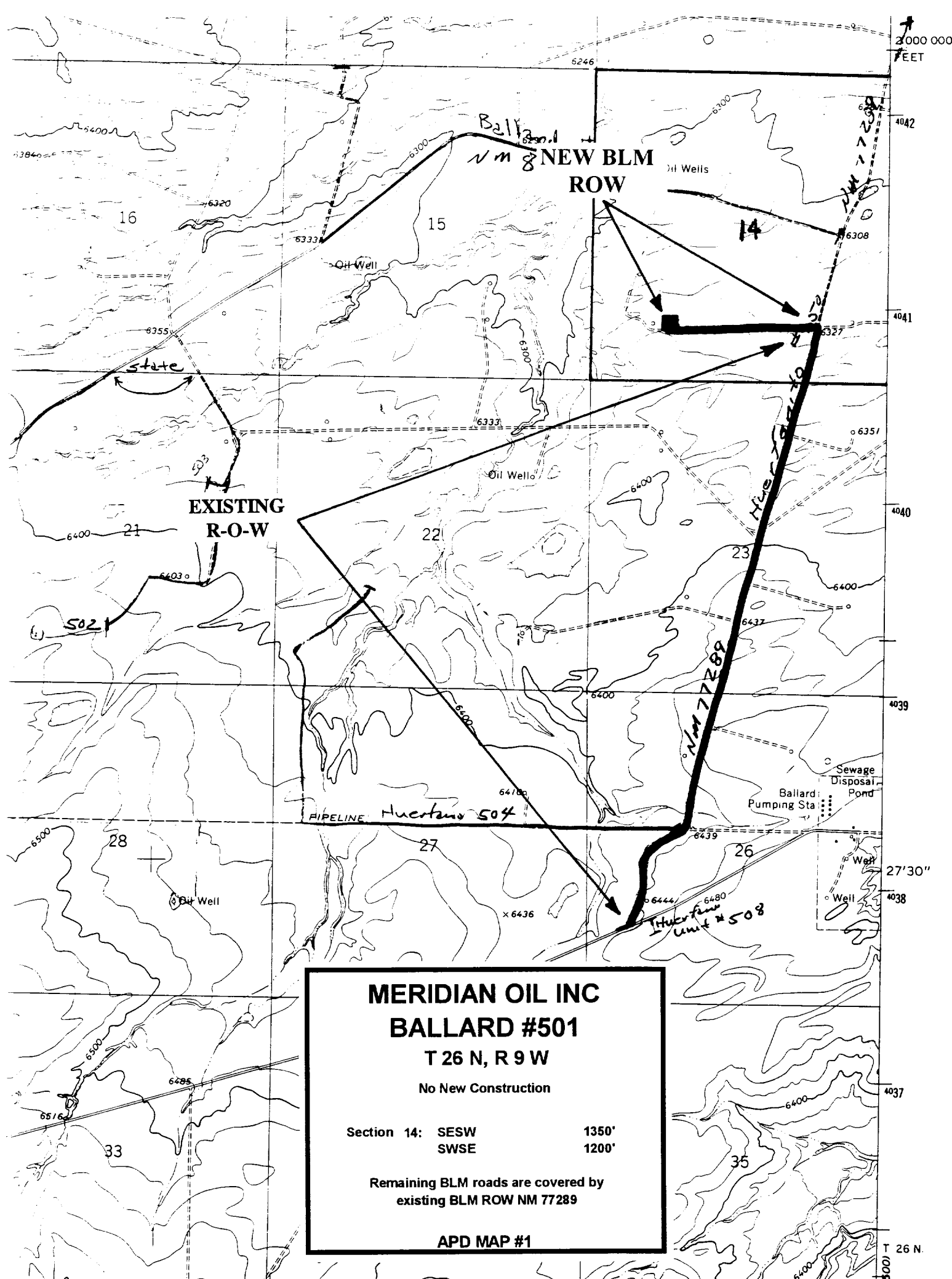
Tubing Program:

0 - 2200'	2 3/8"	4.7#	J-55
-----------	--------	------	------

Float Equipment: 8 5/8" surface casing - saw tooth guide shoe.
 Centralizers will be run in accordance with Onshore Order #2.

4 1/2" production casing - float shoe on bottom. Three centralizers run every other joint above shoe. Two centralizers run every 3rd joint to the base of the Ojo Alamo @ 1317'. Two turbolizing type centralizers - one below and one into the base of the Ojo Alamo @ 1317'. Standard centralizers thereafter every fourth joint up to the base of the surface pipe.

Wellhead Equipment: 8 5/8" x 4 1/2" x 2 3/8" x 11" 2000 psi xmas tree assembly.



MERIDIAN OIL INC

BALLARD #501

T 26 N, R 9 W

No New Construction

Section 14: SESW
SWSE

1350'
1200'

Remaining BLM roads are covered by
existing BLM ROW NM 77289

APD MAP #1