

UNITED STATES  
DEPARTMENT OF THE INTERIOR  
BUREAU OF LAND MANAGEMENT

## APPLICATION FOR PERMIT TO DRILL OR DEEPEN

## 1A. TYPE OF WORK

DRILL ☒DEEPEN ☐

## B. TYPE OF WELL

OIL  
WELL ☐GAS  
WELL ☒OTHER ☐SINGLE  
ZONE ☒MULTIPLE  
ZONE ☐

## 2. NAME OF OPERATOR

DUGAN PRODUCTION CORP. 6515

## 3. ADDRESS AND TELEPHONE NO.

P.O. Box 420, Farmington, NM 87499

4. LOCATION OF WELL (Report location clearly and in accordance with any State requirements.)\*  
At surface

1850' FSL &amp; 2510' FWL (NE/4 SW/4)

At proposed prod. zone

## 14. DISTANCE IN MILES AND DIRECTION FROM NEAREST TOWN OR POST OFFICE\*

Approx. 3 mi W of EPNG Chaco Plant

15. DISTANCE FROM PROPOSED\*  
LOCATION TO NEAREST  
PROPERTY OR LEASE LINE, FT.  
(Also to nearest drg. unit line, if any)

130'

## 16. NO. OF ACRES IN LEASE

160

17. NO. OF ACRES ASSIGNED  
TO THIS WELL

S/320

18. DISTANCE FROM PROPOSED LOCATION\* approx. 2000'  
TO NEAREST WELL, DRILLING, COMPLETED, from Dome Nav  
OR APPLIED FOR, ON THIS LEASE, FT. 13-26-13 #4 This action is subject to technical and  
procedural review pursuant to 43 CFR 3165.3  
and appeal pursuant to 43 CFR 3165.4,

## 19. PROPOSED DEPTH

1295

## 20. ROTARY OR CABLE TOOLS

Rotary

## 21. ELEVATIONS (Show whether DF, RT, GR, etc.)

6030' GL (est)

## 22. APPROX. DATE WORK WILL START\*

ASAP

## 23.

## PROPOSED CASING AND CEMENTING PROGRAM

SIZE OF HOLE	GRADE SIZE OF CASING	WEIGHT PER FOOT	SETTING DEPTH	QUANTITY OF CEMENT
9-7/8"	7"	20#	120'	50 sx (59 cu ft.) circ. to surf.
6-1/4"	4 1/2"	10.5#	1295'	160 sx (276 cu ft.) circ. to surf.

DRILLING OPERATIONS AUTHORIZED ARE  
SUBJECT TO COMPLIANCE WITH ATTACHED  
"GENERAL REQUIREMENTS"

Plan to drill a 9-7/8" hole and set 120' of 7" OD, 20#, J-55 surface casing;  
then plan to drill a 6-1/4" hole to total depth with gel-water-mud program to  
test the Fruitland Coal formation. Plan to run IES and CDL logs. If determined  
productive, will run 4 1/2", 10.5#, J-55 casing, selectively perforate, frac,  
clean out after frac and complete well.

RECEIVED  
SEP 10 1997  
OIL & GAS DIV  
BUREAU OF LAND MANAGEMENT

IN ABOVE SPACE DESCRIBE PROPOSED PROGRAM. If proposal is to deepen, give data on present productive zone and proposed new productive zone. If proposal is to drill or  
deepen directionally, give pertinent data on subsurface locations and measured and true vertical depths. Give blowout preventer program, if any.

## 24.

SIGNED

Sherman E. Dugan

TITLE

Vice President

DATE June 3, 1997

(This space for Federal or State office use)

PERMIT NO.

APPROVAL DATE

Application approval does not warrant or certify that the applicant holds legal or equitable title to those rights in the subject lease which would entitle the applicant to conduct operations thereon.  
CONDITIONS OF APPROVAL, IF ANY:

APPROVED BY

/s/ Duane W. Spender

TITLE

DATE

SEP 11 1997

\*See Instructions On Reverse Side

Title 18 U.S.C. Section 1001, makes it a crime for any person knowingly and willfully to make to any department or agency of the  
United States any false, fictitious or fraudulent statements or representations as to any matter within its jurisdiction.

NM000

District I  
PO Box 1980, Hobbs, NM 88241-1980  
District II  
PO Drawer DD, Artesia, NM 88211-0719  
District III  
1000 Rio Brazos Rd., Aztec, NM 87410  
District IV  
PO Box 2088, Santa Fe, NM 87504-2088

State of New Mexico  
Energy, Minerals & Natural Resources Department

OIL CONSERVATION DIVISION  
PO Box 2088  
Santa Fe, NM 87504-2088

Form C-102  
Revised February 21, 1994  
Instructions on back  
Submit to Appropriate District Office  
State Lease - 4 Copies  
Fee Lease - 3 Copies

☐ AMENDED REPORT

WELL LOCATION AND ACREAGE DEDICATION PLAT

1 APT Number 30-045-29496		1 Pool Code 71629		1 Pool Name Basin Fruitland Coal	
1 Property Code 21563		1 Property Name Guinness			1 Well Number 90
1 OGRID No. 006515		1 Operator Name Dugan Production Corporation			1 Elevation 6030' Estimated

10 Surface Location

UL or lot no.	Section	Township	Range	Lot Idn	Feet from the	North/South line	Feet from the	East/West line	County
K	13	26N	13W		1850	South	2510	West	San Juan

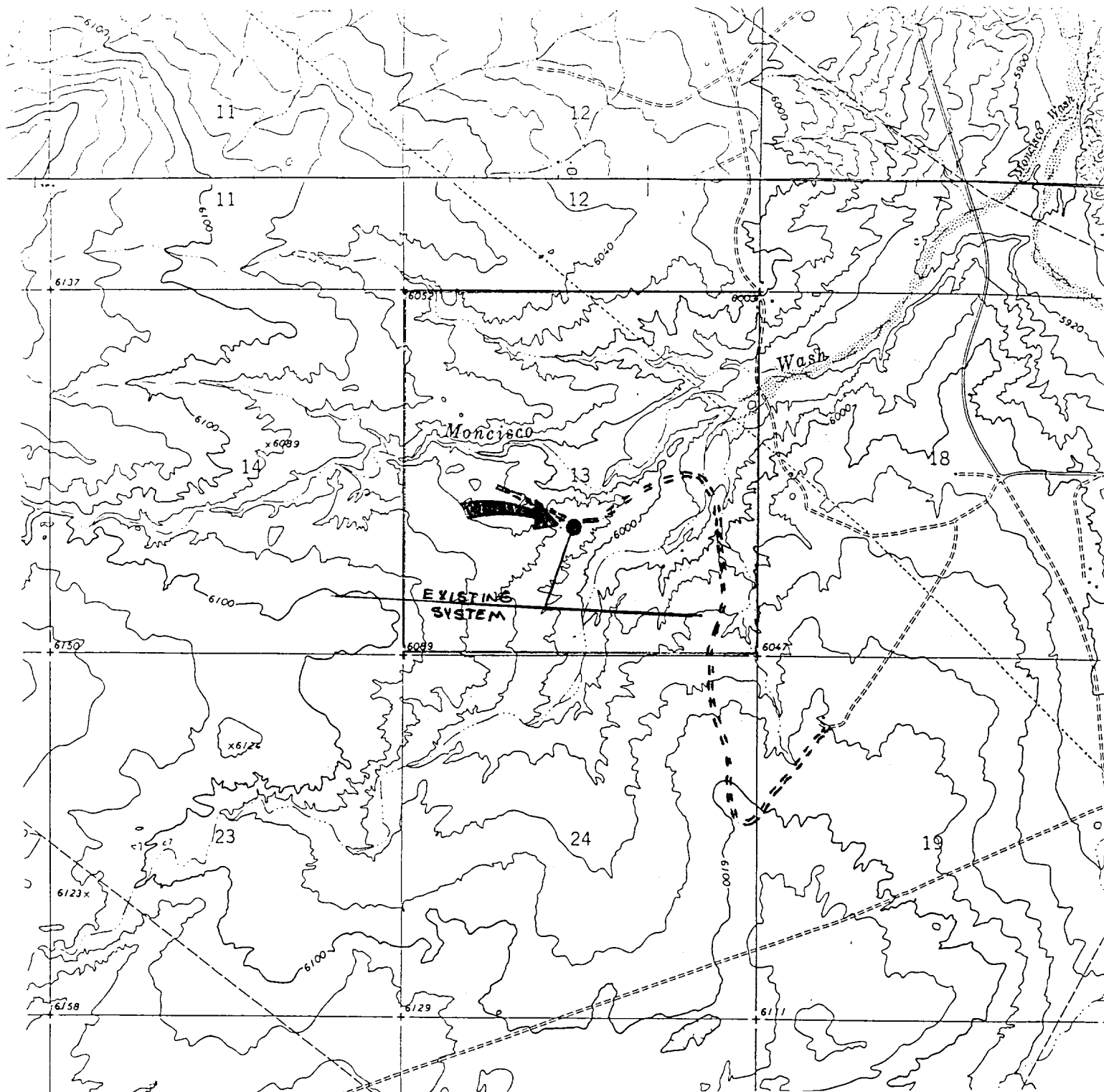
11 Bottom Hole Location If Different From Surface

UL or lot no.	Section	Township	Range	Lot Idn	Feet from the	North/South line	Feet from the	East/West line	County

12 Dedicated Acres 5/320	13 Joint or Infill	14 Consolidation Code Will be	15 Order No. communitized
-----------------------------	--------------------	----------------------------------	------------------------------

NO ALLOWABLE WILL BE ASSIGNED TO THIS COMPLETION UNTIL ALL INTERESTS HAVE BEEN CONSOLIDATED  
OR A NON-STANDARD UNIT HAS BEEN APPROVED BY THE DIVISION

16				17 OPERATOR CERTIFICATION I hereby certify that the information contained herein is true and complete to the best of my knowledge and belief  Signature <u>Sherman E. Dugan</u> Printed Name <u>Sherman E. Dugan</u> Title <u>Vice-President</u> Date <u>June 3, 1997</u>	
<p>Section 13</p>				18 SURVEYOR CERTIFICATION I hereby certify that the information shown on this plat was plotted from the actual surveys made by me or under my supervision, and is true and correct to the best of my knowledge and belief.  Signature <u>Edgar L. Risenbroun</u> Date of Survey <u>February 1997</u> Professional Surveyor Certificate Number <u>5979</u>	



### Existing Roads

### Exhibit E

Vicinity of nearest town or reference pt.  
Approx. 3 mi W of EPNG Chaco Plant

Type of surface dirt

Conditions good

Other \_\_\_\_\_

Reference map: USGS map

Moncisco Wash, NM

Dugan Production Corp.

Guinness #90

### Planned Access Road(s)

### Exhibit E

Width -- Maximum grades --

Drainage design as required

Cuts & Fills as required

Surfacing material none

☒ Turnouts

☒ Culverts

☒ Gates

☒ Cattleguards

☒ Fence cuts

☒ Waterbars

Access Road &

Pipeline

Access road(s) do/do not cross Fed/Ind land.

No new access is required