

UNITED STATES  
DEPARTMENT OF THE INTERIOR  
BUREAU OF LAND MANAGEMENT

## APPLICATION FOR PERMIT TO DRILL OR DEEPEN

## 1a. TYPE OF WORK

DRILL ☒DEEPEN ☐

## b. TYPE OF WELL

OIL  
WELL ☐GAS  
WELL ☒

OTHER

SINGLE  
ZONE ☒MULTIPLE  
ZONE ☐

## 2. NAME OF OPERATOR

DUGAN PRODUCTION CORP. 6515

## 3. ADDRESS AND TELEPHONE NO.

P.O. Box 420, Farmington, NM 87499

4. LOCATION OF WELL (Report location clearly and in accordance with any State requirements.)\*  
At surface790' FNL & 1980' FEL (NW/4 NE/4)  
At proposed prod. zone

## 14. DISTANCE IN MILES AND DIRECTION FROM NEAREST TOWN OR POST OFFICE\*

approx. 5 miles SW of EPNG Chaco Plant

16. DISTANCE FROM PROPOSED\*  
LOCATION TO NEAREST  
PROPERTY OR LEASE LINE, FT.  
(Also to nearest drlg. unit line, if any)

790'

## 18. NO. OF ACRES IN LEASE

1920

17. NO. OF ACRES ASSIGNED  
TO THIS WELL

N/ 320

19. DISTANCE FROM PROPOSED LOCATION\*  
TO NEAREST WELL, DRILLING, COMPLETED,  
OR APPLIED FOR, ON THIS LEASE, FT. from DPC WBU#124

approx. 1300'

## 20. PROPOSED DEPTH

1435'

## 21. ROTARY OR CABLE TOOLS

Rotary

## 22. ELEVATIONS (Show whether DF, ET, GR, etc.)

6270' GL (est)

This action is subject to technical and  
procedural review pursuant to 43 CFR 3165.3  
and appeal pursuant to 43 CFR 3165.4.

## 23. APPROX. DATE WORK WILL START\*

ASAP

## 24. PROPOSED CASING AND CEMENTING PROGRAM

SIZE OF HOLE	GRADE, SIZE OF CASING	WEIGHT PER FOOT	SETTING DEPTH	QUANTITY OF CEMENT
9-7/8"	7"	20#	120'	50 sx (59 cu ft.) circ. to surf.
6-1/4"	4 1/2"	10.5#	1435'	180 sx (371 cu ft.) circ. to surf.

DRILLING OPERATIONS AUTHORIZED ARE  
SUBJECT TO COMPLIANCE WITH ATTACHED  
"GENERAL REQUIREMENTS"

Plan to drill a 9-7/8" hole and set 120' of 7" OD, 20#, J-55 surface casing;  
then plan to drill a 6-1/4" hole to total depth with gel-water-mud program to  
test the Fruitland Coal formation. Plan to run IES and CDL logs. If determined  
productive, will run 4 1/2", 10.5#, J-55 casing, selectively perforate, frac,  
clean out after frac and complete well.

RECEIVED  
JAN 12 1998  
OIL CON. DIV.  
DIST. 3

IN ABOVE SPACE DESCRIBE PROPOSED PROGRAM: If proposal is to deepen, give data on present productive zone and proposed new productive zone. If proposal is to drill or deepen directionally, give pertinent data on subsurface locations and measured and true vertical depths. Give blowout preventer program, if any.

24.

SIGNED

Sherman C. Dugan

TITLE

Vice President

DATE

6/2/97

(This space for Federal or State office use)

PERMIT NO.

APPROVAL DATE

Application approval does not warrant or certify that the applicant holds legal or equitable title to those rights in the subject lease which would entitle the applicant to conduct operations thereon.  
CONDITIONS OF APPROVAL, IF ANY:

/s/ Duane W. Spencer

JAN - 8 1998

APPROVED BY

TITLE

DATE

\*See Instructions On Reverse Side

Title 18 U.S.C. Section 1064, makes it a crime for any person knowingly and willfully to make to any department or agency of the United States any false, fictitious or fraudulent statements or representations as to any matter within its jurisdiction.

District I  
PO Box 1980, Hobbs, NM 88241-1980  
District II  
PO Drawer DD, Artesia, NM 88211-0719  
District III  
1000 Rio Brazos Rd., Aztec, NM 87410  
District IV  
PO Box 2088, Santa Fe, NM 87504-2088

State of New Mexico  
Energy, Minerals & Natural Resources Department

OIL CONSERVATION DIVISION  
PO Box 2088  
Santa Fe, NM 87504-2088

Form C-102  
Revised February 21, 1994  
Instructions on back  
Submit to Appropriate District Office  
State Lease - 4 Copies  
Fee Lease - 3 Copies

☐ AMENDED REPORT

WELL LOCATION AND ACREAGE DEDICATION PLAT

1 APT Number 30-045-29512		2 Pool Code 71629		3 Pool Name Basin Fruitland Coal		
4 Property Code 13898		5 Property Name Patriot			6 Well Number 92	
7 OGRID No. 006515		8 Operator Name Dugan Production Corporation			9 Elevation 6270' Estimated	

10 Surface Location

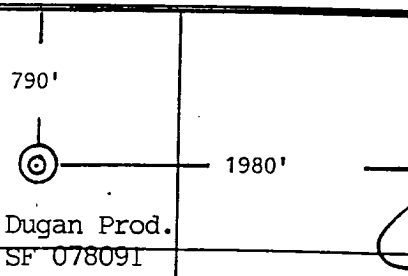
UL or lot no.	Section	Township	Range	Lot Idn	Feet from the	North/South line	Feet from the	East/West line	County
B	28	26N	13W		790	North	1980	East	San Juan

11 Bottom Hole Location If Different From Surface

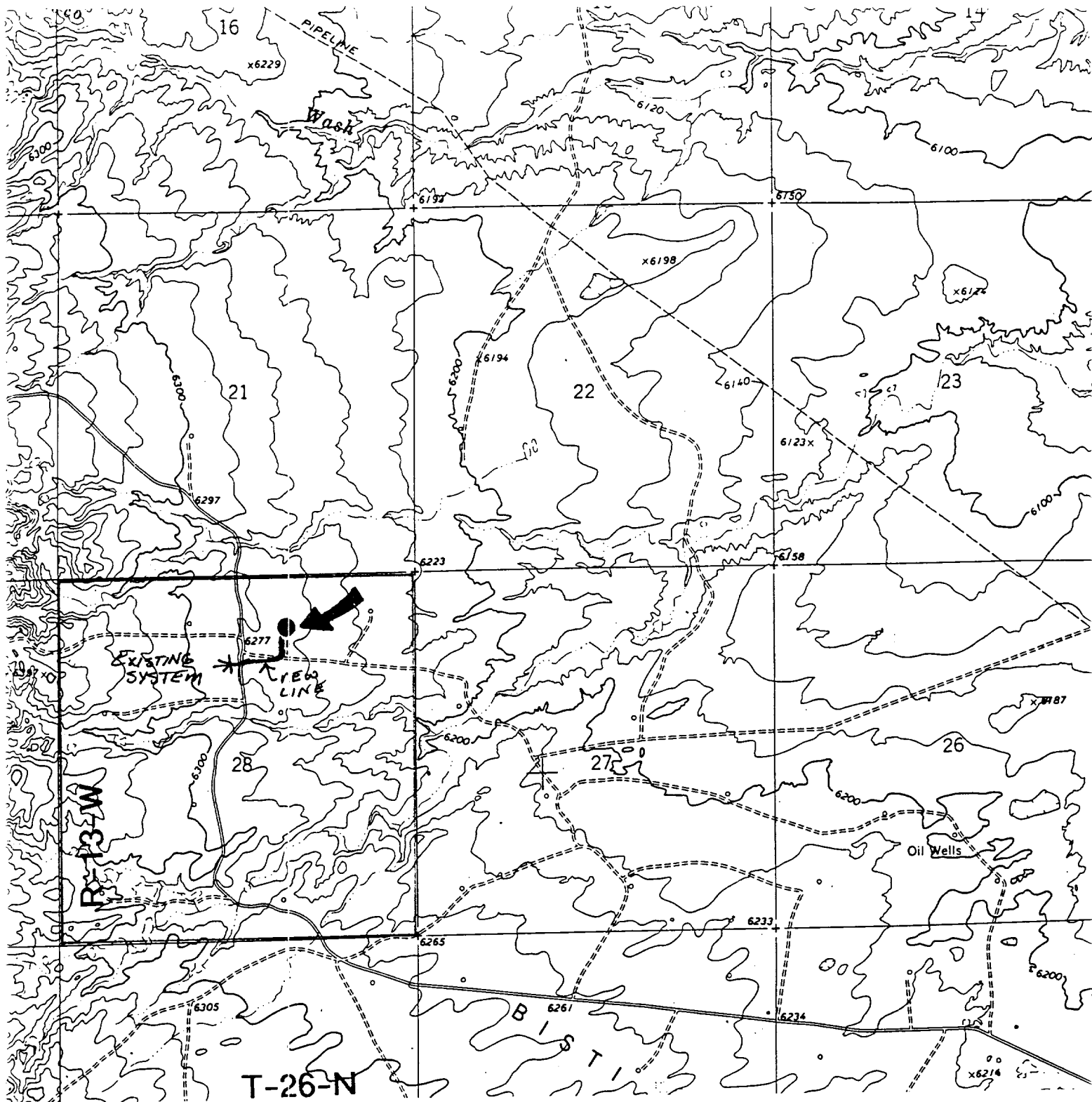
UL or lot no.	Section	Township	Range	Lot Idn	Feet from the	North/South line	Feet from the	East/West line	County

12 Dedicated Acres N/320	13 Joint or Infill	14 Consolidation Code	15 Order No.
-----------------------------	--------------------	-----------------------	--------------

NO ALLOWABLE WILL BE ASSIGNED TO THIS COMPLETION UNTIL ALL INTERESTS HAVE BEEN CONSOLIDATED  
OR A NON-STANDARD UNIT HAS BEEN APPROVED BY THE DIVISION

16		17 OPERATOR CERTIFICATION I hereby certify that the information contained herein is true and complete to the best of my knowledge and belief  Signature <u>Sherman E. Dugan</u> Printed Name Vice-President Title 6/2/97 Date	
		18 SURVEYOR CERTIFICATION I hereby certify that the well location shown on this plat was plotted from field notes of actual surveys made by me or under my supervision, and that the same is true and correct to the best of my belief.  July 5, 1995 Date of Survey Signature and Seal of Professional Surveyor: <u>Edgar L. Risenhoover</u> Certificate Number <u>5979</u>	

RECEIVED  
JAN 12 1998  
OIL CON. DIV.  
DIST. 3



Existing Roads

Exhibit E

Vicinity of nearest town or reference pt.  
approx. 5 miles SW of EPNG Chaco Plant

Type of surface dirt

Conditions good

Other \_\_\_\_\_

Reference map: USGS map - Moncisco Wash, NM

Planned Access Road(s)

Exhibit E

Width 14' Maximum grades 2%

Drainage design as required

Cuts & Fills as required

Surfacing material none

☒ Turnouts

☒ Waterbars

☒ Culverts

☒ Gates

☒ Cattleguards

☒ Fence cuts

Access Road &  
Pipeline

Access road(s) ☒ do/do not cross Fed/Ind land.

DUGAN PRODUCTION CORP. - Patriot #92