

District I
1625 N. French Dr., Hobbs, NM 88240
District II
811 South First, Artesia, NM 88210
District III
1000 Rio Brazos Road, Aztec, NM 87410
District IV
2040 South Pacheco, Santa Fe, NM 87505

State of New Mexico
Energy Minerals and Natural Resources

Oil Conservation Division
2040 South Pacheco
Santa Fe, NM 87505

Form C-101
Revised March 17, 1999

Submit to appropriate District Office
State Lease - 6 Copies
Fee Lease - 5 Copies

☐ AMENDED REPORT

APPLICATION FOR PERMIT TO DRILL, RE-ENTER, DEEPEN, PLUGBACK, OR ADD A ZONE

¹ Operator Name and Address Robert L. Bayless, Producer LLC P.O. Box 168 Farmington, NM 87499		² OGRID Number 150182
³ Property Code 25033	⁵ Property Name Krause	⁴ API Number 30-045-30024
		⁶ Well No. 1

⁷ Surface Location									
UL or lot no.	Section	Township	Range	Lot Idn	Feet from the	North South line	Feet from the	East/West line	County
3	2	26N	11W		1190	North	1450	West	San Juan

⁸ Proposed Bottom Hole Location If Different From Surface									
UL or lot no.	Section	Township	Range	Lot Idn	Feet from the	North South line	Feet from the	East/West line	County
⁹ Proposed Pool 1 Basin Fruitland Coal					¹⁰ Proposed Pool 2				

¹¹ Work Type Code N	¹² Well Type Code G	¹³ Cable/Rotary R	¹⁴ Lease Type Code S	¹⁵ Ground Level Elevation 6376
¹⁶ Multiple No	¹⁷ Proposed Depth 2060	¹⁸ Formation Pictured Cliffs	¹⁹ Contractor L & B Speedrill	²⁰ Spud Date ASAP

²¹ Proposed Casing and Cement Program					
Hole Size	Casing Size	Casing weight/foot	Setting Depth	Sacks of Cement	Estimated TOC
8 3/4	7	23.0	120	30	Surface
6 1/4	4 1/2	10.5	2060	180	Surface

²² Describe the proposed program. If this application is to DEEPEN or PLUG BACK, give the data on the present productive zone and proposed new productive zone.

Describe the blowout prevention program, if any. Use additional sheets if necessary.

Drill 8 3/4" hole to 120 ft. and set 120 ft. 7" 23.0#/ft. casing, cemented with 30 sx class B cement circulated to surface. Drill 6 1/4" hole to 2060 ft. using clear water natural mud and water loss additives. Run induction and density logs. Set 2060 ft. 4 1/2" 10.5#/ft. J-55 casing, cemented with 180 sx cement, circulated to surface. No abnormal temperature or pressure is anticipated.

Tops: Ojo Alamo @ 810, Fruitland @ 1520, Pictured Cliffs @ 1880

²³ I hereby certify that the information given above is true and complete to the best of my knowledge and belief.

Signature:

Price M. Bayless

Printed name: Price M. Bayless

Title: Engineer

Date:

10/26/99

Phone:

(505) 326-2659

OIL CONSERVATION DIVISION

Approved by:

Price M. Bayless 11-2-99

Title:

DEPUTY OIL & GAS INSPECTOR, DIST. #3

Approval Date:

NOV 2 1999

Expiration Date:

NOV 2 2000

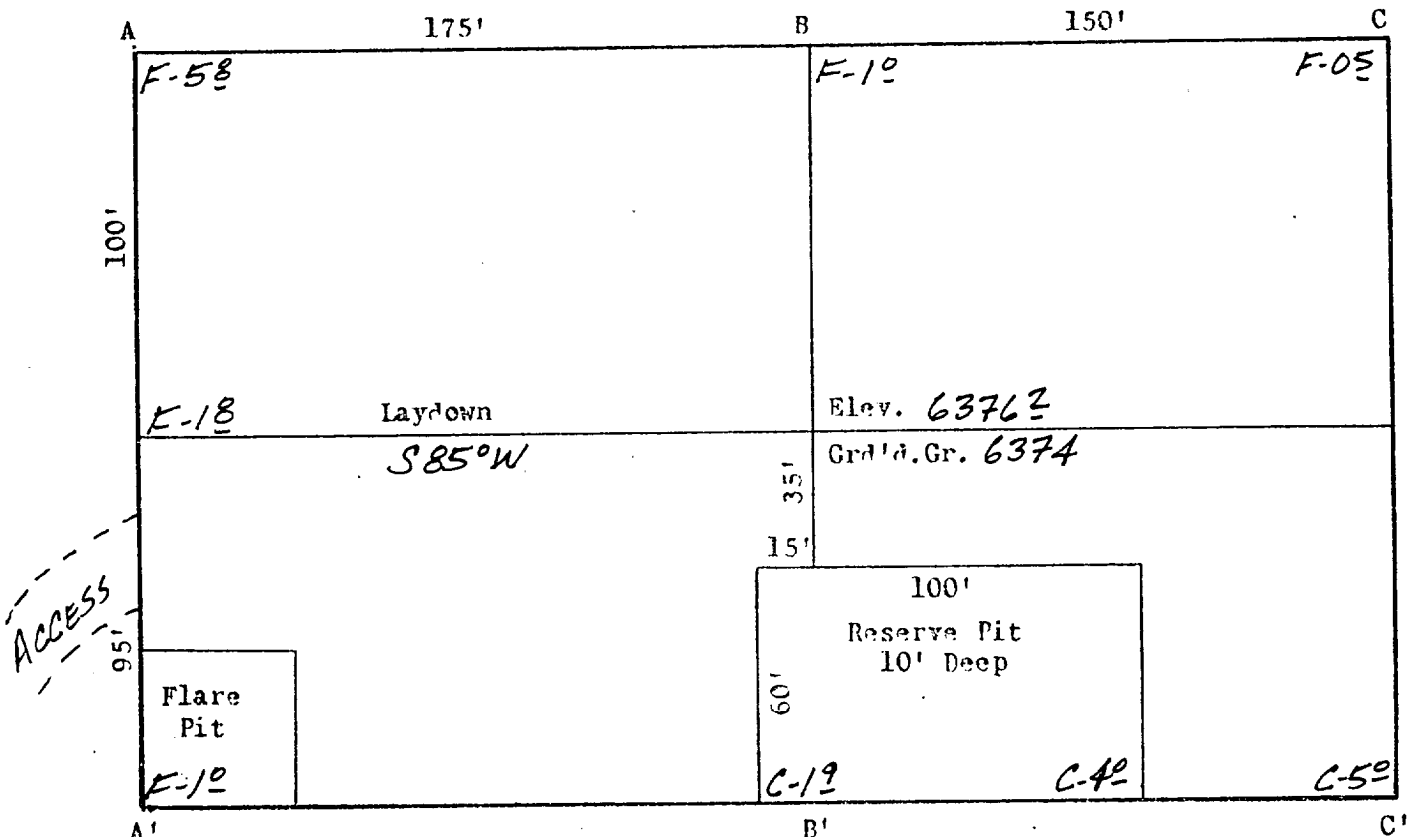
Conditions of Approval:

Attached ☐

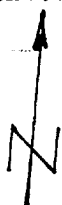
HOLD FOR NSL

New Mexico Oil Conservation Division

ROBERT L. BAYLESS, PRODUCER LLC
 KRAUSE #1
 1190' FNL & 1450' FWL
 Sec. 2, T26N, R11W, NMPM
 San Juan Co., NM



Scale: 1"=50'



A-A' Vert.: 1"=30' Horiz.: 1"=100' C/L

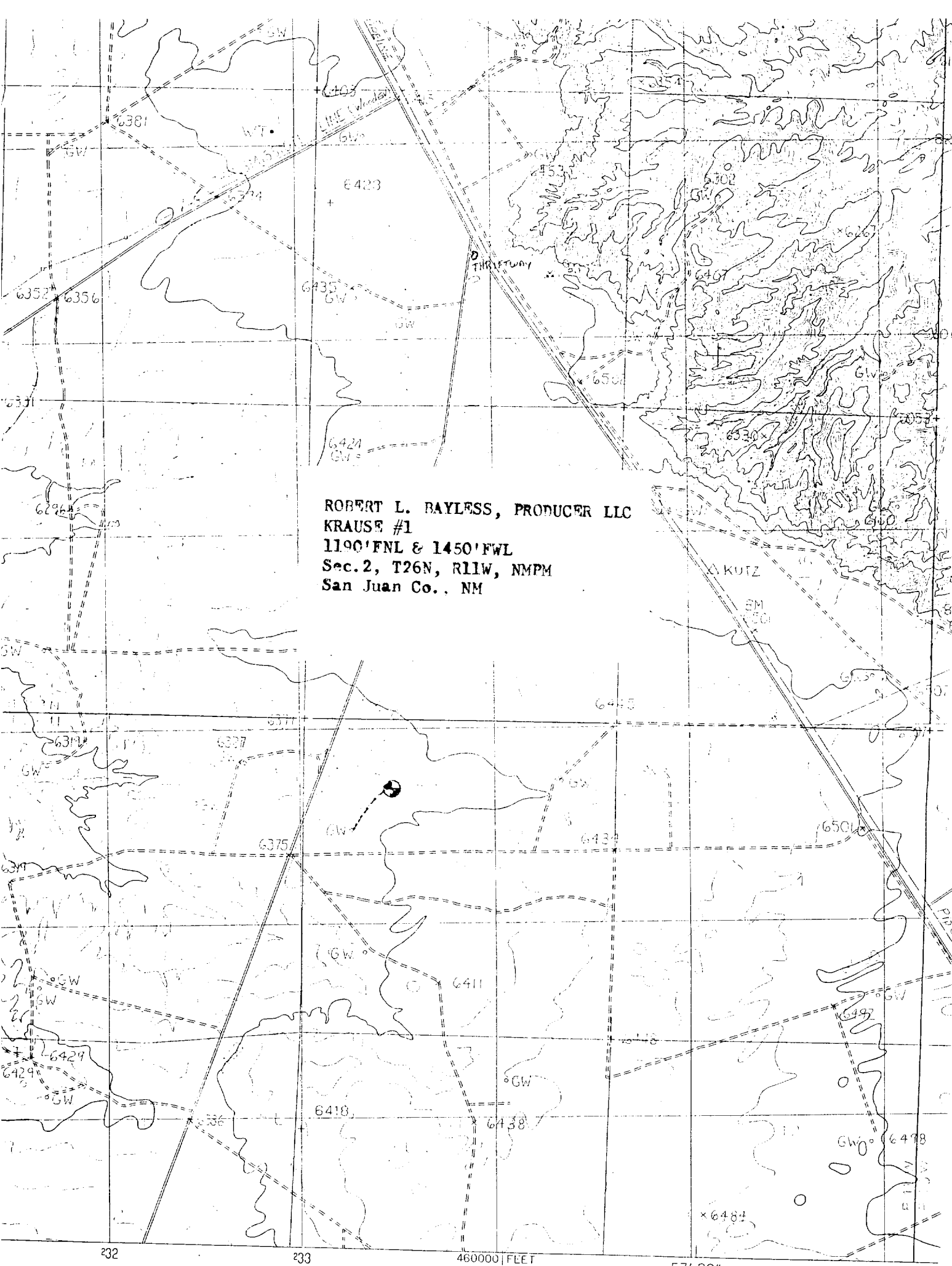
6380						
6370						

B-B'

6380						
6370						

C-C'

6380						
6370						



ROBERT L. BAYLESS, PRODUCER LLC
KRAUSE #1
1190' FNL & 1450' FWL
Sec. 2, T26N, R11W, NMPM
San Juan Co., NM