

UNITED STATES
DEPARTMENT OF THE INTERIOR
BUREAU OF LAND MANAGEMENT

Sundry Notices and Reports on Wells

1. Type of Well

GAS

2. Name of Operator

**BURLINGTON
RESOURCES**

OIL & GAS COMPANY

3. Address & Phone No. of Operator

PO Box 4289, Farmington, NM 87499 (505) 326-9700

4. Location of Well, Footage, Sec., T, R, M

1360' FSL, 2265' FEL, Sec.1, T-26-N, R-9-W, NMPM

5. Lease Number

SF-078135

6. If Indian, All. or Tribe Name

7. Unit Agreement Name

Huerfanito Unit

8. Well Name & Number

Huerfanito Unit #87M

9. API Well No.

30-045-30309

10. Field and Pool

Blanco MV/Basin DK

11. County and State

San Juan Co, NM

12. CHECK APPROPRIATE BOX TO INDICATE NATURE OF NOTICE, REPORT, OTHER DATA

Type of Submission

☒ Notice of Intent

☐ Subsequent Report

☐ Final Abandonment

Type of Action

☐ Abandonment ☒ Change of Plans

☐ Recompletion ☐ New Construction

☐ Plugging Back ☐ Non-Routine Fracturing

☐ Casing Repair ☐ Water Shut off

☒ Altering Casing ☐ Conversion to Injection

☐ Other -

13. Describe Proposed or Completed Operations

The well number of the subject well has been changed from #90A to #87M due to adding the Dakota formation. Attached is the revised C-102 plat. It is intended to alter the approved casing depths and cement of the subject well.

Revisions:

Mud Program:

Interval	Type	Weight	Fluid Loss
0-120'	Spud	8.4-9.0	No control
120-2117'	LSND	8.4-9.0	No control
2117-6700'	Air/Mist	n/a	n/a

Casing Program:

Hole Size	Depth Interval	Casing Size	Weight	Grade
12 1/4"	0-120'	9 5/8"	32.3#	H-40
8 3/4"	0-2117'	7"	20.0#	J-55
6 1/4"	0-6700'	4 1/2"	10.5#	J-55

Cementing Program:

9 5/8" surface casing - 96 sx Class "B" cement with 0.25 pps Flocele and 3% calcium chloride (113 cu.ft. of slurry, 200% excess to circulate to surface).

7" intermediate casing - lead w/202 sx 50/50 Class "G"/Trinity Light with 2.5% sodium metasilicate, 2% calcium chloride, 10 pps Gilsonite, 0.5 pps Flocele. Tail with 90 sx Class "G" 50/50 poz w/2% gel, 2% calcium chloride, 5 pps Gilsonite, 0.1% antifoam and 0.25 pps Flocele (637 cu.ft. of slurry, 150% excess to circulate to surface).

7" intermediate casing alternative two stage: Stage collar at 1567'. First stage: cement w/129 sx 50/50 Class "G" poz w/2% gel, 2% calcium chloride, 5 pps Gilsonite, 0.1% antifoam and 0.25 pps Flocele. Second stage: w/183 sx 50/50 Class "G"/Trinity Light with 2.5% sodium metasilicate, 2% calcium chloride, 10 pps Gilsonite, 0.5 pps Flocele (637 cu.ft. of slurry, 150% excess to circulate to surface).

4 1/2" production liner - cement with 467 sx Class "G" 50/50 poz w/4.5% gel, 0.25 pps Flocele, 5 pps Gilsonite, 0.25% fluid loss, 0.1% retardant (673 cu.ft., 40% excess to circulate liner).

14. I hereby certify that the foregoing is true and correct.

Signed Jeffrey C. Cale Title Regulatory Supervisor Date 1/2/01

TLW

(This space for Federal or State Office use)

APPROVED BY Jim Lovato Title _____ Date FEB - 1 2001

CONDITION OF APPROVAL, if any:

Title 18 U.S.C. Section 1001, makes it a crime for any person knowingly and willfully to make to any department or agency of the United States any false, fictitious or fraudulent statements or representations as to any matter within its jurisdiction.

NMCCD

District I
PO Box 1980, Hobbs, NM 88241-1980

District II
PO Drawer DD, Artesia, NM 88211-0719

District III
1000 Rio Brazos Rd., Aztec, NM 87410

District IV
PO Box 2088, Santa Fe, NM 87504-2088

State of New Mexico
Energy, Minerals & Natural Resources Department

OIL CONSERVATION DIVISION
PO Box 2088
Santa Fe, NM 87504-2088

Form C-102
Revised February 21, 1994
Instructions on back
Submit to Appropriate District Office
State Lease - 4 Copies
Fee Lease - 3 Copies

☐ AMENDED REPORT

WELL LOCATION AND ACREAGE DEDICATION PLAT

¹ API Number 30-045	² Pool Code 72319/71599	³ Pool Name Blanco Mesaverde/Basin Dakota
⁴ Property Code 7138	⁵ Property Name HUERFANITO UNIT	⁶ Well Number 87M
⁷ OGRID No. 14538	⁸ Operator Name BURLINGTON RESOURCES OIL & GAS COMPANY	⁹ Elevation 6163'

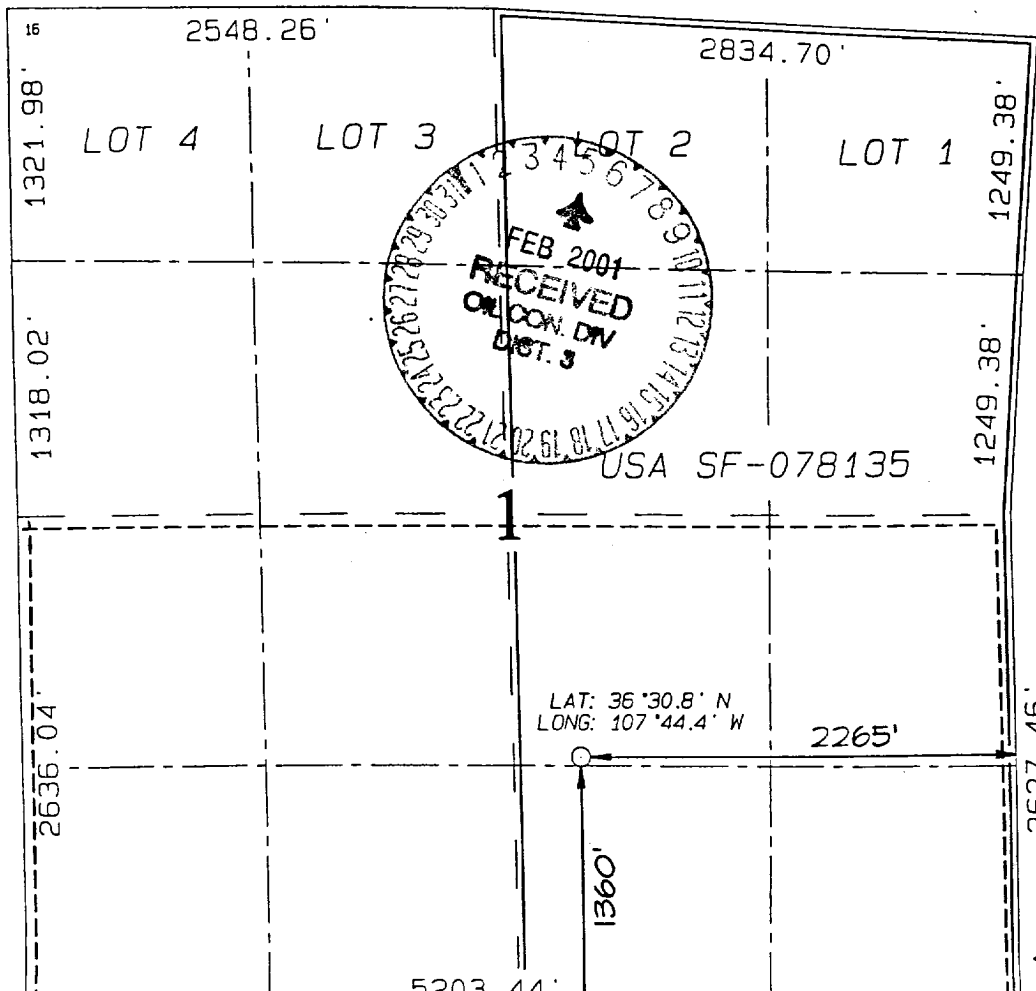
¹⁰ Surface Location

UL or lot no.	Section	Township	Range	Lot Idn	Feet from the	North/South line	Feet from the	East/West line	County
J	1	26N	9W		1360	SOUTH	2265	EAST	SAN JUAN

¹¹ Bottom Hole Location If Different From Surface

UL or lot no.	Section	Township	Range	Lot Idn	Feet from the	North/South line	Feet from the	East/West line	County
¹² Dedicated Acres S/320 - DK E/320.06 - MV		¹³ Joint or Infill		¹⁴ Consolidation Code		¹⁵ Order No.			

NO ALLOWABLE WILL BE ASSIGNED TO THIS COMPLETION UNTIL ALL INTERESTS HAVE BEEN CONSOLIDATED
OR A NON-STANDARD UNIT HAS BEEN APPROVED BY THE DIVISION



¹⁷ OPERATOR CERTIFICATION

I hereby certify that the information contained herein is true and complete to the best of my knowledge and belief

Peggy Cole
Signature
Peggy Cole
Printed Name
Regulatory Supervisor
Title
1-3-01
Date

¹⁸ SURVEYOR CERTIFICATION

I hereby certify that the well location shown on this plat was plotted from field notes of actual surveys made by me or under my supervision, and that the same is true and correct to the best of my belief.

MARCH 29, 2000
Date of Survey
Signature and Seal of Professional Surveyor
Neale C. Edwards
NEALE C. EDWARDS
NEW MEXICO
6857
REGISTERED PROFESSIONAL SURVEYOR