

UNITED STATES
DEPARTMENT OF THE INTERIOR
BUREAU OF LAND MANAGEMENT

APPLICATION FOR PERMIT TO DRILL OR DEEPEN

1a. TYPE OF WORK

DRILL ☒DEEPEN ☐

b. TYPE OF WELL

OIL
WELL ☐GAS
WELL ☒OTHER ☐SINGLE
ZONE ☒MULTIPLE
ZONE ☐

2. NAME OF OPERATOR

Cross Timbers Operating Company (505) 324-1090

3. ADDRESS AND TELEPHONE NO.

2700 Farmington Av, Bldg K, Ste 1, Farmington, NM 87401

4. LOCATION OF WELL (Report location clearly and in accordance with any State requirements.)

At surface

950' FNL & 850' FEL

At proposed prod. zone

Same

14. DISTANCE IN MILES AND DIRECTION FROM NEAREST TOWN OR POST OFFICE*

17 air miles S of Bloomfield

15. DISTANCE FROM PROPOSED*

LOCATION TO NEAREST

PROPERTY OR LEASE LINE, FT.

(Also to nearest drlg. unit line, if any)

950'

16. NO. OF ACRES IN LEASE

1,600

18. DISTANCE FROM PROPOSED LOCATION*

TO NEAREST WELL DRILLING COMPLETED,

OR APPLIED FOR, ON THIS LEASE, FT.

2634'

19. PROPOSED DEPTH

6,700'

17. NO. OF ACRES ASSIGNED
TO THIS WELL

320

20. ROTARY OR CABLE TOOLS

Rotary

21. ELEVATIONS (Show whether DF, RT, GR, etc.)

6,339' ungraded

22. APPROX. DATE WORK WILL START*

June 1, 2001

5. LEASE DESIGNATION AND SERIAL NO.

NMSF-078641

6. IF INDIAN, ALLOTTEE OR TRIBE NAME

N/A

7. UNIT AGREEMENT NAME

N/A

8. FARM OR LEASE NAME WELL NO.

Berger 4 E

9. API WELL NO.

30-045-30518

10. FIELD AND POOL OR WILDCAT

Basin Dakota

11. SEC., T., R., M., OR BLK.
AND SURVEY OR AREA

22-26n-11w NMPM

12. COUNTY OR PARISH

San Juan

13. STATE

NM

PROPOSED CASING AND CEMENTING PROGRAM

SIZE OF HOLE	GRADE SIZE OF CASING	WEIGHT PER FOOT	SETTING DEPTH	QUANTITY OF CEMENT
12-1/4"	J-55 8-5/8"	24	320' to 300'	≈248 cu. ft. & to surface
7-7/8"	J-55 4-1/2"	10.5	6,700'	≈1,990 cu. ft. & to surface

This action is subject to technical and
procedural review pursuant to 43 CFR 3165.3
and appeal pursuant to 43 CFR 3165.4.

DRILLING OPERATIONS AUTHORIZED ARE
SUBJECT TO COMPLIANCE WITH ATTACHED
"GENERAL REQUIREMENTS"



cc: BIA, BLM, OCD (via BLM), Patton, Tribe

IN ABOVE SPACE DESCRIBE PROPOSED PROGRAM. If proposal is to deepen, give data on present productive zone and proposed new productive zone. If proposal is to drill or deepen directionally, give pertinent data on subsurface locations and measured and true vertical depths. Give blowout preventer program, if any.

Consultant (505) 466-8120

12-14-00

SIGNED

TITLE

DATE

(This space for Federal or State office use)

PERMIT NO.

APPROVAL DATE

10/18/01

Application approval does not warrant or certify that the applicant holds legal or equitable title to those rights in the subject lease which would entitle the applicant to conduct operations thereon
CONDITIONS OF APPROVAL IF ANY:

APPROVED BY

TITLE

DATE

*See Instructions On Reverse Side

District I
PO Box 1980, Hobbs, NM 88241-1980

District II
PO Drawer 00, Artesia, NM 88211-0719

District III
1000 Rio Brazos Rd., Aztec, NM 87410

District IV
PO Box 2088, Santa Fe, NM 87504-2088

State of New Mexico
Energy, Minerals & Natural Resources Department

OIL CONSERVATION DIVISION
PO Box 2088
Santa Fe, NM 87504-2088

Form C-102
Revised February 21, 1994
Instructions on back
Submit to Appropriate District Office
State Lease - 4 Copies
Fee Lease - 3 Copies

☐ AMENDED REPORT

WELL LOCATION AND ACREAGE DEDICATION PLAT

REC'D / SAN JUAN

*API Number 38-045-30518		*Pool Code 71599	*Pool Name BASIN DAKOTA	NOV 15 2000
*Property Code 22661	*Property Name BERGER			*Well Number 4E
*GRID No. 167067	*Operator Name CROSS TIMBERS OPERATING COMPANY			*Elevation 6339'

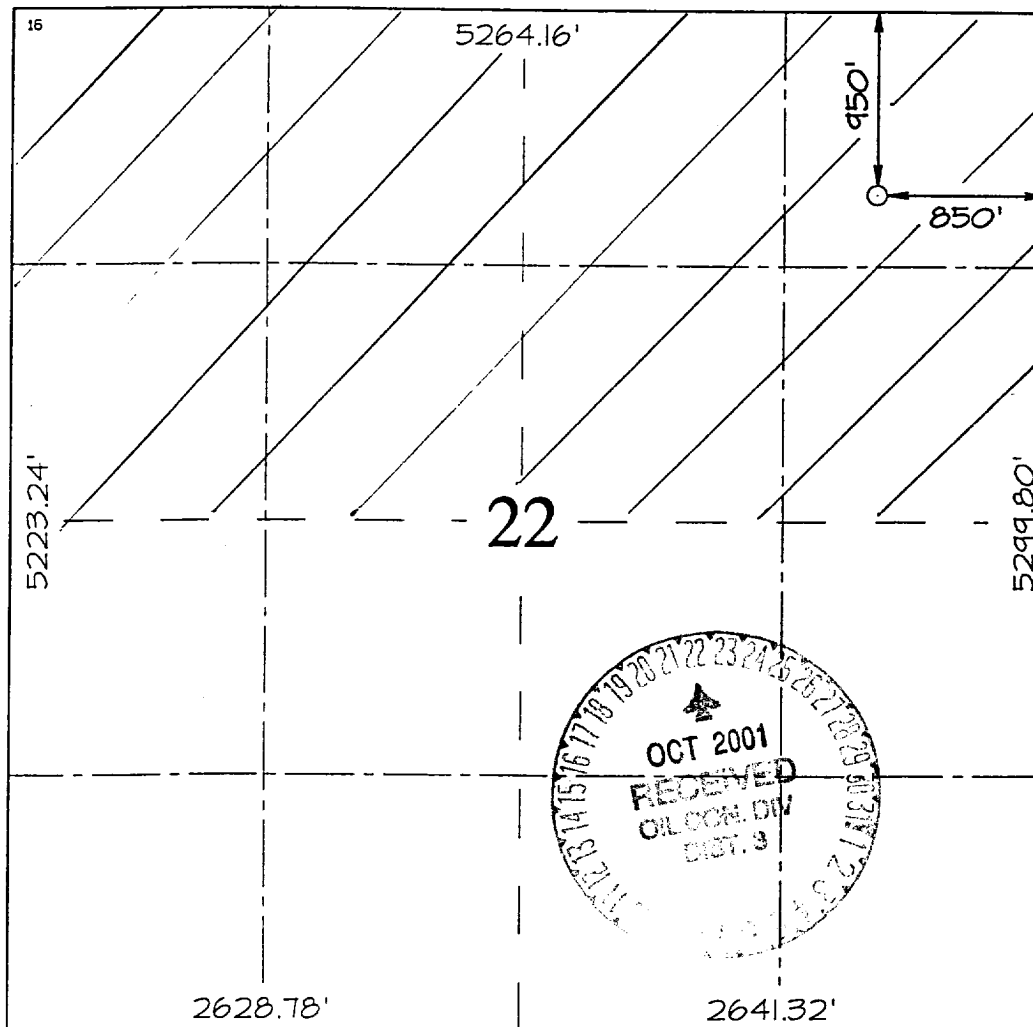
¹⁰ Surface Location

UL or lot no.	Section	Township	Range	Lot Idn	Feet from the	North/South line	Feet from the	East/West line	County
A	22	26N	11W		950	NORTH	850	EAST	SAN JUAN

¹¹ Bottom Hole Location If Different From Surface

UL or lot no.	Section	Township	Range	Lot Idn	Feet from the	North/South line	Feet from the	East/West line	County
¹² Dedicated Acres 320 1/2		¹³ Joint or Infill I		¹⁴ Consolidation Code		¹⁵ Order No.			

NO ALLOWABLE WILL BE ASSIGNED TO THIS COMPLETION UNTIL ALL INTERESTS HAVE BEEN CONSOLIDATED OR A NON-STANDARD UNIT HAS BEEN APPROVED BY THE DIVISION



¹⁷ OPERATOR CERTIFICATION

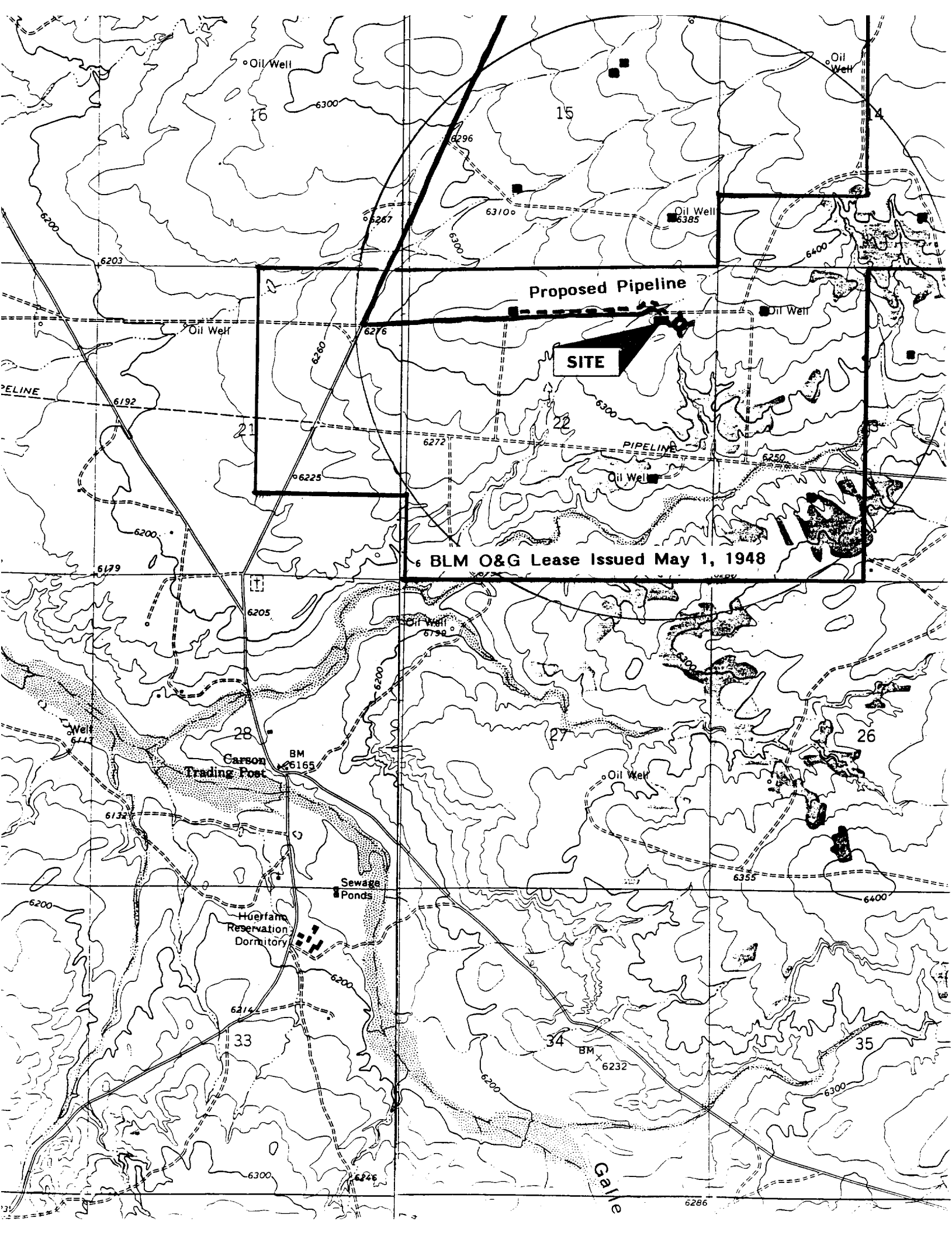
I hereby certify that the information contained herein is true and complete to the best of my knowledge and belief

Signature *Jeff Patton*
Printed Name **Jeff Patton**
Title **Production Engineer**
Date **11/16/00**

¹⁸ SURVEYOR CERTIFICATION

I hereby certify that the well location shown on this plat was plotted from field notes of actual surveys made by me or under my supervision, and that the same is true and correct to the best of my belief.

OCTOBER 24, 2000
Date of Survey
Signature and Seal of Professional Surveyor
NEALE C. EDWARDS
NEW MEXICO
6857
Certificate No. **6857**



BOP SCHEMATIC FOR DRILLING OPERATIONS CLASS 1 (2M) NORMAL PRESSURE

TESTING PROCEDURE

1. Test BOP after installation:

Pressure test BOP to 200-300
psig (low pressure) for 5 min.

Test BOP to Working Press or
to 70% internal yield of surf csg
(10 min).

**2. Test operation of (both) rams
on every trip.**

**3. Check and record Accumulator
pressure on every tour.**

**4. Re-pressure test BOP stack after
changing out rams.**

5. Have kelly cock valve with handle available.

**6. Have safety valve and subs to fit all sizes of
drill string.**

**ROTATING HEAD
(OPTIONAL)**

FILL UP LINE

**FLOW LINE
TO PIT**

**BLIND
RAMS**

**PIPE
RAMS**

**KILL LINE
2" dia min.**

**TO CHOKE
MANIFOLD
2" dia min.**

See Choke Manifold drawing for
specifications

HCR VALVE (OPTIONAL)

**2" (MIN) FULL OPENING
VALVE**

MUD CROSS

**** Remove check or ball
from check valve and
press test to same press
as BOP's. ****

