

UNITED STATES  
DEPARTMENT OF THE INTERIOR  
BUREAU OF LAND MANAGEMENT

APPLICATION FOR PERMIT TO DRILL, DEEPEN, OR PLUG BACK

1a. Type of Work DRILL	5. Lease Number NM-31059 Unit Reporting Number
1B. TYPE OF WELL GAS	6. If Indian, All. or Tribe
2. Operator 149052 ELM RIDGE RESOURCES, INC. 505-632-3476	7. Unit Agreement Name 28631
3. Address & Phone No. of Operator PO Box 189 Farmington, NM 87499	8. Farm or Lease Name RYLEYBART FEDERAL
4. Location of Well 1305' FNL, 1040' FEL	9. Well Number #1
10. Field, Pool Wildcat BASIN FRUITLAND COAL	11. Sec., Twn, Rge, Mer. (NMPM) A NE NE SEC. 24, T27N, R13W API # 30045-30538 T26N
14. Distance in Miles from Nearest Town 13 MILES SOUTH OF FARMINGTON	12. County 13. State SAN JUAN, N.M.
15. Distance from Proposed Location to Nearest Property or Lease Line 1040'	17. Acres Assigned to Well 320 1/2
16. Acres in Lease 960	18. Distance from Proposed Location to Nearest Well, Drig, Compl or Applied for on this Lease 2500'
19. Proposed Depth 1260' 1340' ft	20. Rotary or Cable Tools ROTARY
21. Elevations (DF, FT, GR, Etc.) 6089' GL	22. Approx. Date Work will Start JUNE
23. Proposed Casing and Cementing Program SEE OPERATIONS PLAN ATTACHED	DRILLING PROGRAM SUBJECT TO THE BUREAU OF LAND MANAGEMENT
24. Authorized by: PATRICK HEGARTY, Agent	61-18-01 Date

PERMIT NO. \_\_\_\_\_ APPROVAL DATE \_\_\_\_\_

APPROVED BY /s/ Joel Farrell TITLE \_\_\_\_\_ DATE AUG - 6

Archaeological Report to be submitted

Threatened and Endangered Species Report to be submitted

NOTE: This format is issued in lieu of U.S. BLM Form 3160--3

Title 1 U.S.C. Section 1001, makes it a crime for any person knowingly and willfully to make to any department or agency of the United States any false, fictitious or fraudulent statements or presentations as to any matter within its jurisdiction.

District I  
1811 Bag 1980, Hobbs, NM 88241-1980  
District II  
811 South First, Artesia, NM 88210  
District III  
1000 Rio Brazos Rd., Aztec, NM 87410  
District IV  
2040 South Pacheco, Santa Fe, NM 87505

State of New Mexico  
Energy, Minerals & Natural Resources Department

OIL CONSERVATION DIVISION  
2040 South Pacheco  
Santa Fe, NM 87505

Form C-102  
Revised October 18, 1994  
Instructions on back  
Submit to Appropriate District Office  
State Lease - 4 Copies  
Fee Lease - 3 Copies

☐ AMENDED REPORT

WELL LOCATION AND ACREAGE DEDICATION PLAT

1 API Number <b>30-045-30538</b>		1 Pool Code <b>71629</b>		1 Pool Name <b>BASIN FRUITLAND COAL</b>	
1 Property Code <b>28631</b>		1 Property Name <b>RYLEYBART FEDERAL</b>			
1 OGRID No. <b>149052</b>		1 Operator Name <b>DELHI-TRADING INCORPORATED</b>			
				1 Well Number <b>1</b>	
				1 Elevation <b>6089'</b>	

10 Surface Location

UL or lot no.	Section	Township	Range	Lot Idn	Feet from the	North/South line	Feet from the	East/West line	County
A	24	26N	13W		1305'	NORTH	1040'	EAST	SAN JUAN

11 Bottom Hole Location If Different From Surface

UL or lot no.	Section	Township	Range	Lot Idn	Feet from the	North/South line	Feet from the	East/West line	County

12 Dedicated Acres	13 Joint or Infill	14 Consolidation Code	15 Order No.
320			

NO ALLOWABLE WILL BE ASSIGNED TO THIS COMPLETION UNTIL ALL INTERESTS HAVE BEEN CONSOLIDATED OR A NON-STANDARD UNIT HAS BEEN APPROVED BY THE DIVISION

	<p>17 OPERATOR CERTIFICATION</p> <p>I hereby certify that the information contained herein is true and complete to the best of my knowledge and belief</p> <p>Signature: <i>Patrick Hebert</i></p> <p>Printed Name: <b>PATRICK HEBERT</b></p> <p>Title: <b>PRESIDENT</b></p> <p>Date: <b>10-24-00</b></p>
	<p>18 SURVEYOR CERTIFICATION</p> <p>I hereby certify that the well location shown on this plat was plotted from field notes of actual surveys made by me or under my supervision, and that the same is true and correct to the best of my belief.</p> <p>Date of Survey: <b>10/05/00</b></p> <p>Signature and Seal of Professional Surveyor: <i>Henry P. Broadhurst Jr.</i></p> <p>Certificate Number: <b>17393</b></p>

753

10' 754 R.13 W. R.12 W.

755

756

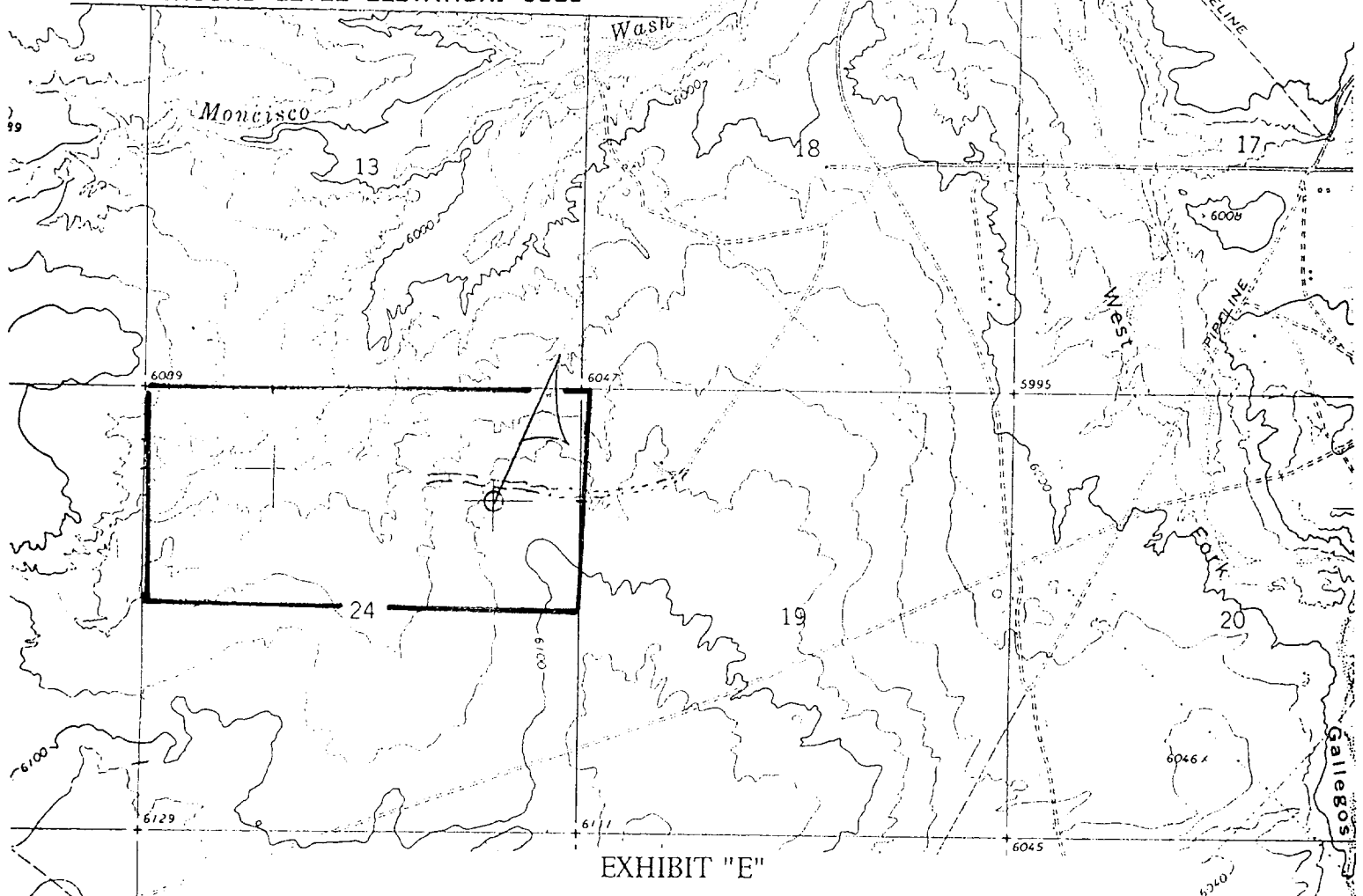
410 000 FEET

757

# DELHI — TRADING, INC. RYLEYBART FEDERAL #1

1305' FNL, 1040' FEL

NE/4 SEC.24, T-26-N, R-13-W, N.M.P.M.,  
SAN JUAN COUNTY, NEW MEXICO  
GROUND LEVEL ELEVATION: 6089



## Existing Roads

Vicinity of nearest town or reference pt.

Approx. 6.5 mi NW of Chaco Plant

Type of surface dirtConditions good

Other \_\_\_\_\_

Reference map: USGS map

## Planned Access Road(s)

Width --- Maximum grades ---Drainage design as requiredCuts & Fills as requiredSurfacing material none

Turnouts

Culverts

Gates

Cattleguards

Fence cuts

Waterbars

Access Road &amp;

Pipeline

Access road(s) do/do not cross Fed. Ind land.

**EXHIBIT "B"**  
**OPERATIONS PLAN**  
**Ryleybart Federal #1**

**APPROXIMATE FORMATION TOPS:**

Ojo Alamo	Surface
Kirtland	<100'
Farmington	315'
Fruitland	800'
Fruitland Coal	1160'

Total Depth	1260'
	<b>1340 ft</b>

**LOGGING PROGRAM:** Run IES & CDL logs.

Catch samples every 30 feet from 915' to total depth.

**CASING PROGRAM:**

Hole Size	Casing Size	Wt./Ft.	Setting Depth	Grade and Condition
9-7/8"	7"	20#	±120'	J-55
6-1/4"	4-1/2"	10.5#	<u>1340'</u>	J-55

The hole size is not smaller than 1-1/2" larger diameter than the casing O.D. across usable water zones.

Plan to drill a 9-7/8" hole and set 120' of 7" OD, 20#, J-55 surface casing; then plan to drill a 6-1/4" hole to total depth with gel-water-mud program to test Pictured Cliffs Formation. Plan to run IES and CDL logs. If determined productive, will run 4-1/2". 10.5#, J-55 casing, selectively perforate, frac, clean out after frac and complete well.

**CEMENTING PROGRAM:** All volumes are contingent upon Caliper logs.

Surface- Cement with 60 sx (71 cu. ft.) Class "G" neat.  
Circulate to surface.

Production Stage- Cement with 105 sx (215 cu. ft.) Class "G" with 2% Lodense and 1/4#  
cello flake/sk followed by 60 sx (71 cu. ft.) class "G" with 1/4# cello flake/sk.

Total cement slurry for production stage is 286 cu. ft. Circulate to surface.

An adequate spacer will be pumped ahead of the cement slurry to help prevent mud contamination of the cement. An adequate number of casing centralizers will be run through usable water zones to ensure that casing is centralized through these zones. The adequate number of centralizers will be determined based on API standards. Centralizers to impart a swirling action around the casing will be used just below and into the base of the lowest usable water zone. These devices will assist mud displacement, increase cement bonding potential and create an effective hydraulic seal. A chronological log will be kept which records the pump rate, pump pressure, slurry density, and slurry volume for the cement job. The log will be sent to the BLM after completion of the job.

**WELLHEAD EQUIPMENT - PRESSURE CONTROL:** See Exhibit "D"

Huber 7" X 4-1/2" casing head, 1000#WP, tested to 2000#  
Huber 4-1/2" X 2-7/8" tubing head, 1000#WP, tested to 2000#

BOP and Related Equipment will include for a 2000 psi system;

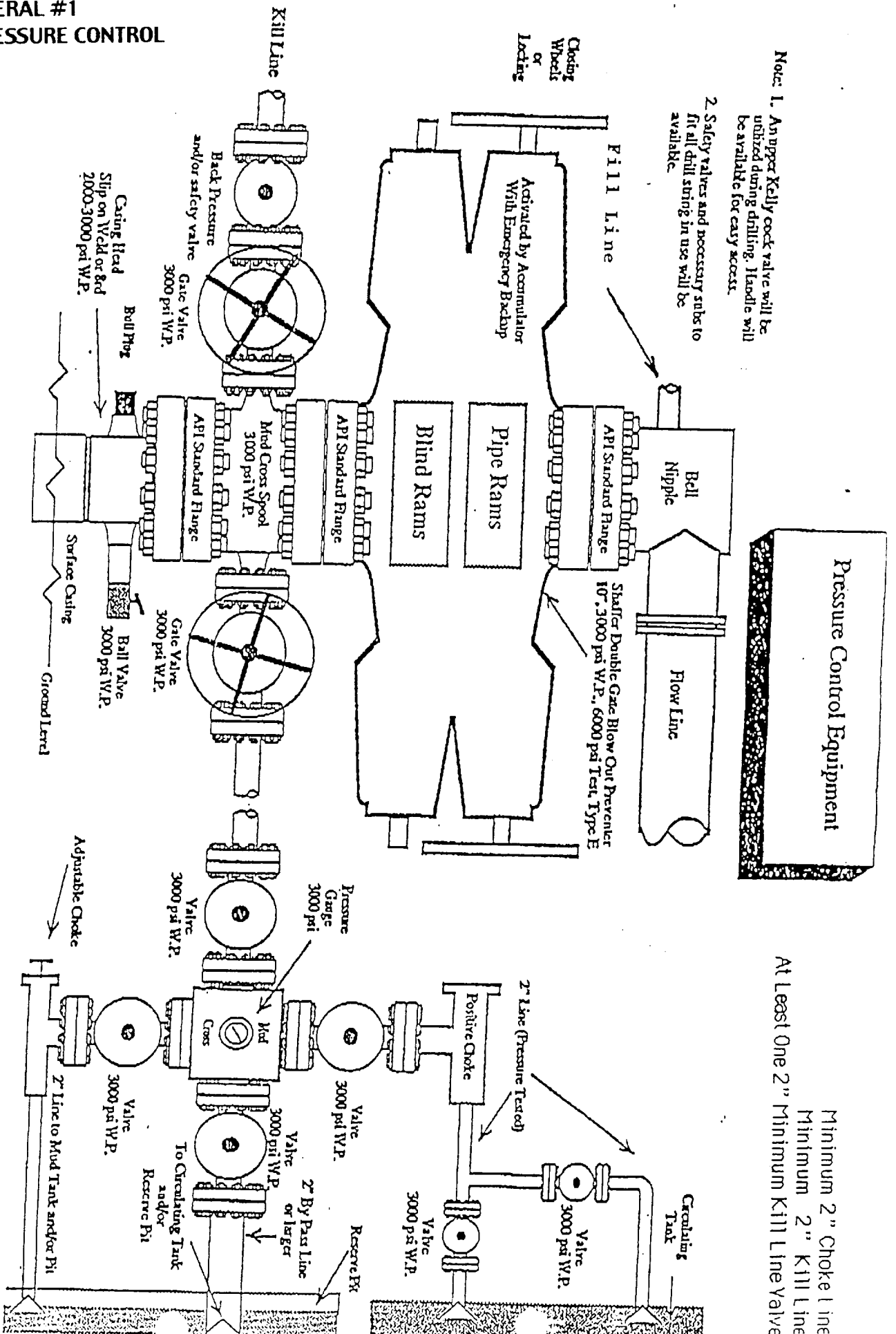
No abnormal pressures or hazardous zones are anticipated.

**Ryleybart Federal #1**

**Page 1 - Exh. B**  
POO,NE24.27/13FC

**RYLEYBART FEDERAL #1**  
**EXHIBIT "D" - PRESSURE CONTROL**  
**EQUIPMENT**

Note: This equipment is designed to meet requirements for a 2-M rating standard per 43 CFR part 3160 (amended). Proper operation and testing of equipment will be carried out per standard. 2,000 psi equipment can be substituted in the drawing to meet minimum requirements per standard.



Minimum 2" Choke line  
 Minimum 2" Kill Line  
 At Least One 2" Minimum Kill Line Valve