

UNITED STATES  
DEPARTMENT OF THE INTERIOR  
BUREAU OF LAND MANAGEMENT

APPLICATION FOR PERMIT TO DRILL, DEEPEN, OR PLUG BACK

|   |   |
|---|---|
| 1a. Type of Work<br>DRILL   | 5. Lease Number<br>SF-078001--B<br>Unit Reporting Number  |
| 1b. Type of Well<br>GAS   | 6. If Indian, All. or Tribe   |
| 2. Operator<br><b>BURLINGTON RESOURCES</b> Oil & Gas Company  | 7. Unit Agreement Name<br>Huerfano Unit   |
| 3. Address & Phone No. of Operator<br>PO Box 4289, Farmington, NM 87499<br>(505) 326-9700               | 8. Farm or Lease Name<br>Huerfano Unit<br>9. Well Number<br>#127E   |
| 4. Location of Well<br>1350' FSL, 1950' FWL<br>Latitude 36° 27.3, Longitude 107° 52.1                   | 10. Field, Pool, Wildcat<br>Basin Dakota<br>11. Sec., Twn, Rge, Mer. (NMPM)<br>K Sec. 26, T-26-N, R-10-W<br>API # 30-045- |
| 14. Distance in Miles from Nearest Town<br>26 miles from P.O. in Bloomfield, NM<br>San Juan NM          | 12. County<br>San Juan<br>13. State<br>NM   |
| 15. Distance from Proposed Location to Nearest Property or Lease Line<br>1350'                          | 17. Acres Assigned to Well<br>320 W/2   |
| 16. Acres in Lease  |   |
| 18. Distance from Proposed Location to Nearest Well, Drig, Compl, or Applied for on this Lease<br>2515' |   |
| 19. Proposed Depth<br>6825'   | 20. Rotary or Cable Tools<br>Rotary   |
| 21. Elevations (DF, FT, GR, Etc.)<br>6733' GR   | 22. Approx. Date Work will Start  |
| 23. Proposed Casing and Cementing Program<br>See Operations Plan attached                               |   |
| 24. Authorized by: <u>[Signature]</u><br>Regulatory/Compliance Supervisor                               | Date <u>1-2-01</u>  |

PERMIT NO. \_\_\_\_\_ APPROVAL DATE 11/9/01  
APPROVED BY Asst. Jim Lovato TITLE \_\_\_\_\_ DATE \_\_\_\_\_

Archaeological Report to be submitted

Threatened and Endangered Species Report to be submitted

NOTE: This format is issued in lieu of U.S. BLM Form 3160-3

Title 18 U.S.C. Section 1001, makes it a crime for any person knowingly and willfully to make to any department or agency of the United States any false, fictitious or fraudulent statements or presentations as to any matter within its jurisdiction.

DISTRICT I  
1625 N. French Dr., Hobbs, N.M. 88240

State of New Mexico  
Energy, Minerals & Natural Resources Department

Form C-102  
Revised August 15, 2000

DISTRICT II  
811 South First, Artesia, N.M. 88210

DISTRICT III  
1000 Rio Brazos Rd., Aztec, N.M. 87410

DISTRICT IV  
2040 South Pacheco, Santa Fe, NM 87505

OIL CONSERVATION DIVISION

2040 South Pacheco  
Santa Fe, NM 87505

Submit to Appropriate District Office  
State Lease - 4 Copies  
Fee Lease - 3 Copies

☐ AMENDED REPORT

WELL LOCATION AND ACREAGE DEDICATION PLAT

|   |  |  |
|---|--|--|
| <sup>1</sup> API Number<br>30-045- <b>30550</b> | <sup>2</sup> Pool Code<br>71599                                      | <sup>3</sup> Pool Name<br>Basin Dakota |
| <sup>4</sup> Property Code<br>7139              | <sup>5</sup> Property Name<br>HUERFANO UNIT                          | <sup>6</sup> Well Number<br>127E       |
| <sup>7</sup> OGRID No.<br>14538                 | <sup>8</sup> Operator Name<br>BURLINGTON RESOURCES OIL AND GAS, INC. | <sup>9</sup> Elevation<br>6733'        |

<sup>10</sup> Surface Location

| UL or lot no. | Section | Township | Range | Lot Idn | Feet from the | North/South line | Feet from the | East/West line | County   |
|---------------|---------|----------|-------|---------|---------------|------------------|---------------|----------------|----------|
| K             | 26      | 26-N     | 10-W  |         | 1350'         | SOUTH            | 1950'         | WEST           | SAN JUAN |

<sup>11</sup> Bottom Hole Location If Different From Surface

| UL or lot no.                          | Section | Township | Range                         | Lot Idn | Feet from the                    | North/South line | Feet from the           | East/West line | County |
|--|---------|----------|-------------------------------|---------|----------------------------------|------------------|-------------------------|----------------|--------|
|  |         |          |                               |         |                                  |                  |                         |                |        |
| <sup>12</sup> Dedicated Acres<br>W/320 |         |          | <sup>13</sup> Joint or Infill |         | <sup>14</sup> Consolidation Code |                  | <sup>15</sup> Order No. |                |        |

NO ALLOWABLE WILL BE ASSIGNED TO THIS COMPLETION UNTIL ALL INTERESTS HAVE BEEN CONSOLIDATED  
OR A NON-STANDARD UNIT HAS BEEN APPROVED BY THE DIVISION

|   |   |
|---|---|
| <p>16</p> <p>FD 2 1/2" BC<br/>GLO 1933</p> <p>USA SF-078001-B — 26 —</p> <p>N 00-03-00 E<br/>2634.22' (M)</p> <p>1950'</p> <p>LAT: 36°27.3' N.<br/>LONG: 107°52.1' W.</p> <p>1350'</p> <p>FD 2 1/2" BC<br/>GLO 1933</p> <p>N 89-51-39 E<br/>2651.46' (M)</p> <p>FD 2 1/2" BC<br/>GLO 1933</p> | <p>17 OPERATOR CERTIFICATION</p> <p>I hereby certify that the information contained herein is true and complete to the best of my knowledge and belief.</p> <p><u>Peggy Cole</u><br/>Signature<br/>Peggy Cole<br/>Printed Name<br/>Regulatory Supervisor<br/>Title<br/>Date 1-12-01</p> <p>18 SURVEYOR CERTIFICATION</p> <p>I hereby certify that the well location shown on this plat was plotted from field notes of actual surveys made by me or under my supervision, and that the same is true and correct to the best of my belief.</p> <p>11-3-00<br/>Date of Survey<br/>Signature and Seal of Professional Surveyor:<br/>ROY A. RUSH<br/>NEW MEXICO<br/>REGISTERED PROFESSIONAL LAND SURVEYOR<br/>8894<br/>Certificate Number</p> |
|---|---|

BURLINGTON RESOURCES OIL & GAS, INC.

HUERFANO UNIT #127E

SW/4 SEC. 26, T-26-N, R-10-W, N.M.P.M.

SAN JUAN COUNTY, NEW MEXICO

1350' FSL 1950' FWL

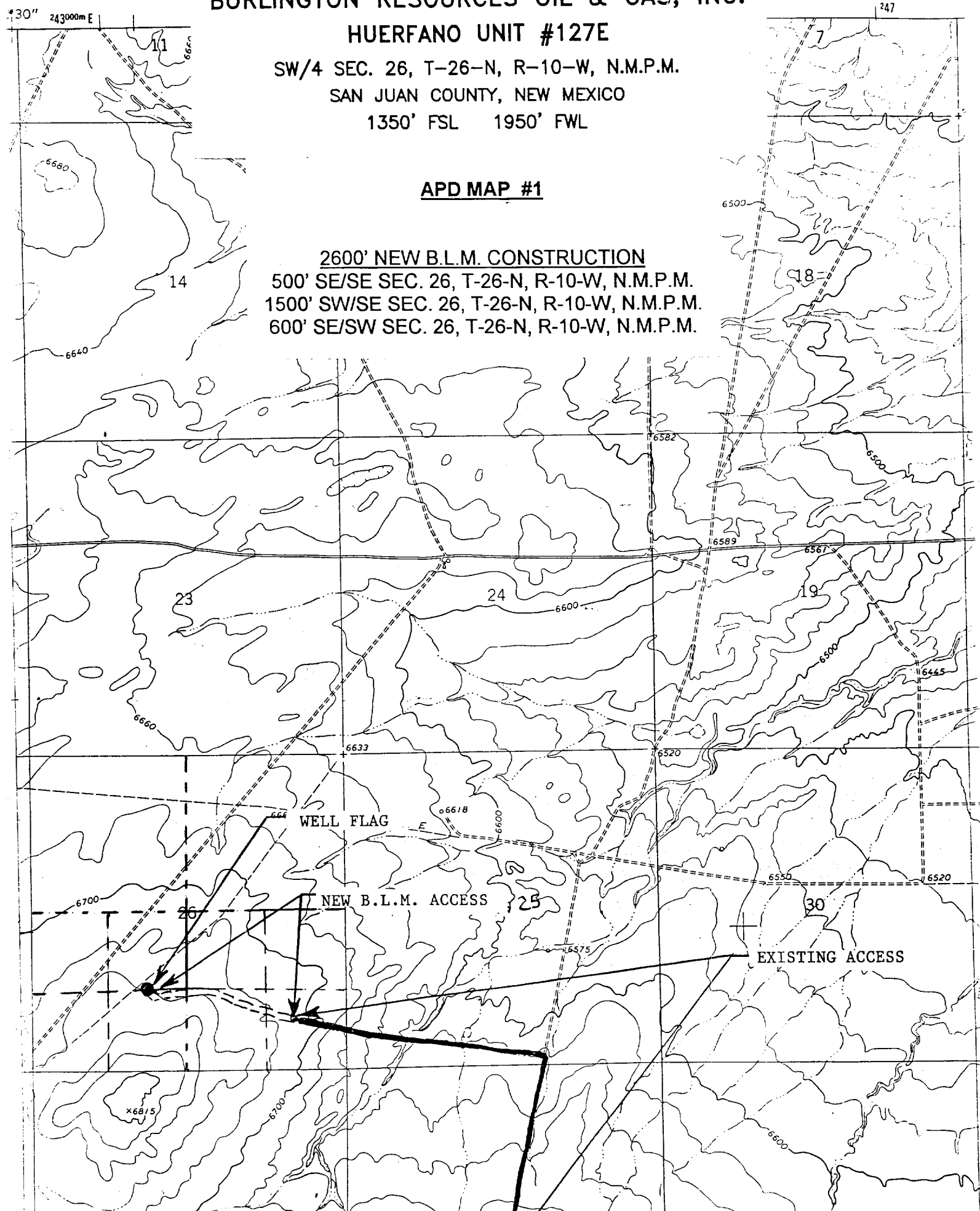
APD MAP #1

2600' NEW B.L.M. CONSTRUCTION

500' SE/SE SEC. 26, T-26-N, R-10-W, N.M.P.M.

1500' SW/SE SEC. 26, T-26-N, R-10-W, N.M.P.M.

600' SE/SW SEC. 26, T-26-N, R-10-W, N.M.P.M.



## OPERATIONS PLAN

**Well Name:** Huerfano Unit #127E  
**Location:** 1350' FSL, 1950' FWL, Sec.26, T-26-N, R-10-W  
San Juan County, NM  
Latitude 36° 27.3'N, Longitude 107° 52.1'W  
**Formation:** Basin Dakota  
**Elevation:** 6733'GL

| <u>Formation Tops:</u> | <u>Top</u> | <u>Bottom</u> | <u>Contents</u> |
|------------------------|------------|---------------|-----------------|
| Surface                | San Jose   | 1230'         |                 |
| Ojo Alamo              | 1230'      | 1395'         | aquifer         |
| Kirtland               | 1395'      | 1710'         | gas             |
| Fruitland              | 1710'      | 2170'         |                 |
| Pictured Cliffs        | 2170'      | 2345'         | gas             |
| Lewis                  | 2345'      | 2545'         | gas             |
| Mesaverde              | 2545'      | 3040'         | gas             |
| Chacra                 | 3040'      | 3735'         | gas             |
| Massive Cliff House    | 3735'      | 3770'         | gas             |
| Menefee                | 3770'      | 4575'         | gas             |
| Massive Point Lookout  | 4575'      | 4965'         | gas             |
| Mancos Shale           | 4965'      | 5610'         | gas             |
| Gallup                 | 5610'      | 6565'         | gas             |
| Greenhorn              | 6565'      | 6620'         | gas             |
| Graneros               | 6620'      | 6675'         | gas             |
| Dakota                 | 6675'      | 6825'         | gas             |
| TD                     | 6825'      |               |                 |

### Logging Program:

Open hole logs - none  
Cased hole logs - CBL/GR - TD to surface.  
Cores - none

### Mud Program:

| <u>Interval</u> | <u>Type</u> | <u>Weight</u> | <u>Vis.</u> | <u>Fluid Loss</u> |
|-----------------|-------------|---------------|-------------|-------------------|
| 0- 320'         | Spud        | 8.4-8.9       | 40-50       | no control        |
| 320-6825'       | LSND        | 8.4-9.0       | 40-60       | 8-12              |

Pit levels will be visually monitored to detect gain or loss of fluid control.

### Casing Program:

| <u>Hole Size</u> | <u>Depth Interval</u> | <u>Csg.Size</u> | <u>Wt.</u> | <u>Grade</u> |
|------------------|-----------------------|-----------------|------------|--------------|
| 12 1/4"          | 0' - 320'             | 8 5/8"          | 24.0#      | WC-50        |
| 7 7/8"           | 0' - 6825'            | 4 1/2"          | 10.5#      | J-55         |

### Tubing Program:

0' - 6825'      2 3/8"      4.7#      J-55 EUE

### BOP Specifications, Wellhead and Tests:

#### Surface to TD -

11" 3000 psi minimum double gate BOP stack (Reference Figure #1).  
After nipple-up prior to drilling out surface casing, rams and casing will be tested to 600 psi for 30 minutes.

2" nominal, 3000 psi minimum choke manifold (Reference Figure #3).

**Completion Operations -**

6" 3000 psi double gate BOP stack (Reference Figure #2).

After nipple-up prior to completion, pipe rams and casing top will be tested to 3000 psi for 15 minutes.

**Surface to Total Depth -**

2" nominal, 3000 psi minimum choke manifold (Reference Figure #3).

**Wellhead -**

8 5/8" x 4 1/2" x 2 3/8" x 3000 psi tree assembly.

**General -**

- Pipe rams will be actuated once each day and blind rams will be actuated once each trip to test proper functioning.
- An upper kelly cock valve with handle available and drill string valves to fit each drill string will be available on the rig floors at all times.
- A BOP pit level drill will be conducted weekly for each drilling crew.
- All of the BOP tests and drills will be recorded in the daily drilling reports.
- Blind and pipe rams will be equipped with extension hand wheels.

**Cementing:**

8 5/8" surface casing -

Cement to surface w/336 sx Class "G" cement w/3% calcium chloride and 1/4#/sx cellophane flakes (396 cu.ft. of slurry, 200% excess to circulate to surface.) WOC 8 hr prior to drilling out surface casing. Test casing to 600 psi for 30 minutes.

Saw tooth guide shoe on bottom. Bowspring centralizers will be run in accordance with Onshore Order #2.

Production Casing - 4 1/2"

4 1/2" production casing -

Lead w/741 sx Litecrete, 0.11% dispersant. Tail w/323 sx 50/50 Class "G" poz w/5% gel, 0.25 pps celloflakes, 5 pps gilsonite, 0.25% fluid loss, 0.15% dispersant, 0.1% retarder (2332 cu. ft. of slurry, 50% excess.) *Circulate*

Note: If open hole logs are run, cement volumes will be based on 25% excess over caliper volumes.

Float shoe on bottom. Three centralizers run every other joint above shoe. Thirty-five centralizers - one every 4th joint to the base of the Ojo Alamo @ 1395'. Two turbolizing type centralizers - one below and one into the base of the Ojo Alamo @ 1395'. Standard centralizers thereafter every fourth joint up to the base of the surface pipe.