

District I  
PO Box 1980, Hobbs, NM 88241-1980  
District II  
811 S. 1st Street, Artesia, NM 88210-2834  
District III  
1000 Rio Brazos Rd., Aztec, NM 87410  
District IV  
2040 South Pacheco, Santa Fe, NM 87505

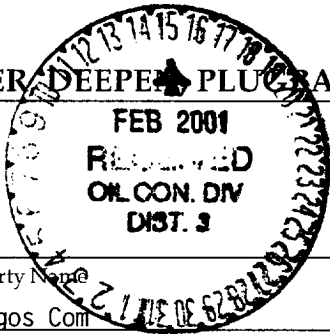
State of New Mexico  
Energy, Minerals & Natural Resources Department

OIL CONSERVATION DIVISION  
2040 South Pacheco  
Santa Fe, NM 87505

Form C-101  
Revised October 18, 199  
Instructions on back  
Submit to Appropriate District Office  
State Lease - 6 Copies  
Fee Lease - 5 Copies

☐ AMENDED REPORT

APPLICATION FOR PERMIT TO DRILL, RE-ENTER, DEEPEN, PLUG BACK, OR ADD A ZONE

<sup>1</sup> Operator name and Address Cross Timbers Operating Company 2700 Farmington Ave., Bldg. K. Ste 1 Farmington, NM 87401			<sup>2</sup> OGRID Number 167067
			<sup>3</sup> API Number 30-0 45-30560
<sup>4</sup> Property Code 22719	<sup>5</sup> Property Name Gallegos Com		<sup>6</sup> Well No. #5E

<sup>7</sup> Surface Location

UL or lot no.	Section	Township	Range	Lot. Idn	Feet from the	North/South Line	Feet from the	East/West line	County
K	32	26N	11W		1,500'	South	1,500	West	San Juan

<sup>8</sup> Proposed Bottom Hole Location If Different From Surface

UL or lot no.	Section	Township	Range	Lot. Idn	Feet from the	North/South Line	Feet from the	East/West line	County

<sup>9</sup> Proposed Pool 1

Basin Dakota

<sup>10</sup> Proposed Pool 2

<sup>11</sup> Work Type Code N	<sup>12</sup> Well Type Code G	<sup>13</sup> Cable/Rotary R	<sup>14</sup> Lease Type Code S	<sup>15</sup> Ground Level Elevation 6,277' Ground Level
<sup>16</sup> Multiple No	<sup>17</sup> Proposed Depth 6,225' -	<sup>18</sup> Formation Dakota	<sup>19</sup> Contractor Bearcat Drilling	<sup>20</sup> Spud Date March 1, 2001

<sup>21</sup> Proposed Casing and Cement Program

Hole Size	Casing Size	Casing weight/foot	Setting Depth	Sacks of Cement	Estimated TOC
12-1/4"	8-5/8"	24.0 #/ft	370'	+277 sx	Surface -
7-7/8"	4-1/2"	10.5 #/ft	6,225' -	+900 sx	Surface -

<sup>22</sup> Describe the proposed program. If this application is to DEEPEN or PLUG BACK give the data on the present productive zone and proposed new productive zone. Describe the blowout prevention program, if any. Use additional sheets if necessary.

Dr1 to 370' Run new 8-5/8" csg. Cmt csg w/277 sx cl "B" cmt (15.6 ppg, 1.18 cuft/sx) w/2% CaCl & 1/4# Celloflake. Attempt to circ cmt to surface. NU BOP. Test BOP. Mix mud. Drill ahead w/7-7/8 hole.

Dr1 to TD (@ 6,225'). Log well. Run new 4-1/2" csg to btm. Cmt csg with approx +-700 sx Lite-Crete cmt w/1/4# celloflake @ 9.5 ppg, 2.51 cuft/sx followed by +-200 sx cl "G" 50/50 poz cmt mixed @ 13.0 ppg, 1.42 cuft/sx. Attempt to circ cmt to surface. Final cement volumes will be determined from caliper log + 30%. See enclosed drawing for BOP stack configuration.

<sup>23</sup> I hereby certify that the information given above is true and complete to the best of my knowledge and belief.

Signature:

Printed name: Jeffrey W. Patton

Title: Drilling Engineer

OIL CONSERVATION DIVISION

Approved by:

Title:

Approval Date:

DEPUTY OIL & GAS INSPECTOR, DIST. 30

FEB 15 2001

Expiration Date:

FEB 15 2002

DISTRICT II  
P.O. Drawer DD, Artesia, N.M. 88211-0719

DISTRICT III  
1000 Rio Brazos Rd., Aztec, N.M. 87410

DISTRICT IV  
PO Box 2088, Santa Fe, NM 87504-2088

## OIL CONSERVATION DIVISION

P.O. Box 2088  
Santa Fe, NM 87504-2088

Submit to Appropriate District Office  
State Lease - 4 Copies  
Fee Lease - 3 Copies

☐ AMENDED REPORT

## WELL LOCATION AND ACREAGE DEDICATION PLAT

<sup>1</sup> API Number 30-045-30560	<sup>2</sup> Pool Code 71599	<sup>3</sup> Pool Name BASIN DAKOTA
<sup>4</sup> Property Code 22719	<sup>5</sup> Property Name GALLEGOS COM	<sup>6</sup> Well Number 5E
<sup>7</sup> OGRID No. 167067	<sup>8</sup> Operator Name CROSS TIMBERS OPERATING CO.	<sup>9</sup> Elevation 6277' -

<sup>10</sup> Surface Location

UL or lot no.	Section	Township	Range	Lot ldn	Feet from the	North/South line	Feet from the	East/West line	County
K	32	26-N	11-W		1500'	SOUTH	1500'	WEST	SAN JUAN

<sup>11</sup>Bottom Hole Location If Different From Surface

UL or lot no.	Section	Township	Range	Lot Idn	Feet from the	North/South line	Feet from the	East/West line	County
<sup>12</sup> Dedicated Acres 320 5/2		<sup>13</sup> Joint or Infill I			<sup>14</sup> Consolidation Code		<sup>15</sup> Order No.		

NO ALLOWABLE WILL BE ASSIGNED TO THIS COMPLETION UNTIL ALL INTERESTS HAVE BEEN CONSOLIDATED  
OR A NON-STANDARD UNIT HAS BEEN APPROVED BY THE DIVISION

17 OPERATOR CERTIFICATION

I hereby certify that the information contained herein is true and complete to the best of my knowledge and belief

Signature Jeffrey W. Patton  
Printed Name JEFFREY W. PATTON  
Title DRILLING ENGINEER  
Date 2-16-01

## 18 SURVEYOR CERTIFICATION

I hereby certify that the well location shown on this plat was plotted from field notes of actual surveys made by me or under my supervision, and that the same is true and correct to the best of my belief.

2-1-1907

ROY A. RUSH

NEW MEXICO

REGISTRAR AND SURVEYOR

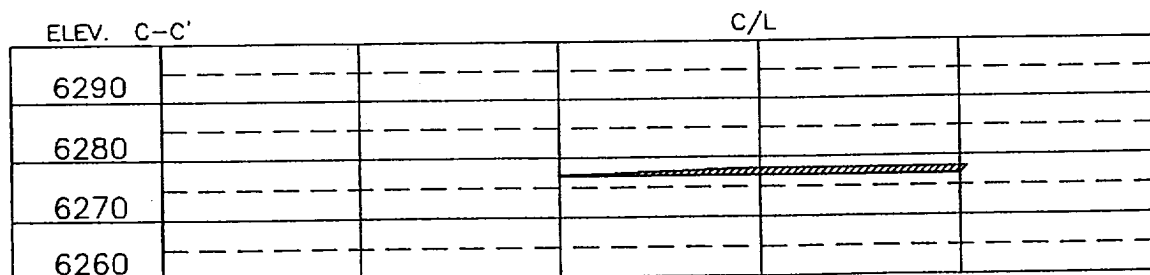
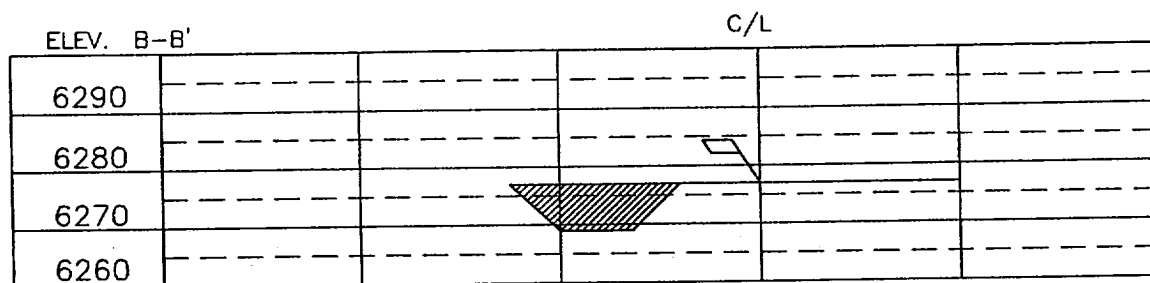
PROFESSIONAL SURVEYOR

8894

8894

Certificate Number

LAT. = 36°26'29" N.  
LONG. = 108°01'52.5" W.

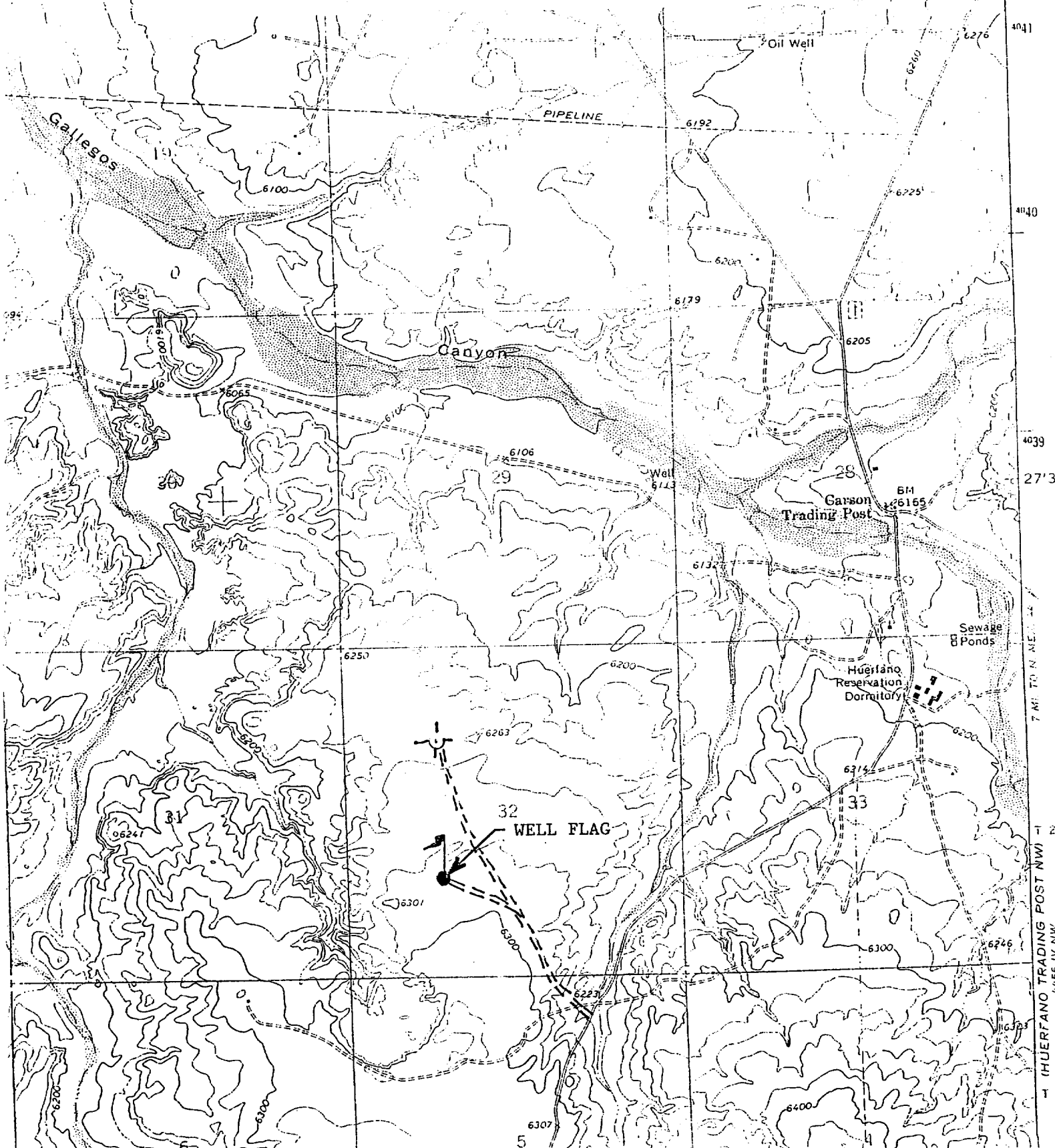


DRAWN BY: B.S.      ROW#: CR039      CADFILE: CR039CF8      DATE: 2/14/01

**Daggett Enterprises, Inc.**  
**Surveying and Oil Field Services**  
 P. O. Box 15068 Farmington, NM 87401  
 Phone (505) 326-1772 Fax (505) 326-6019

CROSS TIMBERS OPERATING COMPANY  
GALLEGOS COM #5E

SW/4 SEC. 32, T-26-N, R-11-W, N.M.P.M.,  
SAN JUAN COUNTY, NEW MEXICO  
1500' FSL 1500' FWL





Cross Timbers Operating Company

# BOP SCHEMATIC FOR DRILLING OPERATIONS CLASS 1 (2M) NORMAL PRESSURE

## TESTING PROCEDURE

1. Test BOP after installation:

Pressure test BOP to 200-300  
psig (low pressure) for 5 min.

Test BOP to Working Press or  
to 70% internal yield of surf csg  
(10 min).

2. Test operation of (both) rams  
on every trip.

3. Check and record Accumulator  
pressure on every tour.

4. Re-pressure test BOP stack after  
changing out rams.

5. Have kelly cock valve with handle available.

6. Have safety valve and subs to fit all sizes of  
drill string.

ROTATING HEAD  
(OPTIONAL)

FILL UP LINE

FLOW LINE  
TO PIT

BLIND  
RAMS

PIPE  
RAMS

KILL LINE  
2" dia min.

TO CHOKE  
MANIFOLD  
2" dia min.

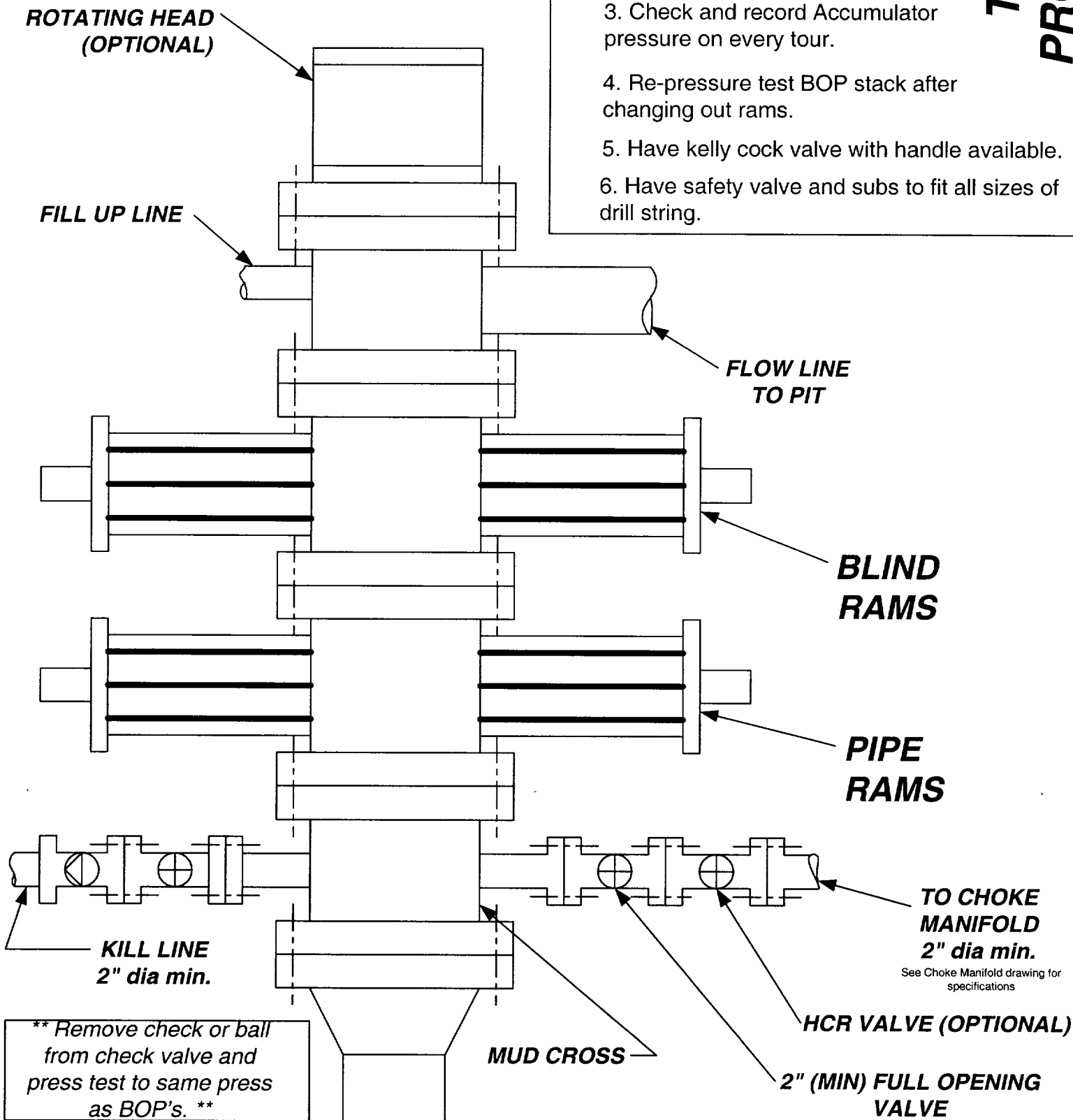
See Choke Manifold drawing for  
specifications

HCR VALVE (OPTIONAL)

MUD CROSS

2" (MIN) FULL OPENING  
VALVE

\*\* Remove check or ball  
from check valve and  
press test to same press  
as BOP's. \*\*





Cross Timbers Operating Company

# CHOKE MANIFOLD SCHEMATIC FOR DRILLING OPERATIONS CLASS 1 (2M) NORMAL PRESSURE

1. Stake all lines from choke manifold to pit.
2. Pressure test choke manifold after installation.
3. Pressure test manifold at the same time with the BOP Stack. Test manifold to the same test pressures.

## TESTING PROCEDURE

