

District I
1625 N. French Dr., Hobbs, NM 88240
District II
811 South First, Artesia, NM 88210
District III
1000 Rio Brazos Road, Aztec, NM 87410
District IV
2040 South Pacheco, Santa Fe, NM 87505

State of New Mexico
Energy Minerals and Natural Resources

Form C-101
Revised March 17, 1999

Oil Conservation Division
2040 South Pacheco
Santa Fe, NM 87505

Submit to appropriate District Office
State Lease - 6 Copies
Fee Lease - 5 Copies

☐ AMENDED REPORT

APPLICATION FOR PERMIT TO DRILL, RE-ENTER, DEEPEN, PLUG BACK, OR ADD A ZONE

¹ Operator Name and Address Robert L. Bayless, Producer LLC P.O. Box 168 Farmington, NM 87499		² OGRID Number 150182
³ Property Code 28543	⁵ Property Name Greer	³ API Number 30-045-30583
		⁶ Well No. 2 E

7 Surface Location

UL or lot no.	Section	Township	Range	Lot Idn	Feet from the	North/South line	Feet from the	East/West line	County
3	2	26 N	11 W		900	North	1640	West	San Juan

8 Proposed Bottom Hole Location If Different From Surface

UL or lot no.	Section	Township	Range	Lot Idn	Feet from the	North/South line	Feet from the	East/West line	County
⁹ Proposed Pool 1 Basin Dakota					¹⁰ Proposed Pool 2				

¹¹ Work Type Code N -	¹² Well Type Code G -	¹³ Cable/Rotary Rotary	¹⁴ Lease Type Code State -	¹⁵ Ground Level Elevation 6364 -
¹⁶ Multiple N	¹⁷ Proposed Depth 6600 -	¹⁸ Formation Dakota	¹⁹ Contractor Unknown	²⁰ Spud Date ASAP

21 Proposed Casing and Cement Program

Hole Size	Casing Size	Casing weight/foot	Setting Depth	Sacks of Cement	Estimated TOC
12 1/4	8 5/8	24.0	320' min	150 sx	Surface -
7 7/8	4 1/2	10.5	6600 -	810 sx	Surface -

22 Describe the proposed program. If this application is to DEEPEN or PLUG BACK, give the data on the present productive zone and proposed new productive zone. Describe the blowout prevention program, if any. Use additional sheets if necessary.
Drill 12 1/4" hole to 220 feet and set 220 feet of 8 5/8" 24.0 #/ft J-55 casing. Cement with 150 sx (180 cf) Class G cement, circulated to surface. Drill 7 7/8" hole to 6620 feet using clear water, natural mud, and fluid loss additives. No abnormal temperatures of pressures are anticipated. Induction and density logs will be run. Set 6620 feet of 4 1/2" 10.5 #/ft J-55 new casing. Cement with 810 sx (1510 cf) Class G cement, circulated to surface. BOP will be 2000 psi service as per attached diagram. Pipeline connection will be part of this application as per attached drawing.

Estimated Formation Tops:

Ojo Alamo 800 feet
Kirtland 910 feet
Fruitland 1550 feet
Pictured Cliffs 1840 feet
Gallup 5430 feet
Dakota 6405 feet

²³ I hereby certify that the information given above is true and complete to the best of my knowledge and belief.

Signature:

Printed name: Price M. Bayless

Title: Engineer

Date:

01/31/01

Phone:

505 326-2659

OIL CONSERVATION DIVISION

Approved by:

Title: DEPUTY OIL & GAS INSPECTOR, DIST. #3

Approval Date:

MAR - 5 2001

Expiration Date:

MAR - 5 2002

Conditions of Approval:

Attached ☐

District I
PO Box 1980, Hobbs, NM 88241-1980
District II
PO Drawer DD, Artesia, NM 88211-0719
District III
1000 Rio Brazos Rd., Aztec, NM 87410
District IV
PO Box 2088, Santa Fe, NM 87504-2088

State of New Mexico
Energy, Minerals & Natural Resources Department

OIL CONSERVATION DIVISION
PO Box 2088
Santa Fe, NM 87504-2088

Form C-102
Revised February 2, 1994
Instructions on back
Submit to Appropriate District Office
State Lease - 4 Copies
Fee Lease - 3 Copies

☐ AMENDED REPORT

WELL LOCATION AND ACREAGE DEDICATION PLAT

¹ API Number 30-045-30583	² Pool Code 71599	³ Pool Name BASIN DAKOTA
⁴ Property Code 27543	⁵ Property Name GREER	⁶ Well Number 2E
⁷ OGRID No. 150182	⁸ Operator Name ROBERT L. BAYLESS, PRODUCER LLC	⁹ Elevation 6364 -

¹⁰ Surface Location

UL or lot no.	Section	Township	Range	Lot Ida	Feet from the	North/South line	Feet from the	East/West line	County
3	2	26 N	11 W		900	North	1640	West	San Juan

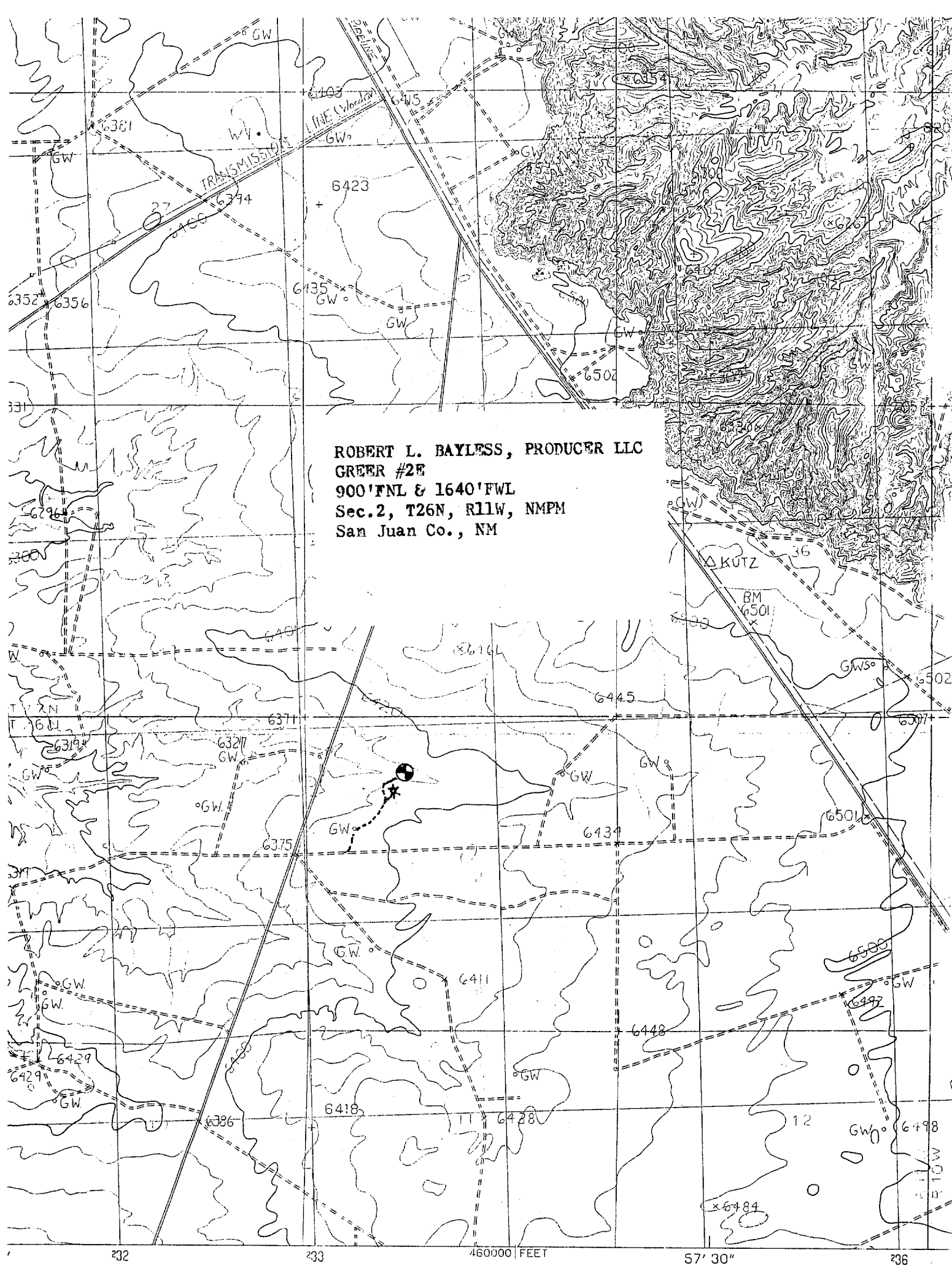
¹¹ Bottom Hole Location If Different From Surface

UL or lot no.	Section	Township	Range	Lot Ida	Feet from the	North/South line	Feet from the	East/West line	County

¹² Dedicated Acres N. 318.96	¹³ Joint or Infill I	¹⁴ Consolidation Code	¹⁵ Order No.
--	------------------------------------	----------------------------------	-------------------------

NO ALLOWABLE WILL BE ASSIGNED TO THIS COMPLETION UNTIL ALL INTERESTS HAVE BEEN CONSOLIDATED
OR A NON-STANDARD UNIT HAS BEEN APPROVED BY THE DIVISION

<p>Sec 2</p>	<p>¹⁷ OPERATOR CERTIFICATION</p> <p>I hereby certify that the information contained herein is true and complete to the best of my knowledge and belief.</p> <p>Signature: <u>PRICE M. BAYLESS</u></p> <p>Printed Name: PRICE M. BAYLESS</p> <p>Title: ENGINEER</p> <p>Date: MARCH 1, 2001</p>
	<p>¹⁸ SURVEYOR CERTIFICATION</p> <p>I hereby certify that the well location shown on this plat was plotted from field notes of actual surveys made by me or under my supervision, and that the same is true and correct to the best of my belief.</p> <p>Date of Survey: <u>MARCH 1, 2001</u></p> <p>Signature and Seal of Professional Surveyor: <u>William S. Mahake II</u></p> <p>Certificate Number: 8466</p>



Robert L Bayless, Producer LLC
Well Control Equipment Schematic for 2M Service

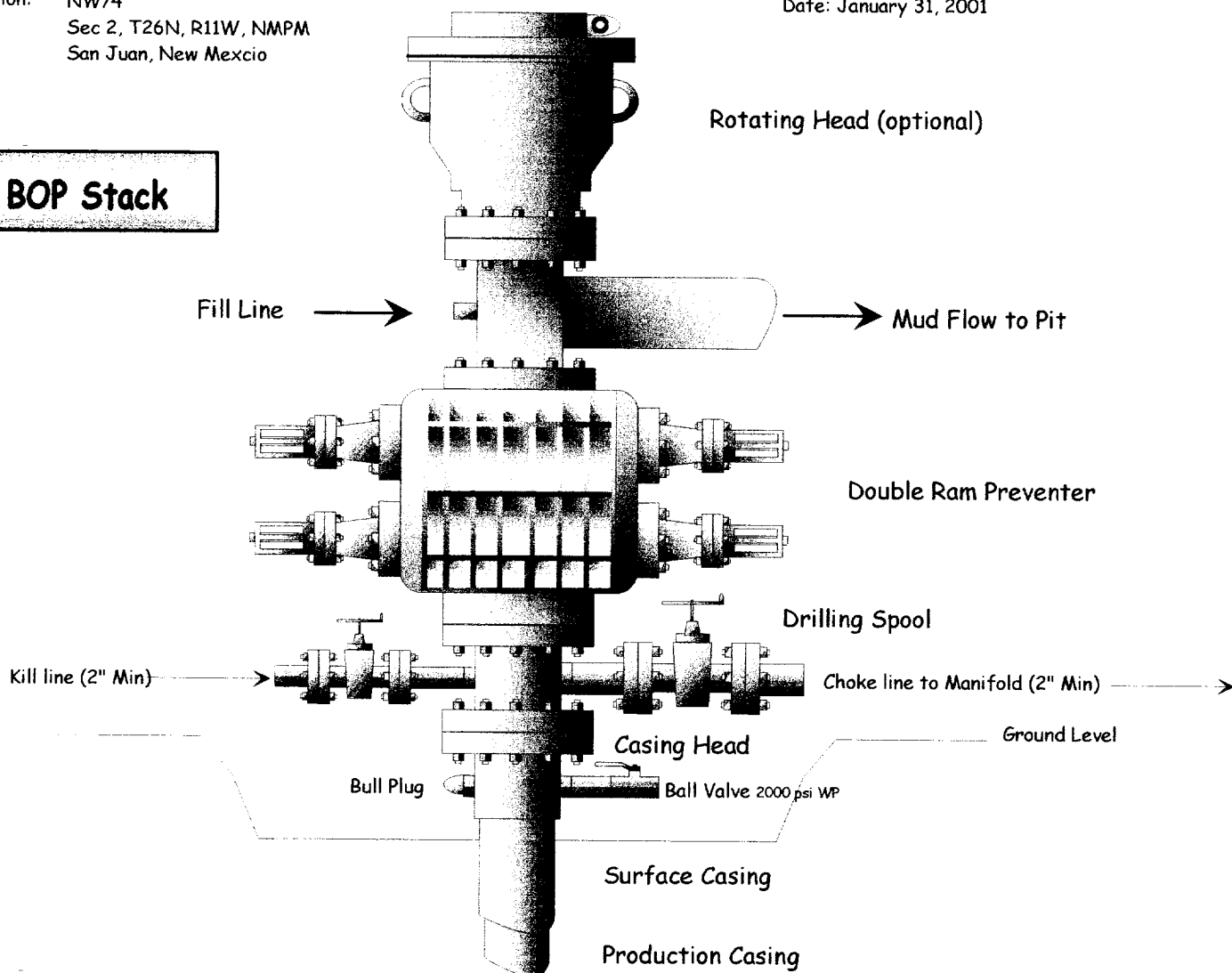
Attachment to OCD Form C-101

Greer #2 E

Location: NW/4
Sec 2, T26N, R11W, NMPM
San Juan, New Mexico

Date: January 31, 2001

BOP Stack



**Choke & Kill
Manifold**

