



2001 JUN -7 PM 1:59

FORM APPROVED  
OMB No. 1004-0136  
Expires November 30, 2000

APPLICATION FOR PERMIT TO DRILL OR REENTER

1a. Type of Work: <input checked="" type="checkbox"/> DRILL <input type="checkbox"/> REENTER		5. Lease Serial No. <b>NO-G-9909-1359X</b>
b. Type of Well: <input type="checkbox"/> Oil Well <input checked="" type="checkbox"/> Gas Well <input type="checkbox"/> Other <input checked="" type="checkbox"/> Single Zone <input type="checkbox"/> Multiple Zone		6. If Indian, Allottee or Tribe Name
2. Name of Operator <b>Coleman Oil and Gas Company</b>		7. If Unit or CA Agreement, Name and No. <b>28858</b>
3a. Address <b>c/o Walsh Engineering, 7415 E. Main, Farmington, NM 87402</b>		8. Lease Name and Well No. <b>Clinton #1</b>
3b. Phone No. (include area code) <b>505.327.4892</b>		9. API Well No. <b>30-045-30694</b>
4. Location of Well (Report location clearly and in accordance with any State requirements. *) At surface <b>1800' FSL and 760' FWL</b> At proposed prod. Zone		10. Field and Pool, or Exploratory <b>Gallegos Fruitland Sand-PC</b>
14. Distance in miles and direction from nearest town or post office* <b>15 miles south of Farmington, NM</b>		11. Sec., T., R., M., or Blk. and Survey or Area <b>Section 24, T26N, R12W</b>
15. Distance from proposed* location to nearest property or lease line, ft. (Also to nearest drig. unit line, if any) <b>760'</b>	16. No. of Acres in lease <b>160</b>	12. County or Parish <b>San Juan</b>
17. Spacing Unit dedicated to this well <b>160 acres SW/4</b>	18. Distance from proposed* location to nearest well, drilling, completed, applied for, on this lease, ft. <b>1970'</b>	13. State <b>NM</b>
19. Proposed Depth <b>1435</b>	20. BLM/BIA Bond No. on file <b>013002853</b>	
21. Elevations (Show whether DF, KDB, RT, GL, etc.) <b>6190' GL</b>	22. Approximate date work will start* <b>August 2001</b>	23. Estimated duration <b>2 weeks</b>

24. Attachments

The following, completed in accordance with the requirements of Onshore Oil and Gas Order No. 1, shall be attached to this form:

- |  |   |
|--|---|
| 1. Well plat certified by a registered surveyor.   | 4. Bond to cover the operations unless covered by an existing bond on file (see Item 20 above).   |
| 2. A Drilling Plan.  | 5. Operator certification.  |
| 3. A Surface Use Plan (if the location is on National Forest System Lands, the SUPO shall be filed with the appropriate Forest Service Office. | 6. Such other site specific information and/or plans as may be required by the authorized office. |

25. Signature <i>Paul C. Thompson</i>	Name (Printed/Typed) <b>Paul C. Thompson, P.E.</b>	Date <b>6/5/01</b>
Title <b>Agent</b>		
Approved by (Signature)	Name (Printed/Typed)	Date <b>9/10/01</b>
Title <b>Office</b>		

Application approval does not warrant or certify that the applicant holds legal or equitable title to those rights in the subject lease which would entitle the applicant to conduct operations thereon.

Conditions of approval, if any, are attached.

Title 18 U.S.C. Section 1001 and Title 43 U.S.C. Section 1212, make it a crime for any person knowingly and willfully to make to any department or agency of the United States any false, fictitious or fraudulent statements or representations as to any matter within its jurisdiction.

\*(Instructions on reverse)

This action is subject to technical and procedural review pursuant to 43 CFR 3165.3 and appeal pursuant to 43 CFR 3165.4.

ALL INFORMATION CONTAINED HEREIN IS UNCLASSIFIED EXCEPT WHERE SHOWN OTHERWISE WITH ATTACHED "GENERAL REQUIREMENTS".

NMCCD

District I  
PO Box 1980, Hobbs, NM 88241-1980

District II  
PO Drawer DD, Artesia, NM 88211-0719

District III  
1000 Rio Brazos Rd., Aztec, NM 87410

District IV  
PO Box 2088, Santa Fe, NM 87504-2088

State of New Mexico  
Energy, Minerals & Natural Resources Department

OIL CONSERVATION DIVISION  
PO Box 2088  
Santa Fe, NM 87504-2088

Form C-102  
Revised February 21, 1994  
Instructions on back  
Submit to Appropriate District Office  
State Lease - 4 Copies  
Fee Lease - 3 Copies

☐ AMENDED REPORT

### WELL LOCATION AND ACREAGE DEDICATION PLAT

*API Number <b>30-045-30694</b>		*Pool Code <b>77310</b>	*Pool Name <b>3 GALLEGOS FRUITLAND SAND PICTURED CLIFFS, SOUTH</b>
*Property Code <b>28858</b>	*Property Name <b>CLINTON</b>		*Well Number <b>1</b>
*OGRID No. <b>004838</b>	*Operator Name <b>COLEMAN OIL &amp; GAS, INC.</b>		*Elevation <b>6190'</b>

#### 10 Surface Location

UL or lot no.	Section	Township	Range	Lot Idn	Feet from the	North/South line	Feet from the	East/West line	County
L	24	26N	12W		1800	SOUTH	760	WEST	SAN JUAN

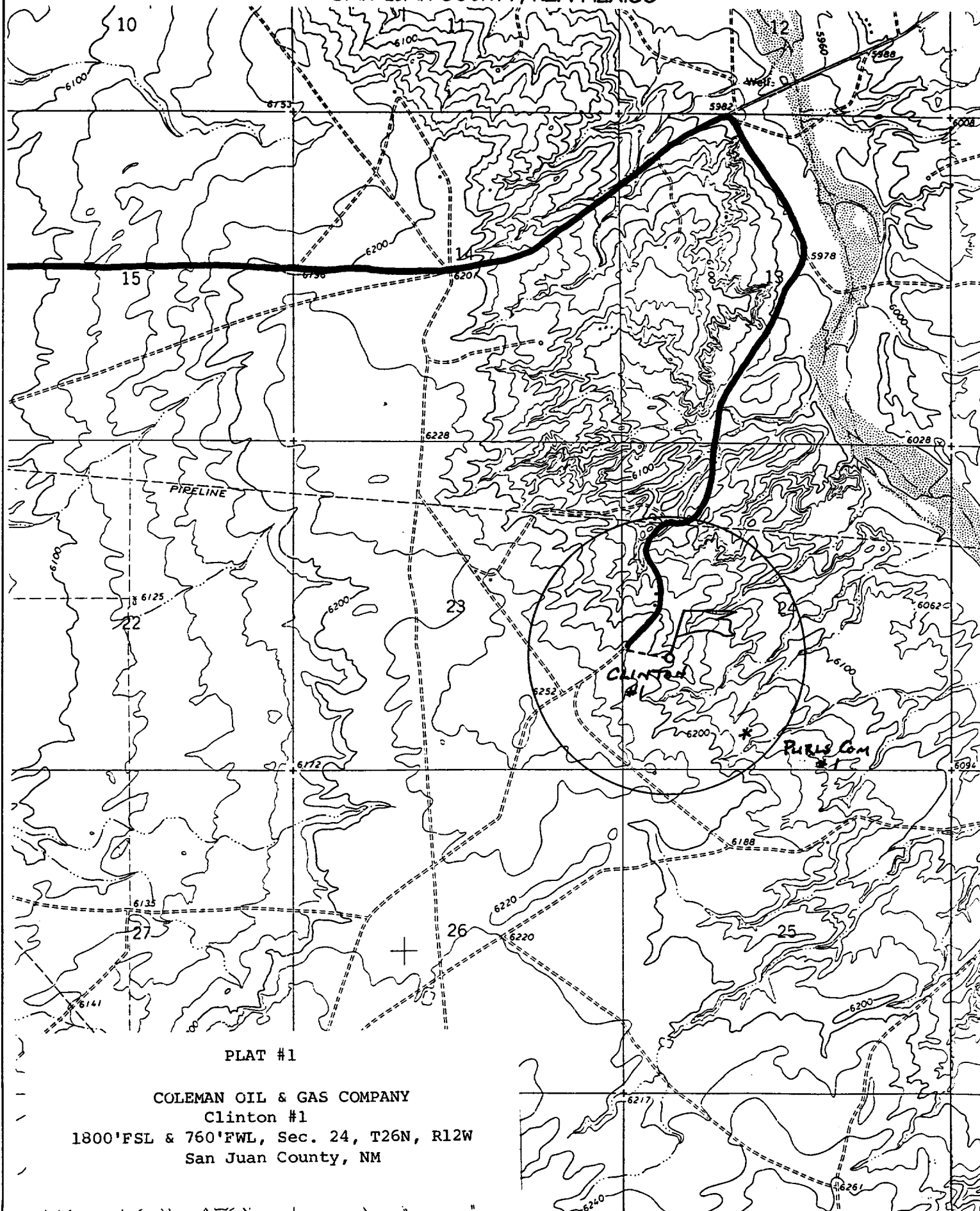
#### 11 Bottom Hole Location If Different From Surface

UL or lot no.	Section	Township	Range	Lot Idn	Feet from the	North/South line	Feet from the	East/West line	County
12 Dedicated Acres <b>160 Acres - (SW/4)</b>					13 Joint or Infill <b>Y</b>	14 Consolidation Code	15 Order No.		

NO ALLOWABLE WILL BE ASSIGNED TO THIS COMPLETION UNTIL ALL INTERESTS HAVE BEEN CONSOLIDATED  
OR A NON-STANDARD UNIT HAS BEEN APPROVED BY THE DIVISION

<div>15</div> <div>5283.96'</div> <div>5280.00'</div> <div>760'</div> <div>1800'</div> <div>5282.64'</div> <div>NO-G-9909-1359</div> <div>24</div> <div>SEP 2001 RECEIVED OIL CON. DIV DIST. 3</div>	<div>17 OPERATOR CERTIFICATION</div> <div>I hereby certify that the information contained herein is true and complete to the best of my knowledge and belief</div> <div><i>Paul C. Thompson</i></div> <div>Signature</div> <div>Paul C. Thompson</div> <div>Printed Name</div> <div>Agent</div> <div>Title</div> <div>6/5/01</div> <div>Date</div>
	<div>18 SURVEYOR CERTIFICATION</div> <div>I hereby certify that the well location shown on this plat was plotted from field notes of actual surveys made by me or under my supervision, and that the same is true and correct to the best of my belief.</div> <div>MAY 16, 2001</div> <div>Date of Survey</div> <div><i>Neale G. Edwards</i></div> <div>Signature and Seal of Surveyor</div> <div>NEALE G. EDWARDS NEW MEXICO 6857</div> <div>Certificate Number 6857</div>

1800' FSL & 760' FWL, SECTION 24, T26N, R12W, N.M.P.M.  
SAN JUAN COUNTY, NEW MEXICO



COLEMAN OIL AND GAS  
OPERATIONS PLAN  
Clinton #1

I. Location: 1800' FSL & 760' FWL  
Sec 24 T26N R12W  
San Juan County, NM

Date: June 4, 2001

Field: Gallegos Fruitland Sand/ PC  
Surface: Navajo Allotted  
Minerals: NO-G-9909-1359

Elev: GL 6190'

II. Geology: Surface formation \_ Nacimiento

<u>A. Formation Tops</u>	<u>Depths</u>
Ojo Alamo	245'
Kirtland	360'
Fruitland	1120'
Fruitland Coal	1290'
Pictured Cliffs	1310'
Total Depth	1435'

Estimated depths of anticipated water, oil, gas, and other mineral bearing formations which are expected to be encountered:

Water and gas - 1120'; gas - 1310'.

B. Logging Program: Induction/GR and density logs at TD.

C. No over pressured zones are expected in this well. No H<sub>2</sub>S zones will be penetrated in this well. Max. BHP = 500 psig.

III. Drilling

A. Contractor:

B. Mud Program:

The surface hole will be drilled with a fresh water mud.

The production hole will be drilled with a fresh water polymer mud. The weighting material will be drill solids or if conditions dictate, barite. The maximum mud weight expected is 8.5 ppg.

C. Minimum Blowout Control Specifications:

Double ram type or annular type 2000 psi working pressure BOP with a rotating head. See the attached exhibits (#1 through #3) for details on the BOP equipment. All ram type preventers and related equipment will be hydraulically tested at nipple-up and after any use under pressure to 1000 psi.

C. Cont.

The blind rams will be hydraulically activated and checked for operational readiness each time pipe is pulled out of the hole. All checks of the BOP stack and equipment will be noted on the daily drilling report. The BOP equipment will include a kelly cock, floor safety valve, and choke manifold all rated to 2000 psi.

#### IV. Materials

##### A. Casing Program:

Hole Size	Depth	Casing Size	Wt. & Grade
8-3/4"	120'	7"	20# J-55
6-1/4"	1390'	4-1/2"	10.5# J-55

##### B. Float Equipment:

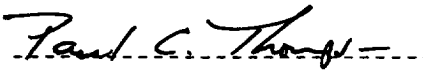
a) Surface Casing: None

b) Production Casing: 4-1/2" cement guide shoe and self fill insert float collar. Place float one joint above shoe. Five centralizers spaced every other joint above shoe and five turbolizers every other joint from the top of the well.

#### V. Cementing:

Surface casing: 7" - Use 30 sx (36 cu. ft.) of Cl "B" with 2% CaCl<sub>2</sub> and ¼ #/sk. celloflake. Yield = 1.18 cu. ft./sk; slurry weight = 15.6 PPG). 100% excess to circulate cement to surface. WOC 12 hours. Pressure test surface casing to 600 psi for 30 min.

Production Casing: 4-1/2" - Before cementing circulate hole with at least 1-1/2 hole volumes of mud. Precede cement with 30 bbls of fresh water. Lead with 115 sx (237 cu.ft) of Cl "B" with 2% metasilicate and ¼ #/sk. celloflake. (Yield = 2.06 cu.ft./sk; slurry weight = 12.5 PPG). Tail with 50 sx (59 cu.ft.) of Cl "B" with 2% CaCl<sub>2</sub> and ¼ #/sk. celloflake (Yield = 1.18 cu. ft./sk; slurry weight = 15.6 PPG). Total cement volume is 296 cu.ft. (100% excess to circulate cement to surface).

  
Paul C. Thompson, P.E.