

DISTRICT I  
1825 N. French Dr., Hobbs, N.M. 88240

DISTRICT II  
811 South First, Artesia, N.M. 88210

DISTRICT III  
1000 Rio Brazos Rd., Aztec, N.M. 87410

DISTRICT IV  
2040 South Pacheco, Santa Fe, NM 87505

State of New Mexico  
Energy, Minerals & Natural Resources Department

OIL CONSERVATION DIVISION

2040 South Pacheco  
Santa Fe, NM 87505

Form C-102  
Revised August 15, 2000

Submit to Appropriate District Office  
State Lease - 4 Copies  
Fee Lease - 3 Copies

☐ AMENDED REPORT

WELL LOCATION AND ACREAGE DEDICATION PLAT

*API Number 30-045- 30824		*Pool Code 71439	*Pool Name Ballard Pictured Cliffs
*Property Code 7309	*Property Name McMANUS		*Well Number 7R
*GRID No. 14538	*Operator Name BURLINGTON RESOURCES OIL & GAS, INC.		*Elevation 6447'

<sup>10</sup> Surface Location

UL or lot no.	Section	Township	Range	Lot Idn	Feet from the	North/South line	Feet from the	East/West line	County
1	31	26-N	8-W		1750	SOUTH	765	EAST	SAN JUAN

<sup>11</sup> Bottom Hole Location If Different From Surface

UL or lot no.	Section	Township	Range	Lot Idn	Feet from the	North/South line	Feet from the	East/West line	County
*Dedicated Acres PC 121.82 SE/2			*Joint or Infill		*Consolidation Code		*Order No.		

NO ALLOWABLE WILL BE ASSIGNED TO THIS COMPLETION UNTIL ALL INTERESTS HAVE BEEN CONSOLIDATED  
OR A NON-STANDARD UNIT HAS BEEN APPROVED BY THE DIVISION

16		FD B.L.M. BC. 1956		N 89-44-16 W 2593.92' (M)		FD B.L.M. BC. 1956		17 OPERATOR CERTIFICATION I hereby certify that the information contained herein is true and complete to the best of my knowledge and belief.  Signature <u>Peggy Cole</u> Printed Name <u>Peggy Cole</u> Regulatory Supervisor Title Date <u>7-11-01</u>	
LOT 1		LOT 6		LOT 5		LOT 8 (M)		5305.23'	
LOT 2		LOT 7		LOT 8		LOT 9 W		N 01-26-43 W	
LOT 12		LOT 11		LOT 10 NM-04226		LOT 16		765'	
LOT 13		LOT 14		LOT 15		LOT 16		1750'	
LOT 13		LOT 14		LOT 15		LOT 16		1326'	
LOT 13		LOT 14		LOT 15		LOT 16		1750'	
LOT 13		LOT 14		LOT 15		LOT 16		1326'	
LOT 13		LOT 14		LOT 15		LOT 16		1750'	
LOT 13		LOT 14		LOT 15		LOT 16		1326'	
LOT 13		LOT 14		LOT 15		LOT 16		1750'	
LOT 13		LOT 14		LOT 15		LOT 16		1326'	
LOT 13		LOT 14		LOT 15		LOT 16		1750'	
LOT 13		LOT 14		LOT 15		LOT 16		1326'	
LOT 13		LOT 14		LOT 15		LOT 16		1750'	
LOT 13		LOT 14		LOT 15		LOT 16		1326'	
LOT 13		LOT 14		LOT 15		LOT 16		1750'	
LOT 13		LOT 14		LOT 15		LOT 16		1326'	
LOT 13		LOT 14		LOT 15		LOT 16		1750'	
LOT 13		LOT 14		LOT 15		LOT 16		1326'	
LOT 13		LOT 14		LOT 15		LOT 16		1750'	
LOT 13		LOT 14		LOT 15		LOT 16		1326'	
LOT 13		LOT 14		LOT 15		LOT 16		1750'	
LOT 13		LOT 14		LOT 15		LOT 16		1326'	
LOT 13		LOT 14		LOT 15		LOT 16		1750'	
LOT 13		LOT 14		LOT 15		LOT 16		1326'	
LOT 13		LOT 14		LOT 15		LOT 16		1750'	
LOT 13		LOT 14		LOT 15		LOT 16		1326'	
LOT 13		LOT 14		LOT 15		LOT 16		1750'	
LOT 13		LOT 14		LOT 15		LOT 16		1326'	
LOT 13		LOT 14		LOT 15		LOT 16		1750'	
LOT 13		LOT 14		LOT 15		LOT 16		1326'	
LOT 13		LOT 14		LOT 15		LOT 16		1750'	
LOT 13		LOT 14		LOT 15		LOT 16		1326'	
LOT 13		LOT 14		LOT 15		LOT 16		1750'	
LOT 13		LOT 14		LOT 15		LOT 16		1326'	
LOT 13		LOT 14		LOT 15		LOT 16		1750'	
LOT 13		LOT 14		LOT 15		LOT 16		1326'	
LOT 13		LOT 14		LOT 15		LOT 16		1750'	
LOT 13		LOT 14		LOT 15		LOT 16		1326'	
LOT 13		LOT 14		LOT 15		LOT 16		1750'	
LOT 13		LOT 14		LOT 15		LOT 16		1326'	
LOT 13		LOT 14		LOT 15		LOT 16		1750'	
LOT 13		LOT 14		LOT 15		LOT 16		1326'	
LOT 13		LOT 14		LOT 15		LOT 16		1750'	
LOT 13		LOT 14		LOT 15		LOT 16		1326'	
LOT 13		LOT 14		LOT 15		LOT 16		1750'	
LOT 13		LOT 14		LOT 15		LOT 16		1326'	
LOT 13		LOT 14		LOT 15		LOT 16		1750'	
LOT 13		LOT 14		LOT 15		LOT 16		1326'	
LOT 13		LOT 14		LOT 15		LOT 16		1750'	
LOT 13		LOT 14		LOT 15		LOT 16		1326'	
LOT 13		LOT 14		LOT 15		LOT 16		1750'	
LOT 13		LOT 14		LOT 15		LOT 16		1326'	
LOT 13		LOT 14		LOT 15		LOT 16		1750'	
LOT 13		LOT 14		LOT 15		LOT 16		1326'	
LOT 13		LOT 14		LOT 15		LOT 16		1750'	
LOT 13		LOT 14		LOT 15		LOT 16		1326'	
LOT 13		LOT 14		LOT 15		LOT 16		1750'	
LOT 13		LOT 14		LOT 15		LOT 16		1326'	
LOT 13		LOT 14		LOT 15		LOT 16		1750'	
LOT 13		LOT 14		LOT 15		LOT 16		1326'	
LOT 13		LOT 14		LOT 15		LOT 16		1750'	
LOT 13		LOT 14		LOT 15		LOT 16		1326'	
LOT 13		LOT 14		LOT 15		LOT 16		1750'	
LOT 13		LOT 14		LOT 15		LOT 16		1326'	
LOT 13		LOT 14		LOT 15		LOT 16		1750'	
LOT 13		LOT 14		LOT 15		LOT 16		1326'	
LOT 13		LOT 14		LOT 15		LOT 16		1750'	
LOT 13		LOT 14		LOT 15		LOT 16		1326'	
LOT 13		LOT 14		LOT 15		LOT 16		1750'	
LOT 13		LOT 14		LOT 15		LOT 16		1326'	
LOT 13		LOT 14		LOT 15		LOT 16		1750'	
LOT 13		LOT 14		LOT 15		LOT 16		1326'	
LOT 13		LOT 14		LOT 15		LOT 16		1750'	
LOT 13		LOT 14		LOT 15		LOT 16		1326'	
LOT 13		LOT 14		LOT 15		LOT 16		1750'	
LOT 13		LOT 14		LOT 15		LOT 16		1326'	
LOT 13		LOT 14		LOT 15		LOT 16		1750'	
LOT 13		LOT 14		LOT 15		LOT 16		1326'	
LOT 13		LOT 14		LOT 15		LOT 16		1750'	
LOT 13		LOT 14		LOT 15		LOT 16		1326'	
LOT 13		LOT 14		LOT 15		LOT 16		1750'	
LOT 13		LOT 14		LOT 15		LOT 16		1326'	
LOT 13		LOT 14		LOT 15		LOT 16		1750'	
LOT 13		LOT 14		LOT 15		LOT 16		1326'	
LOT 13		LOT 14		LOT 15		LOT 16		1750'	
LOT 13		LOT 14		LOT 15		LOT 16		1326'	
LOT 13		LOT 14		LOT 15		LOT 16		1750'	
LOT 13		LOT 14		LOT 15		LOT 16		1326'	
LOT 13		LOT 14		LOT 15		LOT 16		1750'	
LOT 13		LOT 14		LOT 15		LOT 16		1326'	
LOT 13		LOT 14		LOT 15		LOT 16		1750'	
LOT 13		LOT 14		LOT 15		LOT 16		1326'	
LOT 13		LOT 14		LOT 15		LOT 16		1750'	
LOT 13		LOT 14		LOT 15		LOT 16		1326'	
LOT 13		LOT 14		LOT 15		LOT 16		1750'	
LOT 13		LOT 14		LOT 15		LOT 16		1326'	
LOT 13		LOT 14		LOT 15		LOT 16		1750'	
LOT 13		LOT 14		LOT 15		LOT 16		1326'	
LOT 13		LOT 14		LOT 15		LOT 16		1750'	
LOT 13		LOT 14		LOT 15		LOT 16		1326'	
LOT 13		LOT 14		LOT 15		LOT 16		1750'	
LOT 13		LOT 14		LOT 15		LOT 16		1326'	
LOT 13		LOT 14		LOT 15		LOT 16		1750'	
LOT 13		LOT 14		LOT 15		LOT 16		1326'	
LOT 13		LOT 14		LOT 15		LOT 16		1750'	
LOT 13		LOT 14		LOT 15		LOT 16		1326'	
LOT 13		LOT 14		LOT 15		LOT 16		1750'	
LOT 13		LOT 14		LOT 15		LOT 16		1326'	
LOT 13		LOT 14		LOT 15		LOT 16		1750'	
LOT 13		LOT 14		LOT 15		LOT 16		1326'	
LOT 13		LOT 14		LOT 15		LOT 16		1750'	
LOT 13		LOT 14		LOT 15		LOT 16		1326'	
LOT 13		LOT 14		LOT 15		LOT 16		1750'	
LOT 13		LOT 14		LOT 15		LOT 16		1326'	
LOT 13		LOT 14		LOT 15		LOT 16		1750'	
LOT 13		LOT 14		LOT 15		LOT 16		1326'	
LOT 13		LOT 14		LOT 15		LOT 16		1750'	
LOT 13		LOT 14		LOT 15		LOT 16		1326'	
LOT 13		LOT 14		LOT 15		LOT 16		1750'	
LOT 13		LOT 14		LOT 15		LOT 16		1326'	
LOT 13		LOT 14		LOT 15		LOT 16		1750'	
LOT 13		LOT 14		LOT 15		LOT 16		1326'	
LOT 13		LOT 14		LOT 15		LOT 16		1750'	
LOT 13		LOT 14		LOT 15		LOT 16		1326'	
LOT 13		LOT 14		LOT 15		LOT 16		1750'	
LOT 13		LOT 14		LOT 15		LOT 16		1326'	
LOT 13		LOT 14		LOT 15		LOT 16		1750'	
LOT 13		LOT 14		LOT 15		LOT 16		1326'	
LOT 13		LOT 14		LOT 15		LOT 16		1750'	
LOT 13		LOT 14		LOT 15		LOT 16		1326'	
LOT 13		LOT 14		LOT 15		LOT 16		1750'	
LOT 13		LOT 14		LOT 15		LOT 16		1326'	
LOT 13		LOT 14		LOT 15		LOT 16		1750'	
LOT 13		LOT 14		LOT 15		LOT 16		1326'	
LOT 13		LOT 14		LOT 15		LOT 16		1750'	
LOT 13		LOT 14		LOT 15		LOT 16		1326'	
LOT 13		LOT 14		LOT 15		LOT 16		1750'	
LOT 13		LOT 14		LOT 15		LOT 16		1326'	
LOT 13		LOT 14		LOT 15		LOT 16		1750'	
LOT 13		LOT 14		LOT 15		LOT 16		1326'	
LOT 13		LOT 14		LOT 15		LOT 16		1750'	
LOT 13		LOT 14		LOT 15		LOT 16		1326'	
LOT 13		LOT 14		LOT 15		LOT 16		1750'	
LOT 13		LOT 14		LOT 15		LOT 16		1326'	
LOT 13		LOT 14		LOT 15		LOT 16		1750'	
LOT 13		LOT 14		LOT 15		LOT 16		1326'	
LOT 13		LOT 14		LOT 15		LOT 16		1750'	
LOT 13		LOT 14		LOT 15		LOT 16		1326'	
LOT 13		LOT 14		LOT 15		LOT 16		1750'	
LOT 13		LOT 14		LOT 15		LOT 16		1326'	
LOT 13		LOT 14		LOT 15		LOT 16		1750'	
LOT 13		LOT 14		LOT 15		LOT 16		1326'	
LOT 13		LOT 14		LOT 15		LOT 16		1750'	
LOT 13		LOT 14		LOT 15		LOT 16		1326'	
LOT 13		LOT 14		LOT 15		LOT 16		1750'	
LOT 13		LOT 14		LOT 15		LOT 16		1326'	
LOT 13		LOT 14		LOT 15		LOT 16		1750'	
LOT 13		LOT 14		LOT 15		LOT 16		1326'	
LOT 13		LOT 14		LOT 15		LOT 16		1750'	
LOT 13		LOT 14		LOT 15		LOT 16		1326'	
LOT 13		LOT 14		LOT 15		LOT 16		1750'	
LOT 13		LOT 14		LOT 15		LOT 16		1326'	
LOT 13		LOT 14		LOT 15		LOT 16		1750'	
LOT 13		LOT 14		LOT 15		LOT 16		1326'	
LOT 13		LOT 14		LOT 15		LOT 16		1750'	
LOT 13		LOT 14		LOT 15		LOT 16		1326'	
LOT 13		LOT 14		LOT 15		LOT 16		1750'	
LOT 13		LOT 14		LOT 15		LOT 16		1326'	
LOT 13		LOT 14		LOT 15		LOT 16		1750'	

BURLINGTON RESOURCES OIL & GAS, INC.

McMANUS No. 7R

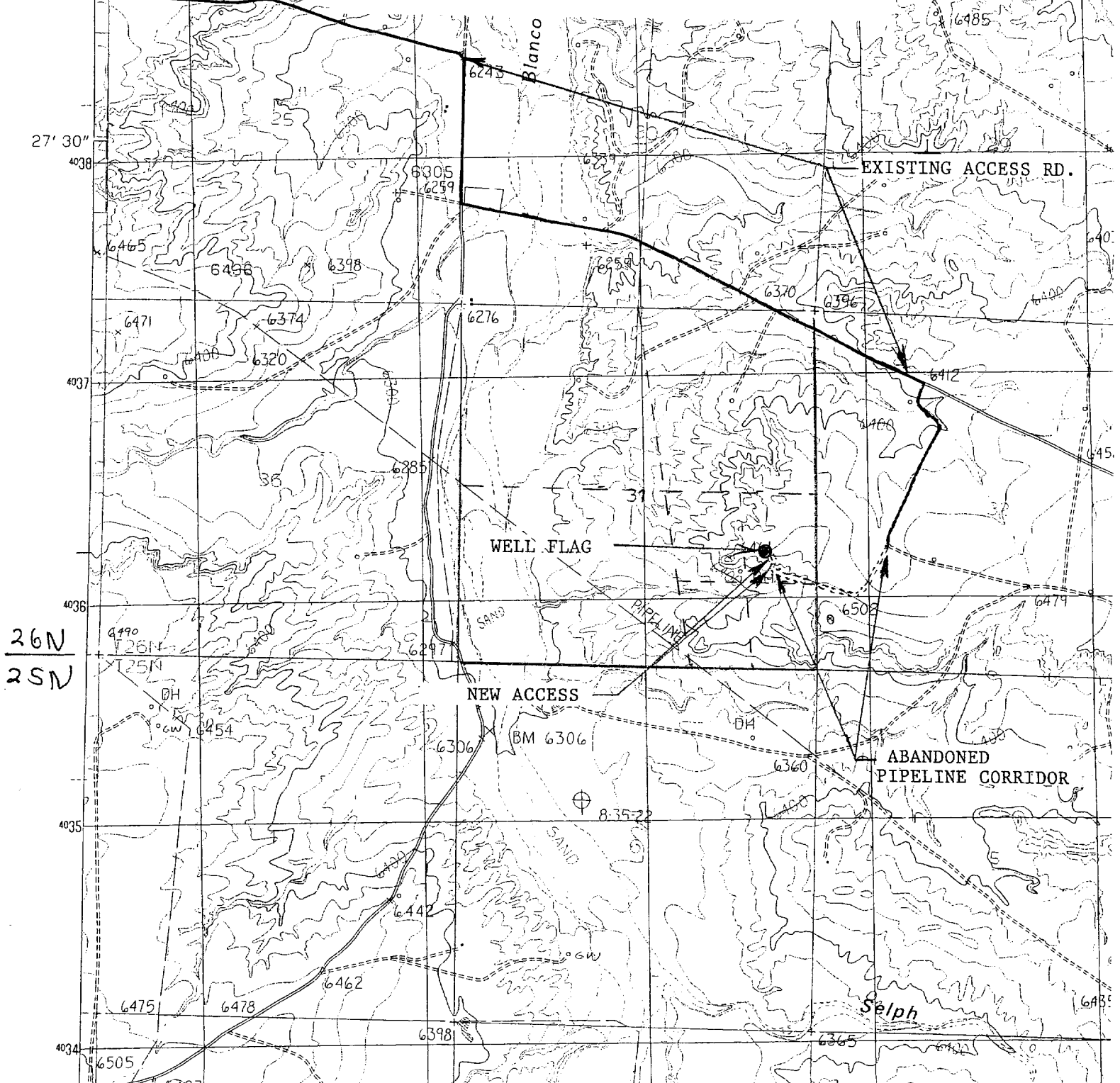
SE/4 SEC. 31, T-26-N, R-8-W, N.M.P.M.

SAN JUAN COUNTY, NEW MEXICO

1750' FSL 765' FEL

APD MAP #1

300' NEW BLM CONSTRUCTION  
NE/4SE/4 SEC. 31, T26N, R8W, N.M.P.M.



## OPERATIONS PLAN

**Well Name:** McManus #7R  
**Location:** 1750' FSL, 765' FEL, Section 31, T-26-N, R-8-W  
San Juan County, New Mexico  
Latitude 36° 26.5', Longitude 107° 43.0'  
**Formation:** Ballard Pictured Cliffs  
**Elevation:** 6447' GR

Formation:	Top	Bottom	Contents
Surface	San Jose	1315'	
Ojo Alamo	1315'	1405'	aquifer
Kirtland	1405'	1841'	gas
Fruitland	1841'	2079'	gas
Pictured Cliffs	2079'		gas
Total Depth	2280'		

**Logging Program:** cased hole - CBL/GR/CCL TD to surface

**Coring Program:** None

**Mud Program:**

Interval	Type	Weight	Vis.	Fluid Loss
0- 120'	Spud	8.4-9.0	40-50	no control
120-2280'	FW	8.4-9.0	32-45	no control

**Casing Program (as listed, equivalent, or better):**

Hole Size	Depth Interval	Csg. Size	Wt.	Grade
9 7/8"	0 - 120'	7"	20#	J-55
6 1/4"	0 - 2280'	2 7/8"	6.5#	J-55

**Float Equipment:** 7" surface casing - saw tooth guide shoe.  
Centralizers will be run in accordance with Onshore Order #2.

2 7/8" production casing - float shoe on bottom. Three centralizers run every other joint above shoe. Seven centralizers run every 3rd joint to the base of the Ojo Alamo @ 1405'. Two turbolizing type centralizers - one below and one into the base of the Ojo Alamo @ 1405'. Standard centralizers thereafter every fourth joint up to the base of the surface pipe.

**Wellhead Equipment:** 7" x 2 7/8" 2000 psi screw on independent wellhead.

**Cementing:**

7" surface casing - cement with 27 sx Class A, B Portland Type I, II cement (32 cu.ft. of slurry, bring cement to surface through 3/4" line). WOC 8 hrs. Test casing to 600 psi for 30 minutes.

2 7/8" production casing - Lead w/301 sx Premium Lite cement w/3% calcium chloride, 1/4 pps flocele, 5 pps LCM-1, 0.4% FL-52, and 0.4% SMS. Tail w/90 sx Type III cement w/1% calcium chloride, 1/4 pps flocele, and 0.2% FL-52 (766 cu.ft. of slurry, 100% excess to circulate to surface).

Note: If open hole logs are run, cement volumes will be based on 25% excess over caliper volumes.

**BOP and tests:**

Surface to TD - 11" 2000 psi (minimum double gate BOP stack (Reference Figure #1). Prior to drilling out surface casing, test rams to 600 psi/30 min.

Completion - 7 1/16" 2000 psi (minimum) double gate BOP stack (Reference Figure #2). Prior to completion operations, test rams and casing to 2000 psi/15 min.

From surface to TD - choke manifold (Reference Figure #3).

Pipe rams will be actuated to least once each day and blind rams actuated once each trip to test proper functioning. An upper kelly cock valve with handle and drill string safety valves to fit each drill string will be maintained and available on the rig floor.

**BOP and tests (If a coiled tubing drilling (CTD) rig is utilized.):**

Surface to TD: 7-1/16" 2000 psi (minimum) Torus annular BOP stack (Reference Figure #1b). Prior to drilling out surface casing, test annular BOP to 600psi/30 min.

Completion: 7-1/16" 2000 psi (minimum) double gate BOP stack (Reference Figure #2). Prior to completion operations, test blind rams and casing to 1500 psi for 30 minutes; all pipe rams and casing to 1500 psi for 30 minutes each. **Same as in original APD operations plan.**

From surface to TD: choke manifold (Reference Figure #3). **Same as in original APD operations plan.**

The annular BOP will be actuated to close on drill pipe (coiled tubing) at least once each day and to close on open hole once each trip to test proper functioning.

**Additional information:**

- \* The Pictured Cliffs formation will be completed.
- \* Anticipated pore pressure for the Pictured Cliffs is 500 psi.
- \* This gas is dedicated.
- \* The southeast quarter of Section 31 is dedicated to the Pictured Cliffs.

  
Drilling Engineer

Date 7/13/01