

UNITED STATES
DEPARTMENT OF THE INTERIOR
BUREAU OF LAND MANAGEMENT

APPLICATION FOR PERMIT TO DRILL OR REENTER

FORM APPROVED
OMB No. 1004-0136
Expires November 30, 2000

1a. Type of Work: ☒ DRILL ☐ REENTER
1b. Type of Well: ☐ Oil Well ☒ Gas Well ☐ Other ☒ Single Zone ☐ Multiple Zone

2. Name of Operator

Coleman Oil and Gas Company

3A. Address

c/o Walsh Engineering, 7415 E. Main, Farmington, NM 87402

3b. Phone No. (include area code)

505.327.4892

4. Location of Well (Report location clearly and in accordance with any State requirements.)*

At surface **1185' FNL and 1190' FWL**

At proposed prod. Zone

14. Distance in miles and direction from nearest town or post office*

15 miles south of Farmington, NM

15. Distance from proposed*
location to nearest
property or lease line, ft.
(Also to nearest drig. unit line, if any)

1185'

16. No. of Acres in lease

159.13 acres

17. Spacing Unit dedicated to this well

159.13 acres NW/4

18. Distance from proposed location*
to nearest well, drilling, completed,
applied for, on this lease, ft.

NA

19. Proposed Depth

1335'

20. BLM/BIA Bond No. on file

08510607 BIA

21. Elevations (Show whether DF, KDB, RT, GL, etc.)

6024' GL

22. Approximate date work will start*

April 2002

23. Estimated duration

2 weeks

24. Attachments

The following, completed in accordance with the requirements of Onshore Oil and Gas Order No. 1, shall be attached to this form:

1. Well plat certified by a registered surveyor.

2. A Drilling Plan.

3. A Surface Use Plan (if the location is on National Forest System Lands, th
SUPO shall be filed with the appropriate Forest Service Office.

4. Bond to cover the operations unless covered by an existing bond on file (see
Item 20 above).

5. Operator certification.

6. Such other site specific information and/or plans as may be required by the
authorized office.

25. Signature

Paul C. Thompson

Name (Printed/Typed)

Paul C. Thompson, P.E.

Date

2/11/02

Title

Agent

Approved by (Signature)

/s/ Charlie Beecham

Name (Printed/Typed)

Office

Date

AUG 23

Title

ACTING

Application approval does not warrant or certify that the applicant holds legal or equitable title to those rights in the subject lease which would
entitle the applicant to conduct operations thereon.

Conditions of approval, if any, are attached.

Title 18 U.S.C. Section 1001 and Title 43 U.S.C. Section 1212, make it a crime for any person knowingly and willfully to make to any department or
agency of the United States any false, fictitious or fraudulent statements or representations as to any matter within its jurisdiction.

*(Instructions on reverse)

District I
PO Box 1980, Hobbs, NM 88241-1980

District II
PO Drawer 00, Artesia, NM 88211-0719

District III
1000 Rio Brazos Rd., Aztec, NM 87410

District IV
PO Box 2088, Santa Fe, NM 87504-2088

State of New Mexico
Energy, Minerals & Natural Resources Dept.

OIL CONSERVATION DIVISION
PO Box 2088
Santa Fe, NM 87504-2088

Form C-102
Revised February 21, 1994
Instructions on back
Submit to Appropriate District Office
State Lease - 4 Copies
Fee Lease - 3 Copies

☐ AMENDED REPORT

WELL LOCATION AND ACREAGE DEDICATION PLAT

*API Number 30-045-30998		*Pool Code 77310	*Pool Name GALLEGOS FRUITLAND SAND PICTURED CLIFFS, SOUTH
*Property Code 30471	*Property Name MEG		*Well Number 2
*GRID No. 004838	*Operator Name COLEMAN OIL & GAS, INC.		*Elevation 6024'

¹⁰ Surface Location

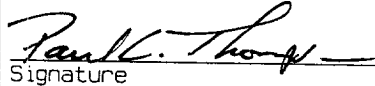
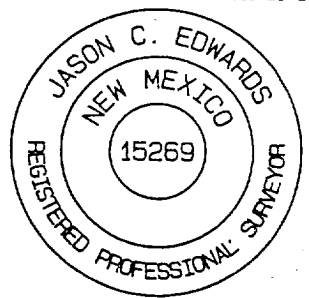
UL or lot no.	Section	Township	Range	Lot Idn	Feet from the	North/South line	Feet from the	East/West line	County
D	19	26N	11W		1185	NORTH	1190	WEST	SAN JUAN

¹¹ Bottom Hole Location If Different From Surface

UL or lot no.	Section	Township	Range	Lot Idn	Feet from the	North/South line	Feet from the	East/West line	County

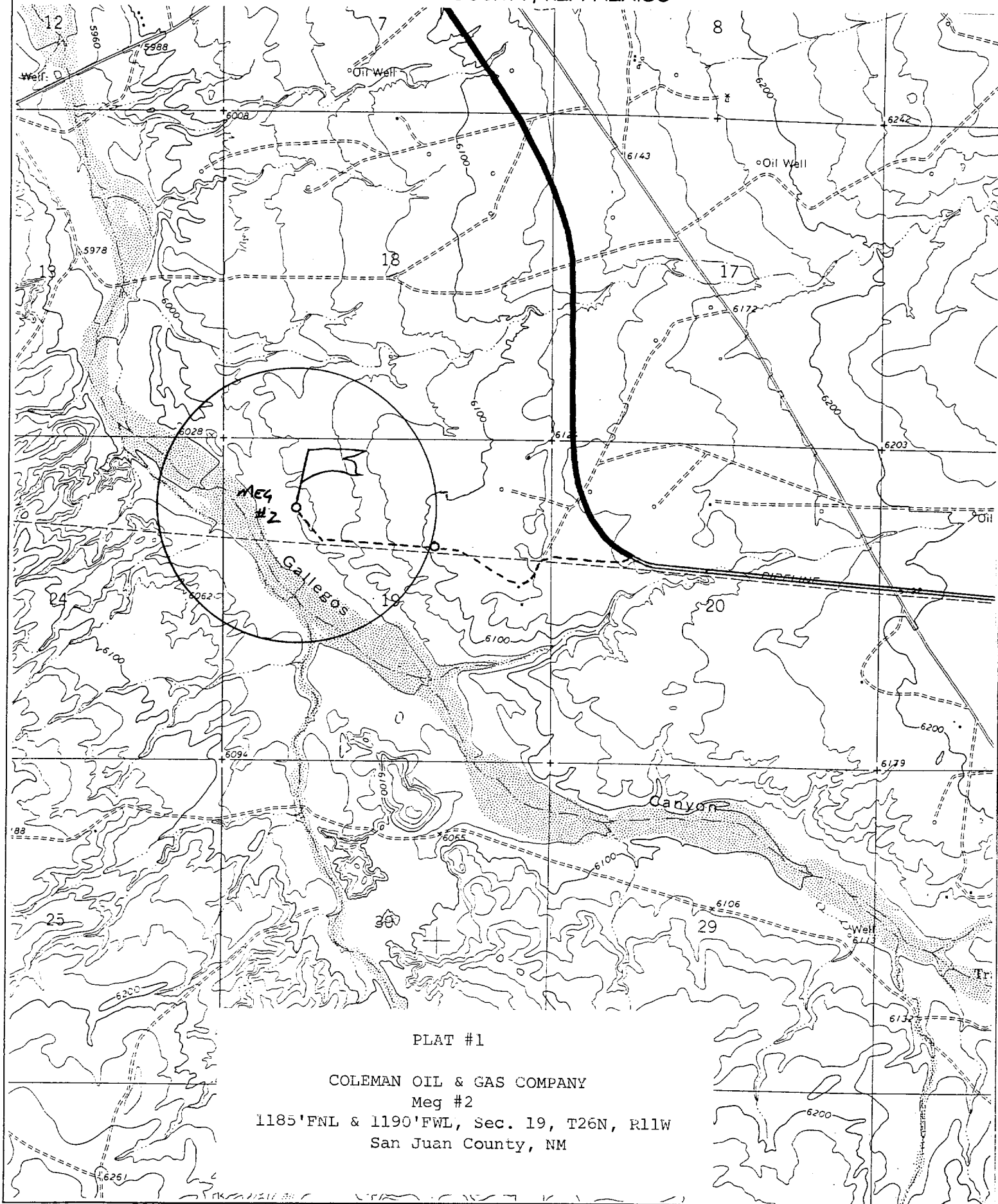
¹² Dedicated Acres 159.13 Acres - (NW/4)	¹³ Joint or Infill N	¹⁴ Consolidation Code	¹⁵ Order No.
---	---	----------------------------------	-------------------------

NO ALLOWABLE WILL BE ASSIGNED TO THIS COMPLETION UNTIL ALL INTERESTS HAVE BEEN CONSOLIDATED.
OR A NON-STANDARD UNIT HAS BEEN APPROVED BY THE DIVISION

¹⁶ 1306.80' 1321.32' 2642.64' LOT 1 1185' 1190' NO-G-0103-1466 LOT 2 5280.00' LOT 3 LOT 4 1314.06' 1327.92' 2623.50'	¹⁷ OPERATOR CERTIFICATION I hereby certify that the information contained herein is true and complete to the best of my knowledge and belief  Signature Paul C. Thompson Printed Name Agent Title 2/11/02 Date	¹⁸ SURVEYOR CERTIFICATION I hereby certify that the well location shown on this plat was plotted from field notes of actual surveys made by me or under my supervision, and that the same is true and correct to the best of my belief. Date of Survey: JULY 18, 2001 Signature and Seal of Professional Surveyor  JASON C. EDWARDS Certificate Number 15269
--	---	--

COLEMAN OIL & GAS INC. M^S #2

1185' FNL & 1190' FWL, SECTION 19, T26N, R11W, N.M.P.M.
SAN JUAN COUNTY, NEW MEXICO



PLAT #1

COLEMAN OIL & GAS COMPANY
Meg #2

1185' FNL & 1190' FWL, Sec. 19, T26N, R11W
San Juan County, NM

COLEMAN OIL AND GAS
OPERATIONS PLAN
Meg #2

I. Location: 1185' FNL & 1190' FWL Date: February 11, 2002
Sec 19 T26N R11W
San Juan County, NM

Field: S. Gallegos Pictured Cliffs Elev: GL 6024'
Surface: Navajo Tribal Trust
Minerals: NO-G-0103-1466

II. Geology: Surface formation _ Nacimiento

<u>Formation Tops</u>	<u>Depths</u>
Ojo Alamo	40'
Kirtland	160'
Fruitland	910'
Fruitland Coal	1170'
Pictured Cliffs	1185'
Total Depth	1335'

Estimated depths of anticipated water, oil, gas, and other mineral bearing formations which are expected to be encountered:

Water and gas - 1170 and 1185'.

B. Logging Program: IES and GR/Neutron at TD.

C. No over pressured zones are expected in this well. No H₂S zones will be penetrated in this well. Max. BHP = 500 psig.

III. Drilling

A. Contractor:

B. Mud Program:

The surface hole will be drilled with a fresh water mud.

The production hole will be drilled with a fresh water polymer mud. The weighting material will be drill solids or if conditions dictate, barite. The maximum mud weight expected is 8.5 ppg.

C. Minimum Blowout Control Specifications:

Double ram type or annular type 2000 psi working pressure BOP with a rotating head. See the attached exhibits (#1 through #3) for details on the BOP equipment. All ram type preventers and related equipment will be hydraulically tested at nipple-up and after any use under pressure to 1000 psi.

C. Cont.

The blind rams will be hydraulically activated and checked for operational readiness each time pipe is pulled out of the hole. All checks of the BOP stack and equipment will be noted on the daily drilling report. The BOP equipment will include a kelly cock, floor safety valve, and choke manifold all rated to 2000 psi.

IV. Materials

A. Casing Program:

Hole Size	Depth	Casing Size	Wt. & Grade
8-3/4"	120'	7"	20# J-55
6-1/4"	1335'	4-1/2"	10.5# J-55

B. Float Equipment:

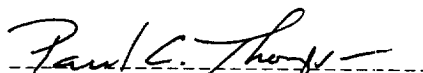
a) Surface Casing: None

b) Production Casing: 4-1/2" cement guide shoe and self fill insert float collar. Place float one joint above shoe. Five centralizers spaced every other joint above shoe and five turbolizers every other joint from the top of the well.

V. Cementing:

Surface casing: 7" - Use 30 sx (36 cu. ft.) of Cl "B" with 2% CaCl_2 and $\frac{1}{4}$ #/sk. celloflake. Yield = 1.18 cu. ft./sk; slurry weight = 15.6 PPG). 100% excess to circulate cement to surface. WOC 12 hours. Pressure test surface casing to 600 psi for 30 min.

Production Casing: 4-1/2" - Before cementing circulate hole with at least 1-1/2 hole volumes of mud. Precede cement with 30 bbls of fresh water. Lead with 110 sx (227 cu.ft) of Cl "B" with 2% metasilicate and $\frac{1}{4}$ #/sk. celloflake. (Yield = 2.06 cu.ft./sk; slurry weight = 12.5 PPG). Tail with 50 sx (59 cu.ft.) of Cl "B" with 2% CaCl_2 and $\frac{1}{4}$ #/sk. celloflake (Yield = 1.18 cu. ft./sk; slurry weight = 15.6 PPG). Total cement volume is 286 cu.ft. (100% excess to circulate cement to surface).


Paul C. Thompson, P.E.