

UNITED STATES
DEPARTMENT OF THE INTERIOR
BUREAU OF LAND MANAGEMENT

APPLICATION FOR PERMIT TO DRILL OR DEEPEN

1a. TYPE OF WORK

DRILL ☒

DEEPEN ☐

b. TYPE OF WELL

OIL ☐
WELL

GAS ☒
WELL

OTHER

SINGLE ☐
ZONE

MULTIPLE ☒
ZONE

2. NAME OF OPERATOR

~~Cross Timbers Operating Company~~

XTO Energy

3. ADDRESS AND TELEPHONE NO.

2700 Farmington Ave., Bldg. K, Ste 1 Farmington, NM 87401 MAY 2002

4. LOCATION OF WELL (Report location clearly and in accordance with any State requirements.)

At surface

2500' FSL & 660' FEL Sec 6, T27N, R08W

At proposed prod. zone

5. LEASE DESIGNATION AND SERIAL NO.

SF - 079319

6. IF INDIAN, ALLOTTEE OR TRIBE NAME

7. UNIT AGREEMENT NAME

8. FARM OR LEASE NAME, WELL NO.

Schwerdtfeger "A" #5F

9. API WELL NO.

30 045 31052

10. FIELD AND POOL, OR WILDCAT

Blanco Mesaverde

Basin Dakota

11. SEC., T., R., M., OR BLK.
AND SURVEY OR AREA

I Sec 6, T27N, R08W

12. COUNTY OR PARISH

San Juan

13. STATE

NM

14. DISTANCE IN MILES AND DIRECTION FROM NEAREST TOWN OR POST OFFICE*

Approx 24 air miles south down Largo Canyon from the Blanco NM Post Office

15. DISTANCE FROM PROPOSED*

LOCATION TO NEAREST
PROPERTY OR LEASE LINE, FT.

(Also to nearest drlg. unit line, if any) 660'

16. NO. OF ACRES IN LEASE

320.84

17. NO. OF ACRES ASSIGNED
TO THIS WELL

320.84 E/2

18. DISTANCE FROM PROPOSED LOCATION*

TO NEAREST WELL, DRILLING, COMPLETED,
OR APPLIED FOR, ON THIS LEASE, FT.

750'

19. PROPOSED DEPTH

7,325'

20. ROTARY OR CABLE TOOLS

0'-7,325' w/Rotary Tools

21. ELEVATIONS (Show whether DF, RT, GR, etc.)

6,429' GL

22. APPROX. DATE WORK WILL START*

Summer 2002

23.

PROPOSED CASING AND CEMENTING PROGRAM

SIZE OF HOLE	GRADE SIZE OF CASING	WEIGHT PER FOOT	SETTING DEPTH	QUANTITY OF CEMENT
12-1/4"	9-5/8", H-40	32.3#	265'	140 sx Class "B"
8-3/4"	7", J-55	20.0#	2,900'	255 sx Liteweight cement
6-1/4"	4-1/2", J-55	10.5#	7,325'	350 sx C1 "H"

XTO Energy Inc. plans to drill the above mentioned well as described in the enclosed Surface Use Program.

The pipeline ROW is also enclosed with this APD.

DRILLING OPERATIONS AUTHORIZED ARE
SUBJECT TO TERMS AND CONDITIONS WITH ATTACHED
"GENERAL REQUIREMENTS".

This action is subject to technical and
procedural review pursuant to 43 CFR 3165.3
and appeal pursuant to 43 CFR 3165.4

NOTE: THE "NOTICE OF STAKING" FOR THIS WELL WAS ORIGINALLY FILED AND ON-SITED AS THE SCHWERDTFEGER "A" #11B (MESAVERDE). XTO ENERGY HAS ELECTED TO ADD AN INFILL DAKOTA TO THE WELLBORE.

IN ABOVE SPACE DESCRIBE PROPOSED PROGRAM: If proposal is to deepen, give data on present productive zone and proposed new productive zone. If proposal is to drill or deepen directionally, give pertinent data on subsurface locations and measured and true vertical depths. Give blowout preventer program, if any.

24.

SIGNED

JWPatten

TITLE Drilling Engineer

DATE 4/02/02

(This space for Federal or State office use)

PERMIT NO.

APPROVAL DATE

Application approval does not warrant or certify that the applicant holds legal or equitable title to those rights in the subject lease which would entitle the applicant to conduct operations thereon.
CONDITIONS OF APPROVAL, IF ANY:

APPROVED BY

MBalera 2

TITLE

DATE

May 28

*See Instructions On Reverse Side

Title 18 U.S.C. Section 1001, makes it a crime for any person knowingly and willfully to make to any department or agency of the United States any false, fictitious or fraudulent statements or representations as to any matter within its jurisdiction.

NMCOO

DISTRICT I
1625 N. French Dr., Hobbs, N.M. 88240

DISTRICT II
811 South First, Artesia, N.M. 88210

DISTRICT III
1000 Rio Brazos Rd., Aztec, N.M. 87410

DISTRICT IV
2040 South Pacheco, Santa Fe, NM 87505

State of New Mexico
Energy, Minerals & Natural Resources Department

OIL CONSERVATION DIVISION

2040 South Pacheco
Santa Fe, NM 87505

Form C-102
Revised August 15, 2000

Submit to Appropriate District Office
State Lease - 4 Copies
Fee Lease - 3 Copies

☐ AMENDED REPORT

WELL LOCATION AND ACREAGE DEDICATION PLAT

¹ API Number 30-065-31052	² Pool Code 71599	³ Pool Name BASIN DAKOTA
⁴ Property Code 22634	⁵ Property Name SCHWERTFEGER "A"	⁶ Well Number 5F
⁷ GRID No. 167067	⁸ Operator Name XTO ENERGY INC.	⁹ Elevation 6429'

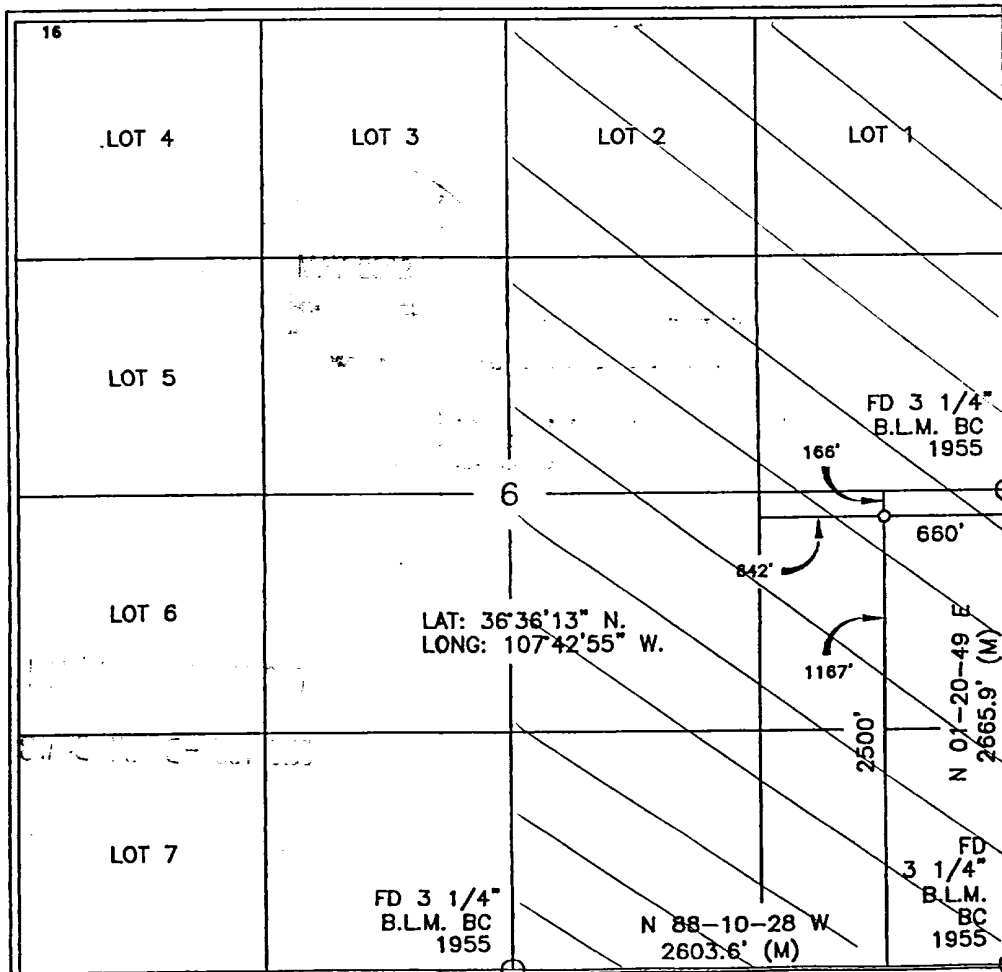
¹⁰ Surface Location

UL or lot no.	Section	Township	Range	Lot Idn	Feet from the	North/South line	Feet from the	East/West line	County
1	6	27-N	8-W		2500'	SOUTH	660'	EAST	SAN JUAN

¹¹ Bottom Hole Location If Different From Surface

UL or lot no.	Section	Township	Range	Lot Idn	Feet from the	North/South line	Feet from the	East/West line	County
¹² Dedicated Acres 320.84 $\frac{E}{2}$			¹³ Joint or Infill I		¹⁴ Consolidation Code		¹⁵ Order No.		

NO ALLOWABLE WILL BE ASSIGNED TO THIS COMPLETION UNTIL ALL INTERESTS HAVE BEEN CONSOLIDATED OR A NON-STANDARD UNIT HAS BEEN APPROVED BY THE DIVISION



17 OPERATOR CERTIFICATION

I hereby certify that the information contained herein is true and complete to the best of my knowledge and belief

Signature Jeffrey W. Patton
Printed Name JEFFREY W. PATTON
Title DRILLING ENGINEER
Date 4-3-02

18 SURVEYOR CERTIFICATION

I hereby certify that the well location shown on this plat was plotted from field notes of actual surveys made by me or under my supervision and that the same is true and correct to the best of my belief

Certificate Number 8894

DISTRICT I
1825 N. French Dr., Hobbs, N.M. 88240

DISTRICT II
811 South First, Artesia, N.M. 88210

DISTRICT III
1000 Rio Brazos Rd., Aztec, N.M. 87410

DISTRICT IV
2040 South Pacheco, Santa Fe, NM 87505

State of New Mexico
Energy, Minerals & Natural Resources Department

Form C-102
Revised August 15, 2000

Submit to Appropriate District Office
State Lease - 4 Copies
Fee Lease - 3 Copies

OIL CONSERVATION DIVISION

2040 South Pacheco
Santa Fe, NM 87505

☐ AMENDED REPORT

WELL LOCATION AND ACREAGE DEDICATION PLAT

¹ API Number 30045-31052	² Pool Code 72319	³ Pool Name BLANCO MESAUERDE
⁴ Property Code 22634	⁵ Property Name SCHWERTFEGER "A"	⁶ Well Number 5F
⁷ GRID No. 167067	⁸ Operator Name XTO ENERGY INC.	⁹ Elevation 6429'

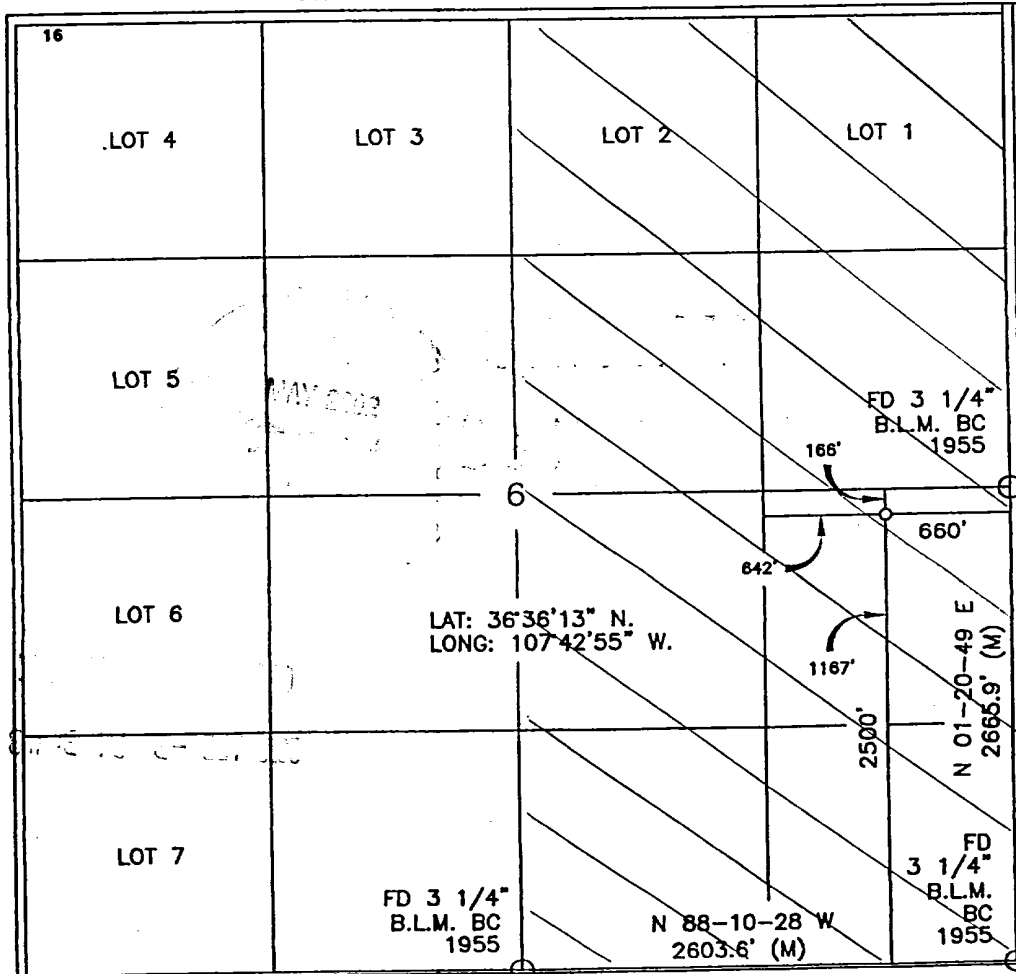
¹⁰ Surface Location

UL or lot no.	Section	Township	Range	Lot Idn	Feet from the	North/South line	Feet from the	East/West line	County
1	6	27-N	8-W		2500'	SOUTH	660'	EAST	SAN JUAN

¹¹ Bottom Hole Location If Different From Surface

UL or lot no.	Section	Township	Range	Lot Idn	Feet from the	North/South line	Feet from the	East/West line	County
¹² Dedicated Acres 320.84 E/2			¹³ Joint or Infill I		¹⁴ Consolidation Code		¹⁵ Order No.		

NO ALLOWABLE WILL BE ASSIGNED TO THIS COMPLETION UNTIL ALL INTERESTS HAVE BEEN CONSOLIDATED
OR A NON-STANDARD UNIT HAS BEEN APPROVED BY THE DIVISION



17 OPERATOR CERTIFICATION

I hereby certify that the information contained herein
is true and complete to the best of my knowledge and
belief

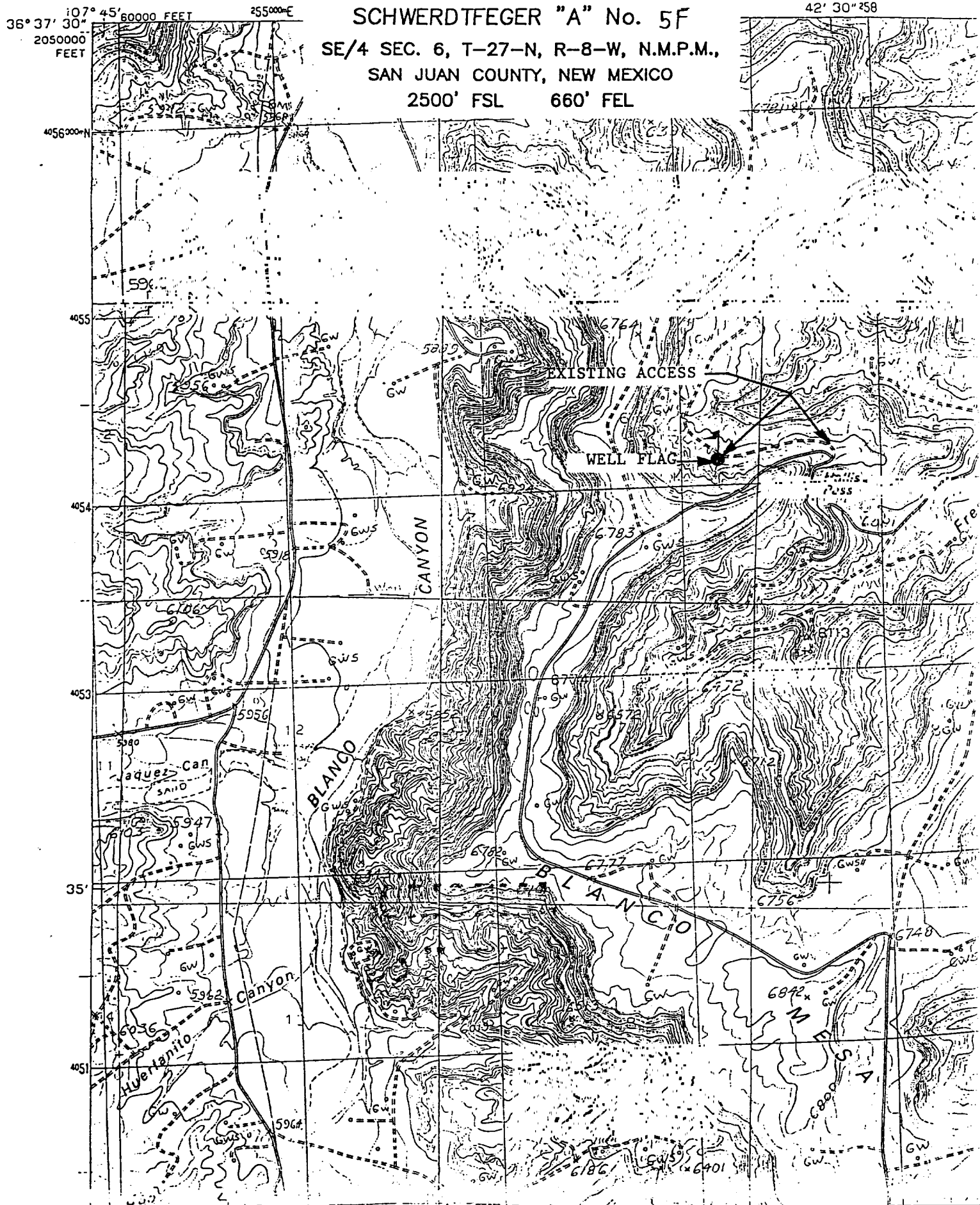
Signature Jeffrey W. Patton
Printed Name JEFFREY W. PATTON
Title DRILLING ENGINEER
Date 4-3-02

18 SURVEYOR CERTIFICATION

I hereby certify that the well location shown on this plat
was plotted from field notes of actual surveys made by
me or under my supervision and that the same is true
and correct to the best of my belief

Signature and Seal of Professional Surveyor:
8894
Certificate Number

42' 30" 258



XTO ENERGY INC.

Schwerdtfeger "A" #5F

APD Data

April 3, 2002

Surface Location: 2,500' FSL & 660' FEL, Sec 6, T27N, R08W County: San Juan State: New Mexico

PROJECTED TOTAL DEPTH: ±7,325

GR ELEV: 6,429'

OBJECTIVE: Dakota/Mesaverde

Est KB ELEV: 6,442' (13' AGL)

1. MUD PROGRAM:

INTERVAL	0' to 265'	265' to 2,900'	2,900' to TD
HOLE SIZE	12-1/4"	8-3/4"	6-1/4"
MUD TYPE	FW/Native Mud	FW/Polymer	Air/Foam
WEIGHT	8.6-8.8	8.6-9.0	
VISCOSITY	28-32	29-34	
WATER LOSS	NC	NC	

Remarks: Use fibrous materials as needed to control seepage and lost circulation. Pump high viscosity sweeps as needed for hole cleaning. RU air compressors after setting the intermediate csg. Drill with air or foam to TD.

2. CASING PROGRAM:

Surface Casing: 9-5/8" casing to be set at ± 265' in 8.6 ppg mud

Interval	Length	Wt	Gr	Cplg	Coll Rating (psi)	Burst Rating (psi)	Jt Str (M-lbs)	ID (in)	Drift (in)	SF Coll	SF Burst	SF Ten
0'-265'	265'	32.3#	H-40	STC	1370	2270	254	9.001	8.972	5.98	5.68	15.73

Intermediate Casing: 7" casing to be set at ±2,900' in 9.0 ppg mud.

Interval	Length	Wt	Gr	Cplg	Coll Rating (psi)	Burst Rating (psi)	Jt Str (M-lbs)	ID (in)	Drift (in)	SF Coll	SF Burst	SF Ten
0'-2,900'	2900'	20.0#	J-55	STC	2257	3740	234	6.456	6.331	1.15	1.31	2.57

Production Casing: 4-1/2" casing to be set at 7,325 in air.

Interval	Length	Wt	Gr	Cplg	Coll Rating (psi)	Burst Rating (psi)	Jt Str (M-lbs)	ID (in)	Drift (in)	SF Coll	SF Burst	SF Ten
0'-7,325'	7,325'	10.5#	J-55	STC	4010	4790	132	4.052	3.927	1.33	1.20	1.90

3. **WELLHEAD:**

- A. Bradenhead: 9-5/8" x 7" 2,000 psig WP (4,000 psig test).
Casinghead: 7" x 4-1/2" 3,000 psig WP (6,000 psig test).

4. **CEMENT PROGRAM (Slurry design may change slightly, but the plan is to circulate cement to surface on both casing strings):**

- A. Surface: 9-5/8", 32.3#, H-40, STC casing to be set at $\pm 265'$.

Lead: 140 sx of Class "B" (Standard) cement containing 2% CaCl_2 , 1/4 pps celloflake, mixed at 15.6 ppg, 1.18 ft^3/sk , & 5.20 gal wtr/sk.

Total slurry volume is 166 ft^3 , 100% excess of calculated annular volume to 265'.

- B. Intermediate: 7", 20.0#, J-55, STC casing to be set at $\pm 2,900'$.

Lead: 205 sx of Class "B" (Standard) cement containing $\pm 3\%$ extender, 1/4 pps celloflake and 2% CaCl_2 mixed at 11.4 ppg, 2.88 ft^3/sk , 17.89 gal wtr/sx.

Tail: 50 sx of Class "B" (Standard) cement containing 1/4 pps celloflake and 2% CaCl_2 mixed at 15.6 ppg, 1.18 ft^3/sk , 5.20 gal wtr/sx.

Total slurry volume is 650 ft^3 , circulated to surface. This value is 50% (excess) over gage hole volume.

- C: Production: 4-1/2", 10.5#, J-55, STC casing to be set at $\pm 7,325'$.

Lead: 200 sx of Class "H" Premium Lite High Strength (65/35/6), 1/4 pps celloflake, 2% KCl, 0.5% fluidloss, 0.2% dispersant & 2% Phenoseal mixed at 12.5 ppg, 2.01 ft^3/sk , 10.12 gal wtr/sx.

Tail: 150 sx of Class "H" Premium cement containing 4% gel (extender), 1/4 pps celloflake, 0.5% fluidloss, 0.2% dispersant and 2% Phenoseal mixed at 14.7 ppg, 1.38 ft^3/sk , 6.70 gal wtr/sx..

Total estimated slurry volume for the 4-1/2" production casing is 609 ft^3 for 4,625' of fill. Est. TOC should be @ 2,700'. 35% (excess) over gage hole volume has been added to the number of sacks indicated..

Note: The slurry design may change slightly based upon actual conditions. Final cement volumes will be determined for the caliper logs plus 35%..

5. **LOGGING PROGRAM:**

- A. Mud Logger: There are no plans to use a mud logger at this time.

- B. Open Hole Logs as follows: Run Dual Induction/MSFL/GR/CAL/SP/CNL/LDT (lithodensity) from TD to the bottom of the intermediate csg (@ $\pm 2,900'$ MD). Run cased hole GR/CCL from TD to surface.

BOP SCHEMATIC FOR DRILLING OPERATIONS CLASS 1 (2M) NORMAL PRESSURE

TESTING PROCEDURE

1. Test BOP after installation:
Pressure test BOP to 200-300 psig (low pressure) for 5 min.
Test BOP to Working Press or to 70% internal yield of surf csg (10 min).
2. Test operation of (both) rams on every trip.
3. Check and record Accumulator pressure on every tour.
4. Re-pressure test BOP stack after changing out rams.
5. Have kelly cock valve with handle available.
6. Have safety valve and subs to fit all sizes of drill string.

