

District I  
1625 N. French Dr., Hobbs, NM 88240  
District II  
1301 W. Grand Avenue, Artesia, NM 88210  
District III  
1000 Rio Brazos Road, Aztec, NM 87410  
District IV  
1220 S. St. Francis Dr., Santa Fe, NM 87505

State of New Mexico  
Energy Minerals and Natural Resources

Oil Conservation Division  
1220 South St. Francis Dr.  
Santa Fe, NM 87505

Form C-101  
Revised March 17, 1999

Submit to appropriate District Office  
State Lease - 6 Copies  
Fee Lease - 5 Copies

☐ AMENDED REPORT

**APPLICATION FOR PERMIT TO DRILL, RE-ENTER, DEEPEN, PLUGBACK, OR ADD A ZONE**

<sup>1</sup> Operator Name and Address TEXAKOMA OIL AND GAS CORPORATION 5400 LBJ FREEWAY, SUITE 500 DALLAS, TEXAS 75240		<sup>2</sup> OGRID Number 022521	
<sup>3</sup> Property Code 29710		<sup>3</sup> API Number 30-045-31077	
<sup>5</sup> Property Name BLACKHILLS 16		<sup>6</sup> Well No. 1	

**7 Surface Location**

UL or lot no.	Section	Township	Range	Lot Idn	Feet from the	North/South line	Feet from the	East/West line	County
P	16	26 N	13 W		772	SOUTH	701	EAST	SAN JUAN

**8 Proposed Bottom Hole Location If Different From Surface**

UL or lot no.	Section	Township	Range	Lot Idn	Feet from the	North/South line	Feet from the	East/West line	County
<sup>9</sup> Proposed Pool 1 BASIN FRUITLAND COAL (71629)					<sup>10</sup> Proposed Pool 2				

<sup>11</sup> Work Type Code N	<sup>12</sup> Well Type Code G	<sup>13</sup> Cable/Rotary R	<sup>14</sup> Lease Type Code S	<sup>15</sup> Ground Level Elevation 6200 6180
<sup>16</sup> Multiple NO	<sup>17</sup> Proposed Depth 2000'	<sup>18</sup> Formation FRUITLAND COAL	<sup>19</sup> Contractor L & B SPEED DRILL	<sup>20</sup> Spud Date SPRING 2002

**21 Proposed Casing and Cement Program**

Hole Size	Casing Size	Casing weight/foot	Setting Depth	Sacks of Cement	Estimated TOC
8 3/4"	7.00"	20	150'	42 SKS, 50 CF	SURFACE
6 1/4"	4 1/2"	10.5	2000'	245 SKS, 435 CF	SURFACE

<sup>22</sup> Describe the proposed program. If this application is to DEEPEN or PLUG BACK, give the data on the present productive zone and proposed new productive zone. Describe the blowout prevention program, if any. Use additional sheets if necessary.

AN ANNULAR BOP RATED TO 2000 PSIG WILL BE FURNISHED BY THE CONTRACTOR AND TESTED TO 500 PSIG BEFORE DRILLING BELOW SURFACE CASING. THE WELL WILL BE LOGGED AND THE PRODUCTION CASING CEMENTED TO SURFACE. THE POTENTIALLY PRODUCTIVE FRUITLAND COAL INTERVAL(S) WILL BE PERFORATED AND STIMULATED.

<sup>23</sup> I hereby certify that the information given above is true and complete to the best of my knowledge and belief.		OIL CONSERVATION DIVISION	
Signature: <i>Tom Sprinkle</i>	X	Approved by: <i>[Signature]</i>	
Printed name: TOM SPRINKLE		Title: <i>PROPERTY &amp; GAS INSPECTOR</i>	
Title: DRILLING MANAGER		Approval Date: APR 2, 2002	Expiration Date: APR 2, 2003
Date: April 26, 2002	Phone: 972-701-9106	Conditions of Approval:	
		Attached <input type="checkbox"/> HOLDING FOR NSL	

State of New Mexico  
Energy, Minerals & Mining Resources Department  
OIL CONSERVATION DIVISION  
2040 South Pacheco  
Santa Fe, NM 87505

Form C - 102

☐ AMENDED REPORT

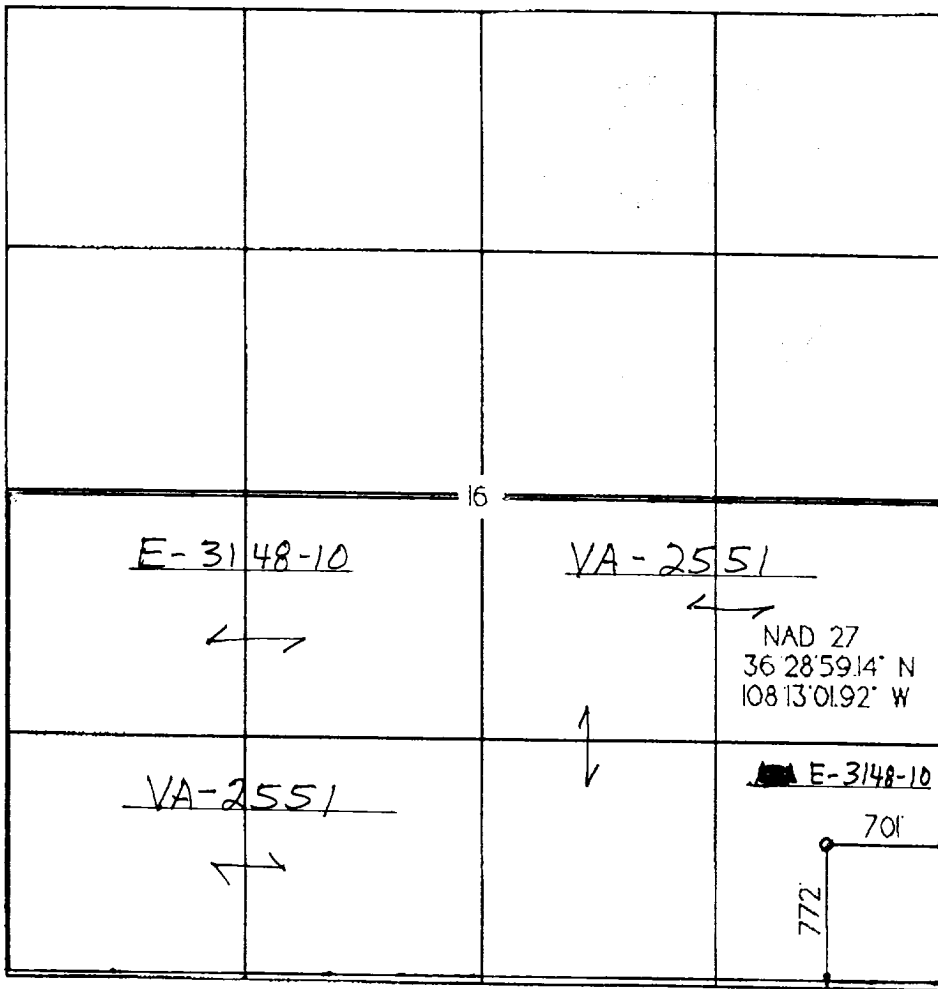
WELL LOCATION AND ACREAGE DEDICATION PLAT

APA Number <b>30045-31077</b>	Pool Code <b>71629</b>	Pool Name <b>Basin Fruitland Coal</b>
Property Code <b>29710</b>	Property Name <b>TEXAKOMA BLACKHILLS</b>	Well Number <b>1</b>
OGRID No. <b>022521</b>	Operator Name <b>TEXAKOMA OIL &amp; GAS CORPORATION</b>	Elevation <b>6180'</b>

Surface Location									
UL or Lot <b>P</b>	Sec. <b>16</b>	Twp. <b>26 N.</b>	Rge. <b>13 W.</b>	Lot Id.	Feet from <b>772'</b>	North/South <b>SOUTH</b>	Feet from <b>70'</b>	East/West <b>EAST</b>	County <b>SAN JUAN</b>

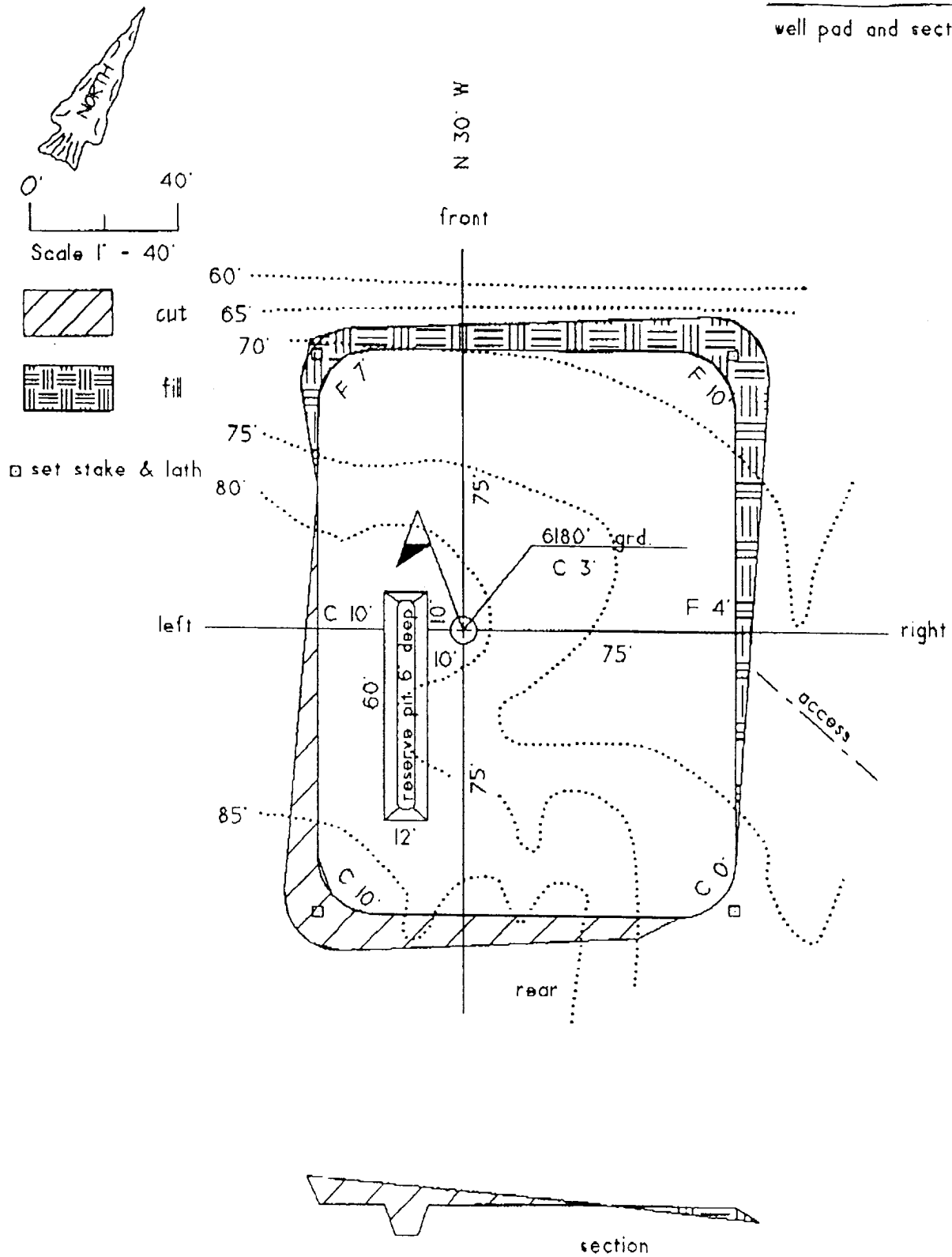
Bottom Hole Location If Different From Surface									
UL or Lot	Sec.	Twp.	Rge.	Lot Id.	Feet from	North/South	Feet from	East/West	County
Dedication <b>S/320</b>	Joint? <b>N</b>	Consolidation		Order No.					

NO ALLOWABLE WELL ASSIGNED TO THIS COMPLETION UNTIL ALL INTERESTS HAVE BEEN CONSOLIDATED  
OR A NON-STANDARD UNIT HAS BEEN APPROVED BY THE DIVISION



<p><b>OPERATOR CERTIFICATION</b></p> <p>I hereby certify that the information contained herein is true and complete to the best of my knowledge and belief.</p> <p>Signature <i>Tom Sprinkle</i></p> <p>Printed Name <b>TOM SPRINKLE</b></p> <p>Title <b>DRILLING MANAGER</b></p> <p>Date <b>4-26-2002</b></p>
<p><b>SURVEYOR CERTIFICATION</b></p> <p>I hereby certify that the well location on this plat was plotted from field notes of actual surveys made by me or under my supervision, and that the same is true and correct to the best of my belief.</p> <p>Date of Survey <b>APR 11 2002</b></p> <p>Signature <i>James R. Heston</i></p> <p>Professional Surveyor <b>6844</b></p> <p>REGISTERED LAND SURVEYOR</p>

Blackhills 16 # 1  
well pad and section



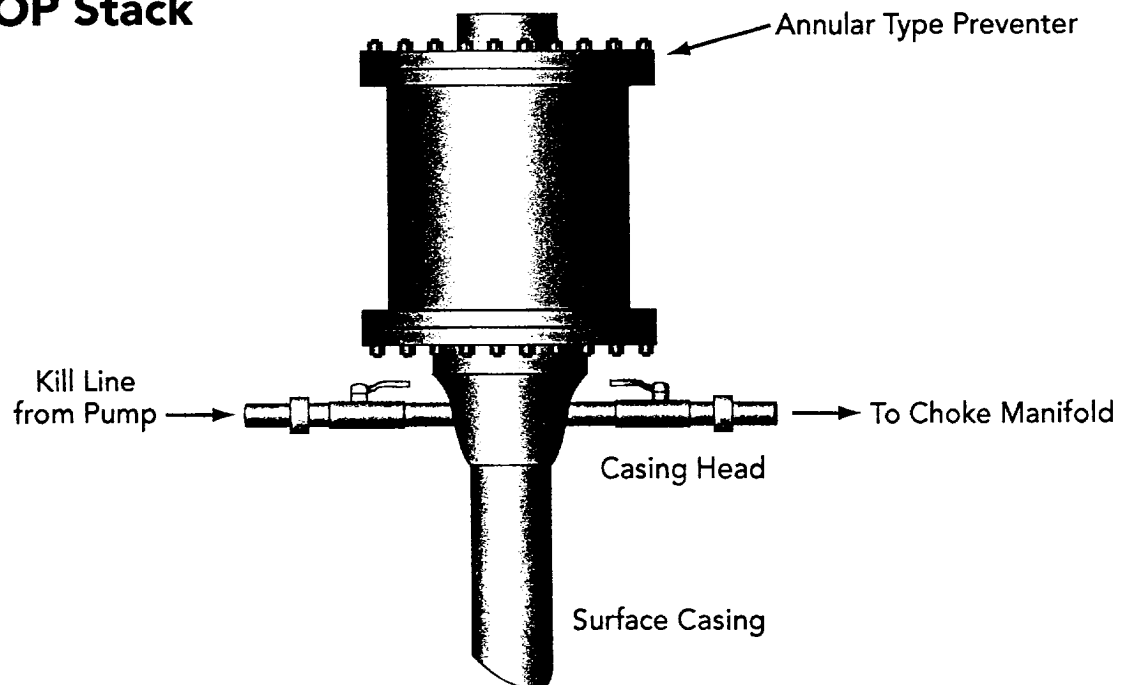


## ***Well Control Equipment Schematic for 2M Service***

### **Texakoma Black Hills #16-1 Well**

Location: Section 16, T26N, R13W  
San Juan County, New Mexico

#### **BOP Stack**



#### **Choke & Kill Manifold**

