

UNITED STATES  
DEPARTMENT OF THE INTERIOR  
BUREAU OF LAND MANAGEMENT

## APPLICATION FOR PERMIT TO DRILL OR DEEPEN

1a. TYPE OF WORK

DRILL ☒DEEPEEN ☐

b. TYPE OF WELL

OIL  
WELL ☐GAS  
WELL ☒

OTHER

SINGLE  
ZONE ☐MULTIPLE  
ZONE ☒

2. NAME OF OPERATOR

~~Cross Timbers Operating Company~~ XTO

3. ADDRESS AND TELEPHONE NO.

2700 Farmington Ave., Bldg. K. Ste 1 Farmington, NM 87401

4. LOCATION OF WELL (Report location clearly and in accordance with any State requirements.)

At surface

925' FSL &amp; 1920' FEL Sec 8, T27N, R08W

At proposed prod. zone

same

14. DISTANCE IN MILES AND DIRECTION FROM NEAREST TOWN OR POST OFFICE\*

Approx 24 air miles south down Largo Canyon from the Blanco NM Post Office

15. DISTANCE FROM PROPOSED\*

LOCATION TO NEAREST

PROPERTY OR LEASE LINE, FT.

(Also to nearest drlg. unit line, if any) 663' MV / 663' CH

16. NO. OF ACRES IN LEASE

320 MV / 160 CH

17. NO. OF ACRES ASSIGNED  
TO THIS WELL

E 320 MV / 160 CH SE 1/4

18. DISTANCE FROM PROPOSED LOCATION\*

TO NEAREST WELL, DRILLING, COMPLETED,  
OR APPLIED FOR, ON THIS LEASE, FT.

85'

19. PROPOSED DEPTH

5,600'

20. ROTARY OR CABLE TOOLS

0'-5,600' w/Rotary Tools

21. ELEVATIONS (Show whether DF, RT, GR, etc.)

6,720' GL

22. APPROX. DATE WORK WILL START\*

Summer 2002

23.

## PROPOSED CASING AND CEMENTING PROGRAM

SIZE OF HOLE	GRADE SIZE OF CASING	WEIGHT PER FOOT	SETTING DEPTH	QUANTITY OF CEMENT
12-1/4"	8-5/8", J-55	24#	320'	200 sx Type III
7-7/8"	4-1/2", J-55	10.5#	5,600'	810 sx Premium Lite cement

This action is subject to technical and  
procedural review pursuant to 43 CFR 3165.3  
and appeal pursuant to 43 CFR 3165.4DRILLING OPERATIONS AUTHORIZED ARE  
SUBJECT TO COMPLIANCE WITH ATTACHED  
"GENERAL REQUIREMENTS".XTO Energy Inc. plans to drill the above mentioned well as described in the enclosed Surface Use  
Program.

Please note that this application also includes the El Paso pipeline plat for ROW.

IN ABOVE SPACE DESCRIBE PROPOSED PROGRAM: If proposal is to deepen, give data on present productive zone and proposed new productive zone. If proposal is to drill or  
deepen directionally, give pertinent data on subsurface locations and measured and true vertical depths. Give blowout preventer program, if any.

24.

SIGNED

TITLE Drilling EngineerDATE 5/8/02

(This space for Federal or State office use)

PERMIT NO. \_\_\_\_\_

APPROVAL DATE \_\_\_\_\_

Application approval does not warrant or certify that the applicant holds legal or equitable title to those rights in the subject lease which would entitle the applicant to conduct operations thereon.

CONDITIONS OF APPROVAL, IF ANY:

APPROVED BY

/s/ Charlie Beecum

TITLE

ACTING

DATE

AUG 14

\*See Instructions On Reverse Side

Title 18 U.S.C. Section 1001, makes it a crime for any person knowingly and willfully to make to any department or agency of the United States any false,  
fictitious or fraudulent statements or representations as to any matter within its jurisdiction.

DISTRICT I  
1825 N. French Dr., Hobbs, N.M. 88240

DISTRICT II  
811 South First, Artesia, N.M. 88210

DISTRICT III  
1000 Rio Brazos Rd., Aztec, N.M. 87410

DISTRICT IV  
2040 South Pacheco, Santa Fe, NM 87505

State of New Mexico  
Energy, Minerals & Natural Resources Department

Form C-102  
Revised August 15, 2000

Submit to Appropriate District Office  
State Lease - 4 Copies  
Fee Lease - 3 Copies

OIL CONSERVATION DIVISION

2040 South Pacheco  
Santa Fe, NM 87505

☐ AMENDED REPORT

WELL LOCATION AND ACREAGE DEDICATION PLAT

<sup>1</sup> API Number 30-045-31094	<sup>2</sup> Pool Code 72319	<sup>3</sup> Pool Name BLWCO. MESAVERDE
<sup>4</sup> Property Code 22634	<sup>5</sup> Property Name SCHWERTFEGER A	<sup>6</sup> Well Number 13B
<sup>7</sup> OGRID No. 167067	<sup>8</sup> Operator Name XTO ENERGY INC.	<sup>9</sup> Elevation 6720'

<sup>10</sup> Surface Location

UL or lot no. 0	Section 8	Township 27-N	Range 8-W	Lot Idn	Feet from the 925	North/South line SOUTH	Feet from the 1920	East/West line EAST	County SAN JUAN
--------------------	--------------	------------------	--------------	---------	----------------------	---------------------------	-----------------------	------------------------	--------------------

<sup>11</sup> Bottom Hole Location If Different From Surface

UL or lot no.	Section	Township	Range	Lot Idn	Feet from the	North/South line	Feet from the	East/West line	County
<sup>12</sup> Dedicated Acres 320	E/2				<sup>13</sup> Joint or Infill I	<sup>14</sup> Consolidation Code	<sup>15</sup> Order No.		

NO ALLOWABLE WILL BE ASSIGNED TO THIS COMPLETION UNTIL ALL INTERESTS HAVE BEEN CONSOLIDATED  
OR A NON-STANDARD UNIT HAS BEEN APPROVED BY THE DIVISION

16

SEC. CORNER  
FD 2 1/2" BC  
BLM 1955

8

5332.4'  
N 01-15-28 E

LAT: 36°35'04" N  
LONG: 107°42'08" W

683' 408' 828' 1920'

925'

2582.9'

SEC. CORNER  
FD 2 1/2" BC  
BLM 1955

QTR. CORNER  
FD 2 1/2" BC  
BLM 1955

17 OPERATOR CERTIFICATION

I hereby certify that the information contained herein  
is true and complete to the best of my knowledge and  
belief.

Signature

JEFFREY W PATTON

Printed Name

DRILLING ENGINEER

Title

5-7-02

Date

18 SURVEYOR CERTIFICATION

I hereby certify that the well location shown on this plat  
was plotted from field notes of actual surveys made by  
me or under my supervision, and that the same is true  
and correct to the best of my belief.

Date of Survey

Signature and Seal of Professional Surveyor

8894

Certificate Number

DISTRICT I  
1825 N. Franch Dr., Hobbs, N.M. 88240

DISTRICT II  
811 South First, Artesia, N.M. 88210

DISTRICT III  
1000 Rio Brazos Rd., Aztec, N.M. 87410

DISTRICT IV  
2040 South Pacheco, Santa Fe, NM 87505

State of New Mexico  
Energy, Minerals & Natural Resources Department

Form C-102  
Revised August 15, 2000

OIL CONSERVATION DIVISION

2040 South Pacheco  
Santa Fe, NM 87505

Submit to Appropriate District Office  
State Lease - 4 Copies  
Fee Lease - 3 Copies

☐ AMENDED REPORT

WELL LOCATION AND ACREAGE DEDICATION PLAT

<sup>1</sup> API Number 30-045-31094	<sup>2</sup> Pool Code 82329	<sup>3</sup> Pool Name OTERO CHACRA
<sup>4</sup> Property Code 22634	<sup>5</sup> Property Name SCHWERTFEGER A	<sup>6</sup> Well Number 13B
<sup>7</sup> GRID No. 167067	<sup>8</sup> Operator Name XTO ENERGY INC.	<sup>9</sup> Elevation 6720'

<sup>10</sup> Surface Location

UL or lot no.	Section	Township	Range	Lot Idn	Feet from the	North/South line	Feet from the	East/West line	County
0	8	27-N	8-W		925	SOUTH	1920	EAST	SAN JUAN

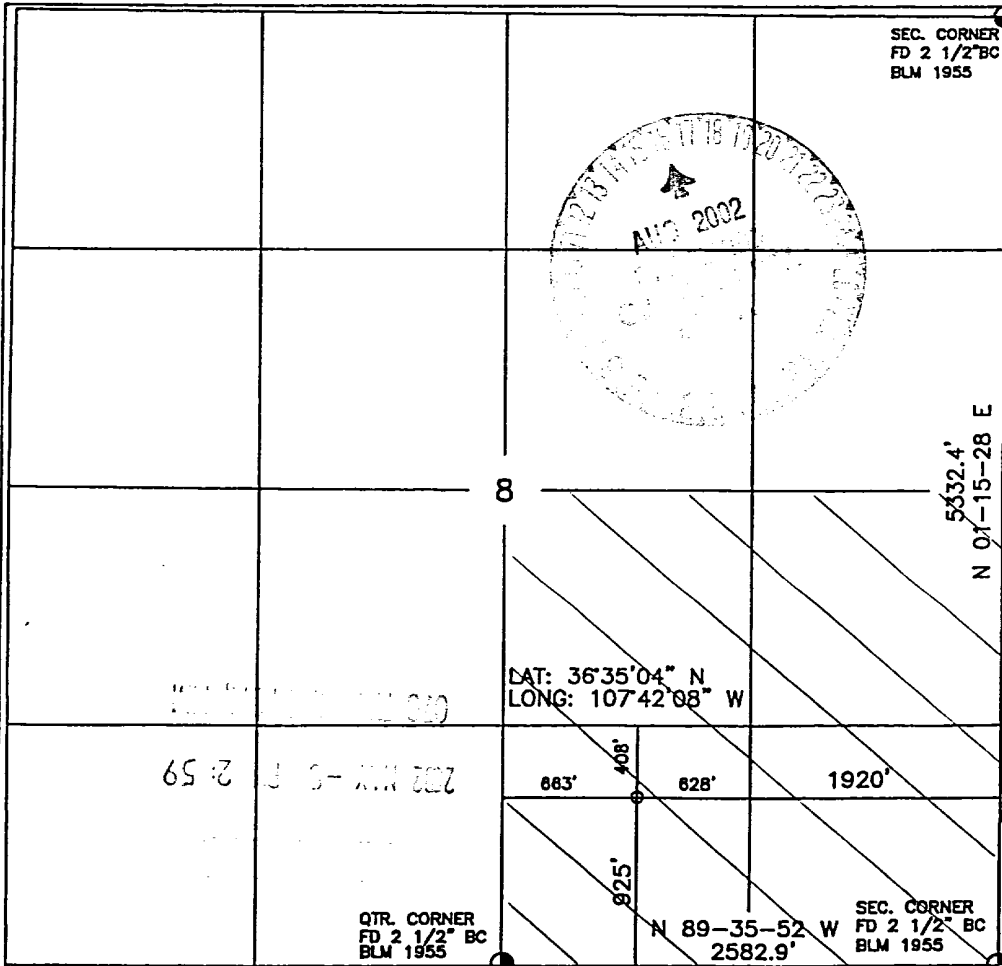
<sup>11</sup> Bottom Hole Location If Different From Surface

UL or lot no.	Section	Township	Range	Lot Idn	Feet from the	North/South line	Feet from the	East/West line	County

<sup>12</sup> Dedicated Acres 160 SE/A	<sup>13</sup> Joint or Infill	<sup>14</sup> Consolidation Code	<sup>15</sup> Order No.
---	-------------------------------	----------------------------------	-------------------------

NO ALLOWABLE WILL BE ASSIGNED TO THIS COMPLETION UNTIL ALL INTERESTS HAVE BEEN CONSOLIDATED  
OR A NON-STANDARD UNIT HAS BEEN APPROVED BY THE DIVISION

16



17 OPERATOR CERTIFICATION

I hereby certify that the information contained herein  
is true and complete to the best of my knowledge and  
belief.

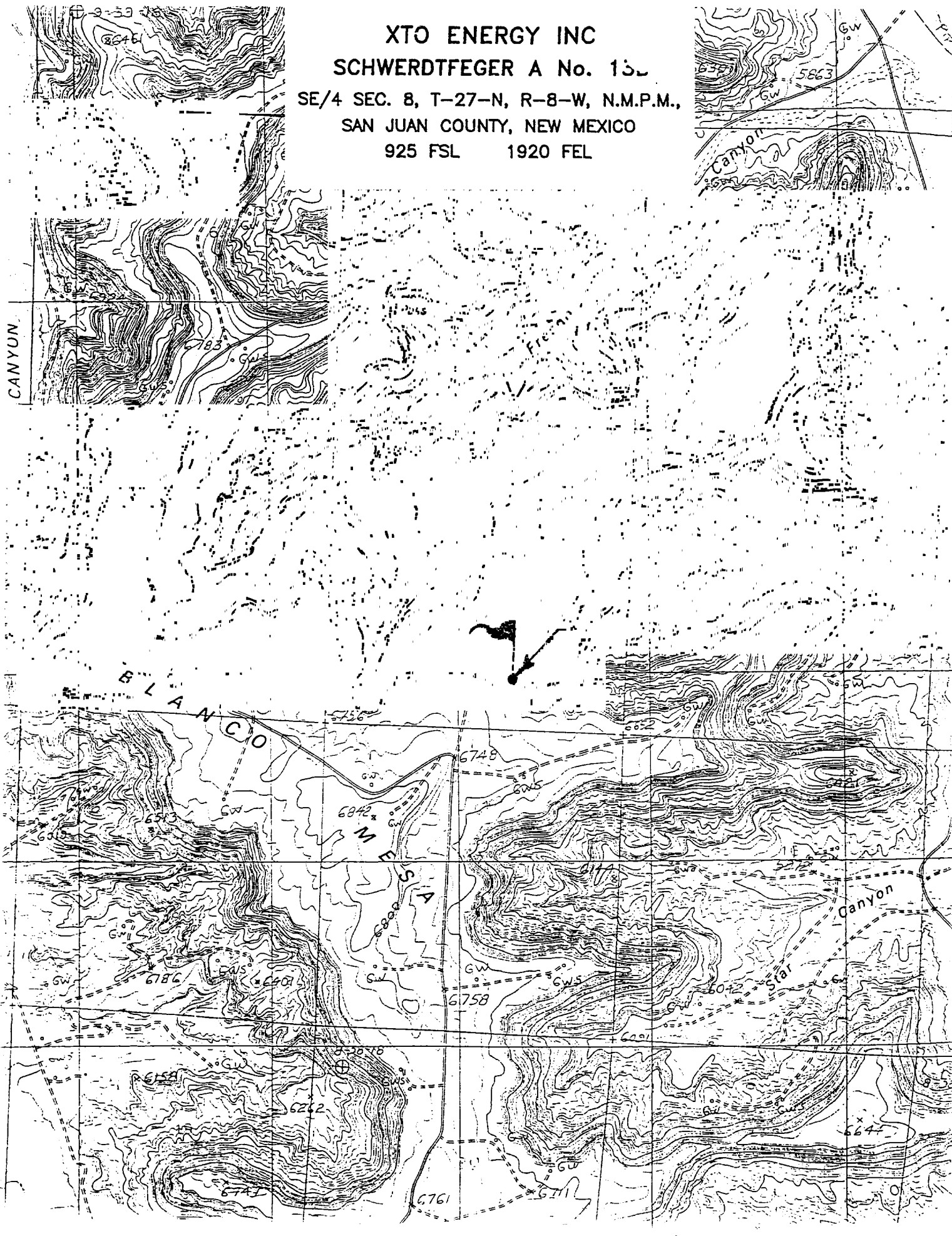
Signature Jeffrey W. Patton  
Printed Name JEFFREY W. PATTON  
Title DRILLING ENGINEER  
Date 5-7-02

18 SURVEYOR CERTIFICATION

I hereby certify that the well location shown on this plat  
was plotted from field notes of actual surveys made by  
me or under my supervision, and that the same is true  
and correct to the best of my belief.

Date of Survey 10-18-01  
Signature and Seal of Professional Surveyor [Signature]  
Certificate Number 8894

XTO ENERGY INC  
SCHWERTDFEGER A No. 13  
SE/4 SEC. 8, T-27-N, R-8-W, N.M.P.M.,  
SAN JUAN COUNTY, NEW MEXICO  
925 FSL 1920 FEL



# XTO ENERGY INC.

Schwerdtfeger "A" #13B

APD Data

May 6, 2002

Location: 925' FSL & 1920' FEL, Sec 8, T27N, R08W

County: San Juan

State: New Mexico

PROJECTED TOTAL DEPTH: ±5,600'

GR ELEV: 6,720'

OBJECTIVE: Mesaverde/Chacra

Est KB ELEV: 6,732' (12' AGL)

## 1. MUD PROGRAM:

INTERVAL	0' to 270'	270' to 3,500'	3,500' to TD
HOLE SIZE	12-1/4"	7-7/8"	7-7/8"
MUD TYPE	FW/Spud Mud	FW/Polymer	LSND
WEIGHT	8.6-9.0	8.4-8.8	8.6-9.0
VISCOSITY	28-32	28-32	45-60
WATER LOSS	NC	NC	8-10

Remarks: Use fibrous materials as needed to control seepage and lost circulation. Pre-treat with 20% LCM @ 3,500'. Pump high viscosity sweeps as needed for hole cleaning. Raise viscosity (>85 sec) at TD for logging. Reduce viscosity after logging for cementing purposes.

## 2. CASING PROGRAM:

Surface Casing: 8-5/8" casing to be set at ± 320' in 8.8 ppg mud

Interval	Length	Wt	Gr	Cplg	Coll Rating (psi)	Burst Rating (psi)	Jt Str (M-lbs)	ID (in)	Drift (in)	SF Coll	SF Burst	SF Ten
0'-320'	320'	24#	J-55	STC	1370	2950	244	8.097	7.972	7.32	7.95	29.39

Production Casing: 4-1/2" casing to be set at TD in 9.0 ppg mud.

Interval	Length	Wt	Gr	Cplg	Coll Rating (psi)	Burst Rating (psi)	Jt Str (M-lbs)	ID (in)	Drift (in)	SF Coll	SF Burst	SF Ten
0'-TD	5,600'	10.5#	J-55	STC	4010	4790	132	4.052	3.875	1.66	1.33	2.44

## 3. WELLHEAD:

- Casing Head: Larkin Fig 92 (or equivalent), 9" nominal, 2,000 psig WP (4,000 psig test) with 8-5/8" 8rnd thread on bottom and 11-3/4" 8rnd thread on top.
- Tubing Head: Larkin Fig 612 (or equivalent), 6.456" nominal, 2,000 psig WP (4,000 psig test), 4-1/2" 8rnd female thread on bottom, 8-5/8" 8rnd thread on top.

**4. CEMENT PROGRAM (Slurry design may change slightly, but the plan is to circulate cement to surface on both casing strings):**

A. Surface: 8-5/8", 24#, J-55, STC casing to be set at  $\pm 320'$ .

Lead: 200 sx of "Type III" cement containing 3%  $\text{CaCl}_2$ , ¼ pps celloflake, mixed at 14.5 ppg, 1.39 ft<sup>3</sup>/sk, & 6.50 gal wtr/sk.

*Total slurry volume is 278 ft<sup>3</sup>,  $\pm 100\%$  excess of calculated annular volume to 320'.*

B. Production: 4-1/2", 10.5#, J-55, STC casing to be set at  $\pm 5,600'$ . DV Tool to be set @  $\pm 4,000'$ .

**First Stage**

Lead: 80 sx of Premium Lite FM (65/35/6) cement containing 2% KCl, ¼ pps celloflake, 2-4% Phenoseal mixed at 11.9 ppg, 2.39 ft<sup>3</sup>/sk, 15.60 gal wtr/sx.

Tail: 175 sx of Premium Lite HS (65/35/6) cement containing 2% KCl, 7#/sx CSE, ¼ pps celloflake, 0.5% Fluid loss, 0.2% Dispersant mixed at 12.5 ppg, 2.01 ft<sup>3</sup>/sk, 10.71 gal wtr/sx..

**Second Stage**

Lead: 475 sx of Premium Lite FM (65/35/6) cement containing 2% KCl, ¼ pps celloflake, 2-4% Phenoseal mixed at 11.9 ppg, 2.39 ft<sup>3</sup>/sk, 15.60 gal wtr/sx.

Tail: 80 sx of Premium Lite HS (65/35/6) cement containing 2% KCl, 7#/sx CSE, ¼ pps celloflake, 0.5% Fluid loss, 0.2% Dispersant mixed at 12.5 ppg, 2.01 ft<sup>3</sup>/sk, 10.71 gal wtr/sx..

*Total estimated slurry volume (including 40% excess) for the 4-1/2" production casing is 1,779 ft<sup>3</sup>.*

*Note: The slurry design may change slightly based upon actual conditions. Final cement volumes will be determined for the caliper logs plus 40%. It will be attempted to circ cement to surface on both stages.*

**5. LOGGING PROGRAM:**

A. Mud Logger: There are no plans to use a mud logger at this time.

B. Open Hole Logs as follows: Run Dual Induction/SFL/GR/SP fr/TD ( $\pm 5,550'$ ) to the bottom of the surface csg. Run CNL/LDT (Lithodensity)/GR/Cal and Pe from TD to 3,500'.

# BOP SCHEMATIC FOR DRILLING OPERATIONS CLASS 1 (2M) NORMAL PRESSURE

ROTATING HEAD  
(OPTIONAL)

FILL UP LINE

FLOW LINE  
TO PIT

PIPE  
RAMS

BLIND  
RAMS

KILL LINE  
2" dia min.

TO CHOKE  
MANIFOLD  
2" dia min.

See Choke Manifold drawing for  
specifications

HCR VALVE (OPTIONAL)

2" (MIN) FULL OPENING  
VALVE

MUD CROSS

\*\* Remove check or ball  
from check valve and  
press test to same press  
as BOP's. \*\*

## 1. Test BOP after installation:

Pressure test BOP to 200-300  
psig (low pressure) for 5 min.

Test BOP to Working Press or  
to 70% internal yield of surf csg  
(10 min).

## 2. Test operation of (both) rams on every trip.

## 3. Check and record Accumulator pressure on every tour.

## 4. Re-pressure test BOP stack after changing out rams.

## 5. Have kelly cock valve with handle available.

## 6. Have safety valve and subs to fit all sizes of drill string.

# TESTING PROCEDURE