

UNITED STATES
DEPARTMENT OF THE INTERIOR
BUREAU OF LAND MANAGEMENT

APPLICATION FOR PERMIT TO DRILL OR DEEPEN

1a. TYPE OF WORK

DRILL ☒

DEEPEN ☐

b. TYPE OF WELL

OIL
WELL ☐

GAS
WELL ☒

OTHER

SINGLE
ZONE ☐

MULTIPLE
ZONE ☒

2. NAME OF OPERATOR

XTO Energy Inc.

3. ADDRESS AND TELEPHONE NO.

2700 Farmington Ave., Bldg. K. Ste 1 Farmington, NM 87401

4. LOCATION OF WELL (Report location clearly and in accordance with any State requirements.)
At surface

1865' FNL & 1565' FWL Sec 4, T27N, R08W *SE NW*
At proposed prod. zone

5. LEASE DESIGNATION AND SERIAL NO.

NM - 05791

6. IF INDIAN, ALLOTTEE OR TRIBE NAME

7. UNIT AGREEMENT NAME

8. FARM OR LEASE NAME, WELL NO.

Dawson "A" #1F

9. API WELL NO.

30-045-31123

10. FIELD AND POOL, OR WILDCAT

Blanco Mesaverde
Basin Dakota

11. SEC., T., R., M., OR BLK.
AND SURVEY OR AREA

Sec 4, T27N, R08W

12. COUNTY OR PARISH

San Juan

13. STATE

NM

14. DISTANCE IN MILES AND DIRECTION FROM NEAREST TOWN OR POST OFFICE*

Approx 24 air miles south down Largo Canyon from the Blanco NM Post Office

15. DISTANCE FROM PROPOSED*

LOCATION TO NEAREST
PROPERTY OR LEASE LINE, FT.
(Also to nearest drlg. unit line, if any) 1,078'

16. NO. OF ACRES IN LEASE

321.33

17. NO. OF ACRES ASSIGNED
TO THIS WELL

321.33 *W/2*

18. DISTANCE FROM PROPOSED LOCATION*

TO NEAREST WELL, DRILLING, COMPLETED,
OR APPLIED FOR, ON THIS LEASE, FT. 1,250'

19. PROPOSED DEPTH

7,350'

20. ROTARY OR CABLE TOOLS

0'-7,350' w/Rotary Tools

21. ELEVATIONS (Show whether DF, RT, GR, etc.)

6,345' Ground level

This application is subject to technical and
engineering review pursuant to 43 CFR 3165.3
and 3165.4.

22. APPROX. DATE WORK WILL START*

Summer 2002

23.

PROPOSED CASING AND CEMENTING PROGRAM

| SIZE OF HOLE | GRADE SIZE OF CASING | WEIGHT PER FOOT | SETTING DEPTH | QUANTITY OF CEMENT |
|--------------|----------------------|-----------------|---------------|--------------------------|
| 12-1/4" | 9-5/8", H-40 | 32.3# | 265' | 140 sx Class "B" |
| 8-3/4" | 7", J-55 | 20.0# | 3,150' | 275 sx Liteweight cement |
| 6-1/4" | 4-1/2", J-55 | 10.5# | 7,350' | 450 sx C1 "H" |

ALL OPERATIONS AUTHORIZED ARE
IN FULL COMPLIANCE WITH ATTACHED
"GENERAL REQUIREMENTS".

XTO Energy Inc. plans to drill the above mentioned well as described in the enclosed Surface Use
Program.

The pipeline ROW is also enclosed with this APD.

APD/ROW

IN ABOVE SPACE DESCRIBE PROPOSED PROGRAM: If proposal is to deepen, give data on present productive zone and proposed new productive zone. If proposal is to drill or
deepen directionally, give pertinent data on subsurface locations and measured and true vertical depths. Give blowout preventer program, if any.

24.

SIGNED

JWPatten

TITLE Drilling Engineer

DATE 5/30/02

(This space for Federal or State office use)

PERMIT NO.

APPROVAL DATE

Application approval does not warrant or certify that the applicant holds legal or equitable title to those rights in the subject lease which would entitle the applicant to conduct operations thereon.
CONDITIONS OF APPROVAL, IF ANY:

APPROVED BY

Sc /s/ David J. Mankiewicz

TITLE

DATE

SEP 23

*See Instructions On Reverse Side

Title 18 U.S.C. Section 1001, makes it a crime for any person knowingly and willfully to make to any department or agency of the United States any false,
fictitious or fraudulent statements or representations as to any matter within its jurisdiction.

NMCCD

DISTRICT I
1625 N. French Dr., Hobbs, N.M. 88240

DISTRICT II
811 South First, Artesia, N.M. 88210

DISTRICT III
1000 Rio Brazos Rd., Aztec, N.M. 87410

DISTRICT IV
2040 South Pacheco, Santa Fe, NM 87505

State of New Mexico
Energy, Minerals & Natural Resources Department

Form C-102
Revised August 15, 2000

Submit to Appropriate District Office
State Lease - 4 Copies
Fee Lease - 3 Copies

OIL CONSERVATION DIVISION
2040 South Pacheco
Santa Fe, NM 87505

☐ AMENDED REPORT

WELL LOCATION AND ACREAGE DEDICATION PLAT

| | | | |
|---|---|---------------------------------|---|
| ¹ API Number 30-045-31123 | | ² Pool Code 77319 | ³ Pool Name BLAUO MESAVERDE |
| ⁴ Property Code 22686 | ⁵ Property Name DAWSON "A" | | ⁶ Well Number 1F |
| ⁷ OCRID No. 167067 | ⁸ Operator Name XTO ENERGY INC. | | ⁹ Elevation 6345' |

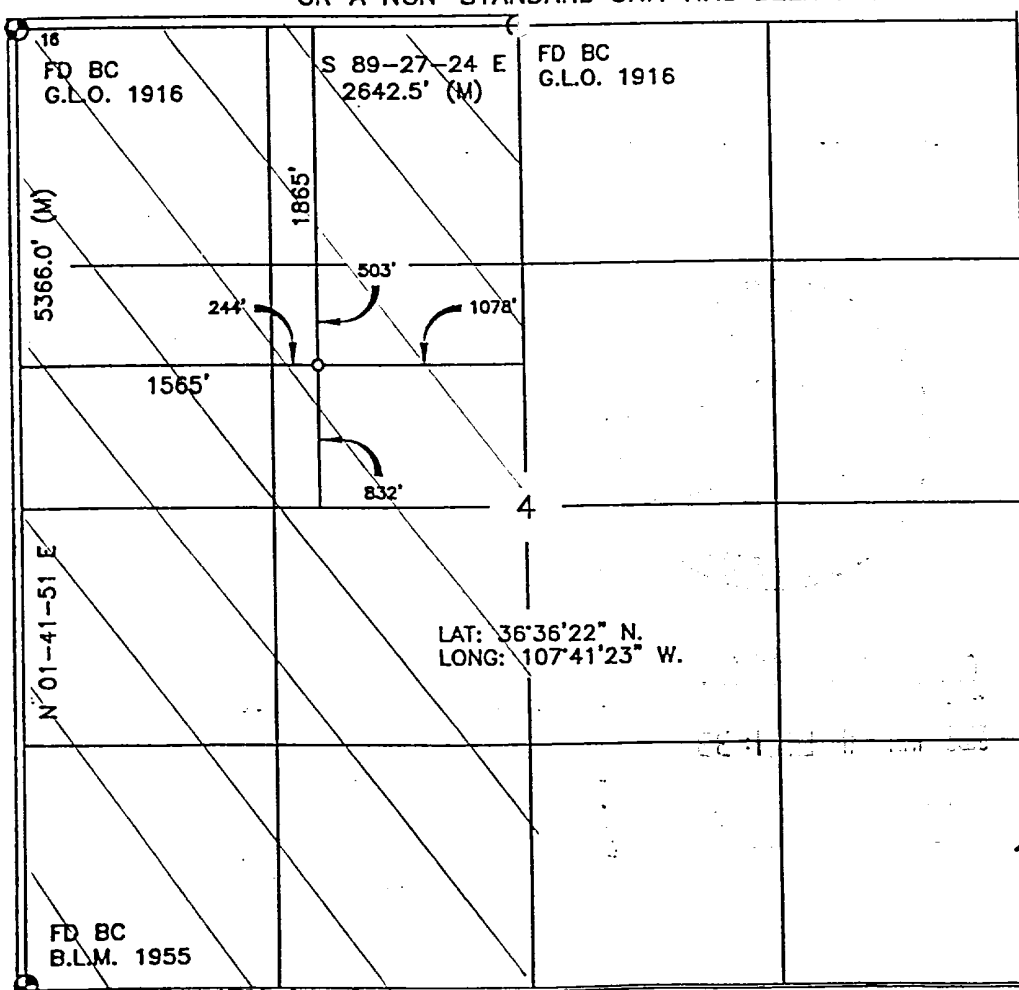
¹⁰ Surface Location

| UL or lot no. | Section | Township | Range | Lot Idn | Feet from the | North/South line | Feet from the | East/West line | County |
|---------------|---------|----------|-------|---------|---------------|------------------|---------------|----------------|----------|
| F | 4 | 27-N | 8-W | | 1865' | NORTH | 1565' | WEST | SAN JUAN |

¹¹ Bottom Hole Location If Different From Surface

| UL or lot no. | Section | Township | Range | Lot Idn | Feet from the | North/South line | Feet from the | East/West line | County |
|---|---------|------------------------------------|-------|----------------------------------|---------------|-------------------------|---------------|----------------|--------|
| | | | | | | | | | |
| ¹² Dedicated Acres 321.33 W/Z | | ¹³ Joint or Infill I | | ¹⁴ Consolidation Code | | ¹⁵ Order No. | | | |

NO ALLOWABLE WILL BE ASSIGNED TO THIS COMPLETION UNTIL ALL INTERESTS HAVE BEEN CONSOLIDATED
OR A NON-STANDARD UNIT HAS BEEN APPROVED BY THE DIVISION



¹⁷ OPERATOR CERTIFICATION

I hereby certify that the information contained herein is true and complete to the best of my knowledge and belief

Signature Jeffrey W Patton
Printed Name JEFFREY W PATTON
Title DRAWING ENGINEER
Date 5-30-02

¹⁸ SURVEYOR CERTIFICATION

I hereby certify that the well location shown on this plat was plotted from field notes of actual surveys made by me or under my supervision, and that the same is true and correct to the best of my belief.

OCT. 14 2002
Date of Survey
Signature and Seal of Professional Surveyor
14827
Certificate Number

DISTRICT I
1625 N. French Dr., Hobbs, N.M. 88240

State of New Mexico
Energy, Minerals & Natural Resources Department

Form C-102
Revised August 15, 2000

DISTRICT II
811 South First, Artesia, N.M. 88210

DISTRICT III
1000 Rio Brazos Rd., Aztec, N.M. 87410

DISTRICT IV
2040 South Pacheco, Santa Fe, NM 87505

OIL CONSERVATION DIVISION
2040 South Pacheco
Santa Fe, NM 87505

Submit to Appropriate District Office
State Lease - 4 Copies
Fee Lease - 3 Copies

☐ AMENDED REPORT

WELL LOCATION AND ACREAGE DEDICATION PLAT

| | | | |
|-----------------------------|-----------------------------------|---------------------|----------------------------|
| *API Number 30-045-31123 | | *Pool Code 71599 | *Pool Name BASIN DAKOTA |
| *Property Code 22686 | *Property Name DAWSON "A" | | *Well Number 1F |
| *OGRID No. 167067 | *Operator Name XTO ENERGY INC. | | *Elevation 6345' |

¹⁰ Surface Location

| UL or lot no. | Section | Township | Range | Lot Idn | Feet from the | North/South line | Feet from the | East/West line | County |
|---------------|---------|----------|-------|---------|---------------|------------------|---------------|----------------|----------|
| F | 4 | 27-N | 8-W | | 1865' | NORTH | 1565' | WEST | SAN JUAN |

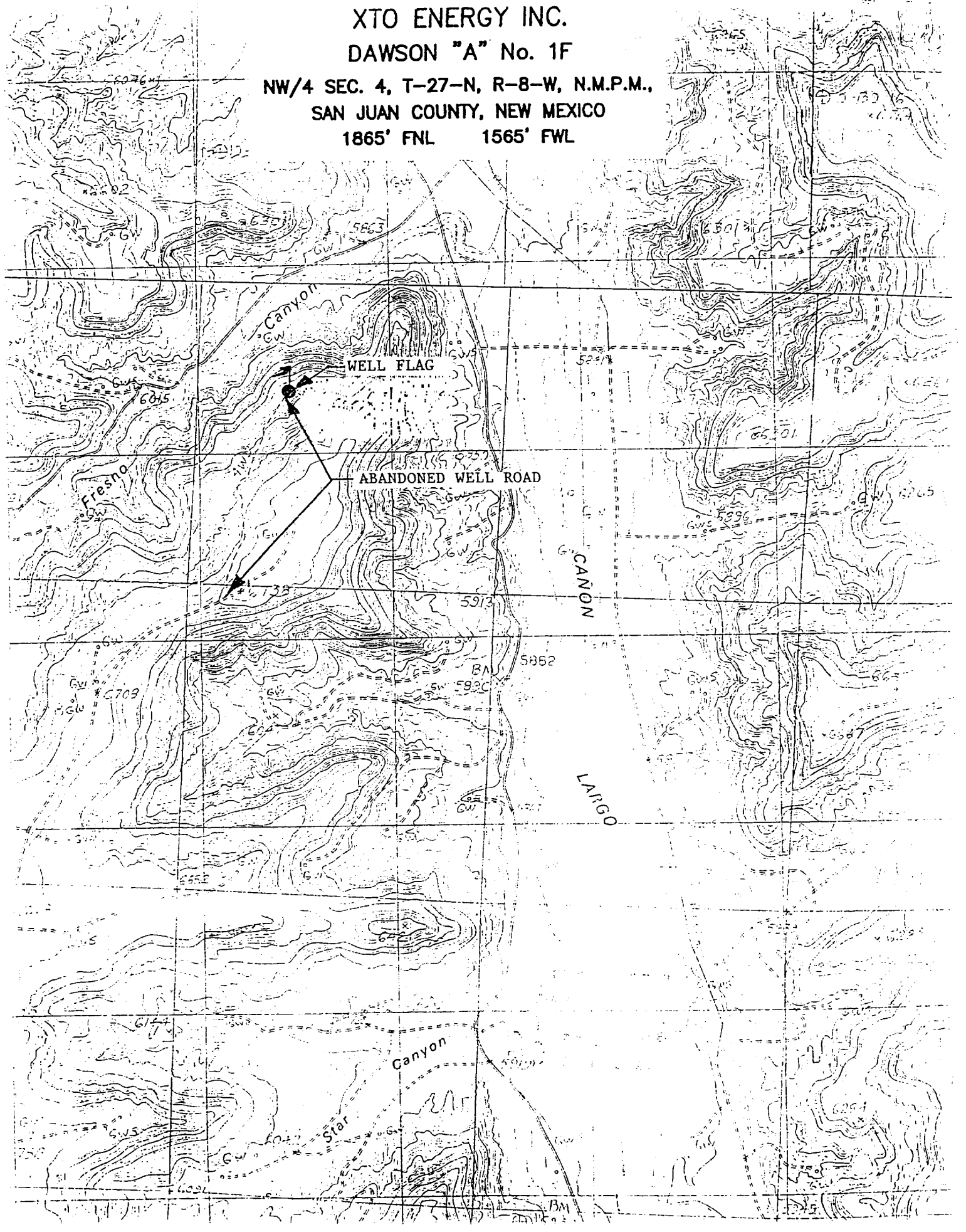
¹¹ Bottom Hole Location If Different From Surface

| UL or lot no. | Section | Township | Range | Lot Idn | Feet from the | North/South line | Feet from the | East/West line | County |
|----------------------------|---------|-----------------------|-------|---------------------|---------------|------------------|---------------|----------------|--------|
| | | | | | | | | | |
| *Dedicated Acres 321.33 | | *Joint or Infill I | | *Consolidation Code | | *Order No. | | | |

NO ALLOWABLE WILL BE ASSIGNED TO THIS COMPLETION UNTIL ALL INTERESTS HAVE BEEN CONSOLIDATED
OR A NON-STANDARD UNIT HAS BEEN APPROVED BY THE DIVISION

| | | | |
|--|--|---|--|
| ¹⁶ FD BC G.L.O. 1916 S 89-27-24 E 2642.5' (M) 5366.0' (M) 1865' 244' 503' 1078' 1565' 832' 4 LAT: 36°36'22" N. LONG: 107°41'23" W. FD BC B.L.M. 1955 | | ¹⁷ OPERATOR CERTIFICATION I hereby certify that the information contained herein is true and complete to the best of my knowledge and belief. Signature <u>Jeffrey W. Patton</u> Printed Name <u>JEFFREY W. PATTON</u> Title <u>DRILLING ENGINEER</u> Date <u>5-20-02</u> | |
| ¹⁸ SURVEYOR CERTIFICATION I hereby certify that the well location shown on this plat was plotted from field notes of actual surveys made by me or under my supervision, and that the same is true and correct to the best of my belief. OCT. 14 2002 Date of Survey Signature and Seal of Professional Surveyor 14827 Certificate Number | | | |

1865' FNL 1565' FWL



XTO ENERGY INC.

Dawson "A" #1F

APD Data

May 30, 2002

Surface Location: 1,865' FNL & 1,565' FWL, Sec 4, T27N, R08W County: San Juan State: New Mexico

TOTAL DEPTH: ±7,350'

GR ELEV: 6,345'

OBJECTIVE: Dakota/Mesaverde

Est KB ELEV: 6,358' (13' AGL)

1. MUD PROGRAM:

| | | | |
|------------|---------------|----------------|--------------|
| INTERVAL | 0' to 265' | 265' to 3,150' | 3,150' to TD |
| HOLE SIZE | 12-1/4" | 8-3/4" | 6-1/4" |
| MUD TYPE | FW/Native Mud | FW/Polymer | Air/Foam |
| WEIGHT | 8.6-8.8 | 8.6-9.0 | |
| VISCOSITY | 28-32 | 29-34 | |
| WATER LOSS | NC | NC | |

Remarks: Use fibrous materials as needed to control seepage and lost circulation. Pump high viscosity sweeps as needed for hole cleaning. RU air compressors after setting the intermediate csg. Drill with air or foam to TD.

2. CASING PROGRAM:

Surface Casing: 9-5/8" casing to be set at ± 265' in 8.6 ppg mud

| Interval | Length | Wt | Gr | Cplg | Coll Rating (psi) | Burst Rating (psi) | Jt Str (M-lbs) | ID (in) | Drift (in) | SF Coll | SF Burst | SF Ten |
|----------|--------|-------|------|------|-------------------|--------------------|----------------|---------|------------|---------|----------|--------|
| 0'-265' | 265' | 32.3# | H-40 | STC | 1370 | 2270 | 254 | 9.001 | 8.972 | 5.98 | 5.68 | 15.73 |

Intermediate Casing: 7" casing to be set at ±3,150' in 9.0 ppg mud.

| Interval | Length | Wt | Gr | Cplg | Coll Rating (psi) | Burst Rating (psi) | Jt Str (M-lbs) | ID (in) | Drift (in) | SF Coll | SF Burst | SF Ten |
|-----------|--------|-------|------|------|-------------------|--------------------|----------------|---------|------------|---------|----------|--------|
| 0'-3,150' | 3,150' | 20.0# | J-55 | STC | 2257 | 3740 | 234 | 6.456 | 6.331 | 1.15 | 1.31 | 2.57 |

Production Casing: 4-1/2" casing to be set at 7,350' in air.

| Interval | Length | Wt | Gr | Cplg | Coll Rating (psi) | Burst Rating (psi) | Jt Str (M-lbs) | ID (in) | Drift (in) | SF Coll | SF Burst | SF Ten |
|-----------|--------|-------|------|------|-------------------|--------------------|----------------|---------|------------|---------|----------|--------|
| 0'-7,350' | 7,350' | 10.5# | J-55 | STC | 4010 | 4790 | 132 | 4.052 | 3.927 | 1.33 | 1.20 | 1.90 |

3. **WELLHEAD:**

- A. Bradenhead: 9-5/8" x 7" 2,000 psig WP (4,000 psig test).
Casinghead: 7" x 4-1/2" 3,000 psig WP (6,000 psig test).

4. **CEMENT PROGRAM (Slurry design may change slightly, but the plan is to circulate cement to surface on both casing strings):**

- A. Surface: 9-5/8", 32.3#, H-40, STC casing to be set at $\pm 265'$.

Lead: 140 sx of Class "B" (Standard) cement containing 2% CaCl_2 , ¼ pps celloflake, mixed at 15.6 ppg, 1.18 ft³/sk, & 5.20 gal wtr/sk.

Total slurry volume is 166 ft³, 100% excess of calculated annular volume to 265'.

- B. Intermediate: 7", 20.0#, J-55, STC casing to be set at $\pm 3,150'$.

Lead: 225 sx of Class "B" (Standard) cement containing $\pm 3\%$ extender, ¼ pps celloflake and 2% CaCl_2 mixed at 11.4 ppg, 2.88 ft³/sk, 17.89 gal wtr/sx.

Tail: 50 sx of Class "B" (Standard) cement containing ¼ pps celloflake and 2% CaCl_2 mixed at 15.6 ppg, 1.18 ft³/sk, 5.20 gal wtr/sx.

Total slurry volume is 707 ft³, circulated to surface. This value is 50% (excess) over gage hole volume.

- C. Production: 4-1/2", 10.5#, J-55, STC casing to be set at $\pm 7,350'$. DV Tool @ 4,200'.

First Stage:

Lead: 100 sx of Class "H" Premium Lite High Strength (65/35/6), ¼ pps celloflake, 2% KCl, 0.5% fluidloss, 0.2% dispersant & 2% Phenoseal mixed at 12.5 ppg, 2.01 ft³/sk, 10.12 gal wtr/sx.

Tail: 150 sx of Class "H" Premium cement containing 4% gel (extender), ¼ pps celloflake, 0.5% fluidloss, 0.2% dispersant and 2% Phenoseal mixed at 14.7 ppg, 1.38 ft³/sk, 6.70 gal wtr/sx..

Second Stage:

Lead: 100 sx of Class "B" cement containing 3% extender & ¼ pps celloflake mixed at 11.4 ppg, 2.82 ft³/sk, 17.5 gal wtr/sx.

Tail: 100 sx of Class "B" cement containing ¼ pps celloflake and 2% Phenoseal mixed at 15.6 ppg, 1.18 ft³/sk, 5.20 gal wtr/sx..

Total estimated slurry volume for the 4-1/2" production casing is 808 ft³ for 4,700' of fill. Est. TOC should be @ $\pm 2,650'$. 35% (excess) over gage hole volume has been added to the number of sacks indicated..

BOP SCHEMATIC FOR DRILLING OPERATIONS CLASS 1 (2M) NORMAL PRESSURE

1. Test BOP after installation:

Pressure test BOP to 200-300
psig (low pressure) for 5 min.

Test BOP to Working Press or
to 70% internal yield of surf csg
(10 min).

2. Test operation of (both) rams on every trip.

3. Check and record Accumulator pressure on every tour.

4. Re-pressure test BOP stack after changing out rams.

5. Have kelly cock valve with handle available.

6. Have safety valve and subs to fit all sizes of drill string.

TESTING PROCEDURE

