

7057	ED PASC FIELD SRV: CES P.O. BOX 1492 ED PASC, TX 79978	G	P-09-T028N-R005W

#### IV. Produced Water

<sup>23</sup> POD	<sup>24</sup> POD ULSTR Location and Description
-------------------	--

#### V. Well Completion Data

<sup>25</sup> Spud Date	<sup>26</sup> Ready Date	<sup>27</sup> TD	<sup>28</sup> PBTB	<sup>29</sup> Perforations
<sup>30</sup> Hole Size	<sup>31</sup> Casing & Tubing Size	<sup>32</sup> Depth Set	<sup>33</sup> Sacks Cement	

#### VI. Well Test Data

<sup>34</sup> Date New Oil	<sup>35</sup> Gas Delivery Date	<sup>36</sup> Test Date	<sup>37</sup> Test Length	<sup>38</sup> Tbg. Pressure	<sup>39</sup> Csg. Pressure
<sup>40</sup> Choke Size	<sup>41</sup> Oil	<sup>42</sup> Water	<sup>43</sup> Gas	<sup>44</sup> AOF	<sup>45</sup> Test Method

<sup>46</sup> I hereby certify that the rules of the Oil Conservation Division have been complied with and that the information given above is true and complete to the best of my knowledge and belief.

Signature: *Dolores Diaz*

Printed Name:  
Dolores Diaz

Title:  
Production Associate

Date:  
7/11/96

Phone  
(505) 326-9700

#### OIL CONSERVATION DIVISION

Approved by: Frank T. Chavez

Title: District Supervisor

Approved Date: July 11, 1996

<sup>47</sup> If this is a change of operator fill in the OGRID number and name of the previous operator  
14538 Meridian Oil Production

Previous Operator Signature

Printed Name

Title

Date

Signature: *Dolores Diaz*

Dolores Diaz

Production Associate

7/11/96

# B. & R. SERVICE, INC.

## TEMPERATURE SURVEY

**COMPANY** EL PASO NATURAL GAS COMPANY

**WELL** SAN JUAN 28-5 UNIT # 89 **FIELD**

**COUNTY** RIO ARRIBA **STATE** NEW MEXICO

**SEC.** SE 9 **TWP.** 28 N **RGE.** E.W.

**APPROX. TOP CEMENT** 3150'

**Survey Begins at** 2500 **Ft. Ends at** 8051 **Ft.**

**Approx. Fill-Up** **Max. Temp.** 180° @ 8051'

**Log Measured From** K.B. **Run No.** 1

Casing Size	Casing Depth	Diam of Hole	Depth
4 1/2" from	to 8088	6 1/2" from	to
from	to	from	to

**Date of Cementing** 6-2-72 **Time** 8:00 A.M.

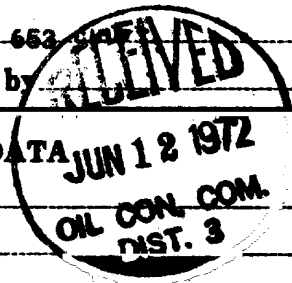
**Date of Survey** 6-2-72 **Time** 8:00 P.M.

**Amount of Cement** 255 SKS. CL. A 8% GEL 1/2 CU. FT. FINE OIL/SK. 4%

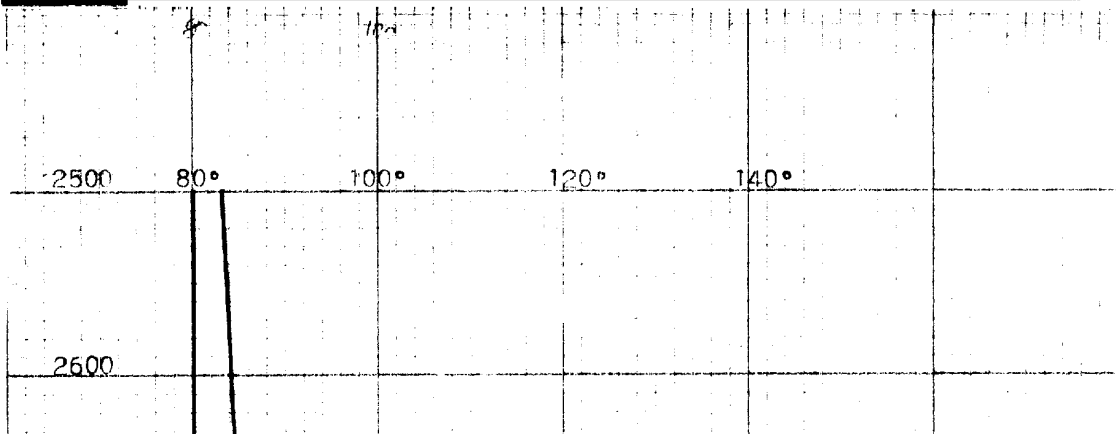
HR 100 SKS. CL. A 1/2# TURFLUG/SK. 4% HR 653

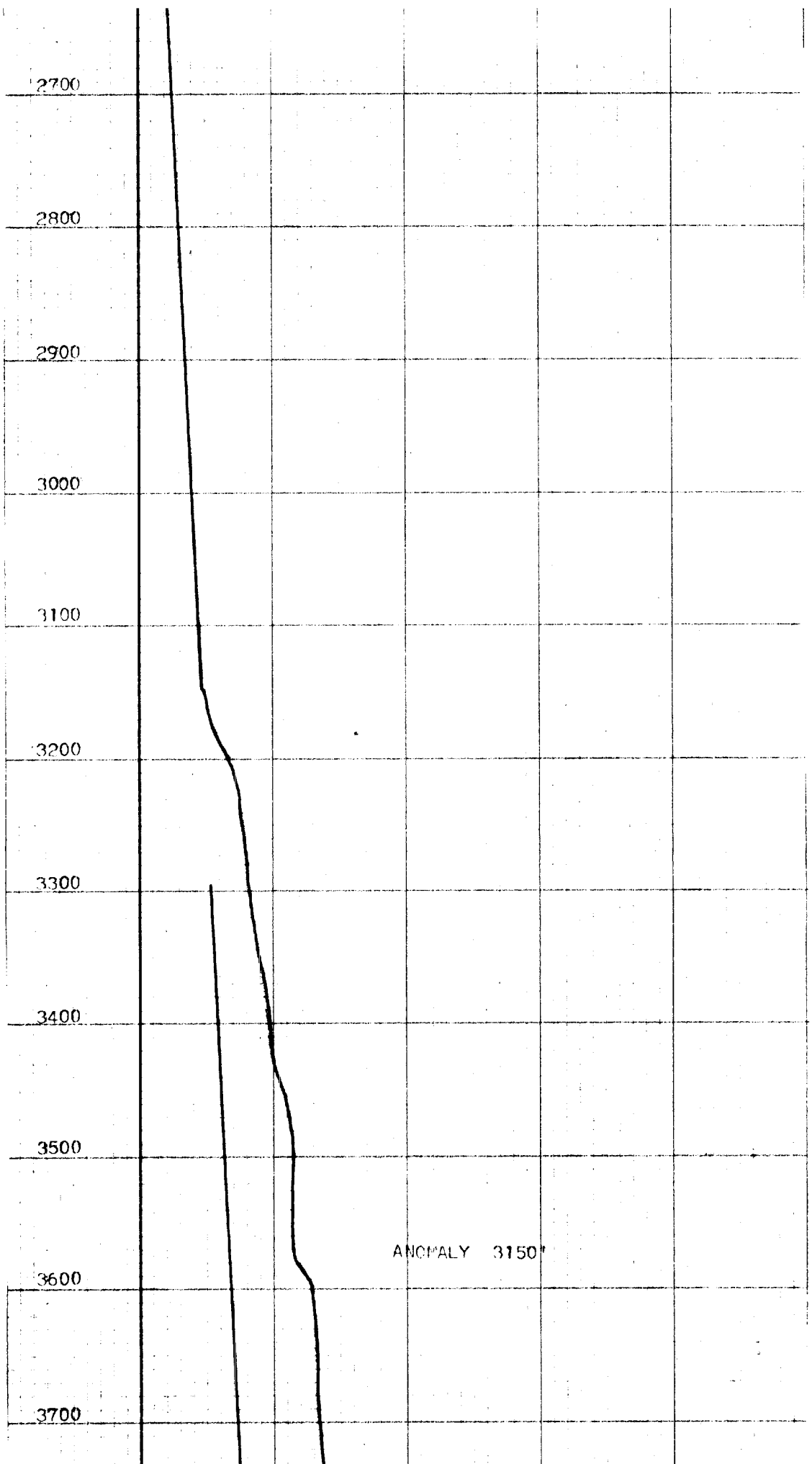
**Recorded by** SMITH **Witnessed by**

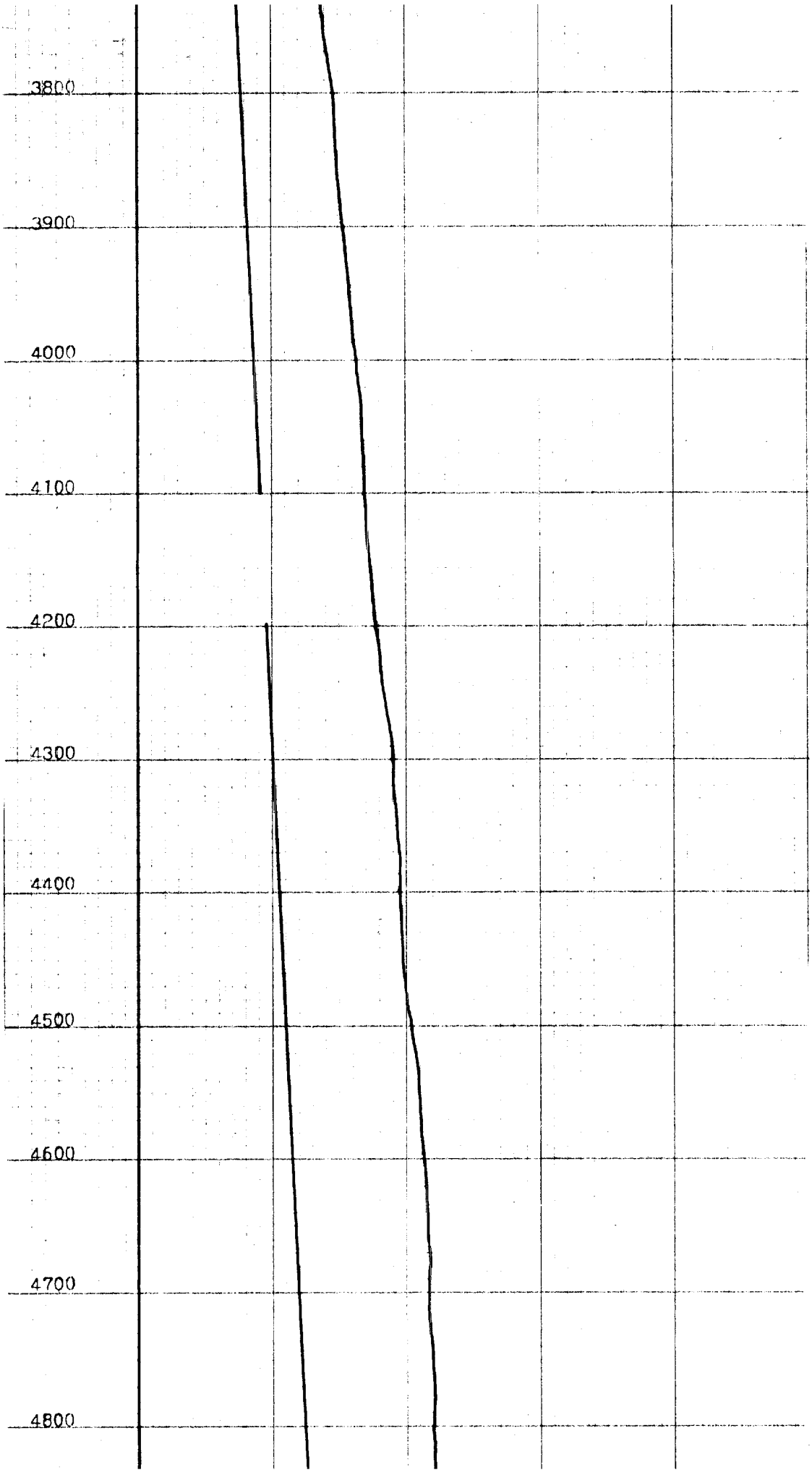
REMARKS OR OTHER DATA

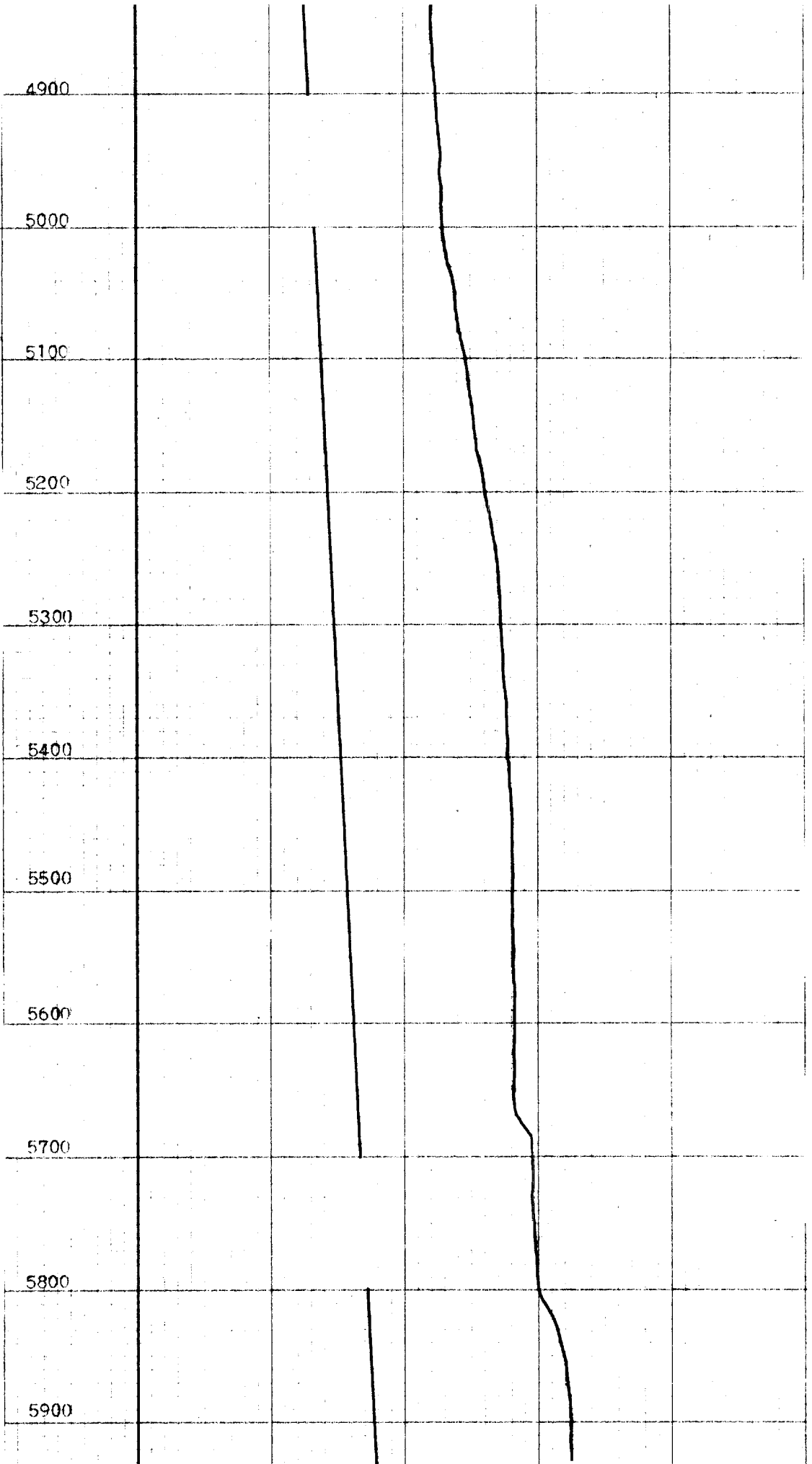


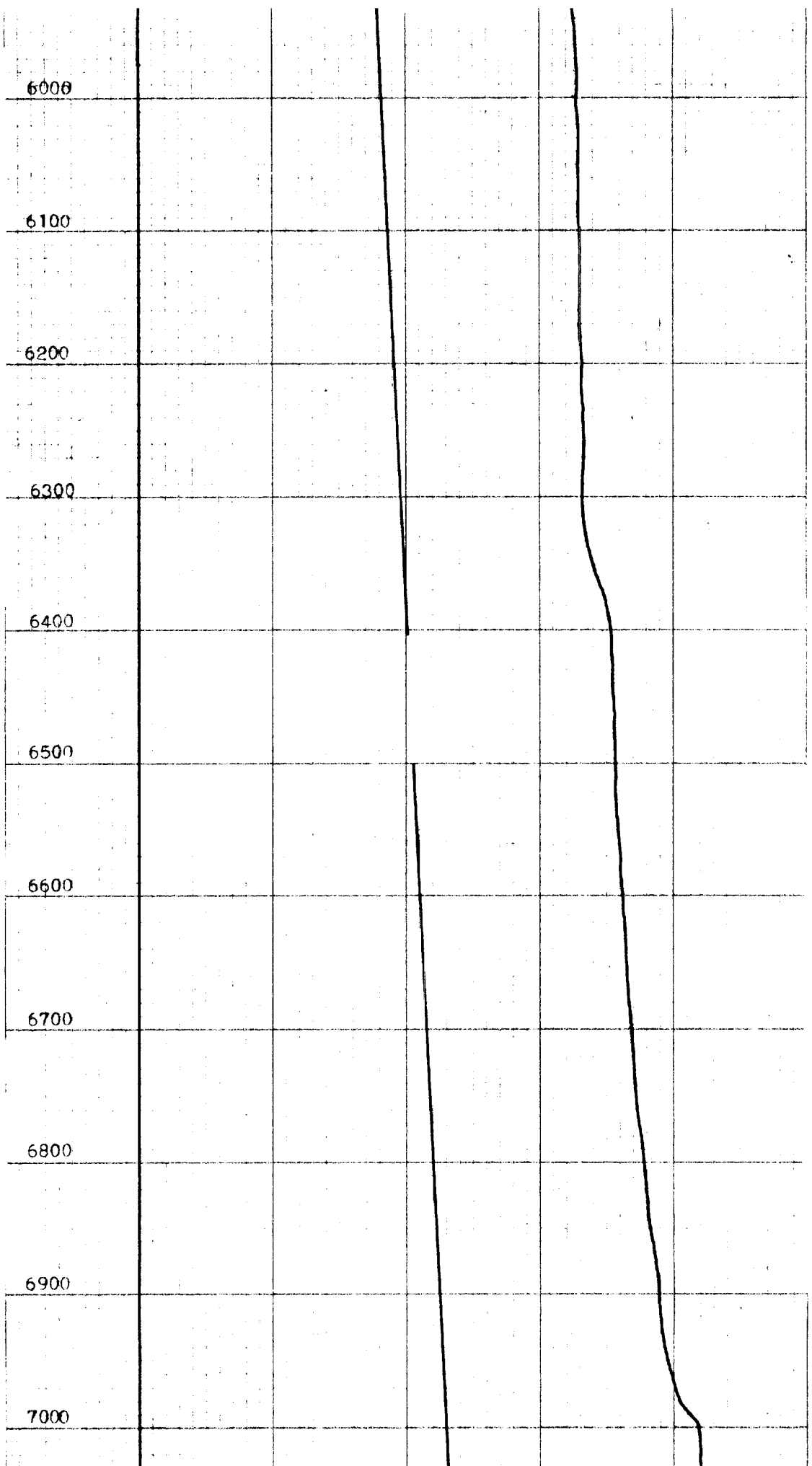
### TEMPERATURE IN DEGREES FAHRENHEIT

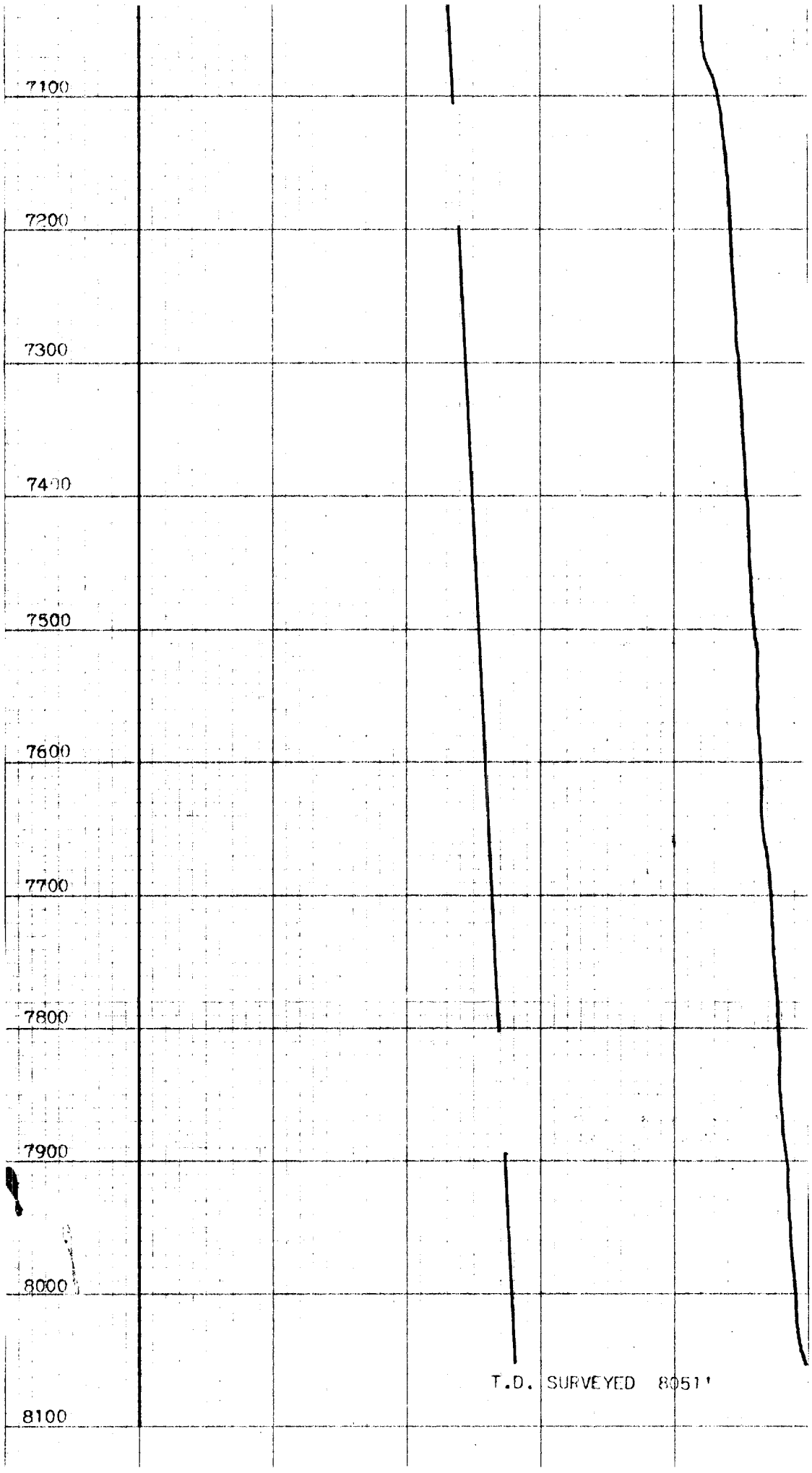












7100

7200

7300

7400

7500

7600

7700

7800

7900

8000

8100

T.D. SURVEYED 8051'

