

UNITED STATES
DEPARTMENT OF THE INTERIOR
BUREAU OF LAND MANAGEMENT

APPLICATION FOR PERMIT TO DRILL, DEEPEN, OR PLUG BACK

1a. TYPE OF WORK

DRILL ☒ X

DEEPEN ☐

PLUG BACK ☐

b. TYPE OF WELL

OIL
WELL ☐

GAS
WELL ☒ X

OTHER

SINGLE
ZONE ☒ X

MULTIPLE
ZONE ☐

2. NAME OF OPERATOR

El Paso Natural Gas Company

3. ADDRESS OF OPERATOR

PO Box 4289, Farmington, NM 87499

4. LOCATION OF WELL (Report location clearly and in accordance with any State requirements.)

At surface
1010'N, 320'E

At proposed prod. zone

BUREAU OF LAND MANAGEMENT

14. DISTANCE IN MILES AND DIRECTION FROM NEAREST TOWN OR POST OFFICE

12 miles Southwest of Gobernador, NM

15. DISTANCE FROM PROPOSED*
LOCATION TO NEAREST
PROPERTY OR LEASE LINE, FT.
(Also to nearest drlg. unit line, if any)

320'

16. NO. OF ACRES IN LEASE

Unit 1988

17. NO. OF ACRES ASSIGNED
TO THIS WELL

E 316.32

18. DISTANCE FROM PROPOSED LOCATION*
TO NEAREST WELL, DRILLING, COMPLETED,
OR APPLIED FOR, ON THIS LEASE, FT.

600'

19. PROPOSED DEPTH

7175'

20. ROTARY OR CABLE TOOLS

Rotary

21. ELEVATIONS (Show whether DF, RT, GR, etc.)

6040' GL

22. APPROX. DATE WORK WILL START*

DRILLING OPERATIONS AUTHORIZED ARE

23.

PROPOSED CASING AND CEMENTING PROGRAM SUBJECT TO COMPLIANCE WITH ATTACHED

"GENERAL REQUIREMENTS"

SIZE OF HOLE	SIZE OF CASING	WEIGHT PER FOOT	SETTING DEPTH	QUANTITY OF CEMENT
12 1/4"	9 5/8"	36.0#	200'	130 cf circulated
8 3/4"	7"	20.0#	3000'	304 cf cover Ojo Alamo
6 1/4"	4 1/2"	10.5&11.6#	7175'	647 cf fill to inter.

Selectively perforate and sand water fracture the Dakota formation.

A 3000 psi WP and 6000 psi test double gate preventer equipped with blind and pipe rams will be used for blow out prevention on this well.

This gas is dedicated.

The E/2 of Section 33 is dedicated to this well.

This action is subject to technical and
procedural review pursuant to 43 CFR 3165.3
and appeal pursuant to 43 CFR 3165.4.

JUL 01 1985

OIL CON. DIV.
DIST. 3

IN ABOVE SPACE DESCRIBE PROPOSED PROGRAM: If proposal is to deepen or plug back, give data on present productive zone and proposed new productive zone. If proposal is to drill or deepen directionally, give pertinent data on subsurface locations and measured and true vertical depths. Give blowout preventer program, if any.

24.

SIGNED

(This space for Federal or State office use)

PERMIT NO.

APPROVAL DATE

APPROVED BY

CONDITIONS OF APPROVAL, IF ANY:

TITLE

Drilling Clerk

6-4-85

APPROVED
AS AMENDED

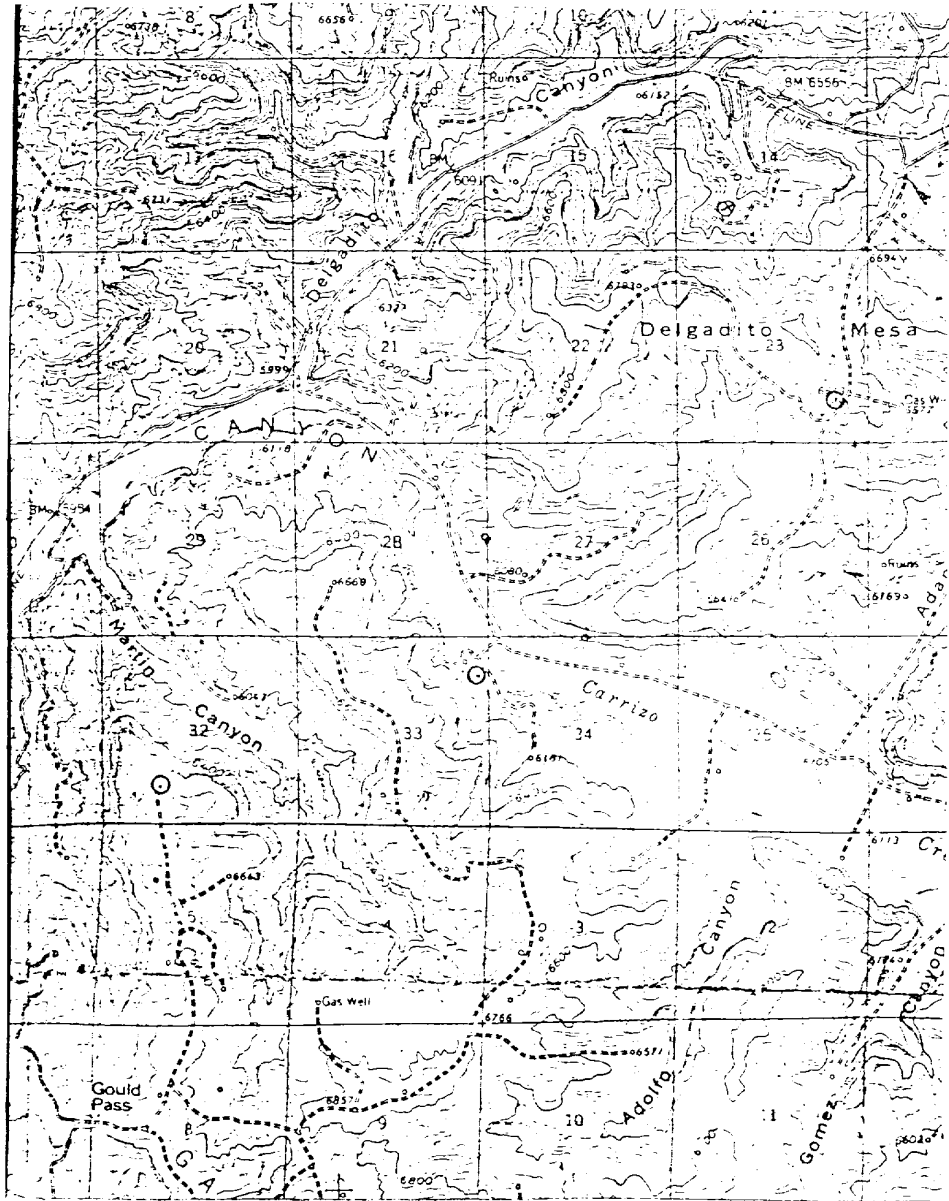
JUN 27 1985

M. MILLENBACH
AREA MANAGER

NMOCC

*See Instructions On Reverse Side

Title 18 U.S.C. Section 1001, makes it a crime for any person knowingly and willfully to make to any department or agency of the



Map #1

LEGEND OF RIGHT-OF-WAYS

EXISTING ROADS

EXISTING PIPELINES

EXISTING ROAD & PIPELINE

PROPOSED ROADS

PROPOSED PIPELINES

PROPOSED ROAD & PIPELINE