



STATE OF NEW MEXICO
ENERGY, MINERALS AND NATURAL RESOURCES DEPARTMENT
OIL CONSERVATION DIVISION



BRUCE KING
GOVERNOR

ANITA LOCKWOOD
CABINET SECRETARY

POST OFFICE BOX 2088
STATE LAND OFFICE BUILDING
SANTA FE, NEW MEXICO 87504
(505) 827-5800

March 11, 1994

RECEIVED

MAR 15 1994

**OIL CON. DIV.
DIST. 3**

Administrative Order NSL-3365

Meridian Oil, Inc.
P.O. Box 4289
Farmington, NM 87499-4289

Attention: Peggy Bradfield

Dear Ms. Bradfield:

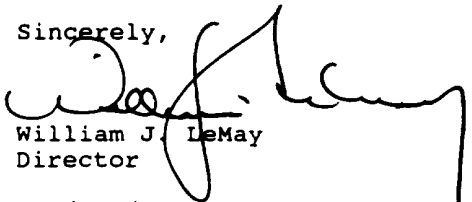
Reference is made to your application date March 2, 1994 for an unorthodox gas well location for both the Basin-Fruitland Coal Gas Pool and the Undesignated Tapacito Pictured Cliffs Pool for the proposed San Juan 28-5 Unit Well No. 236. Said well to be drilled 285 feet from the South line and 955 feet from the West line (Unit M) of Section 26, Township 28 North, Range 5 West, NMPM, Rio Arriba County, New Mexico. It is our understanding that both said zones are to be downhole commingled.

The S/2 of said Section 26 being a standard 320-acre gas spacing and proration unit in the Basin-Fruitland Coal Gas Pool and the SW/4 of said Section 26 being a standard 160-acre gas spacing and proration unit in the Undesignated Tapacito Pictured Cliffs Pool are to be dedicated to said well.

By the authority granted me under the provisions of Rule 8 of the Special Rules and Regulations for the Basin-Fruitland Coal Gas Pool, as promulgated by Division Order No. R-8768, as amended, and Rule 2(c) of the "General Rules and Regulations for the Tapacito Pictured Cliffs Pool", as promulgated by Division Order No. R-8170, as amended, the above-described unorthodox gas well location is hereby approved.

Also, Meridian Oil, Inc. shall comply with all other provisions of said Order No. R-8768, as amended, pertaining to the downhole commingling of coal gas production with gas from the Undesignated Tapacito Pictured Cliffs interval.

Sincerely,


William J. LeMay
Director

WJL/MES/amg

cc: Oil Conservation Division - Aztec
US Bureau of Land Management - Farmington

Ernie Busch

From: Ernie Busch
To: Mike Stogner
Subject: MERIDIAN OIL INC. (NSL)
Date: Wednesday, March 09, 1994 8:45AM
Priority: High

SAN JUAN 28-5 UNIT #236
M-26-28N-05W
285' FSL; 955' FWL
RECOMMEND: APPROVAL

Control Number: 023467

POINT OF DISPOSITION AND WELL COMPLETION INFORMATION

OGRID: 021042 Operator Name: SNYDER OIL CORP NW

1625 BROADWAY ST SU 2200 DENVER

CO 80202

C-115 Filer Contact Name: _____

Phone: () _____ FAX: () _____

POD: 2303010 Product Type: OIL Facility Type: 03 Location: K 11 25N 10W County SAN JUAN

OGRID Name

OGRID Name

Authorized Transporter(s): 009018 GIANT REFINERY

Description of POD (40 characters or less): _____

POD: 2303030 Product Type: GAS Facility Type: 01 Location: K 11 25N 10W County SAN JUAN

OGRID Name

OGRID Name

Authorized Transporter(s): 007057 EL PASO-NATURAL GAS COMPANY

00803 GAS CO OF NEW MEXICO

Description of POD (40 characters or less): _____

POD: 2303050 Product Type: WATER Facility Type: 05 Location: K 11 25N 10W County SAN JUAN

Description of POD (40 characters or less): _____

WELL COMPLETIONS

Code Pool Name

Code Producing Property Name

API Well No. Location Well

71599 BASIN DAKOTA (PRORATED GAS)

010276 NAVAJO

30-045-26009 K 11 25N 10W 003E

MERIDIAN OIL

March 2, 1994

Sent Federal Express

Mr. William LeMay
New Mexico Oil Conservation Division
Post Office Box 2088
Santa Fe, New Mexico 87501

Re: Meridian Oil Inc. San Juan 28-5 Unit #236
285'FSL, 955'FWL, Section 26, T-28-N, R-5-W - Rio Arriba County, New Mexico
API # 30-039-(not assigned)

Dear Mr. LeMay:

Meridian Oil Inc. is applying for administrative approval of a non-standard location for the above location in both the Fruitland Coal and Pictured Cliffs formations. This application for the referenced location is due to terrain as shown on the topographic map and archaeology.

This well is planned as a Basin Fruitland Coal/South Blanco Pictured Cliffs well, and application will be made to the New Mexico Oil Conservation Division to commingle this well.

The following attachments are for your review:

1. Application for Permit to Drill.
2. Completed C-102 at referenced location.
3. Offset operators/owners plat
4. 7.5 minute topographic map showing the orthodox windows for the southwest quarter dedication for the Pictured Cliffs and the south half dedication for the Fruitland Coal; and enlargement of the map to define topographic features.
5. If the well were directionally drilled to a standard bottom hole location, the economics would be severely burdened due to the incremental directional drilling costs of \$150,000.

Meridian Oil Inc. is operator of the San Juan 28-5 Unit and is the offsetting operator for this section.

Sincerely,



Peggy Bradfield
Regulatory/Compliance Representative

encs.

RECEIVED
MAR 07 1994
OIL CON. DIV
DIST. 3

UNITED STATES
DEPARTMENT OF THE INTERIOR
BUREAU OF LAND MANAGEMENT

APPLICATION FOR PERMIT TO DRILL, DEEPEN, OR PLUG BACK

1a. Type of Work DRILL	5. Lease Number SF-079520A
1b. Type of Well GAS	6. If Indian, All. or Tribe
2. Operator MERIDIAN OIL	7. Unit Agreement Name San Juan 28-5 Unit
3. Address & Phone No. of Operator PO Box 4289, Farmington, NM 87499 (505) 326-9700	8. Farm or Lease Name San Juan 28-5 Unit 9. Well Number 236
4. Location of Well 285' FSL, 955' FWL Latitude 36° 37' 31", Longitude 107° 20' 01"	10. Field, Pool, Wildcat Basin Ft Coal/ S. Blanco Pic. Cliffs 11. Sec., Twn, Rge, Mer. Sec 26, T-28-N, R-5-W NMPM
14. Distance in Miles from Nearest Town 5 miles to Gobernador	12. County Rio Arriba
	13. State NM
15. Distance from Proposed Location to Nearest Property or Lease Line 285'	
16. Acres in Lease	17. Acres Assigned to Well 320 S/2; 160 SW/4
18. Distance from Proposed Location to Nearest Well, Drig, Compl, or Applied for on this Lease 250'	
19. Proposed Depth 3740'	20. Rotary or Cable Tools Rotary
21. Elevations (DF, FT, GR, Etc.) 6728' GR	22. Approx. Date Work will Start 4th quarter 1993
23. Proposed Casing and Cementing Program See Operations Plan attached	
24. Authorized by:  Regional Drilling Engineer	<div style="text-align: center;">OIL CON. DIV DIST. 3</div> <div style="text-align: right;">10/12/93 Date</div>

RECEIVED

MAR 07 1994

PERMIT NO. _____	APPROVAL DATE _____
APPROVED BY _____	TITLE _____ DATE _____

Archaeological Report submitted by Arboles Contract Archaeology 04-08-93 Technical Report #227
Threatened and Endangered Species Report submitted 04-28-93.
NOTE: This format is issued in lieu of U.S. BLM Form 3160-3

OPERATIONS PLAN

Well Name: San Juan 28-5 Unit #236
Location: 285'FSL, 955'FWL Section 26, T-28-N, R-05-W
 Rio Arriba County, New Mexico
 Latitude 36° 37' 31", Longitude 107° 20' 01"
Formation: Basin Fruitland Coal/S.Blanco Pictured Cliffs
Elevation: 6728'GL

Formation:	Top	Bottom	Contents
Surface	San Jose	2955'	
Ojo Alamo	2955'	3110'	aquifer
Kirtland	3110'	3385'	
Fruitland	3385'	3595'	
Fruitland Coal Top	3435'	3585'	gas
Pictured Cliffs	3595'	3825'	gas
Lewis	3825'		
Total Depth	3740'		

Logging Program: Mud logs from 3350' to Total Depth
 DIL-GR-SP - surface to Total Depth
 GL-GR-SP-CAL/Dens-Neut-GR-CAL - 3350' to Total Depth

Mud Program:

Interval	Type	Weight	Vis.	Fluid Loss
0- 200'	Spud	8.4-8.9	40-50	no control
200-3740'	Non-dispersed	8.4-9.5	30-60	no control

Casing Program:

Hole Size	Depth Interval	Csg.Size	Wt.	Grade
12 1/4"	0 - 200'	8 5/8"	24.0#	K-40
7 7/8"	0 - 3740'	4 1/2"	10.5#	K-55

Tubing Program:

0 - 3740'	2 3/8"	4.7#	J-55
-----------	--------	------	------

Float Equipment: 8 5/8" surface casing - saw tooth guide shoe.
 Centralizers will be run in accordance with Onshore Order #2.

4 1/2" production casing - float shoe on bottom. Three centralizers run every other joint above shoe. Four centralizers run every 3rd joint to the base of the Ojo Alamo @ 3110'. Two turbolizing type centralizers - one below and one into the base of the Ojo Alamo @ 3110'. Standard centralizers thereafter every fourth joint up to the base of the surface pipe.

Wellhead Equipment: 8 5/8" x 4 1/2" x 2 3/8" x 11" 2000 psi xmas tree assembly.

October 11, 1993

Cementing:

8 5/8" surface casing - cement with 235 sx Class "B" cement with 1/4# flocele/sx and 3% calcium chloride (298 cu.ft. of slurry, 200% excess to circulate to surface). WOC 12 hrs. Test casing to 600 psi for 30 minutes.

4 1/2" production casing -

First stage - lead w/78 sx Class "B" 65/35 Poz w/6% gel, 2% calcium chloride, 6.25# gilsonite/sx and 1/4# flocele/sx (137 cu.ft. of slurry), tail w/100 sx Class "B" w/2% calcium chloride, 5#/sx gilsonite, 0.25#/sx celloflake (118 cu.ft.), 100% excess to circulate stage tool @ 3335').

Second stage - lead w/718 sx of Class "B" 65/35 Poz w/6% gel, 2% calcium chloride, 6.25# gilsonite/sx and 1/4# flocele/sx (1271 cu.ft.). Tail w/50 sx Class "B" w/2% calcium chloride (59 cu.ft. of slurry, 75% excess to circulate to surface). WOC 12 hrs. If cement does not circulate to surface, a temperature log will be run after 8 hours to determine TOC.

BOP and tests:

Surface to TD - 11" 2000 psi (minimum double gate BOP stack (Reference Figure #1 and #2). Prior to drilling out surface casing, test rams to 600 psi/30 min.

Completion - 6" 2000 psi (minimum) double gate BOP stack (Reference Figure #2). Prior to completion operations, test rams and casing to 2000 psi/15 min.

From surface to TD - choke manifold (Reference Figure #3).

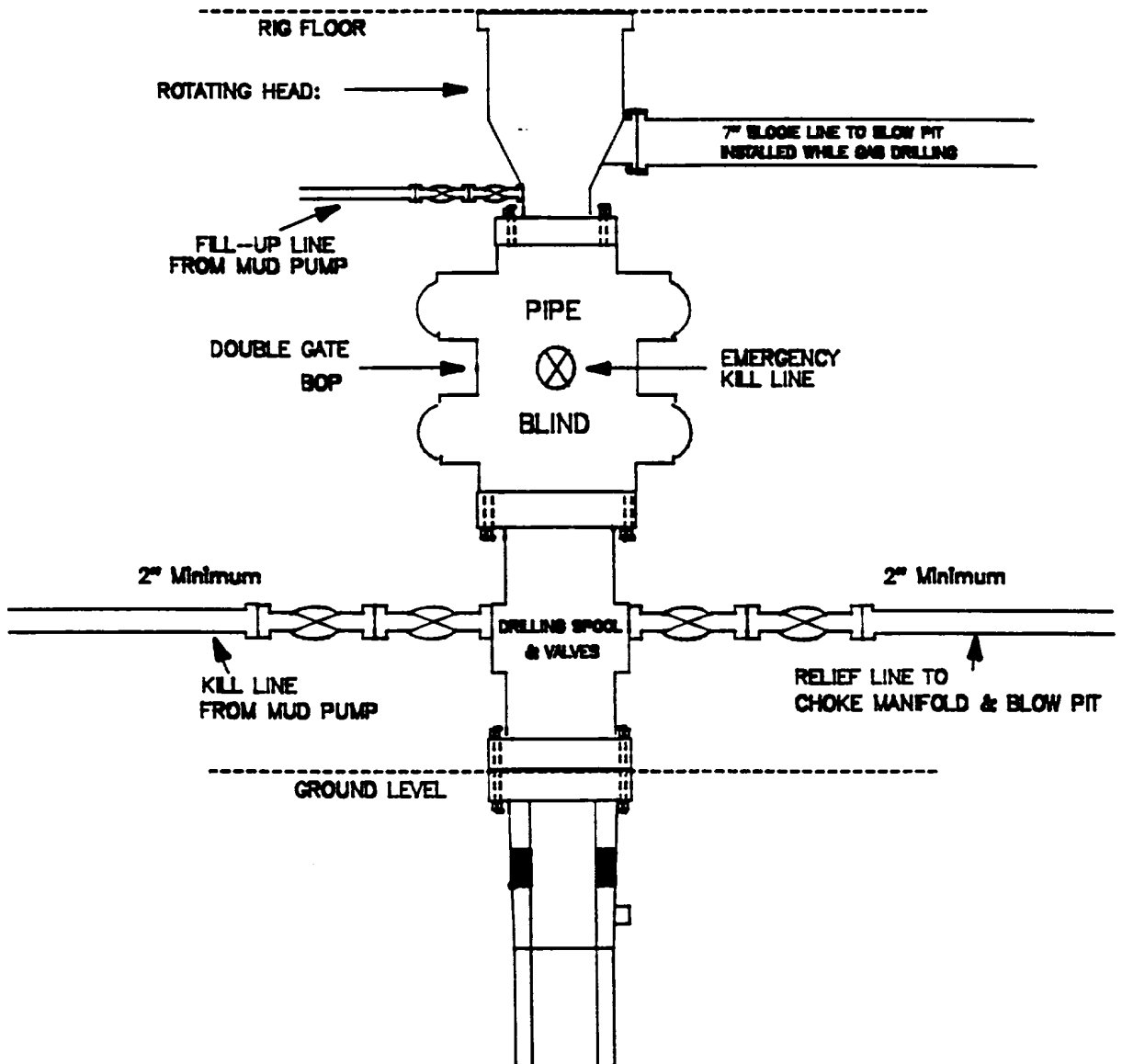
Pipe rams will be actuated to least once each day and blind rams actuated once each trip to test proper functioning. An upper kelly cock valve with handle and drill string safety valves to fit each drill string will be maintained and available on the rig floor.

Additional information:

- * The Fruitland Coal and Pictured Cliffs formations will be completed and commingled per New Mexico Oil Conservation Division order.
- * Anticipated pore pressure for the Fruitland is 1130 psi and for the Pictured Cliffs is 1130 psi.
- * This gas is dedicated.
- * The south half of Section 17 is dedicated to the Fruitland Coal and the southwest quarter of the section is dedicated to the Pictured Cliffs.
- * New casing will be utilized.
- * Pipe movement (either rotation or reciprocation) will be done if hole conditions permit.

MERIDIAN OIL INC.

BOP Configuration 2M psi SYSTEM

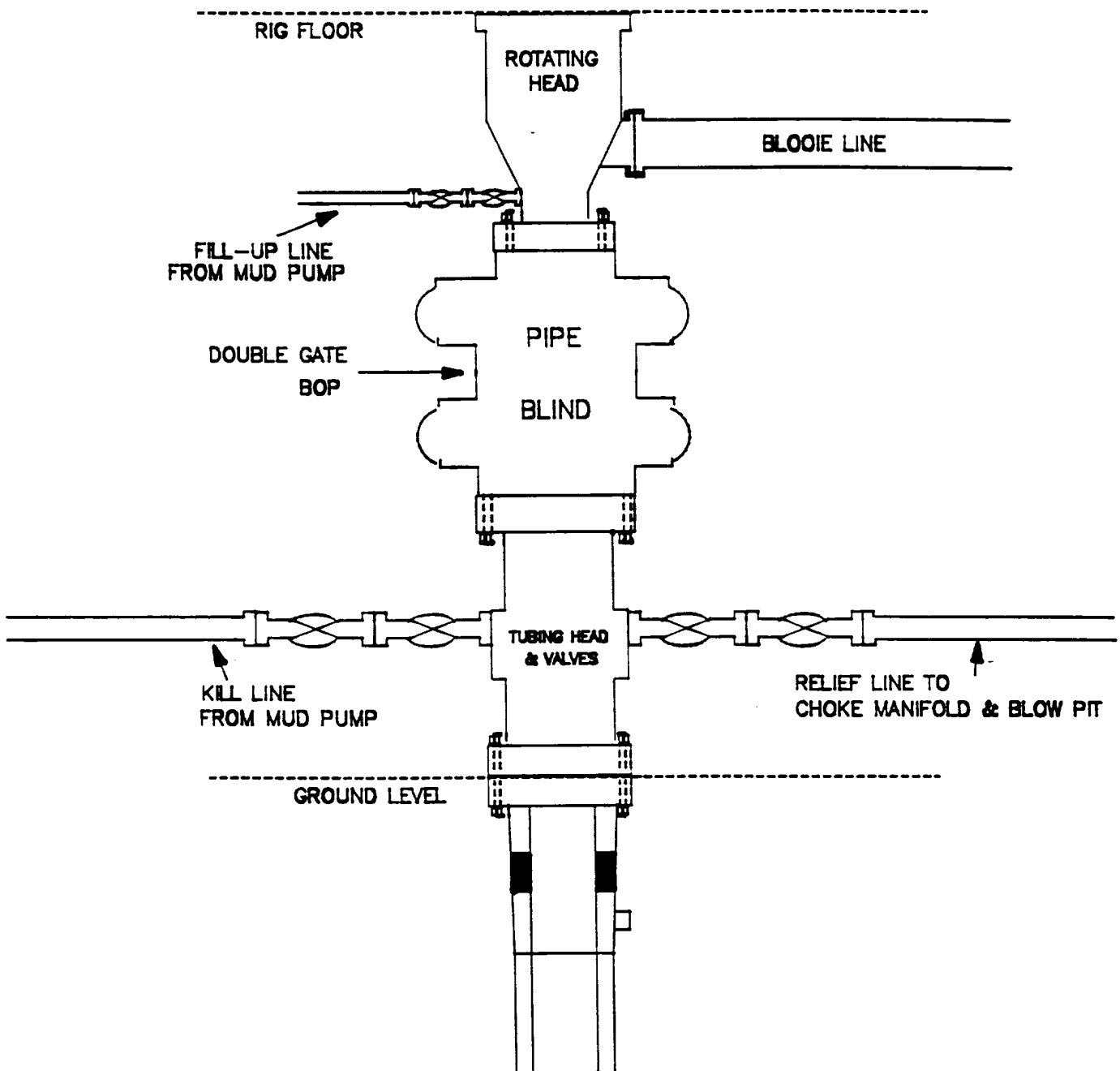


11" Bore, 2000psi minimum working pressure double gate BOP to be equipped with blind and pipe rams. A Schaffer Type 50 or equivalent rotating head to be installed on the top of the BOP. All equipment is 2000psi working pressure/or greater.

Figure #1

MERIDIAN OIL INC.

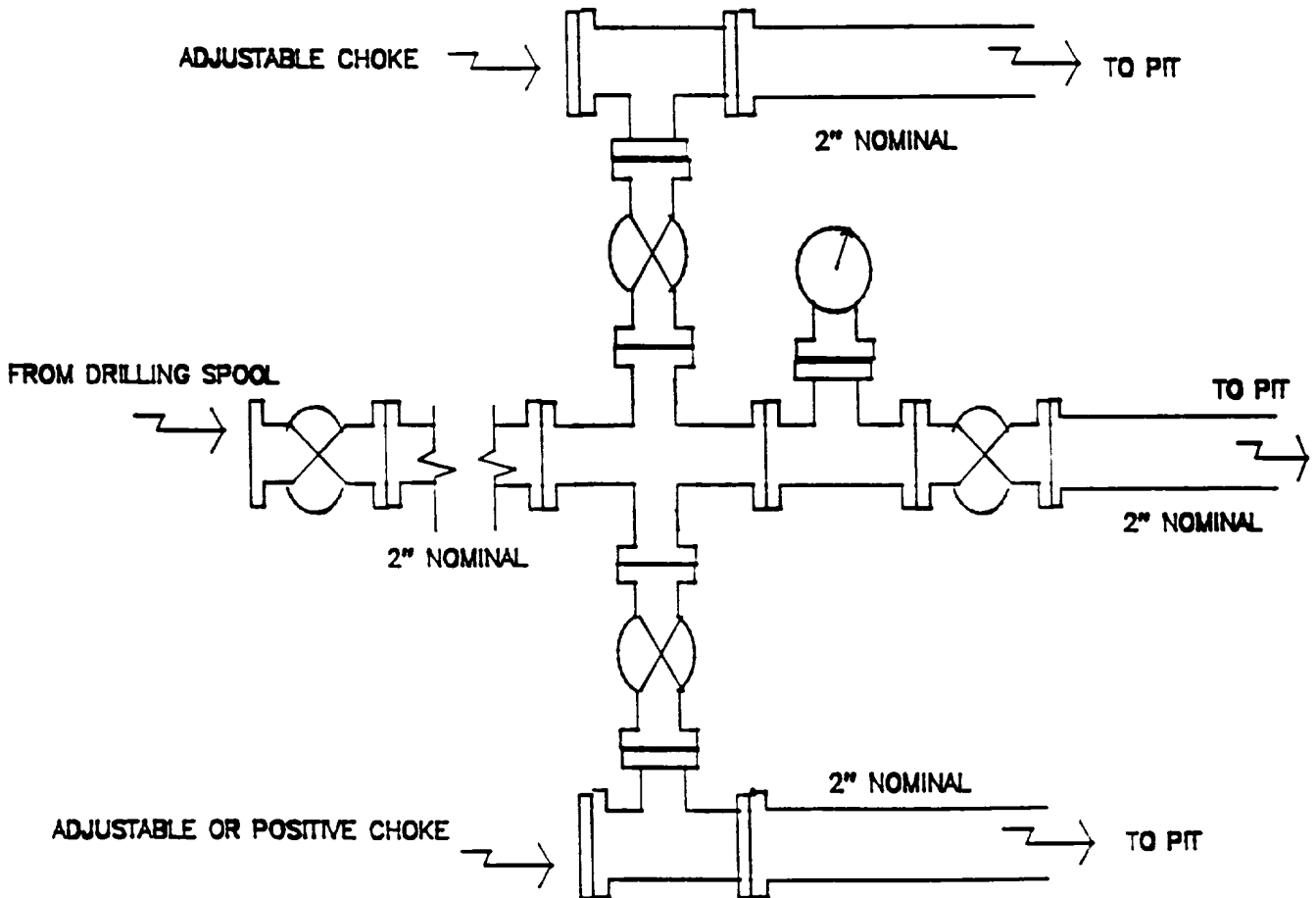
BOP Configuration
2M psi SYSTEM



Minimum BOP installation for Completion operations. 7 1/16" Bore (6" Nominal), 3000psi minimum working pressure double gate BOP to be equipped with blind and pipe rams.

Figure #2

MERIDIAN OIL INC.
Choke Manifold Configuration
2M psi SYSTEM



Minimum choke manifold installation from surface to Total Depth.
2" minimum, 2000psi working pressure equipment with two chokes.

MERIDIAN OIL
San Juan 28-5 Unit #236
Multi-Point Surface Use Plan

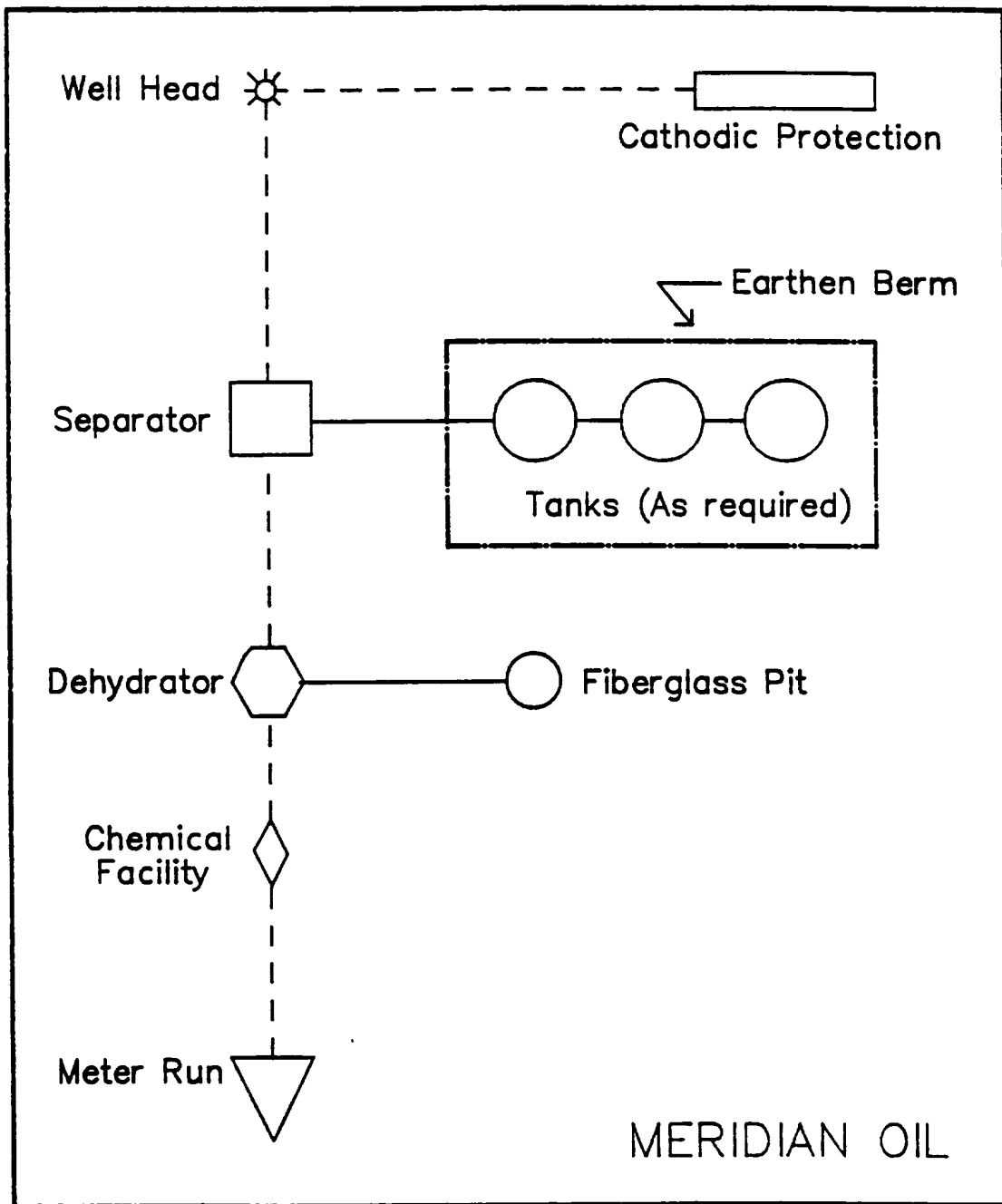
1. **Existing Roads** - Refer to Map No. 1. Existing roads used to access the proposed location will be properly maintained for the duration of the project. Bureau of Land Management right-of-way has been applied for as shown on Map No. 1.
2. **Planned Access Road** - Refer to Map No. 1. None required.
3. **Location of Existing Wells** - Refer to Map No. 1A.
4. **Location of Existing and/or Proposed Facilities if Well is Productive** -
 - a. **On the Well Pad** - Refer to Plat No. 1, anticipated production facilities plat.
 - b. **Off the Well Pad** - Anticipated facilities off the well pad will be applied for as required.
5. **Location and Type of Water Supply** - Water will be hauled by truck for the proposed project and will be obtained from San Juan 27-5 Water Well #1 located NE/4 Section 3, T-27-N, R-5-W, New Mexico.
6. **Source of Construction Materials** - If construction materials are required for the proposed project, such materials will be obtained from a commercial quarry.
7. **Methods of Handling Waste Materials** - All garbage and trash materials will be removed from the site for proper disposal. A portable toilet will be provided for human waste and serviced in a proper manner. If liquids are left in the reserve pit after completion of the project, the pit will be fenced until the liquids have had adequate time to dry. The location clean-up will not take place until such time as the reserve pit can be properly covered over to prevent run-off from carrying waste materials into the watershed. All reserve pits will be lined with 12 mil bio-degradable plastic liner. All earthen pits will be so constructed as to prevent leakage from occurring; no earthen pit will be located on natural drainage. Generation of hazardous waste is not anticipated. Federal regulations will be adhered to regarding handling and disposal of such waste if so generated.
8. **Ancillary Facilities** - None anticipated.
9. **Wellsite Layout** - Refer to the location diagram and to the wellsite cut and fill diagram (Figure No. 4). The blow pit will be constructed with a 2'/160' grade to allow positive drainage to the reserve pit and prevent standing liquids in the blow pit.

10. Plans for Restoration of the Surface - After completion of the proposed project, the location will be cleaned and leveled. The location will be left in such a condition that will enable reseeding operations to be carried out. Seed mixture as designated by the responsible government agency will be used. The reseeding operations will be performed during the time period set forth by the responsible government agency. The permanent location facilities will be painted as designated by the responsible government agency.
11. Surface Ownership - Bureau of Land Management.
12. Other Information - Environmental stipulations as outlined by the responsible government agency will be adhered to. Refer to the archaeological report for a description of the topography, flora, fauna, soil characteristics, dwellings, historical and cultural sites.
13. Operator's Representative and Certification - Meridian Oil Regional Drilling Manager, Post Office Box 4289, Farmington, NM 87499, telephone (505) 326-9700. I hereby certify that I, or persons under my direct supervision, have inspected the proposed drill site and access route; that I am familiar with the conditions which presently exist; that the statements made in this plan, are to the best of my knowledge, true and correct; and that the work associated with the operations proposed herein will be performed by Meridian Oil Inc. and its contractors and subcontractors in conformity with this plan and the terms and conditions under which it is approved.


Regional Drilling Engineer

10/12/93
Date

Well Pad Boundary

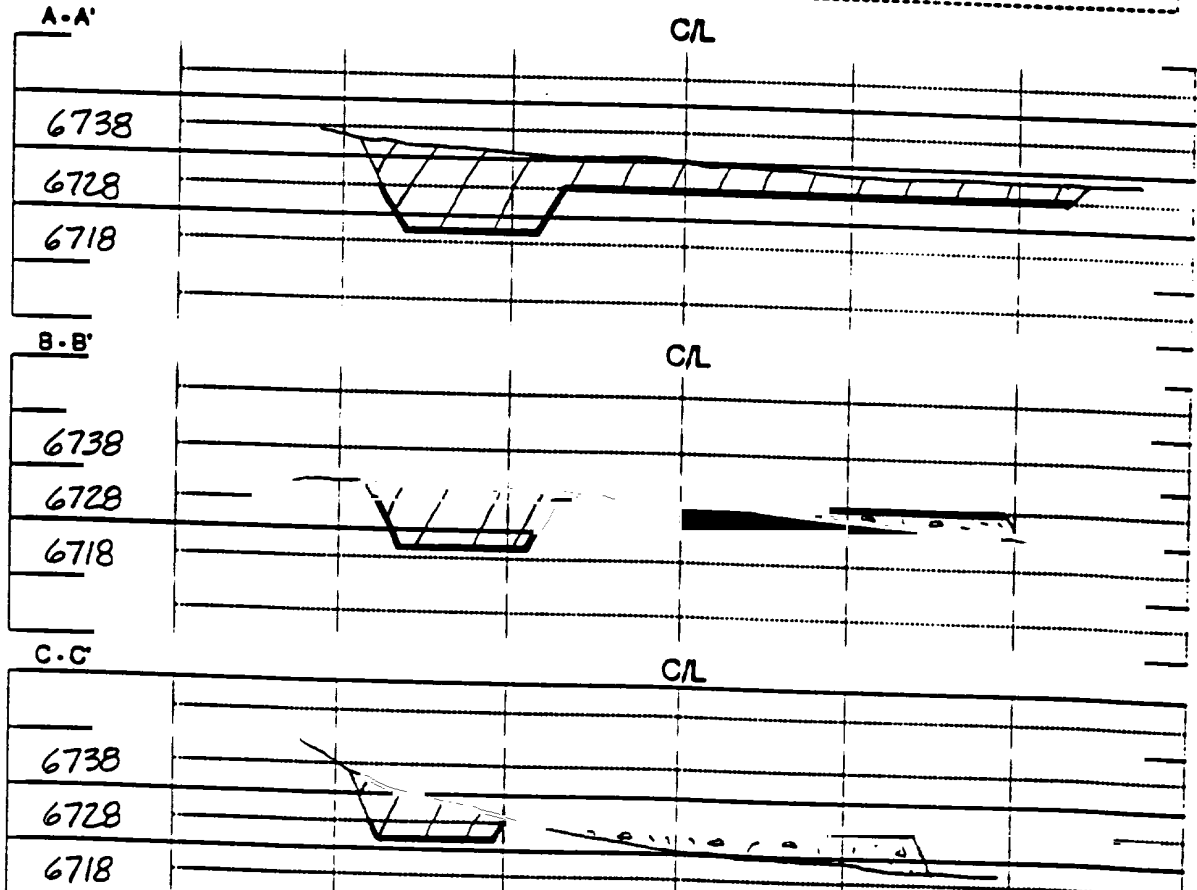
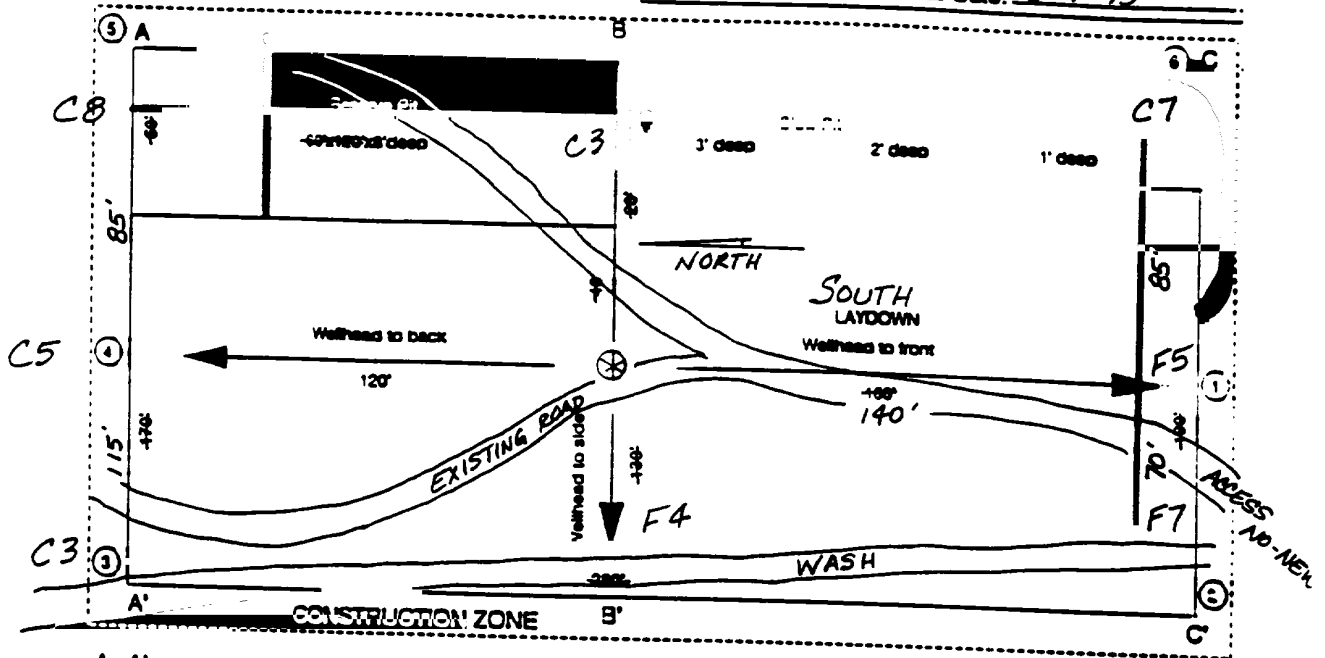


ANTICIPATED
PRODUCTION FACILITIES
FOR A
FRUITLAND COAL/PICTURED CLIFFS COMMINGLED WELL

MERIDIAN OIL

Plat 2

Name: MOI, SAN JUAN 28-5 UNIT # 236
 Footage: 285' FSL, 955' FWL
 Sec 26 T. 28 N.R. 5 W NMPM
 Co. RIO ARRIBA St. N.M.
 Elevation: 6728' Date: 3-9-93



Schedule to Accompany
District Office
State License - 4 copies
Fee License - 3 copies

State of New Mexico
Energy, Minerals and Natural Resources Department

Form C-182
Revised 1-1-89

OIL CONSERVATION DIVISION

P.O. Box 2088

Santa Fe, New Mexico 87504-2088

DISTRICT I

P.O. Box 1983, Hobbs, NM 88240

DISTRICT II

P.O. Drawer 90, Arama, NM 88210

DISTRICT III

1000 Rio Arriba Rd., Aztec, NM 87410

WELL LOCATION AND ACREAGE DEDICATION PLAT

All Dedications must be from the outer boundaries of the section

Operator		Well No.	
Meridian Oil Inc.		236	
San Juan 28-5 Unit			
U.S. Lat.	Section	Township	Range
M	26	28 North	5 West
County		Rio Arriba	
Actual Footage Location of Well:			
285	feet from the	South	line and
955	feet from the	West	line
Ground Level Elev.		Datum	
6728'	Fruitland Coal/Pic.Cliffs	Basin/So.Blanco	320/160

1. Outline the acreage dedicated to the subject well by corner point or bearing marks on the plat below.

2. If more than one lease is dedicated to the well, outline each and identify the ownership thereof (both as to working interest and royalty).

3. If more than one lease of different ownership is dedicated to the well, have the amount of all covenants been considered by communication, common, force-pooling, etc.?

☒ Yes ☐ No If answer is "yes" type of consideration unitization

If answer is "no" list the covenants and their descriptions which have actually been considered. (Use reverse side of this form if necessary).

No acreage will be assigned to the well until all covenants have been considered by communication, common, force-pooling, or otherwise or until a non-considered unit, comprising such interest, has been approved by the Division.

5287.92'

RECEIVED

MAR 07 1994

OIL CON. DIV

DIST. 3

OPERATOR CERTIFICATION

I hereby certify that the information contained herein is true and complete to the best of my knowledge and belief.

Signature

Peggy Bradfield

Printed Name

Regulatory Representative

Position

Meridian Oil Inc.

Company

Date

SURVEYOR CERTIFICATION

I hereby certify that the well location shown on this plat was plotted from field notes actual surveys made by me or under supervision, and that the same is true and correct to the best of my knowledge and belief.

3-9-93

Date Surveyed

Neale W. Edwards

Surveyor of State
Professional Surveyor

9857

SF-079520A

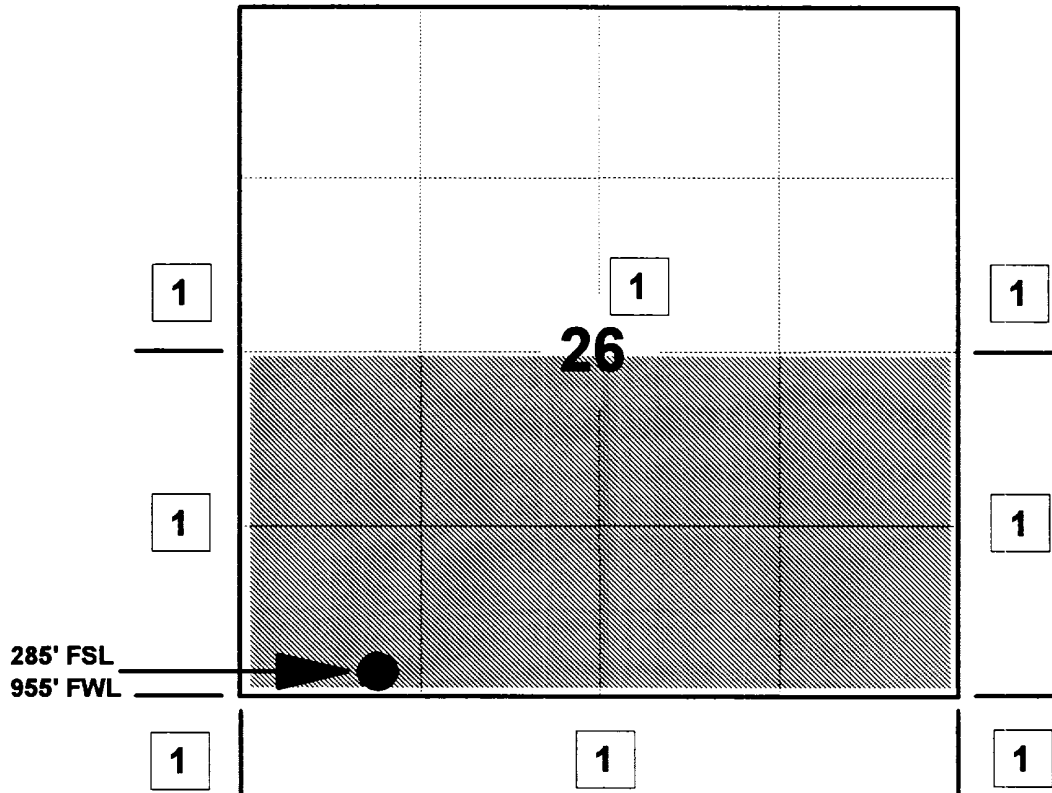
MERIDIAN OIL INC

SAN JUAN 28-5 UNIT #236

OFFSET OPERATOR \ OWNER PLAT

Unorhtodox Fruitland Coal Well Location

Township 28 North, Range 5 West



1) Meridian Oil Inc

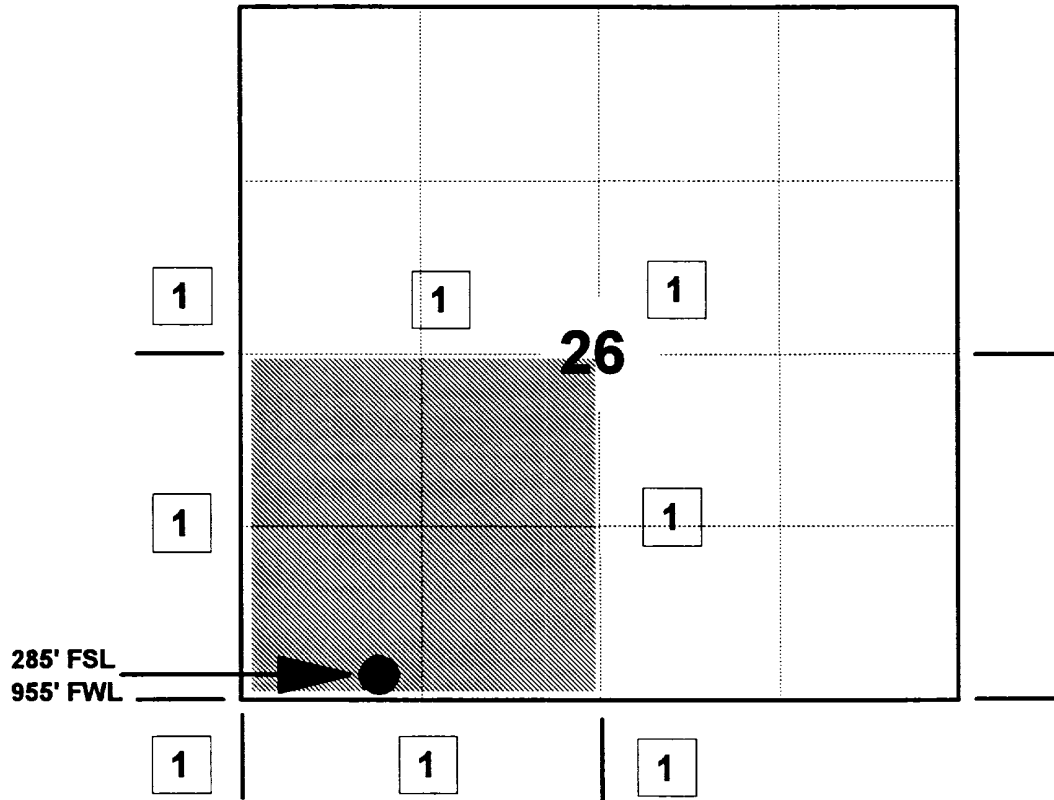
MERIDIAN OIL INC

SAN JUAN 28-5 UNIT #236

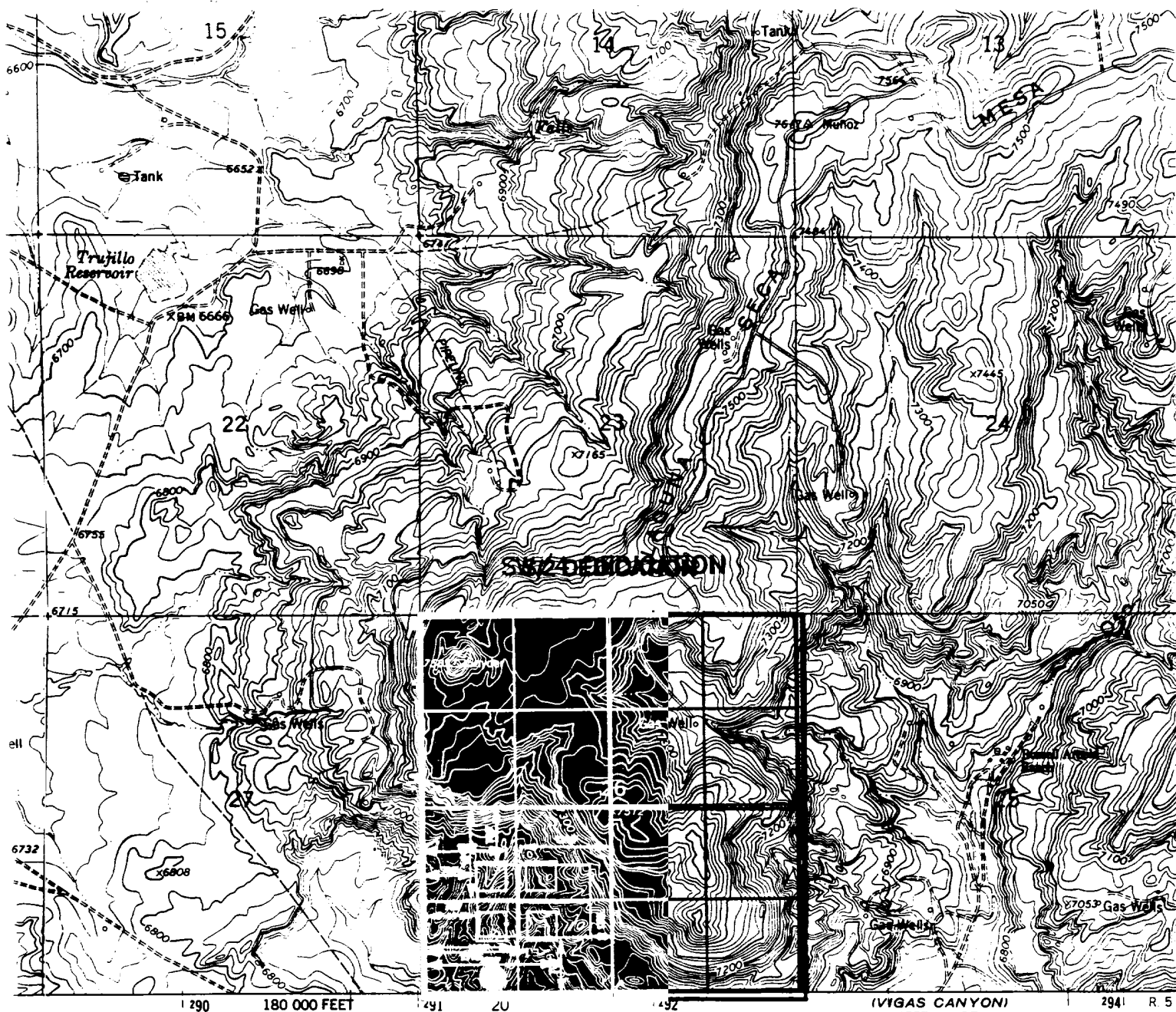
OFFSET OPERATOR \ OWNER PLAT

Unorhtodox Pictured Cliffs Well Location

Township 28 North, Range 5 West



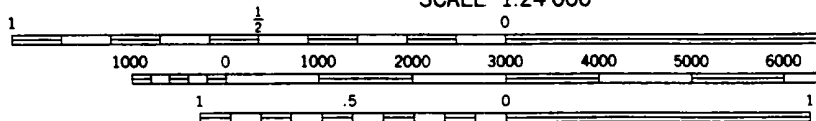
1) Meridian Oil Inc



gical Survey

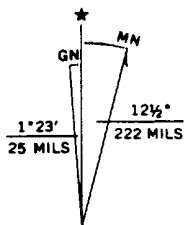
STANDARD SECTION

SCALE 1:24 000



CONTOUR INTERVAL 20 FEET
NATIONAL GEODETIC VERTICAL DATUM OF 1929

central zone



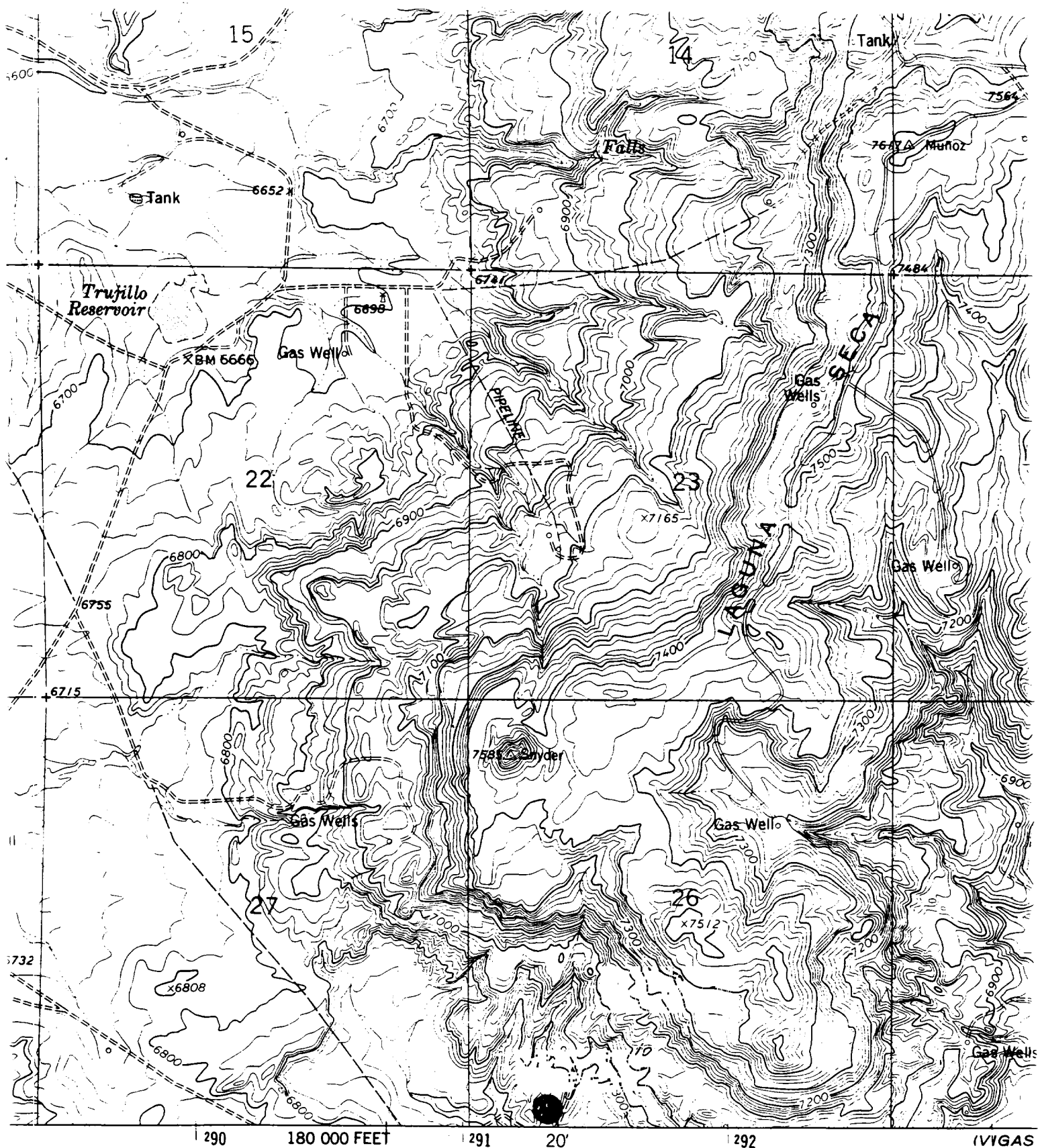
UTM GRID AND 1982 MAGNETIC NORTH
DECLINATION AT CENTER OF SHEET

ata

To place on the predicted North American Datum 1983
move the projection lines 2 meters north and
54 meters east as shown by dashed corner ticks

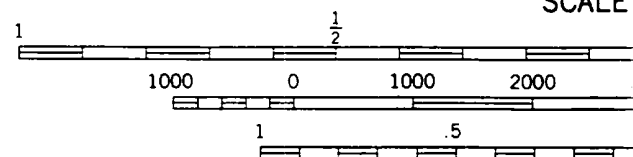
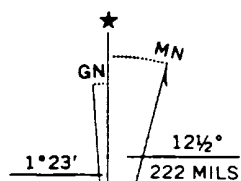
THIS MAP COMPLIES WITH NATIONAL MAP ACCURACY STANDARDS
FOR SALE BY U. S. GEOLOGICAL SURVEY, DENVER, COLORADO 80225, OR REST
A FOLDER DESCRIBING TOPOGRAPHIC MAPS AND SYMBOLS IS AVAILABLE ON

MERIDIAN OIL



gical Survey

central zone



SCALE