

UNITED STATES
DEPARTMENT OF THE INTERIOR
BUREAU OF LAND MANAGEMENT

Form approved.
Budget Bureau No.1004-0136
Expires: December 31, 1991

APPLICATION FOR PERMIT TO DRILL OR DEEPEN

1a. TYPE OF WORK

b. TYPE OF WELL
OIL WELL ☐ GAS WELL ☒ OTHER ☐

DRILL ☐

DEEPEN ☐

SINGLE ZONE ☐

MULTIPLE ZONE ☒

2. NAME OF OPERATOR

Amoco Production Company

Attention:

Julie L. Acevedo

3. ADDRESS AND TELEPHONE NO.

P.O. Box 800, Denver, Colorado 80201

4. LOCATION OF WELL (Report location clearly and in accordance with any State requirements. *)

At surface

1490 FNL

1800 FWL

A: proposed prod. zone

14. DISTANCE IN MILES AND DIRECTION FROM NEAREST TOWN OR POST OFFICE*

73 miles from Ogden, NM

15. DISTANCE FROM PROPOSED LOCATION TO NEAREST PROPERTY OR LEASE LINE, FT.
(Also to nearest drilg. unit line, if any)

18. DISTANCE FROM PROPOSED LOCATION TO NEAREST WELL, DRILLING, COMPLETED, OR APPLIED FOR, ON THIS LEASE, FT.

21. ELEVATIONS (Show whether DF, RT, GR., etc.)

6807' GR

23.

PROPOSED CASING AND CEMENTING PROGRAM

SIZE OF HOLE	GRADE, SIZE OF CASING	WEIGHT PER FOOT	SETTING DEPTH	QUANTITY OF CEMENT
14 3/4"	11 3/4"	47#	250'	245 of CI B W/2% CaCl2 (Cement to surface)
10 5/8"	8 5/8"	24#	3818'	2139' of CI B (Cement to surface)
7 7/8"	5 1/2"	15.5#	8017'	1244 of CL B (Cint to surface)

Notice of Staking was submitted on 2/24/94.

Lease Description: T28N-R7W

Sec 18: E/2NW/4

Sec 22: SW/4,S/2NW/4

RECEIVED
APR 28 1994
OIL CON. DIV.
DIST. 3

IN ABOVE SPACE DESCRIBE PROPOSED PROGRAM: If proposal is to deepen, give data on present productive zone and proposed new productive zone. If proposal is to drill or deepen directionally, give pertinent data on subsurface locations and measured and true vertical depths. Give blowout preventer program, if any.

24.

SIGNED

TITLE Sr. Staff Assistant

DATE

02-24-1994

(This space for Federal or State office use)

PERMIT NO.

APPROVAL DATE

Application approval does not warrant or certify that the applicant holds legal or equitable title to those rights in the subject lease which would entitle the applicant to conduct operations thereon.

CONDITIONS OF APPROVAL, IF ANY:

APPROVED BY

TITLE

AMOCO

APPROVED
AS AMENDED

APR 25 1994

DATE

DISTRICT MANAGER

*See Instructions On Reverse Side

Title 18 U.S.C. Section 1001, makes it a crime for any person knowingly and willfully to make to any department or agency of the United States any false, fictitious or fraudulent statements or representations as to any matter within its jurisdiction.

Submit to Appropriate
District Office
State Lease - 4 copies
Fee Lease - 3 copies

State of New Mexico
Energy, Minerals and Natural Resources Department

Form C-102
Revised 1-1-89

OIL CONSERVATION DIVISION

P.O. Box 2088
Santa Fe, New Mexico 87504-2088

DISTRICT I
P.O. Box 1980, Hobbs, NM 88240

DISTRICT II
P.O. Drawer DD, Artesia, NM 88210

DISTRICT III
1000 Rio Brazos Rd., Artesia, NM 87410

WELL LOCATION AND ACREAGE DEDICATION PLAT
All Distances must be from the outer boundaries of the section

54 MAR -2 PM 12:52

070 FARMINGTON, NM

Operator AMOCO PRODUCTION COMPANY			Lease San Juan 28-7		Well No. #220M
Unit Letter F	Section 22	Township 28 NORTH	Range 7 WEST	County RIO ARriba	NMPM
Actual Footage Location of Well: 1490 feet from the NORTH line and 1800 feet from the WEST line					
Ground level Elev. 4807	Producing Formation Basin Dakota		Pool Basin Dakota		Dedicated Acreage: 142.320 Acres

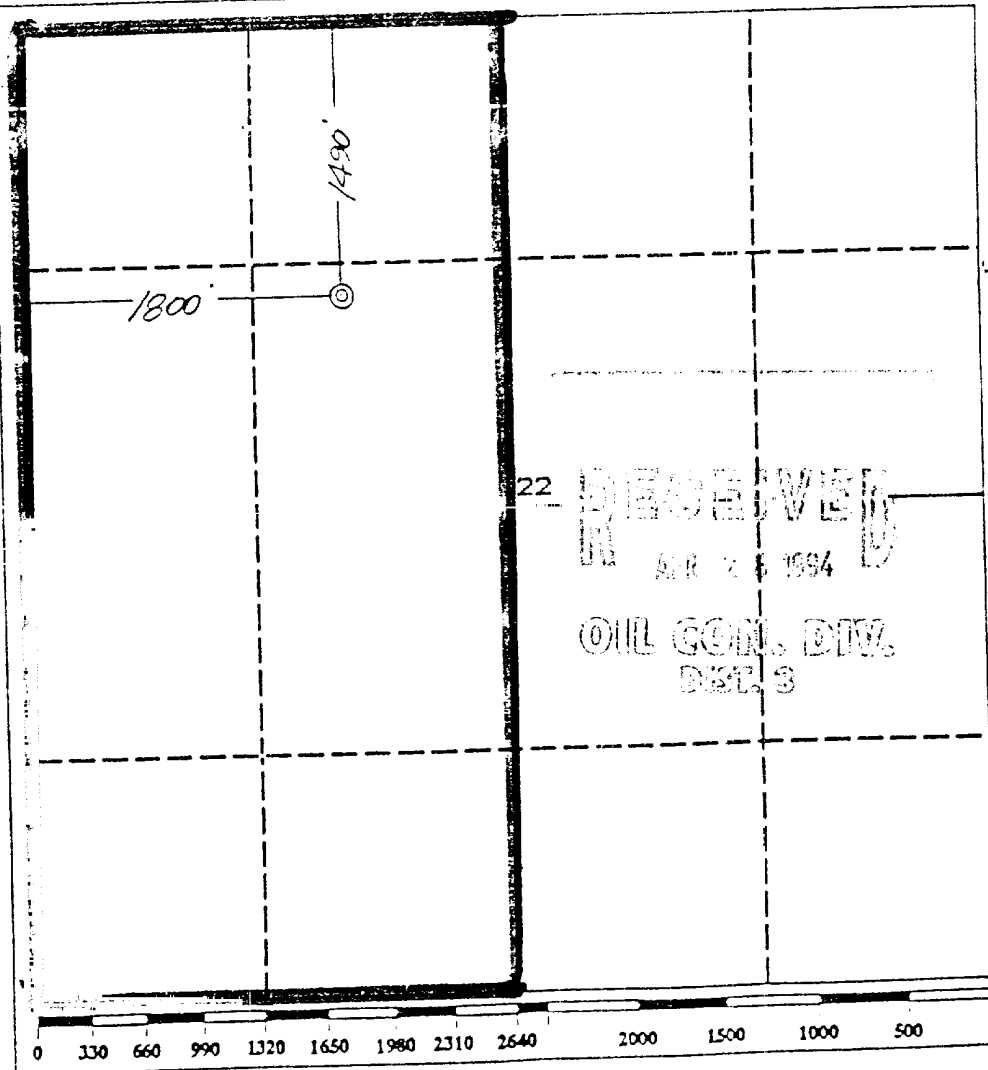
1. Outline the acreage dedicated to the subject well by colored pencil or hatchure marks on the plat below.

2. If more than one lease is dedicated to the well, outline each and identify the ownership thereof (both as to working interest and royalty).

3. If more than one lease of different ownership is dedicated to the well, have the interest of all owners been consolidated by communitization, unitization, force-pooling, etc.?

☐ Yes ☐ No If answer is "yes" type of consolidation _____
If answer is "no" list the owners and tract descriptions which have actually been consolidated. (Use reverse side of this form if necessary).

No allowable will be assigned to the well until all interests have been consolidated (by communitization, unitization, forced-pooling, or otherwise) or until a well-spacing unit, eliminating such interest, has been approved by the Division.



OPERATOR CERTIFICATION

I hereby certify that the information contained herein is true and complete to the best of my knowledge and belief.

Signature
Julie L. Acevedo
Printed Name
Julie L. Acevedo
Position
Senior Staff Assistant
Company
Amoco Production Company
Date
February 24, 1994

SURVEYOR CERTIFICATION

I hereby certify that the well location shown on this plat was plotted from field notes or actual surveys made by me or under my supervision, and that the same is true and correct to the best of my knowledge and belief.

Date Surveyed
October 15, 1993

Signature & Seal of Professional Surveyor
GARY D. VANN
Registered Professional Land Surveyor
7016

Submit to Appropriate
District Office
State Lease - 4 copies
Fee Lease - 3 copies

State of New Mexico
Energy, Minerals and Natural Resources Department

Form C-102
Revised 1-1-89

OIL CONSERVATION DIVISION

P.O. Box 2088
Santa Fe, New Mexico 87504-2088

DISTRICT I
P.O. Box 1980, Hobbs, NM 88240

DISTRICT II
P.O. Drawer DD, Artesia, NM 88210

DISTRICT III
1001 Rio Brazos Rd., Artesia, NM 87410

WELL LOCATION AND ACREAGE DEDICATION PLAT

All Distances must be from the outer boundaries of the section

Operator AMOCO PRODUCTION COMPANY			Lease San Juan 28-7		Well No. 2220M
Unit Letter F	Section 22	Township 28 NORTH	Range 7 WEST	County RIO ARriba	
Actual Footage Location of Well: 1490 feet from the NORTH line and 1800 feet from the WEST line					
Ground level Elev. 6807	Producing Formation Mesaverde		Pool Blanco Mesaverde		Dedicated Acreage: 1/2 320 Acres

1. Outline the acreage dedicated to the subject well by colored pencil or hatchure marks on the plat below.

2. If more than one lease is dedicated to the well, outline each and identify the ownership thereof (both as to working interest and royalty).

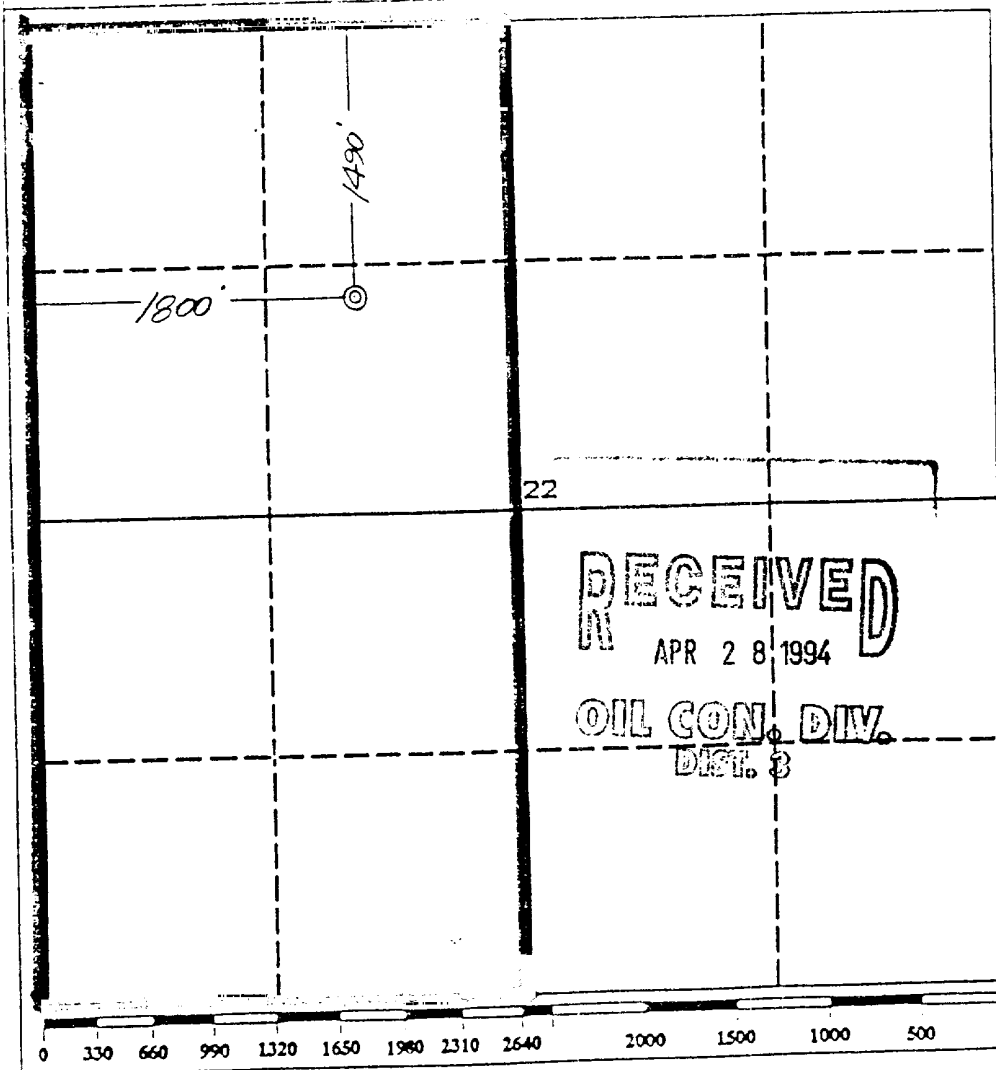
3. If more than one lease of different ownership is dedicated to the well, have the interest of all owners been consolidated by communization, unitization, force-pooling, etc.?

☐ Yes ☐ No

If answer is "yes" type of consolidation

If answer is "no" list the owners and tract descriptions which have actually been consolidated. (Use reverse side of this form if necessary.)

No allowable will be assigned to the well until all interests have been consolidated (by communization, unitization, forced-pooling, or otherwise) or until a non-standard unit, eliminating such interest, has been approved by the Division.



OPERATOR CERTIFICATION

I hereby certify that the information contained herein is true and complete to the best of my knowledge and belief.

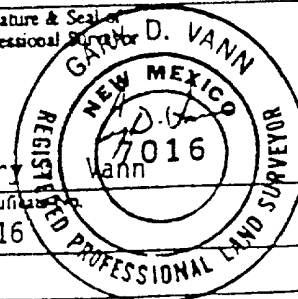
Signature
Julie L. Acevedo
Printed Name
Julie L. Acevedo
Position
Senior Staff Assistant
Company
Amoco Production Company
Date
February 24, 1994

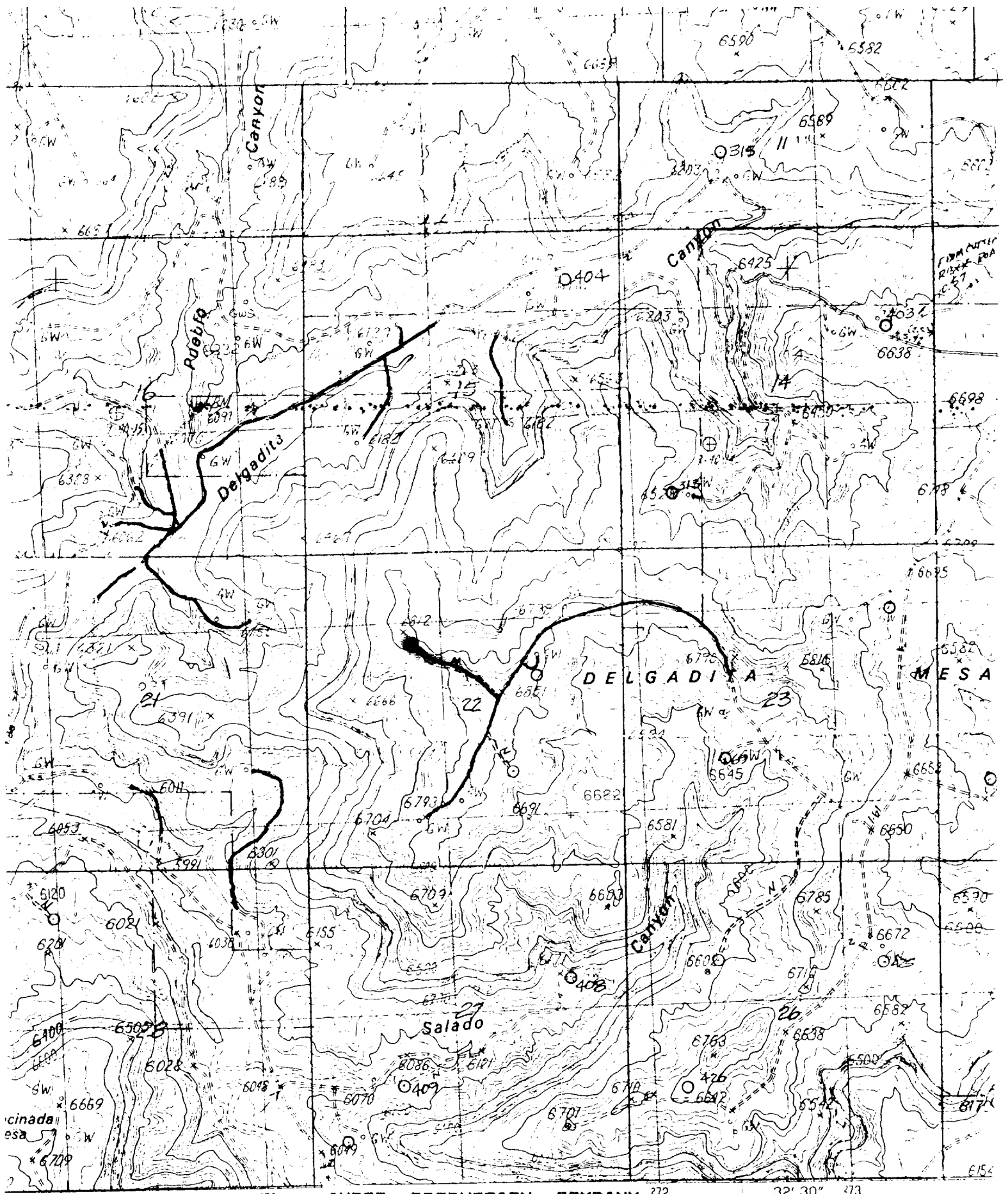
SURVEYOR CERTIFICATION

I hereby certify that the well location shown on this plat was plotted from field notes of actual surveys made by me or under my supervision, and that the same is true and correct to the best of my knowledge and belief.

Date Surveyed
October 15, 1993

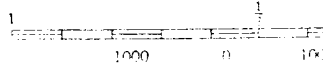
Signature & Seal of
Professional Surveyor
GARY D. VANN
7016
Certification
7016



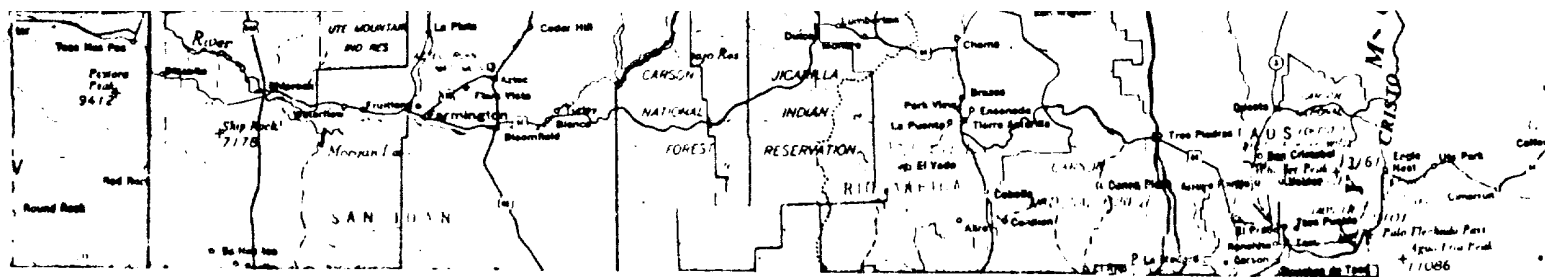


AMOCO PRODUCTION COMPANY
 REF. # 10129
 1490' F/NL 1800' F/WL
 SEC. 22, T28N, R7W, NMMP
 RIO ARRIBA COUNTY, NM

272 32' 30" 273
 NEW ROAD
 EXISTING ROADS



7000 FEET



REF. # 10129

1890' F/NL 1800' F/WL

SEC. 22, T28N, R7W, NMPM

RAIL POINT: 186 miles from Farmington, NM

MUD POINT: 43 miles from Farmington, NM

CEMENT POINT: 47 miles from Farmington, NM

