

UNITED STATES
DEPARTMENT OF THE INTERIOR
BUREAU OF LAND MANAGEMENT

FORM APPROVED
OMB NO. 1004-0136
Expires February 28, 1995

APPLICATION FOR PERMIT TO DRILL OR DEEPEN

1a. TYPE OF WORK

DRILL ☒

DEEPEN ☐

b. TYPE OF WELL

OIL WELL ☐

GAS WELL ☒

OTHER

SINGLE ZONE ☒

MULTIPLE ZONE ☐

2. NAME OF OPERATOR

Conoco Inc.

3. ADDRESS AND TELEPHONE NO.

10 Desta Drive, Suite 649W, Midland, TX 79705; 915/686-5515

4. LOCATION OF WELL (Report location clearly and in accordance with any State requirements*)

At surface

940' FSL & 740' FEL

At proposed prod. Zone

940' FSL & 740' FEL

14. DISTANCE IN MILES AND DIRECTION FROM NEAREST TOWN OR POST OFFICE*

17. DISTANCE FROM PROPOSED*
LOCATION TO NEAREST
PROPERTY OR LEASE LINE, FT.
(Also to nearest drg. Unit line, if any)

6. NO. OF ACRES IN LEASE

17. NO. OF ACRES ASSIGNED
TO THIS WELL

339.73

18. DISTANCE FROM PROPOSED LOCATION*
TO NEAREST WELL, DRILLING, COMPLETED,
OR APPLIED FOR, ON THIS LEASE, FT.

9. PROPOSED DEPTH
7155'

20. ROTARY OR CABLE TOOLS
Rotary

21. ELEVATIONS (Show whether DF, RT, GR, etc.)

6187' -

22. APPROX. DATE WORK WILL START*
1/01/00

PROPOSED CASING AND CEMENTING PROGRAM

SIZE OF HOLE	GRADE, SIZE OF CASING	WEIGHT PER FOOT	SETTING DEPTH	QUANTITY OF CEMENT
12 1/2"	J-55; 9 5/8"	36#	285'	138 sxs, circ. -
8 3/4"	J-55; 7"	20#	3130'	458 sxs, circ. -
6 1/4"	J-55, 4 1/2"	10.5#	7155' -	TOC @ 3030' sxs, circ. -

It is proposed to drill a vertical wellbore in the Basin Dakota. An NOS was filed 05/26/00. The well will be drilled and equipped according to the following additional attachments:

1. Well Location & Acreage Dedication Plat (C-102).
2. Proposed Well Plan Outline.
3. Cementing Plan.
4. Blowout Preventer Hookup.
5. Surface Use Plan including temporary pipeline tie specifications.
6. Production Facility Layout.

This action is subject to technical and procedural review pursuant to 43 CFR 3165.3 and appeal pursuant to 43 CFR 3165.4.

APD/ROW

DRILLING OPERATIONS AUTHORIZED ARE
SUBJECT TO COMPLIANCE WITH ATTACHED
"GENERAL REQUIREMENTS"

This application includes ROW's for the well pad, cathodic protection, and pipeline. The pipe-wall thickness is .156 and the pipe-wall strength is 42,000# yield.

IN ABOVE SPACE DESCRIBE PROPOSED PROGRAM: If proposal is to deepen give data on present productive zone and proposed new productive zone. If proposal is to drill or deepen directionally, give pertinent data on subsurface locations and measured and true vertical depths. Give blowout preventer program, if any.

SIGNED

Kirby Southall

TITLE Analyst

DATE 12/01/00

(This space for Federal or State office Use)

PERMIT NO.

APPROVAL DATE

Application approval does not warrant or certify that the applicant holds legal or equitable title to those rights in the subject lease which would entitle the applicant to conduct operations thereon.

CONDITIONS OF APPROVAL, IF ANY:

APPROVED BY

Lee Otteni (SA)

TITLE

DATE

4/6/01

*See Instructions On Reverse Side

Title 18 U.S.C. Section 1001, makes it a crime for any person knowingly and willfully to make to any department or agency of the United States any false, fictitious or fraudulent statements or representations as to any matter within its jurisdiction.

HOLD C104 FOR *Cancellation of*
Permit No. 243F

District I
PO Box 1980, Hobbs, NM 88241-1980

District II
PO Drawer 00, Artesia, NM 88211-0719

District III
1000 Rio Brazos Rd., Aztec, NM 87410

District IV
PO Box 2088, Santa Fe, NM 87504-2088

State of New Mexico
Energy, Minerals & Natural Resources Department

OIL CONSERVATION DIVISION
PO Box 2088
Santa Fe, NM 87504-2088

Form C-102
Revised February 21, 1994

Instructions on back
Submit to Appropriate District Office
State Lease - 4 Copies
Fee Lease - 3 Copies

200 DEC -4 PM 12: 15 AMENDED REPORT

070 FARMINGTON, NM

WELL LOCATION AND ACREAGE DEDICATION PLAT

*API Number 30-039-26590		*Pool Code 71599	*Pool Name BASIN DAKOTA
*Property Code 016608	*Property Name SAN JUAN 28-7 UNIT		*Well Number 243M
*OGRIID No. 005073	*Operator Name CONOCO, INC.		*Elevation 6187'

10 Surface Location

UL or lot no. P	Section 31	Township 28N	Range 7W	Lot Idn	Feet from the 940	North/South line SOUTH	Feet from the 740	East/West line EAST	County RIO ARriba
---------------------------	----------------------	------------------------	--------------------	---------	-----------------------------	----------------------------------	-----------------------------	-------------------------------	-----------------------------

11 Bottom Hole Location If Different From Surface

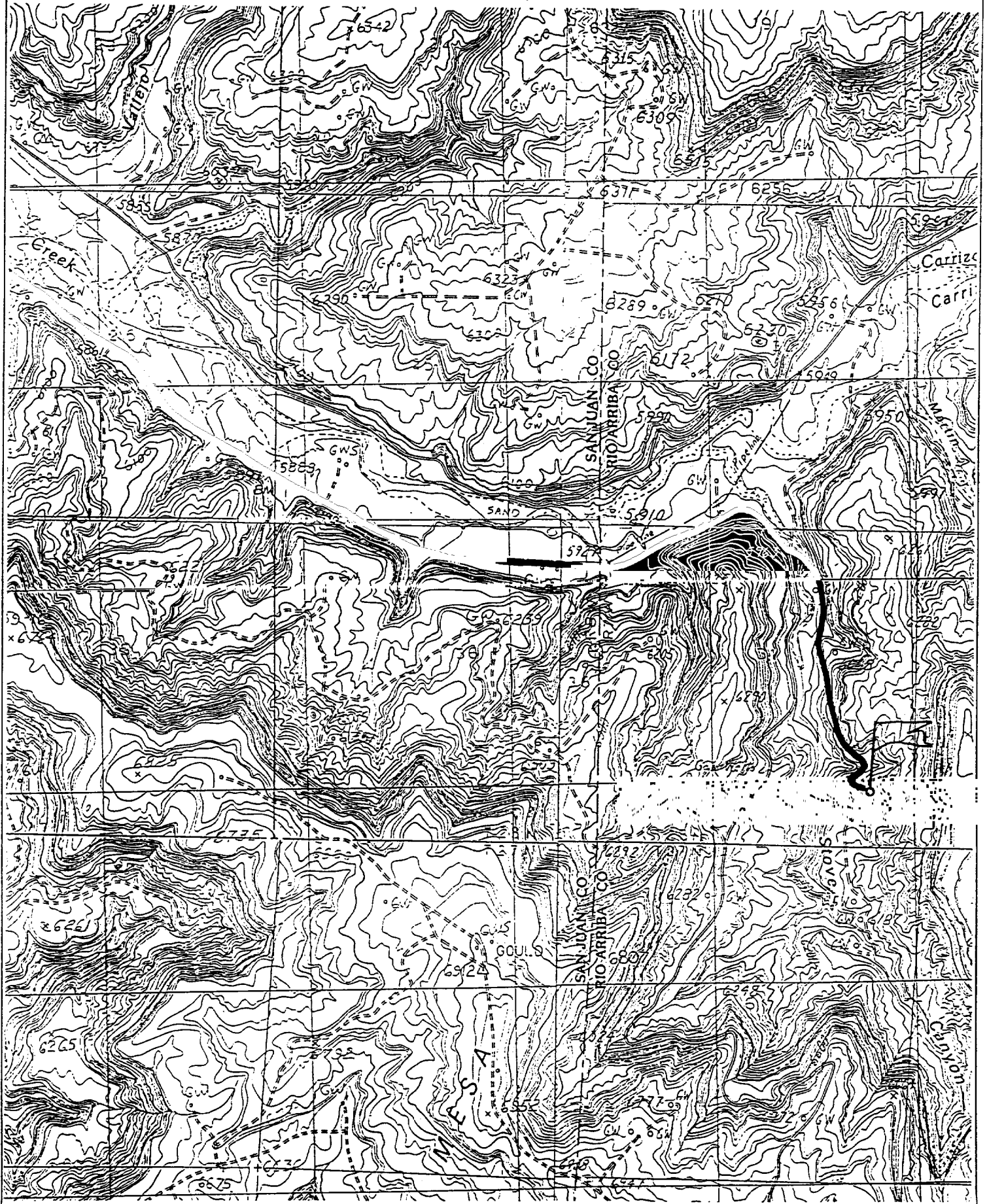
UL or lot no.	Section	Township	Range	Lot Idn	Feet from the	North/South line	Feet from the	East/West line	County
---------------	---------	----------	-------	---------	---------------	------------------	---------------	----------------	--------

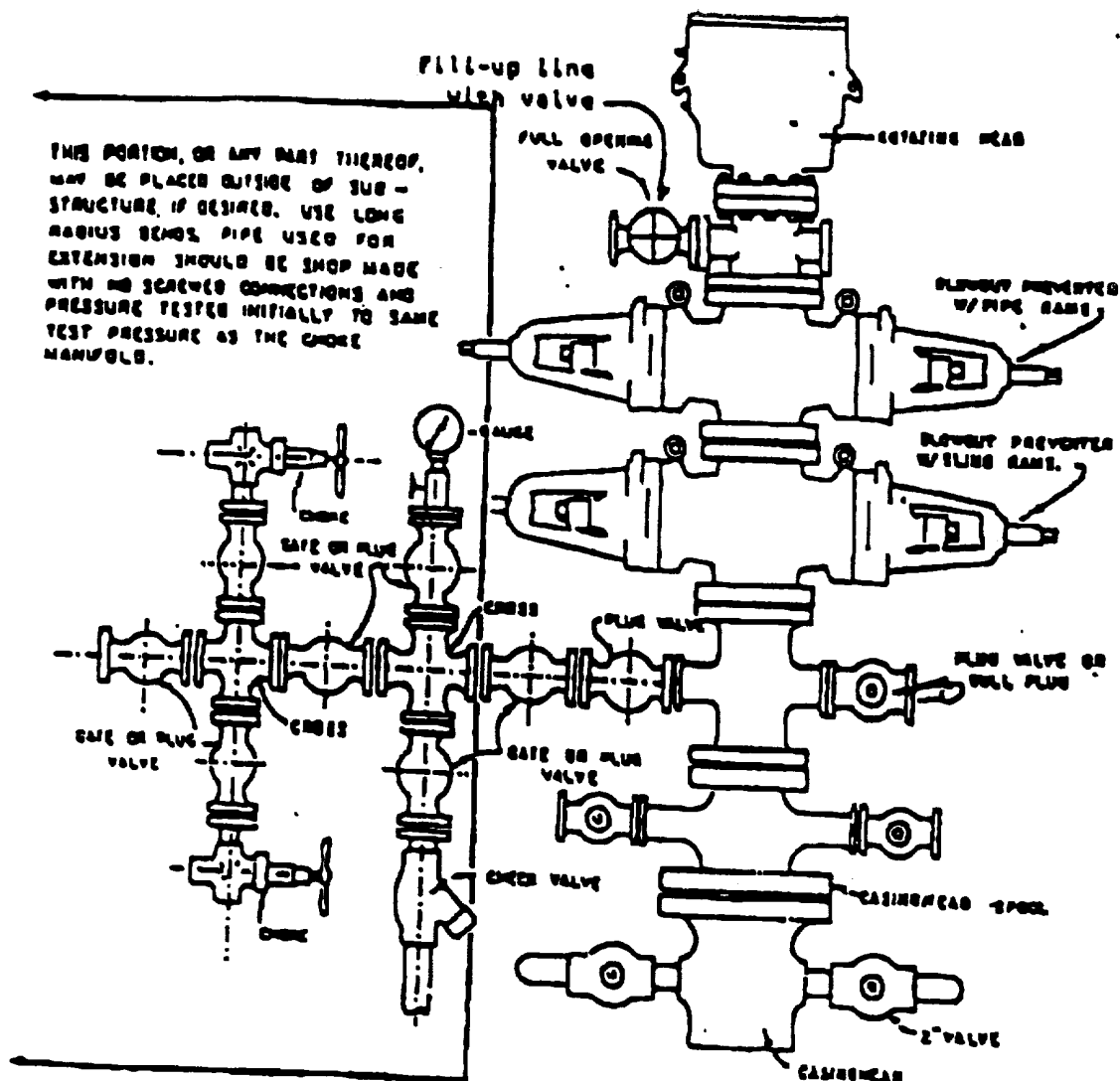
12 Dedicated Acres 339.73	13 Joint or Infill	14 Consolidation Code	15 Order No. R-2948
-------------------------------------	--------------------	-----------------------	-------------------------------

NO ALLOWABLE WILL BE ASSIGNED TO THIS COMPLETION UNTIL ALL INTERESTS HAVE BEEN CONSOLIDATED OR A NON-STANDARD UNIT HAS BEEN APPROVED BY THE DIVISION

1203.18'	1320.00'	2640.00'	17 OPERATOR CERTIFICATION I hereby certify that the information contained herein is true and complete to the best of my knowledge and belief. JoAnn Johnson Signature JoAnn Johnson Printed Name Sr. Property Analyst Title 11/20/00 Date
LOT 1			18 SURVEYOR CERTIFICATION I hereby certify that the well location shown on this plat was plotted from field notes of actual surveys made by me or under my supervision, and that the same is true and correct to the best of my belief. JUNE 13, 2000 Date of Survey NEALE C. EDWARDS Signature and Seal of Professional Surveyor 6857 Certificate Number
LOT 2 243F			
LOT 3			
LOT 4	LOT 5	LOT 6	
1227.60'	1320.00'	2640.00'	

CONOCO, INC. SAN JUAN 28-7 UNIT #243M
940' FSL & 740' FEL, SECTION 31, T28N, R7W, N.M.P.M.
RIO ARRIBA COUNTY, NEW MEXICO





BLOWOUT PREVENTER HOOKUP

Drilling contractors used in the San Juan Basing supply 3000 psi equipment, but cannot provide annular preventors because of sub-structure limitations. Maximum anticipated surface pressures for this well will not exceed the working pressure of the proposed BOP system. Please see the attached BOP diagram details 2000 psi equipment according to Onshore Order No. 2 even though the deletion of the annular preventor and fulfills your requirements (note diagram No. 1). In addition, the following equipment will comprise the 2000 psi system:

1. Two rams with one blind and one pipe ram.
2. Kill line (2 inch maximum).
3. One kill line valve.
4. One choke line valve.
5. Two chokes (reference diagram No. 1).
6. Upper kelly cock valve with handle.
7. Safety valve and subs to fit all drill strings in use.
8. Two-inch minimum choke line.
9. Pressure gauge on choke manifold.
10. Fill-up line above the upper most preventor.
11. Rotating head.

Cathodic Protection System Description

Anode Bed Type	Deep Well	
Hole Size	8"	
Hole Depth	200' - 500'	As required to place anodes below moisture and in low resistance strata.
Surface Casing	8" Diam., \geq 20' Length. Cemented In Annular Space	When needed, casing will be installed at an adequate depth to control ground water flow. Casing will extend a minimum of 2' above grade, be surrounded by a concrete pad, and sealed with a PVC cap. Steel casing will be substituted when boulders are encountered.
Vent Pipe	1" Diam. PVC	Vent pipe will extend from bottom of hole, through top of casing cap, and sealed with a 1" perforated PVC cap.
Type Of Anodes	Cast Iron Or Graphite	
Number Of Anodes	8 - 20	Sufficient quantity to achieve a total anode bed resistance of < 1 ohm and a design life \geq 20 years.
Anode Bed Backfill	Loresco SW Calcined Petroleum Coke Breeze	Installed from bottom of hole to 10' above top anode.
Anode Junction Box	8 - 20 Circuit Fiberglass Or Metal	Sealed to prevent insect & rodent intrusion.
Current Splitter Box	2 - 5 Circuit Metal	Sealed to prevent insect & rodent intrusion.
DC / AC Cable	DC: #2, #4, #6, #8 Stranded Copper (One Size Or Any Combination Of) With High Molecular Weight Polyethylene (HMWPE) Insulation. AC: #8 Stranded Copper HMWPE	18" depth in typical situation, 24" depth in roadway, & 36" depth in arroyo's and streams. EXCEPTION: If trenching is in extremely hard substratum, depth will be 6 - 12" with cable installed in conduit. Installed above foreign pipelines if 1' clearance is available, if not, installed under foreign pipeline with 1' clearance (AC cable <i>a/ways</i> installed under foreign pipeline in conduit).
Power Source	1) Rectifier 2) Solar Power Unit 3) Thermoelectric Generator	Choice of power source depending on availability of AC & other economic factors.
External Painting	Color to be selected according to BLM specifications.	Paint applied to any surface equipment associated with the CP system which can reasonably be painted.



LTR



Job separation sheet

UNITED STATES
DEPARTMENT OF THE INTERIOR
BUREAU OF LAND MANAGEMENT

FORM APPROVED
Budget Bureau No. 1004-0135
Expires: March 31, 1993

SUNDRY NOTICES AND REPORTS ON WELLS

Do not use this form for proposals to drill or to deepen or reentry to a different reservoir.
Use "APPLICATION FOR PERMIT—" For such proposals

5. Lease Designation and Serial No.

SF 078500-A

6. If Indian, Allottee or Tribe Name

SUBMIT IN TRIPLICATE

7. If unit or CA, Agreement Designation

San Juan 28-7

8. Well Name and No.

Unit #243M

9. API Well No.

30-039-26590

10. Field and Pool, or Exploratory Area

Blanco Mesaverde/Basin Dakota

11. County or Parish, State

Rio Arriba County, NM

12. CHECK APPROPRIATE BOX(s) TO INDICATE NATURE OF NOTICE, REPORT, OR OTHER DATA

TYPE OF SUBMISSION

- ☒ Notice of Intent
☐ Subsequent Report
☐ Final Abandonment Notice

TYPE OF ACTION

- ☐ Abandonment
☐ Recompletion
☐ Plugging Back
☐ Casing Repair
☐ Altering Casing
☒ Other Pool Change to DK/MV

- ☒ Change of Plans
☐ New Construction
☐ Non-Routine Fracturing
☐ Water Shut-Off
☐ Conversion to Injection
☐ Dispose Water

(Note: Report results of multiple completion on Well

Completion or Recompletion Report and Log form.)

13. Describe Proposed or Completed Operations (Clearly state all pertinent details, and give pertinent dates, including estimated date of starting any proposed work. If well is directionally drilled, give subsurface locations and measured and true vertical depths for all markers and zones pertinent to this work.

Conoco Inc. originally submitted the Basin Dakota pool only, we propose to include the Mesaverde Dakota. This well will be down hole commingled pursuant to the terms and conditions outlined in Order R-11363.



14. I hereby certify that the foregoing is true and correct

Signed Kimberly Southell

Title Associate Property Assistant

Date 05/14/01

15. (This space for Federal or State office use)

Approved by _____
Conditions of approval if any: _____

Title _____

Date 5/18/01

Title 18 U.S.C. Section 1001, makes it a crime for any person knowingly and willfully to make to any department or agency of the United States any false, fictitious or fraudulent statements or representations as to any matter within its jurisdiction.

WMOCD