

UNITED STATES  
DEPARTMENT OF THE INTERIOR  
BUREAU OF LAND MANAGEMENT

FORM APPROVED  
OMB NO. 1004-0136  
Expires February 28, 1995

APPLICATION FOR PERMIT TO DRILL OR DEEPEN

1a. TYPE OF WORK

DRILL ☒ -

DEEPEN ☐

2001 MAR -7 PM

SF 078496

b. TYPE OF WELL

OIL WELL ☐

GAS WELL ☒ - OTHER

SINGLE ZONE ☐

MULTIPLE ZONE ☒

6. IF INDIAN, ALLOTTEE OR TRIBE NAME

7. UNIT AGREEMENT NAME

San Juan 28-7

8. FARM OR LEASE NAME WELL NO.

#131E

9. API WELL NO.

10. FIELD AND POOL, OR WILDCAT

Blanco Mesaverde/ Basin Dakota

11. SEC., T., R., M., OR BLK.  
AND SURVEY OR AREA  
K Sec. 34, T28N, R7W

12. COUNTY OR PARISH

Rio Arriba

13. STATE

NM

2. NAME OF OPERATOR

Conoco Inc.

3. ADDRESS AND TELEPHONE NO.

10 Desta Drive, Suite 649W, Midland, TX 79705-9136-5565

4. LOCATION OF WELL (Report location clearly and in accordance with any State requirements\*)

At surface

2305' FSL & 2485' FWL

At proposed prod. Zone

2305' FSL & 2485' FWL

14. DISTANCE IN MILES AND DIRECTION FROM NEAREST TOWN OR POST OFFICE\*

15. DISTANCE FROM PROPOSED\*  
LOCATION TO NEAREST  
PROPERTY OR LEASE LINE, FT.  
(Also to nearest drlg. Unit line, if any)

6. NO. OF ACRES IN LEASE

18. DISTANCE FROM PROPOSED LOCATION\*  
TO NEAREST WELL, DRILLING, COMPLETED,  
OR APPLIED FOR, ON THIS LEASE, FT.

9. PROPOSED DEPTH  
7290'

17. NO. OF ACRES ASSIGNED  
TO THIS WELL

318.40

20. ROTARY OR CABLE TOOLS  
Rotary

21. ELEVATIONS (Show whether DF, RT, GR, etc.)

6182'-

22. APPROX. DATE WORK WILL START\*

03/17/01

PROPOSED CASING AND CEMENTING PROGRAM

SIZE OF HOLE	GRADE, SIZE OF CASING	WEIGHT PER FOOT	SETTING DEPTH	QUANTITY OF CEMENT
12 1/2"	J-55; 9 5/8"	36#	285'	141 sxs, circ. -
8 3/4"	J-55; 7"	20#	3290'	526 sxs, circ. -
6 1/4"	J-55, 4 1/2"	10.5#	7290' -	TOC @ 3190', 323 sxs, circ. -

It is proposed to drill a vertical wellbore to the Mesaverde/Dakota Pools. A DHC application will be filed with the BLM and NMOCD. An NOS was filed 01/17/01. The well will be drilled and equipped according to the following additional attachments:

1. Well Location & Acreage Dedication Plat (C-102).
2. Proposed Well Plan Outline.
3. Cementing Plan.
4. Blowout Preventer Hookup.
5. Surface Use Plan
6. Production Facility Layout.

This action is subject to technical and  
procedural review pursuant to 43 CFR 3165.3  
and appeal pursuant to 43 CFR 3165.4.

APD/ROW

APPROVED FOR RECORD WITH ATTACHED  
"TECHNICAL REQUIREMENTS"

This application includes ROW's for the well pad, access road, cathodic protection, and pipeline.

IN ABOVE SPACE DESCRIBE PROPOSED PROGRAM: If proposal is to deepen give data on present productive zone and proposed new productive zone. If proposal is to drill or deepen directionally, give pertinent data on subsurface locations and measured and true vertical depths. Give blowout preventer program, if any.

SIGNED

*Keri Southall*

TITLE Analyst

DATE 02/16/01

(This space for Federal or State office Use)

PERMIT NO.

APPROVAL DATE

4/20/01

Application approval does not warrant or certify that the applicant holds legal or equitable title to those rights in the subject lease which would entitle the applicant to conduct operations thereon.

CONDITIONS OF APPROVAL, IF ANY:

APPROVED BY

*/s/ Joel Fawcett*

TITLE

DATE

APR 20

\*See Instructions On Reverse Side

Title 18 U.S.C. Section 1001, makes it a crime for any person knowingly and willfully to make to any department or agency of the United States any false, fictitious or fraudulent statements or representations as to any matter within its jurisdiction.

NMOCD

District I  
PO Box 1980, Hobbs, NM 88241-1980

District II  
PO Drawer DD, Artesia, NM 88211-0719

District III  
1000 Rio Brazos Rd., Aztec, NM 87410

District IV  
PO Box 2088, Santa Fe, NM 87504-2088

State of New Mexico  
Energy, Minerals & Natural Resources Department

OIL CONSERVATION DIVISION  
PO Box 2088  
Santa Fe, NM 87504-2088

Form C-102  
Revised February 21, 1994

Instructions on back  
Submit to Appropriate District Office  
State Lease - 4 Copies  
Fee Lease - 3 Copies

☐ AMENDED REPORT  
2001 MAR -7 PM 1:16

WELL LOCATION AND ACREAGE DEDICATION PLAT

*API Number <b>30-039-26696</b>		*Pool Code <b>72319 / 71599</b>		*Pool Name <b>BLANCO MESAVERDE / BASIN DAKOTA</b>	
*Property Code <b>016608</b>		*Property Name <b>SAN JUAN 28-7 UNIT</b>			*Well Number <b>131E</b>
*GRID No. <b>005073</b>		*Operator Name <b>CONOCO, INC.</b>			*Elevation <b>6182' -</b>

<sup>10</sup> Surface Location

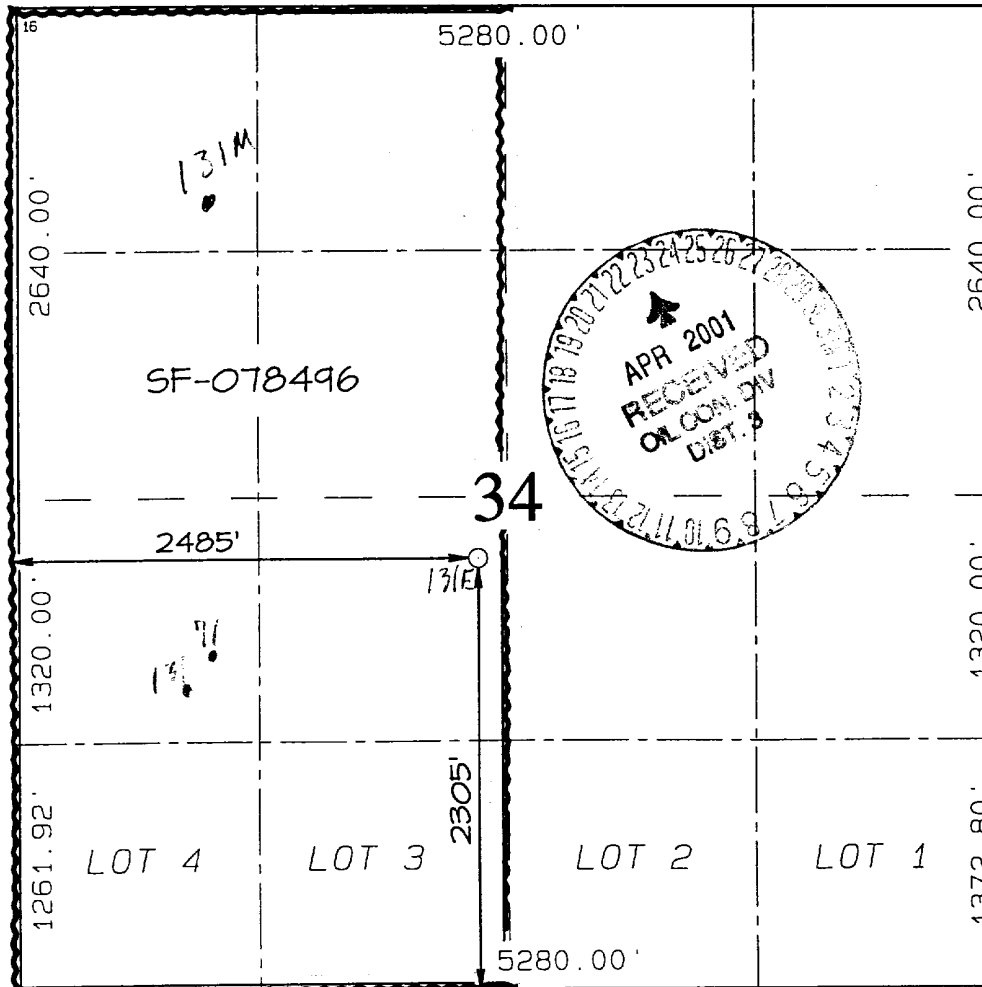
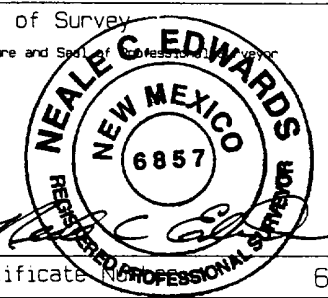
UL or lot no.	Section	Township	Range	Lot Idn	Feet from the	North/South line	Feet from the	East/West line	County
K	34	28N	7W		2305	SOUTH	2485	WEST	RIO ARriba

<sup>11</sup> Bottom Hole Location If Different From Surface

UL or lot no.	Section	Township	Range	Lot Idn	Feet from the	North/South line	Feet from the	East/West line	County

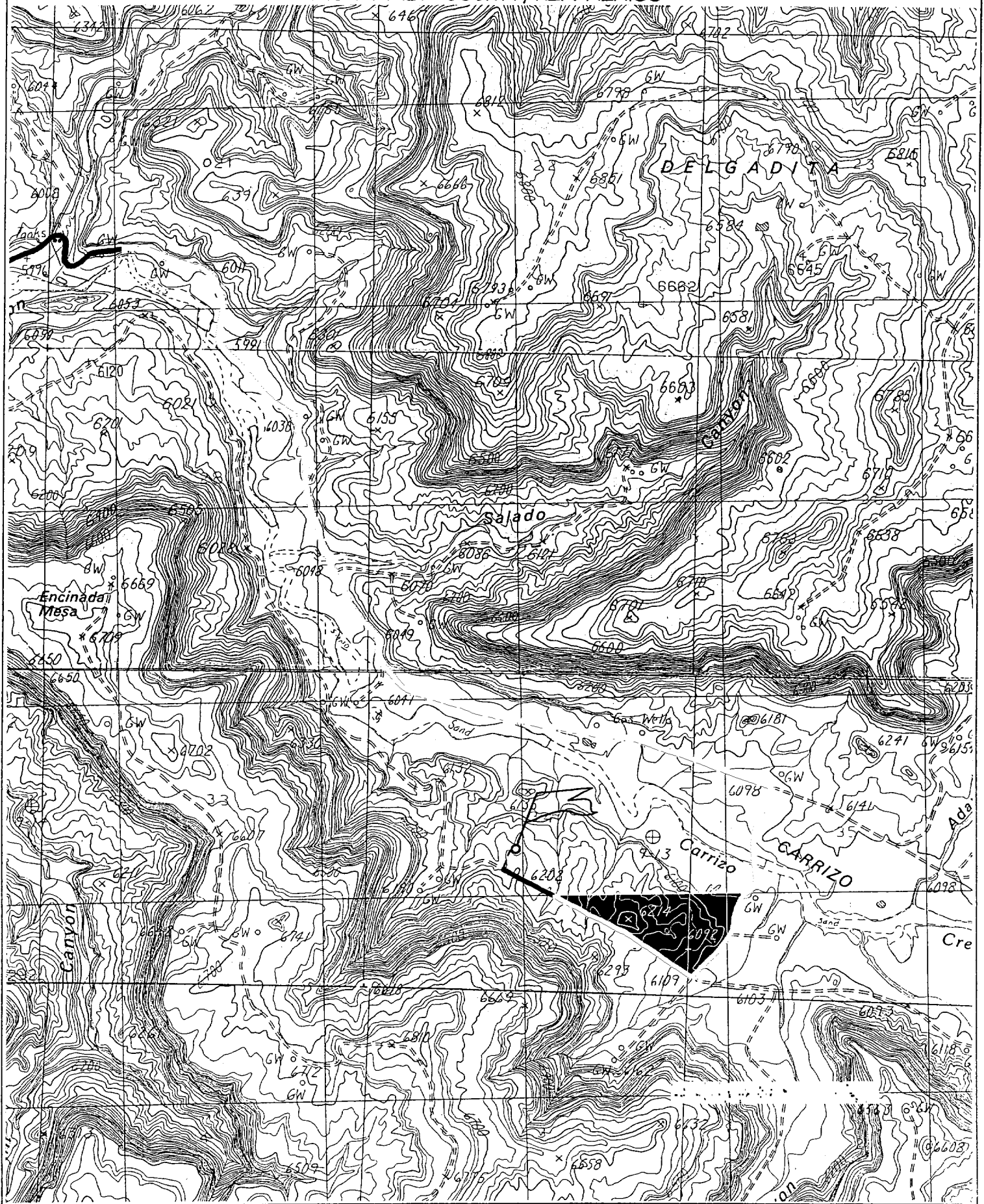
<sup>12</sup> Dedicated Acres <b>318.40 Acres (W/2)</b>					<sup>13</sup> Joint or Infill	<sup>14</sup> Consolidation Code	<sup>15</sup> Order No. <b>R-11139-A</b> <i>Effective Date: 2/12/01</i>
--	--	--	--	--	-------------------------------	----------------------------------	--

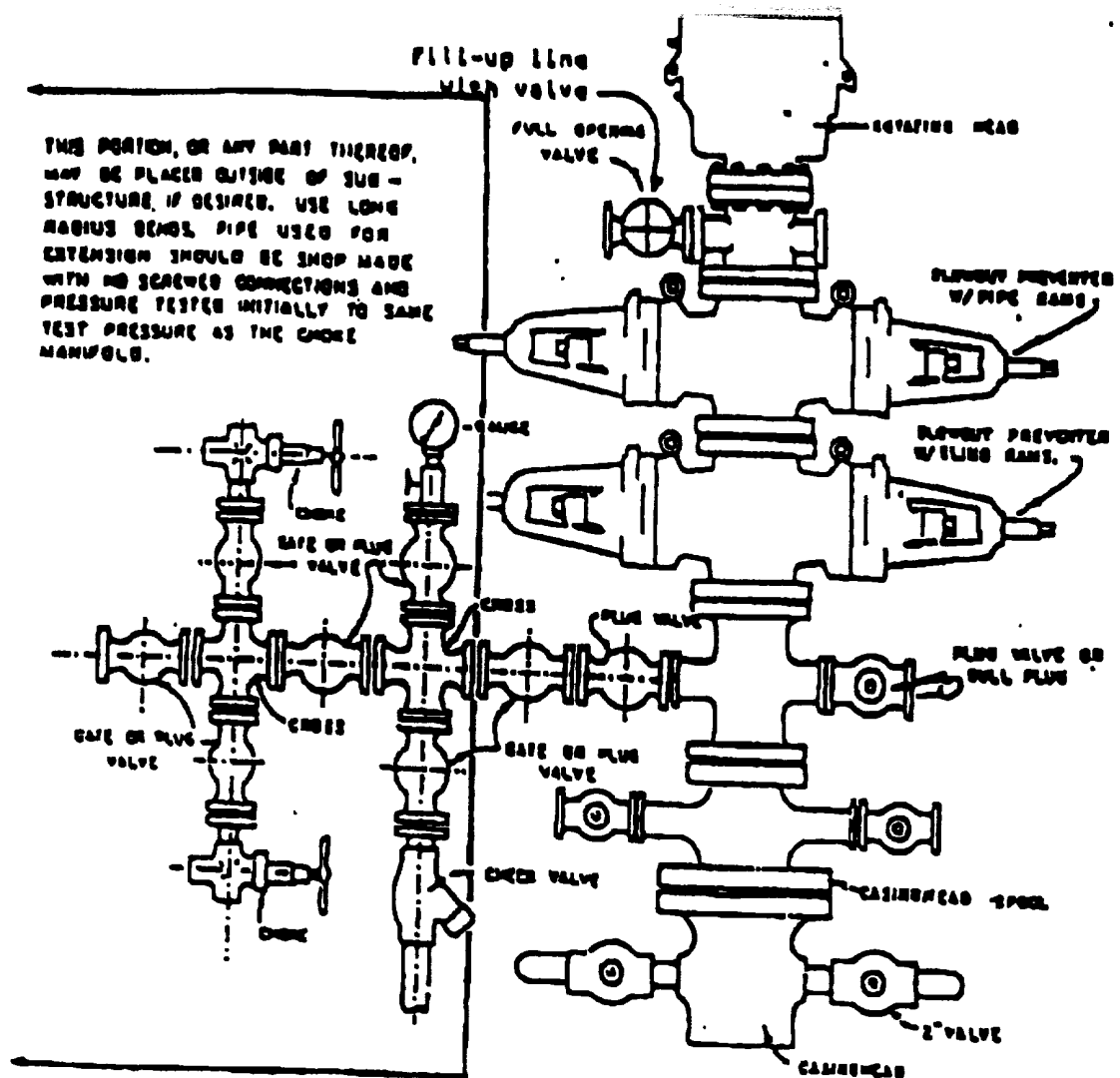
NO ALLOWABLE WILL BE ASSIGNED TO THIS COMPLETION UNTIL ALL INTERESTS HAVE BEEN CONSOLIDATED OR A NON-STANDARD UNIT HAS BEEN APPROVED BY THE DIVISION

				<sup>17</sup> OPERATOR CERTIFICATION I hereby certify that the information contained herein is true and complete to the best of my knowledge and belief.  <i>JoAnn Johnson</i> Signature JoAnn Johnson Printed Name Sr. Property Analyst Title <i>February 16, 2001</i> Date	
				<sup>18</sup> SURVEYOR CERTIFICATION I hereby certify that the well location shown on this plat was plotted from field notes of actual surveys made by me or under my supervision, and that the same is true and correct to the best of my belief.  NOVEMBER 6, 2000 Date of Survey Signature and Seal of Professional Surveyor  Certificate No. 6857	

CONOCO, INC. SAN JUAN 28-7 UNIT #131E

2305' FSL & 2485' FWL, SECTION 34, T28N, R7W, N.M.P.M.  
RIO ARriba COUNTY, NEW MEXICO





## BLOWOUT PREVENTER HOOKUP

Drilling contractors used in the San Juan Basing supply 3000 psi equipment, but cannot provide annular preventors because of sub-structure limitations. Maximum anticipated surface pressures for this well will not exceed the working pressure of the proposed BOP system. Please see the attached BOP diagram details 2000 psi equipment according to Onshore Order No. 2 even though the equipment will test to 3000 psi. The 2000 psi system allows deletion of the annular preventor and fulfills your requirements (note diagram No. 1). In addition, the following equipment will comprise the 2000 psi system:

1. Two rams with one blind and one pipe ram.
2. Kill line (2 inch maximum).
3. One kill line valve.
4. One choke line valve.
5. Two chokes (reference diagram No. 1).
6. Upper kelly cock valve with handle.
7. Safety valve and subs to fit all drill strings in use.
8. Two-inch minimum choke line.
9. Pressure gauge on choke manifold.
10. Fill-up line above the upper most preventor.
11. Rotating head.