

UNITED STATES
DEPARTMENT OF THE INTERIOR
BUREAU OF LAND MANAGEMENT

FORM APPROVED
OMB NO. 1004-0136
Expires February 28, 1995

APPLICATION FOR PERMIT TO DRILL OR DEEPEN

1a. TYPE OF WORK

DRILL ☒

DEEPEN ☐

b. TYPE OF WELL

OIL WELL ☐

GAS WELL ☒

OTHER

SINGLE ZONE ☐

MULTIPLE ZONE ☒

2. NAME OF OPERATOR

Conoco Inc.

3. ADDRESS AND TELEPHONE NO.

10 Desta Drive, Suite 649W, Midland, TX 79705

4. LOCATION OF WELL (Report location clearly and in accordance with any State requirements*)

At surface

295' FSL & 2390' FEL

At proposed prod. Zone

295' FSL & 2390' FEL

14. DISTANCE IN MILES AND DIRECTION FROM NEAREST TOWN OR POST OFFICE*

15. DISTANCE FROM PROPOSED*

LOCATION TO NEAREST
PROPERTY OR LEASE LINE, FT.

(Also to nearest drlg. Unit line, if any)

18. DISTANCE FROM PROPOSED LOCATION*

TO NEAREST WELL, DRILLING, COMPLETED,
OR APPLIED FOR, ON THIS LEASE, FT.

21. ELEVATIONS (Show whether DF, RT, GR, etc.)

6101' -

6. NO. OF ACRES IN LEASE

9. PROPOSED DEPTH

7225'

17. NO. OF ACRES ASSIGNED
TO THIS WELL

327.7 (MV) & 332.4 (DK)

20. ROTARY OR CABLE TOOLS

Rotary

22 APPROX. DATE WORK WILL START*

03/17/01

PROPOSED CASING AND CEMENTING PROGRAM

SIZE OF HOLE	GRADE, SIZE OF CASING	WEIGHT PER FOOT	SETTING DEPTH	QUANTITY OF CEMENT
12 1/2"	J-55; 9 5/8"	36#	285'	141 sxs, circ. -
8 3/4"	J-55; 7"	20#	3270'	523 sxs, circ. -
6 1/4"	J-55, 4 1/2"	10.5#	7225' -	TOC @ 3170', 320 sxs, circ. -

It is proposed to drill a vertical wellbore to the Mesaverde/Dakota Pools. A DHC application will be filed with the BLM and NMOCD. An NOS was filed 01/17/01. The well will be drilled and equipped according to the following additional attachments:

1. Well Location & Acreage Dedication Plat (C-102).
2. Proposed Well Plan Outline.
3. Cementing Plan.
4. Blowout Preventer Hookup.
5. Surface Use Plan
6. Production Facility Layout.

For review to the BLM and NMOCD for
procedural review pursuant to 43 CFR 3165.4
and appeal pursuant to 43 CFR 3165.4.

APD/ROW
BUREAU OF LAND MANAGEMENT
U.S. DEPARTMENT OF THE INTERIOR
MIDLAND, TEXAS

This application includes ROW's for the well pad, cathodic protection, and pipeline.

IN ABOVE SPACE DESCRIBE PROPOSED PROGRAM: If proposal is to deepen give data on present productive zone and proposed new productive zone. If proposal is to drill or deepen directionally, give pertinent data on subsurface locations and measured and true vertical depths. Give blowout preventer program, if any.

SIGNED

Kim Smithall

TITLE Analyst

DATE 02/16/01

(This space for Federal or State office Use)

PERMIT NO.

APPROVAL DATE

4/20/01

Application approval does not warrant or certify that the applicant holds legal or equitable title to those rights in the subject lease which would entitle the applicant to conduct operations thereon.

CONDITIONS OF APPROVAL, IF ANY:

APPROVED BY

/s/ Joel Farrell

TITLE

DATE

APR 20

*See Instructions On Reverse Side

Title 18 U.S.C. Section 1001, makes it a crime for any person knowingly and willfully to make to any department or agency of the United States any false, fictitious or fraudulent statements or representations as to any matter within its jurisdiction.

NMOCD

District I
PO Box 1980, Hobbs, NM 88241-1980

District II
PO Drawer DD, Artesia, NM 88211-0719

District III
1000 Rio Brazos Rd., Aztec, NM 87410

District IV
PO Box 2088, Santa Fe, NM 87504-2088

State of New Mexico
Energy, Minerals & Natural Resources Department

OIL CONSERVATION DIVISION
PO Box 2088
Santa Fe, NM 87504-2088

Form C-102
Revised February 21, 1994

Instructions on back
Submit to Appropriate District Office
State Lease - 4 Copies
Fee Lease - 3 Copies

2001 MAR -7 PM 1:17 AMENDED REPORT

WELL LOCATION AND ACREAGE DEDICATION PLAT

*API Number 30039-26697		*Pool Code 72319 / 71599		*Pool Name BLANCO MESAVERDE / BASIN DAKOTA	
*Property Code 016608		*Property Name SAN JUAN 28-7 UNIT			*Well Number 133F
*OGRID No. 005073		*Operator Name CONOCO, INC.			*Elevation 6101'

10 Surface Location

UL or lot no.	Section	Township	Range	Lot Idn	Feet from the	North/South line	Feet from the	East/West line	County
0	35	28N	7W		295	SOUTH	2390	EAST	RIO ARriba

11 Bottom Hole Location If Different From Surface

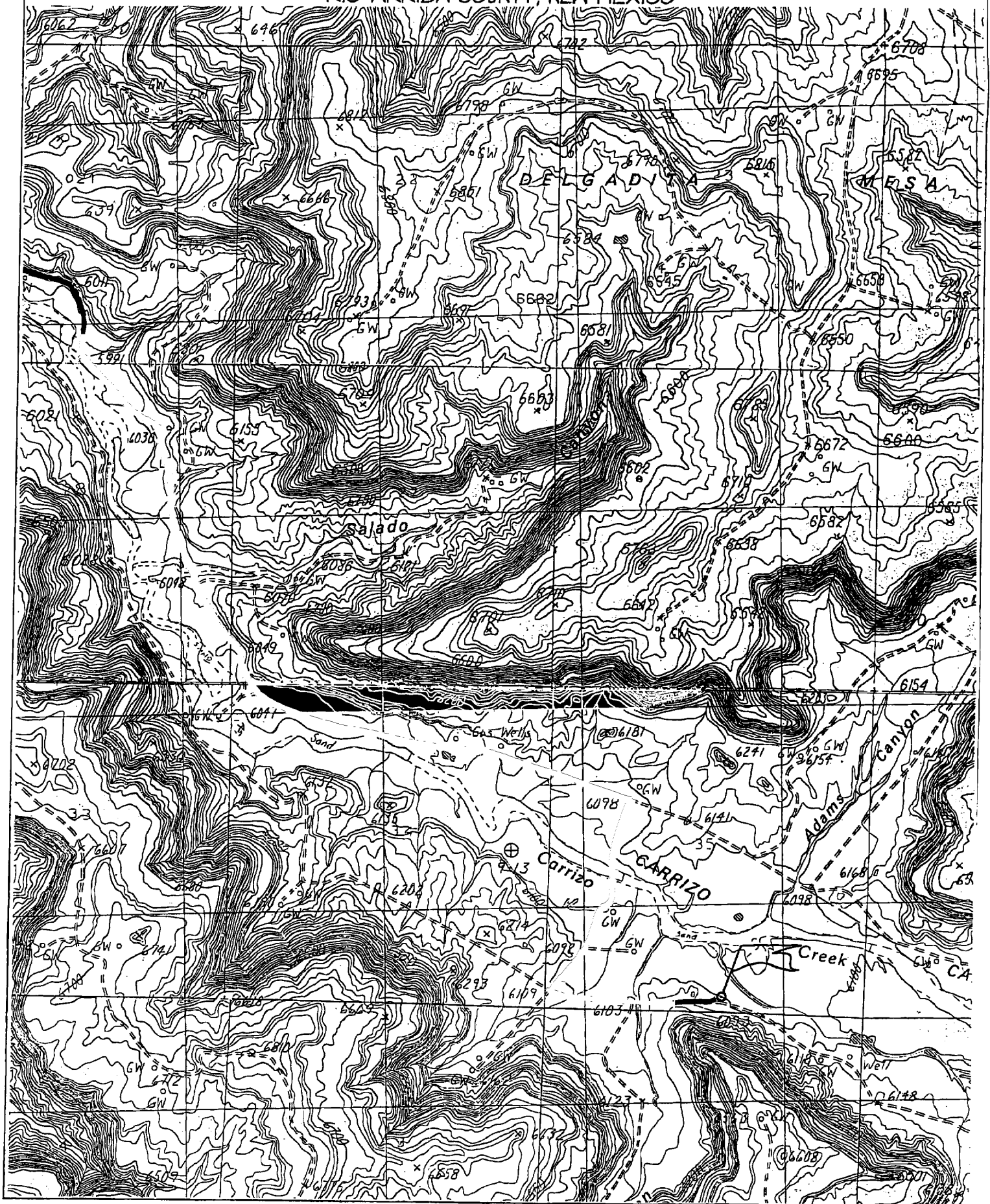
UL or lot no.	Section	Township	Range	Lot Idn	Feet from the	North/South line	Feet from the	East/West line	County

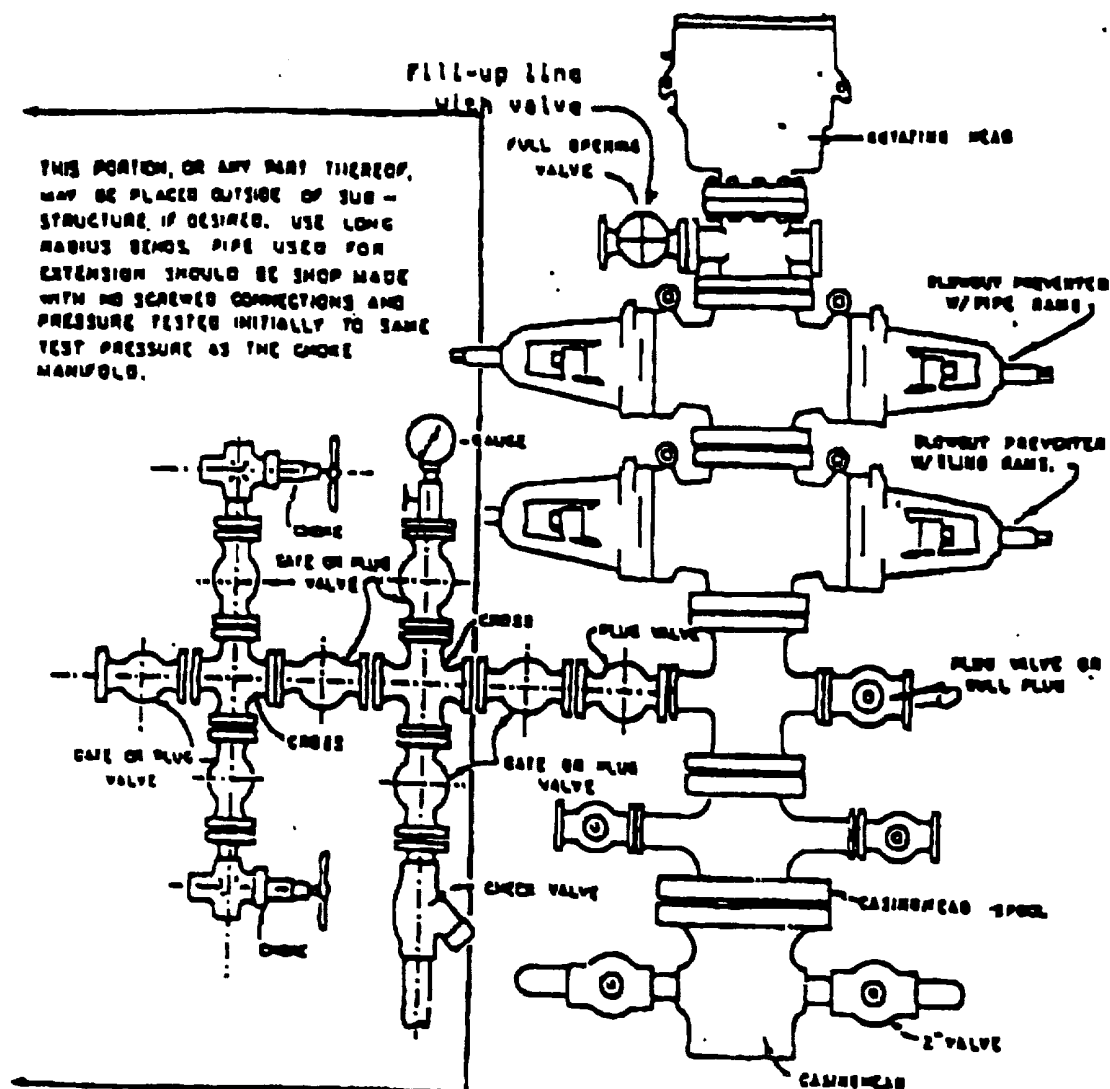
12 Dedicated Acres 327.7 Acres (MV) - 332.4 Acres (DK) <i>Hand up sand down</i>		13 Joint or Infill	14 Consolidation Code	15 Order No. R-111398 <i>Effective Date 2/12/01</i>
----------------------------------------------------------------------------------------------	--	--------------------	-----------------------	------------------------------------------------------------------

NO ALLOWABLE WILL BE ASSIGNED TO THIS COMPLETION UNTIL ALL INTERESTS HAVE BEEN CONSOLIDATED OR A NON-STANDARD UNIT HAS BEEN APPROVED BY THE DIVISION

16				17 OPERATOR CERTIFICATION			
				I hereby certify that the information contained herein is true and complete to the best of my knowledge and belief.			
				Signature <i>JoAnn Johnson</i>			
				Printed Name JoAnn Johnson			
				Title Sr. Property Analyst			
				Date 12-15-00			
				18 SURVEYOR CERTIFICATION			
				I hereby certify that the well location shown on this plat was plotted from field notes of actual surveys made by me or under my supervision, and that the same is true and correct to the best of my belief.			
				Date of Survey OCTOBER 29, 2000			
				Signature and Seal of Registered Surveyor 			
				Certificate No. 6857			

295' FSL & 2390' FEL, SECTION 35, T28N, R7W, N.M.P.M.
RIO ARriba COUNTY, NEW MEXICO





BLOWOUT PREVENTER HOOKUP

Drilling contractors used in the San Juan Basing supply 1000 psi equipment, but cannot provide annular preventors because of sub-structure limitations. Maximum anticipated surface pressures for this well will not exceed the working pressure of the proposed BOP system. Please see the attached BOP diagram details 2000 psi equipment according to Onshore Order No. 2 even though the equipment will test to 3000 psi. The 2000 psi system allows the deletion of the annular preventor and fulfills your requirements (note diagram No. 1). In addition, the following equipment will comprise the 2000 psi system:

1. Two rams with one blind and one pipe ram.
2. Kill line (2 inch maximum).
3. One kill line valve.
4. One choke line valve.
5. Two chokes (reference diagram No. 1).
6. Upper kelly cock valve with handle.
7. Safety valve and subs to fit all drill strings in use.
8. Two-inch minimum choke line.
9. Pressure gauge on choke manifold.
10. Fill-up line above the upper most preventor.
11. Rotating head.