

UNITED STATES
DEPARTMENT OF THE INTERIOR
BUREAU OF LAND MANAGEMENT

APPLICATION FOR PERMIT TO DRILL, DEEPEN, OR PLUG BACK

1a. Type of Work DRILL	5. Lease Number NMSF--079050D Unit Reporting Number 891001051A
1b. Type of Well GAS	6. If Indian, All. or Tribe
2. Operator BURLINGTON RESOURCES Oil & Gas Company	7. Unit Agreement Name San Juan 28-6 Unit
3. Address & Phone No. of Operator PO Box 4289, Farmington, NM 87499 (505) 326-9700	8. Farm or Lease Name San Juan 28-6 Unit 9. Well Number 227
4. Location of Well 775' FNL, 1635' FWL Latitude 36° 38.2, Longitude 107° 27.5	10. Field, Pool, Wildcat So Blanco Pict Cliffs 11. Sec., Twn, Rge, Mer. (NMPM) Sec. 27, T-28-N, R-6-W API # 30-039-26917
14. Distance in Miles from Nearest Town 29 miles from Blanco	12. County Rio Arriba 13. State NM
15. Distance from Proposed Location to Nearest Property or Lease Line 775'	17. Acres Assigned to Well 160 NW/4
16. Acres in Lease	
18. Distance from Proposed Location to Nearest Well, Drig, Compl, or Applied for on this Lease 957'	
19. Proposed Depth 3540'	20. Rotary or Cable Tools Rotary
21. Elevations (DF, FT, GR, Etc.) 6476' GR	22. Approx. Date Work will Start
23. Proposed Casing and Cementing Program See Operations Plan attached	DRILLING OPERATIONS AUTHORIZED ARE SUBJECT TO COMPLIANCE WITH ATTACHED "CENTRAL REGIONAL PLAN"
24. Authorized by: <u>Peggy Case</u> Regulatory/Compliance Supervisor	Date 1-11-02

PERMIT NO. _____

APPROVAL DATE

2/19/02

APPROVED BY

Al Jim Leveo

TITLE

Petr. Eng.

DATE

2/19/02

Archaeological Report to be submitted

Threatened and Endangered Species Report to be submitted

NOTE: This format is issued in lieu of U.S. BLM Form 3160-3

Title 18 U.S.C. Section 1001, makes it a crime for any person knowingly and willfully to make to any department or agency of the United States any false, fictitious or fraudulent statements or presentations as to any matter within its jurisdiction.

10000

Form C-102
Revised August 15, 2000

DISTRICT II
811 South First, Artesia, N.M. 88210

Submit to Appropriate District Office
State Lease - 4 Copies
Fee Lease - 3 Copies

DISTRICT III
1000 Illo Brazos Rd., Aztec, N.M. 87410

OIL CONSERVATION DIVISION

2040 South Pacheco
Santa Fe, NM 87505

DISTRICT IV
2040 South Pacheco, Santa Fe, NM 87505

☐ AMENDED REPORT

WELL LOCATION AND ACREAGE DEDICATION PLAT

¹ API Number 30-039- 26917	² Pool Code 72439	³ Pool Name South Blanco Pictured Cliffs
⁴ Property Code 7462	⁵ Property Name SAN JUAN 28-6 UNIT	⁶ Well Number 227
⁷ OGRIID No. 14538	⁸ Operator Name BURLINGTON RESOURCES OIL & GAS INC.	⁹ Elevation 6476'

¹⁰ Surface Location

UL or lot no.	Section	Township	Range	Lot Idn	Feet from the	North/South line	Feet from the	East/West line	County
C	27	28-N	6-W		775	NORTH	1635	WEST	RIO ARriba

¹¹ Bottom Hole Location if Different From Surface

UL or lot no.	Section	Township	Range	Lot Ida	Feet from the	North/South line	Feet from the	East/West line	County
12 Dedicated Acres			13 Joint or Infill		14 Consolidation Code		15 Order No.		
30-160									

NO ALLOWABLE WILL BE ASSIGNED TO THIS COMPLETION UNTIL ALL INTERESTS HAVE BEEN CONSOLIDATED
OR A NON-STANDARD UNIT HAS BEEN APPROVED BY THE DIVISION

17 OPERATOR CERTIFICATION

I hereby certify that the information contained herein is true and complete to the best of my knowledge and belief.

Signature *Peggy Case*

Peggy Cole
Printed Name:

Regulatory Supervisor
Title _____

1-11-02

18 SURVEYOR CERTIFICATION

I hereby certify that the well location shown on this plat was plotted from field notes of actual surveys made by me or under my supervision, and that the same is true and correct to the best of my belief.

11727
Date of Survey _____
Signature _____ Seal of Professional Surveyor
8894
8894
Certificate Number _____

BURLINGTON RESOURCES OIL & GAS INC.

SAN JUAN 28-6 UNIT 227

NW/4 SEC. 27, T-28-N, R-6-W, N.M.P.M.

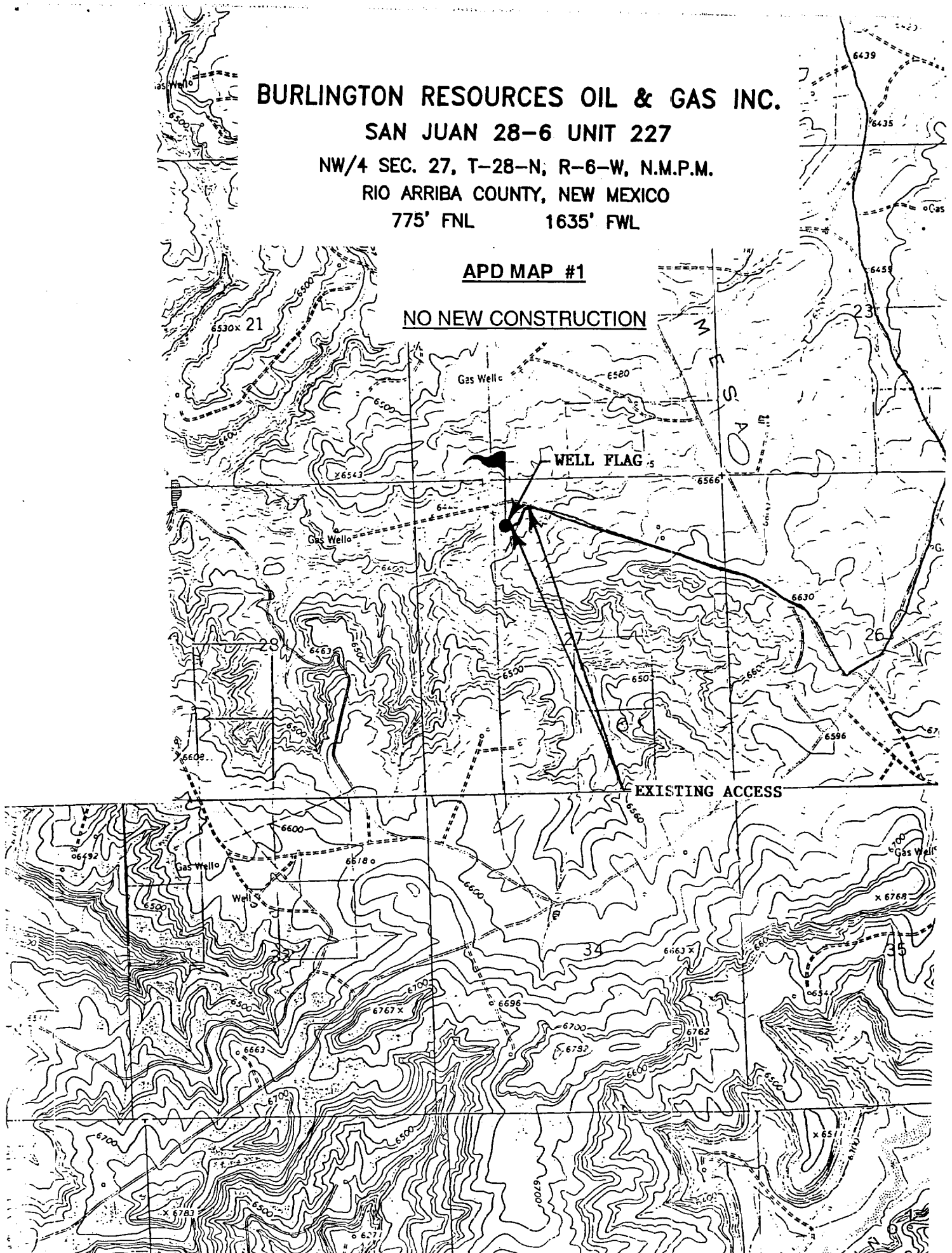
RIO ARriba COUNTY, NEW MEXICO

775' FNL

1635' FWL

APD MAP #1

NO NEW CONSTRUCTION



OPERATIONS PLAN

Well Name: San Juan 28-6 Unit #227
Location: 775' FNL, 1635' FWL, Section 27, T-28-N, R-6-W
Rio Arriba County, New Mexico
Latitude 36° 38.2, Longitude 107° 27.5
Formation: South Blanco Pictured Cliffs
Elevation: 6476' GL

Formation:	Top	Bottom	Contents
Surface	San Jose	2538'	
Ojo Alamo	2538'	2658'	aquifer
Kirtland	2658'	3054'	gas
Fruitland	3054'	3288'	gas
Pictured Cliffs	3288'		gas
Total Depth	3540'		

Logging Program:

Cased hole - Surface to TD - CBL-CCL-GR
Open hole - Surface to TD - Array Induction, CNL-CDL

Coring Program: None

Mud Program:

<u>Interval</u>	<u>Type</u>	<u>Weight</u>	<u>Vis.</u>	<u>Fluid Loss</u>
0- 200'	Spud	8.4-9.0	40-50	no control
200-3540'	FW	8.4-9.0	32-45	no control

Casing Program (as listed, equivalent, or better):

<u>Hole Size</u>	<u>Depth Interval</u>	<u>Csg. Size</u>	<u>Wt.</u>	<u>Grade</u>
8 3/4"	0 - 200'	7"	20.0#	J-55
6 1/4"	0 - 3540'	2 7/8"	6.5#	J-55

Float Equipment: 7" surface casing - saw tooth guide shoe.
Centralizers will be run in accordance with Onshore Order #2.

2 7/8" production casing - float shoe on bottom. Three centralizers run every other joint above shoe. Seven centralizers run every 3rd joint to the base of the Ojo Alamo @ 2658'. Two turbolizing type centralizers - one below and one into the base of the Ojo Alamo @ 2658'. Standard centralizers thereafter every fourth joint up to the base of the surface pipe.

Wellhead Equipment: 7" x 2 7/8" 2000 psi screw on independent wellhead.

Cementing:

7" surface casing - cement with 76 sx Class B with 3% calcium chloride and 0.25 pps Flocele (90 cu.ft. of slurry, circulate cement to surface). WOC 8 hrs. Test casing to 600 psi for 30 minutes.

2 7/8" production casing - Lead w/500 sx Premium Lite cement w/3% calcium chloride, 1/4 pps Flocele, 5 pps LCM-1, 0.4% FL-52, 0.4% SMS. Tail w/90 sx Type III cement w/1% calcium chloride, 1/4 pps Flocele, and 0.2% FL-52 (1189 cu.ft. of slurry, 100% excess to circulate to surface).

Note: If open hole logs are run, cement volumes will be based on 25% excess over caliper volumes.

BOP and tests:

Surface to TD - 11" 2000 psi (minimum double gate BOP stack (Reference Figure #1). Prior to drilling out surface casing, test rams to 600 psi/30 min.

Completion - 6" 2000 psi (minimum) double gate BOP stack (Reference Figure #2). Prior to completion operations, test rams and casing to 2000 psi/15 min.

From surface to TD - choke manifold (Reference Figure #3).

Pipe rams will be actuated to least once each day and blind rams actuated once each trip to test proper functioning. An upper kelly cock valve with handle and drill string safety valves to fit each drill string will be maintained and available on the rig floor.

BOP and tests (if a coiled tubing drilling rig is utilized):

Surface to TD: 7 1/16" 2000 psi (minimum) Torus annular BOP stack (Reference Figure #1B). Prior to drilling out surface casing, test annular BOP to 600 psi/30 minutes.

Completion: 7 1/16" 2000 psi (minimum) double gate BOP stack (Reference Figure #2). Prior to completion operations, test blind rams and casing to 1500 psi/30 minutes; all pipe rams and casing to 1500 psi/30 minutes each.

From surface to TD: choke manifold (Reference Figure #3).

The annular BOP will be actuated to close on drill pipe (coiled tubing) at least once each day and to close on open hole once each trip to test proper functioning.

Additional information:

- * The Pictured Cliffs formation will be completed.
- * Anticipated pore pressure for the Pictured Cliffs is 500 psi.
- * This gas is dedicated.
- * The northwest quarter of Section 27 is dedicated to the Pictured Cliffs.

Eric J. Giles
Drilling Engineer

1/14/02
Date