

State of New Mexico  
Energy, Minerals and Natural Resources Department

Form C-101

OIL CONSERVATION DIVISION  
P. O. Box 2088  
Santa Fe, New Mexico 87504-2088

APPLICATION FOR PERMIT TO DRILL, DEEPEN,  
OR PLUG BACK

API NO. (assigned by OCD on new well)

5. Indicate Type of Lease  
STATE OF NEW MEXICO  
6. State Oil & Gas Lease No.  
E-1010-1

1a. Type of Work  
PLUG BACK

b. Type of Well  
GAS

RECEIVED

AUG 30 1990

OIL CON. DIV.  
DIST. 3

7. Lease Name or Unit Agreement Name

MAGNOLIA COM

2. Name of Operator  
MERIDIAN OIL INC.

8. Well No.  
1

3. Address of Operator  
P. O. BOX 4289  
FARMINGTON, NM 87499

9. Pool Name or Wildcat

BASIN FRUITLAND COAL

4. Well Location  
1630' FSL; 994' FEL

SEC. 32, T27N, R09W, SAN JUAN COUNTY, NM

10. Proposed Depth

11. Formation

12. Rotary or C.T.

13. Elevation  
6486' GL

14. Bond Type

15. Drill Contractor

16. Est. Start Date

17. PROPOSED CASING AND CEMENT PROGRAM

SIZE HOLE	SIZE CASING	WT. PER FT.	SET. DEPTH	SKS OF CEMENT	EST. TOP

I hereby certify that the information above is true and complete to the best of my knowledge and belief.

SIGNATURE [Signature] (SHL) TITLE Regulatory Affairs DATE 8-29-90

(This space for State Use)

APPROVED BY [Signature] TITLE \_\_\_\_\_  
Conditions of approval, if any:

DATE \_\_\_\_\_

Hold C-104 FOR CG & NSL

Submit to Appropriate  
District Office  
State Lease - 4 copies  
Fee Lease - 3 copies

State of New Mexico  
Energy, Minerals and Natural Resources Department

Form C-102  
Revised 1-1-89

OIL CONSERVATION DIVISION

P.O. Box 2088  
Santa Fe, New Mexico 87504-2088

DISTRICT I  
P.O. Box 1940, Hobbs, NM 88240

DISTRICT II  
P.O. Drawer 60, Artesia, NM 88210

DISTRICT III  
1000 Rio Bravo Rd., Aztec, NM 87410

WELL LOCATION AND ACREAGE DEDICATION PLAT

All Distances must be from the outer boundaries of the section

Operator Meridian Oil Inc.			Lease Magnolia Com (E-1010-1)			Well # 1		
Unit Letter I	Section 32	Township 27 North	Range 9 West	County San Juan				
Actual Footage Location of Well: 1630 feet from the South line and 994 feet from the East line								
Ground level Elev. 6486		Producing Formation Fruitland Coal		Pool Basin		Dedicated Acreage 320 Acres		

1. Outline the acreage dedicated to the subject well by colored pencil or hatchure marks on the plat below.

2. If more than one lease is dedicated to the well, outline each and identify the ownership thereof (both as to working interest and royalty).

3. If more than one lease of different ownership is dedicated to the well, have the interest of all owners been consolidated by communitization, unitization, force-pooling, etc.?

☐ Yes ☐ No

If answer is "yes" type of consolidation communitization agreement will be

obtained  
this form if necessary.

No allowable will be assigned to the well until all interests have been consolidated (by communitization, unitization, force-pooling, or otherwise) or until a non-standard unit, eliminating such interest, has been approved by the Division.

Note: not resurveyed  
taken from plat by  
David O. Villen 10-22-57

OPERATOR CERTIFICATION

I hereby certify that the information contained herein is true and complete to the best of my knowledge and belief.

*Peggy Bradford*  
Signature

Peggy Bradford

Printed Name

Regulatory Affairs

Position

Meridian Oil Inc.

Company

Date

8-29-90

SURVEYOR CERTIFICATION

I hereby certify that the well location shown on this plat was plotted from field notes actual surveys made by me or under my supervision, and that the same is true and correct to the best of my knowledge and belief.

8-28-90

Date

Certified



Neale Edwards

0 330 660 990 1320 1650 1980 2310 2640 2000 1500 1000 500 0

RECOMPLETION PROCEDURE  
MAGNOLIA COM #1

\*\*\*NO WORK IS TO BE PERFORMED OR EQUIPMENT TO BE LOCATED OFF APPROVED WELLPAD\*\*\*

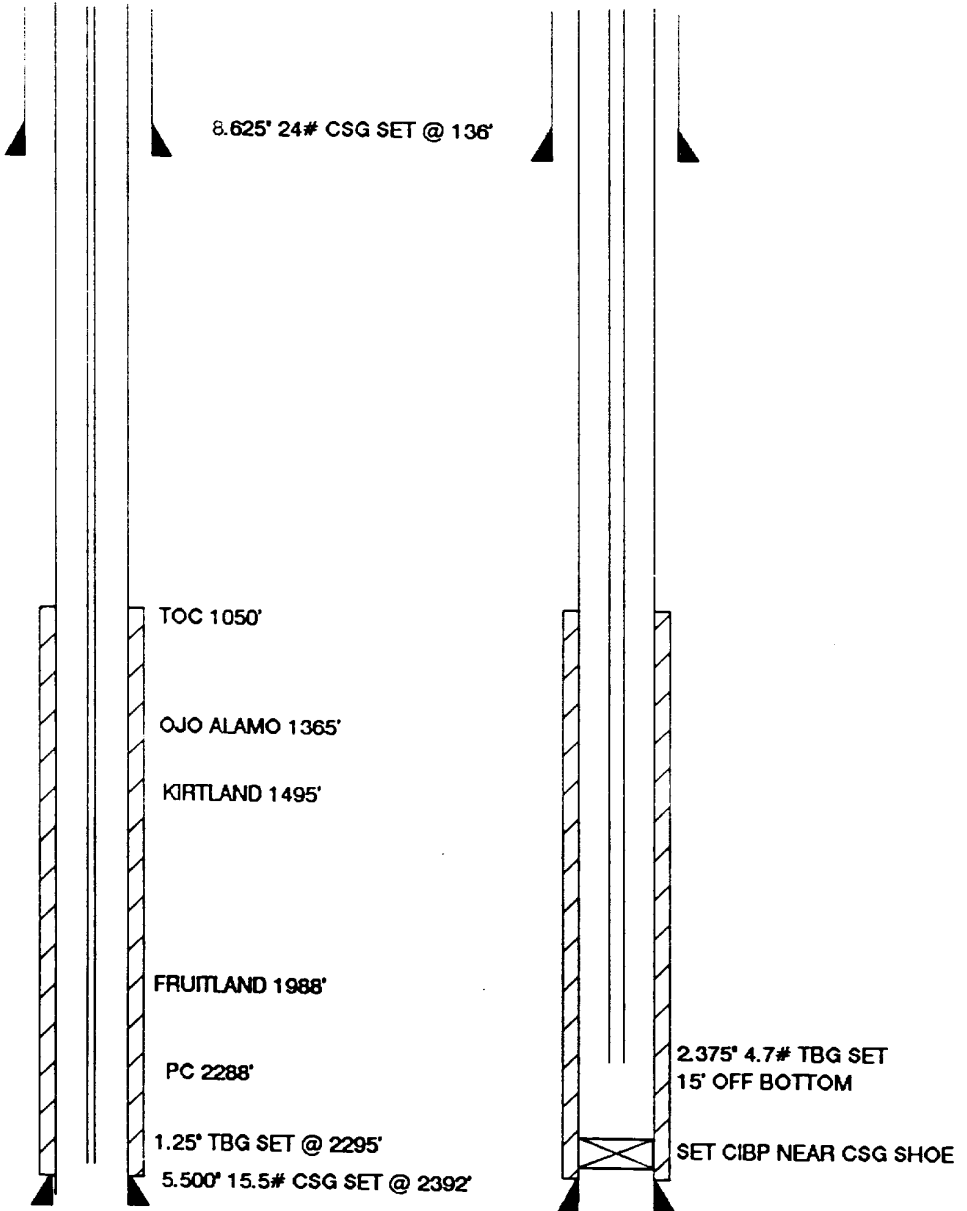
1. Prepare location for workover. Install or replace anchors as necessary.
  2. MOL with workover rig, hold safety meeting, install safety signs and proper fire equipment at strategic points. Comply with all BLM, NMOCD, and MOI regulations.
  3. Rig up blow lines, record tubing and casing pressures and blow well down. NU 6" 3000 psi BOP and test. Load hole with water.
  4. TOOH with tubing.
  5. PU 5 1/2" casing scraper and TIH with 2 3/8" 4.7# J-55 EUE tubing. TOOH.
  6. RU wireline unit and set a 5 1/2" CIBP near 2280'. Pressure test casing to 2500 psi for 15 minutes.
  7. Run logs.
  8. Perforate across the coal. Perforations to be picked from log.
  9. TIH with tubing and swab wellbore dry. Check well for gas flow. Evaluate well overnight. Check well for buildup pressure and gas flow.
  10. Hold safety meeting with all personnel on location. PT surface lines to 4000 psi. Fracture stimulate well.
  11. TIH with tubing and clean out to CIBP.
  14. Land tubing. Swab well in. Record final 30, 45 and 60 minute gauges on morning report. ND BOP. NU tree. Rig down and release rig.
  15. Shut well in for pressure build up. Obtain gas and water sample for analysis.
-

# MAGNOLIA COM #1

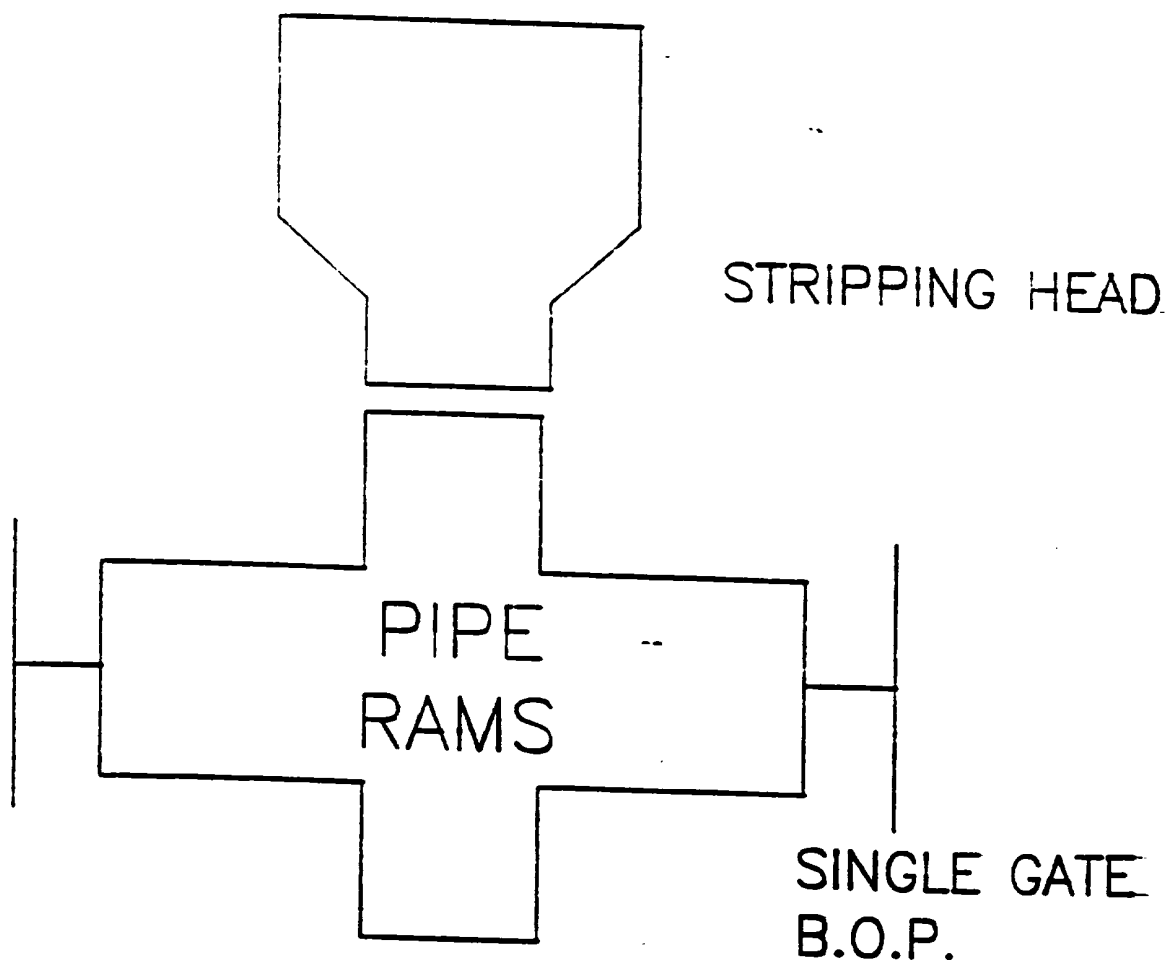
## WELLBORE DIAGRAMS

BEFORE R/C

AFTER R/C



# WORKOVER / RECOMPLETION B. O. P. SCHEMATIC



MINIMUM: 2 7/8" 1500 PSI SINGLE GATE B.O.P.

MAXIMUM ANTICIPATED SHUT-IN WELLHEAD  
PRESSURE IS LESS THAN 1500 PSI