

UNITED STATES  
DEPARTMENT OF THE INTERIOR  
BUREAU OF LAND MANAGEMENT

## Sundry Notices and Reports on Wells

OCT 13 1995

## 1. Type of Well

GAS

OCT 13 1995

## 5. Lease Number

SF-078356B

## 6. If Indian, All. or Tribe Name

## 7. Unit Agreement Name

Huerfanito Unit

## 8. Well Name &amp; Number

Huerfanito Unit #39

## 9. API Well No.

30-039-06229

## 10. Field and Pool

Basin Fruitland Coal/  
Baillard Pictured Cliffs

## 11. County and State

Rio Arriba Co, NM

## 2. Name of Operator

**MERIDIAN OIL**

## 3. Address &amp; Phone No. of Operator

PO Box 4289, Farmington, NM 87499 (505) 326-9700

## 4. Location of Well, Footage, Sec., T, R, M

1590' FSL, 1780' FWL, Sec. 27, T-27-N, R-9-W, NMPM

## 12. CHECK APPROPRIATE BOX TO INDICATE NATURE OF NOTICE, REPORT, OTHER DATA

## Type of Submission

☒ Notice of Intent  
☐ Subsequent Report  
☐ Final Abandonment

## Type of Action

☒ Abandonment  
☐ Recompletion  
☐ Plugging Back  
☐ Casing Repair  
☐ Altering Casing  
☐ Other -

☐ Change of Plans  
☐ New Construction  
☐ Non-Routine Fracturing  
☐ Water Shut off  
☐ Conversion to Injection

## 13. Describe Proposed or Completed Operations

It is intended to plug and abandon the subject well according to the attached procedure and wellbore diagram.

**RECEIVED**  
OCT 20 1995

## 14. I hereby certify that the foregoing is true and correct.

Signed [Signature] (ROS1) Title Regulatory Administrator Date 10/12/95

(This space for Federal or State Office use)

APPROVED BY

Title

Date

CONDITION OF APPROVAL, if any:

**APPROVED**

OCT 12 1995

DISTRICT MANAGER

NMOCB

# PLUG & ABANDONMENT PROCEDURE

10-9-95

Huerfanito Unit #39  
Basin Fruitland Coal  
SW Section 27, T-27-N, R-09-W  
San Juan Co., New Mexico

Note: All cement volumes use 100% excess outside pipe and 50' excess inside pipe. The stabilizing wellbore fluid will be 8.3 ppg, sufficient to balance all exposed formation pressures.

1. Install and test location rig anchors. Prepare blow pit. Comply to all NMOC, BLM, and MOI regulations.
2. MOL and RU daylight pulling unit. Conduct safety meeting for all personnel on location. NU relief line. Blow down well and kill with water as necessary. ND wellhead and NU BOP. Test BOP.
3. POH and tally 2-3/8" tubing (68 jts @ 2216', SN @ 2183'); visually inspect. If necessary PU 2-3/8" tubing workstring.
4. **Plug #1 (Fruitland Coal perforations and top, 2300' - 1820')**: RIH with open ended tubing and tag CIBP at 2300'. Pump 15 bbls water. Mix 78 sx Class B cement and spot a balanced plug from 2300' to 1820' over the Fruitland Coal perforations. Pull out of hole and WOC. PU 5-1/2" casing scraper or wireline gauge ring and round trip to 1415'. RIH and tag cement. Load well with water and circulate clean. Pressure test casing to 500#. POH with tubing.
5. **Plug #2 (Kirtland and Ojo Alamo tops, 1590' - 1365')**: Perforate 4 squeeze holes at 1590'. Establish rate into squeeze holes if casing tested. PU 5-1/2" cement retainer and RIH: set at 1415'. Establish rate into squeeze holes. Mix and pump 98 sx Class B cement, squeeze 66 sx cement outside casing from 1590' to 1365' and leave 32 sx cement inside casing. POH and LD tubing and setting tool.
6. **Plug #3 (Surface)**: Perforate 2 holes at 146'. Establish circulation out bradenhead valve. Mix approximately 40 sx Class B cement and pump down 5-1/2" casing, circulate good cement out bradenhead valve. Shut in well and WOC.
7. ND BOP and cut off wellhead below surface casing flange. Install P&A marker to comply with regulations. RD, MOL, cut off anchors, and restore location.

Recommended:

  
Operations Engineer

Approval:

\_\_\_\_\_  
Production Superintendent

# Huerfanito Unit #39

CURRENT

Basin Fruitland Coal

SW Section 27, T-27-N, R-9-W, San Juan County, NM

Today's Date: 10/6/95  
Spud: 1/10/56  
Completed: 3/12/56  
Recompleted: 7/9/90

Nacimiento  
@ Surface  
12-1/4" hole

8-5/8", 24.0# J-55, Csg set @ 96',  
Cmt w/83 cf (70 sx) (Circulated to Surface)

68 jts 2-3/8", 4.7# J-55, EUE, 8rd, tbgs set @ 2216',  
(SN @ 2183')

Ojo Alamo @ 1415'

Kirtland @ 1540'

Top of Cmt @ 1799' (75%)

Fruitland @ 1870'

Fruitland Coal Perforations:  
2145' - 2234', Total 54 holes

Pictured Cliffs @ 2308'

7-7/8" hole

PBTD 2300'

CIBP @ 2300'

5-1/2", 14.0# & 15.5# J-55, Csg set @ 2310',  
Cmt w/118 cf (100 sx)

TD @ 2377'

# Huerfanito Unit #39

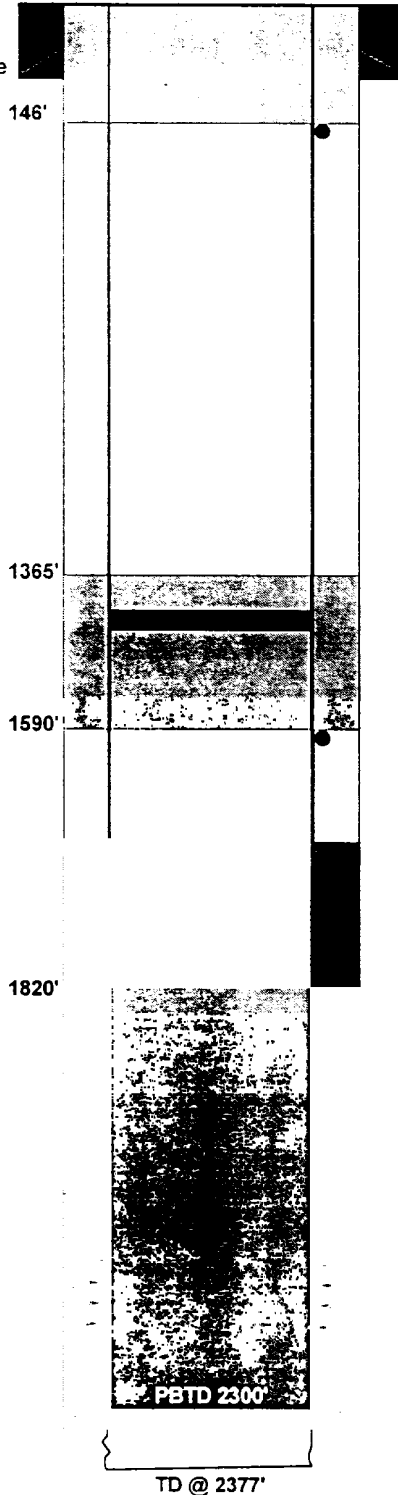
## PROPOSED

Basin Fruitland Coal

SW Section 27, T-27-N, R-9-W, San Juan County, NM

Today's Date: 10/6/95  
Spud: 1/10/56  
Completed: 3/12/59  
Recompleted: 7/9/90

Nacimiento  
@ Surface  
12-1/4" hole



8-5/8", 24.0#, J-55, Csg set @ 96',  
Cmt w/83 cf (70 sx) (Circulated to Surface)

Perf @ 146'

Plug #3: 146' - Surface,  
Cmt w/40 sx Class B Cmt

Ojo Alamo @ 1415'

CR @ 1415'

Plug #2: 1590' - 1365',  
Cmt w/98 sx Class B Cmt

Kirtland @ 1540'

Perf @ 1590'

Top of Cmt @ 1799' (75%)

Fruitland @ 1870'

Plug #1: 2300' - 1820',  
Cmt w/78 sx Class B Cmt

Fruitland Coal Perforations:  
2145' - 2234', Total 54 holes

Pictured Cliffs @ 2308'

7-7/8" hole

CIBP @ 2300'

5-1/2", 14.0# & 15.5#, J-55, Csg set @ 2310',  
Cmt w/118 cf (100 sx)

TD @ 2377'