

UNITED STATES  
DEPARTMENT OF THE INTERIOR  
BUREAU OF LAND MANAGEMENT

APPLICATION FOR PERMIT TO DRILL, DEEPEN, OR PLUG BACK

1a. TYPE OF WORK PLUG BACK	5. LEASE NUMBER I-149-Ind-8468
1b. TYPE OF WELL GAS	6. IF INDIAN, ALL. OR TRIBE NAME NAVAJO TRIBE OF INDIANS
2. OPERATOR MERIDIAN OIL INC.	7. UNIT AGREEMENT NAME
3. ADDRESS & PHONE NO. OF OPERATOR P.O. BOX 4289 FARMINGTON, NM 87499 (505) 326-9700	8. FARM OR LEASE NAME NAVAJO INDIAN B
4. LOCATION OF WELL 990' FNL, 900' FWL	9. WELL NO. #2
14. DISTANCE IN MILES FROM NEAREST TOWN	10. FIELD, POOL, OR WILDCAT BASIN FRUITLAND COAL
15. DISTANCE FROM PROPOSED LOCATION TO NEAREST PROPERTY OR LEASE LINE.	11. SEC. T. R. M OR BLK. D SEC. 19, T27N, R08W
16. ACRES IN LEASE	12. COUNTY SAN JUAN
17. ACRES ASSIGNED TO WELL 321.44	13. STATE NM
18. DISTANCE FROM PROPOSED LOCATION TO NEAREST WELL DR. COMPL., OR APPLIED FOR ON THIS LEASE.	20. ROTARY OR CABLE TOOLS
21. ELEVATIONS (DF, FT, GR, ETC.) 6026' DF 6030 GL	22. APPROX. DATE WORK WILL START
23. PROPOSED CASING AND CEMENTING PROGRAM	

\*SEE OPERATIONS PLAN

24. AUTHORIZED BY: [Signature] (SHL)  
REGULATORY AFFAIRS

9-26-90  
DATE

PERMIT NO. \_\_\_\_\_ APPROVAL DATE \_\_\_\_\_

APPROVED BY \_\_\_\_\_ TITLE \_\_\_\_\_ DATE \_\_\_\_\_

NOTE: THIS FORMAT IS ISSUED IN LIEU OF US BLM FORM 3160-3.  
(NO ADDITIONAL DIRT WORK WILL BE REQUIRED)

APPROVED

Hold I-149 FOR NSC  
NMOC

OCT 04 1990  
Karl Townsend  
AREA MANAGER

Submit to Appropriate  
District Office  
State Lease - 4 copies  
Fee Lease - 3 copies

State of New Mexico  
Energy, Minerals and Natural Resources Department

Form C-182 -  
Revised 1-1-89

OIL CONSERVATION DIVISION

P.O. Box 2088  
Santa Fe, New Mexico 87504-2088

DISTRICT I  
P.O. Box 1980, Hobbs, NM 88240

DISTRICT II  
P.O. Drawer DD, Artesia, NM 88210

DISTRICT III  
1000 Rio Brazos Rd., Aztec, NM 87410

WELL LOCATION AND ACREAGE DEDICATION PLAT

All Distances must be from the outer boundaries of the section

Operator Meridian Oil Inc.			Lease (I-149-IND-8468) Navajo Indian B		Well # 2
Unit Letter D	Section 19	Township 27 North	Range 8 West	County NMNM San Juan	
Actual Footage Location of Well:					
990 feet from the North line and		990 feet from the West line			
Ground level Elev. 6030'	Producing Formation Fruitland Coal	Pool Basin	Dedicated Acreage 321.44 Acres		

- Outline the acreage dedicated to the subject well by colored pencil or machine marks on the plat below.
- If more than one lease is dedicated to the well, outline each and identify the ownership thereof (both as to working interest and royalty).
- If more than one lease of different ownership is dedicated to the well, have the interest of all owners been consolidated by commutation, unitization, force-pooling, etc.?  
☐ Yes ☐ No If answer is "yes" type of consolidation: \_\_\_\_\_  
If answer is "no" list the owners and trust descriptions which have actually been consolidated. (Use reverse side of this form if necessary.)  
No allowable will be assigned to the well until all interests have been consolidated (by commutation, unitization, force-pooling, or otherwise) or until a non-standard unit, eliminating such interest, has been approved by the Division.

OPERATOR CERTIFICATION

I hereby certify that the information contained herein is true and complete to the best of my knowledge and belief.

Signature  
Peggy Bradfield  
Printed Name  
Regulatory Affairs  
Position  
Meridian Oil Inc.  
Company

Date: 9-26-90

SURVEYOR CERTIFICATION

I hereby certify that the well location shown on this plat was plotted from field notes of actual surveys made by me or under my supervision, and that the same is true and correct to the best of my knowledge and belief.

9-26-90

Date Surveyed  
Signature  
Professional



Neale J. Edwards

Not re-surveyed:  
Prepared from a plat,  
dated: 1-28-69  
by: B. deV. Merchant

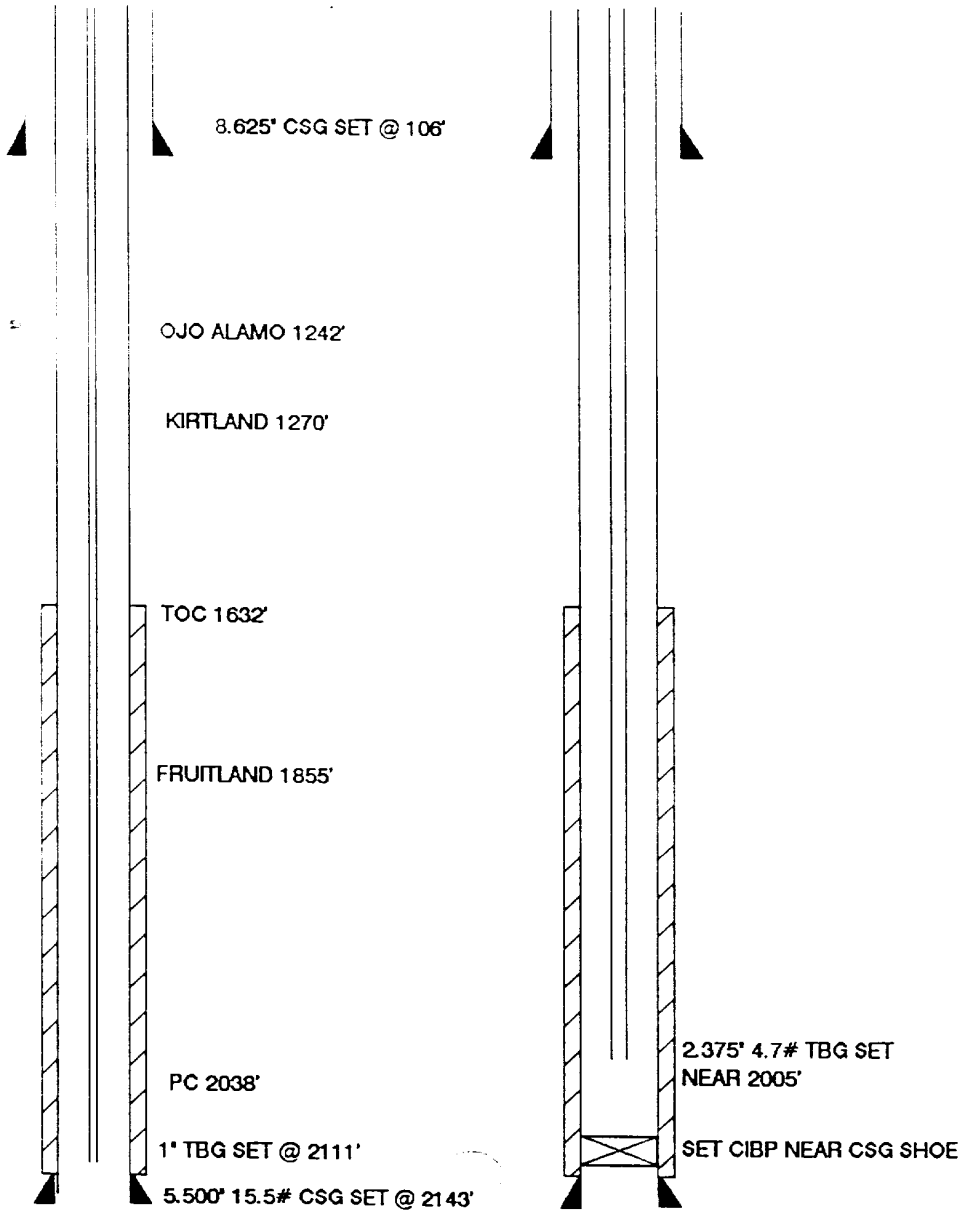
RECEIVED  
OCT 17 1990  
OIL CON. DIV.  
DIST. 3

0 330 660 990 1320 1650 1980 2310 2640 2000 1500 1000 500 0

# NAVAJO INDIAN B #2 WELLBORE DIAGRAMS

BEFORE R/C

AFTER R/C

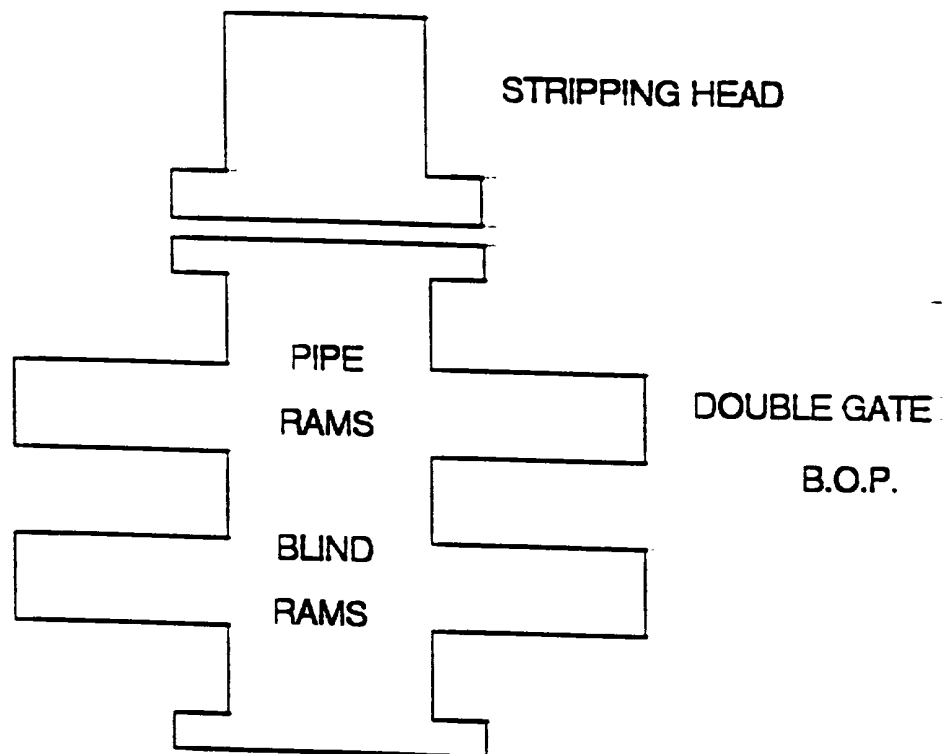


## RECOMPLETION PROCEDURE

### Navajo Indian B #2

1. Prepare location for workover. Install or replace anchors as necessary.
  2. MOL with workover rig, hold safety meeting, install safety signs and proper fire equipment at strategic points. Comply with all BLM, NMOCD, and MOI regulations.
  3. Rig up blow lines, record tubing and casing pressures and blow well down. NU 6" 3000 psi BOP and test. Load hole with water.
  4. TOOH with 1" tubing.
  5. PU 5 1/2" casing scraper and TIH with 2 3/8" 4.7# J-55 EUE tubing.
  6. TOOH. RU wireline unit and set a 5 1/2" CIBP at 2020'. Pressure test casing to 2500 psi for 15 minutes. Run logs.
  7. Perforate coal. Perforations to be picked from log.
  8. TIH with 2 3/8" tubing and swab wellbore dry. Check well for gas flow. Evaluate well overnight. Check well for buildup pressure and gas flow. Evaluate for fracture stimulation. A fracture stimulation procedure will be provided if required. TIH with 2-3/8" tubing and clean out to CIBP.
  9. When well is clean, land 2-3/8" tubing with a common pump seating nipple one joint off bottom. Land tubing near 2005'. Swab well in. Record final 30, 45 and 60 minute gauges on morning report. ND BOP. NU tree. RD and release rig.
  10. Shut well in for pressure build up. Obtain gas and water sample for analysis.
-

# WORKOVER / RECOMPLETION B.O.P. SCHEMATIC



MINIMUM: 6" 2000 PSI DOUBLE GATE B.O.P.  
MAXIMUM ANTICIPATED SHUT-IN WELLHEAD  
PRESSURE IS LESS THAN 2000 PSI