

UNITED STATES  
DEPARTMENT OF THE INTERIOR  
BUREAU OF LAND MANAGEMENT

FORM APPROVED  
Budget Bureau No. 1004-0135  
Expires: March 31, 1993

SUNDRY NOTICES AND REPORTS ON WELLS

Do not use this form for proposals to drill or to deepen or reentry to a different reservoir.  
Use "APPLICATION FOR PERMIT - " for such proposals

070 FARMINGTON, NM

1. Type of Well  
☐ Oil Well ☒ Gas Well ☐ Other

2. Name of Operator  
Amoco Production Company  
Attention: Pat Archuleta, Room 1205C

3. Address and Telephone No.  
P.O. Box 800, Denver, Colorado 80201 (303) 830-5217

4. Location of Well (Footage, Sec., T., R., M., or Survey Description)  
1090' FSL 1090FWL Sec. 17 T 27N R 8W Unit M

5. Lease Designation and Serial No.

NM-03380

6. If Indian, Allottee or Tribe Name

7. If Unit or CA, Agreement Designation

8. Well Name and No.

Florance D LS 9

9. API Well No.

3004506453

10. Field and Pool, or Exploratory Area

Blanco Mesaverde/So Blanco PC

11. County or Parish, State

San Juan New Mexico

12. CHECK APPROPRIATE BOX(S) TO INDICATE NATURE OF NOTICE, REPORT, OR OTHER DATA

TYPE OF SUBMISSION

- ☒ Notice of Intent  
☐ Subsequent Report  
☐ Final Abandonment Notice

TYPE OF ACTION

- ☐ Abandonment  
☒ Recompletion  
☐ Plugging Back  
☐ Casing Repair  
☐ Altering Casing  
☐ Other

- ☐ Change of Plans  
☐ New Construction  
☐ Non-Routine Fracturing  
☐ Water Shut-Off  
☐ Conversion to Injection  
☐ Dispose Water

(Note: Report results of multiple completion on Well Completion or Recompletion Report and Log form.)

13. Describe Proposed or Completed Operations (Clearly state all pertinent details, and give pertinent dates, including estimated date of starting any proposed work. If well is directionally drilled, give subsurface locations and measured and true vertical depths for all markers and zones pertinent to this work.)\*

Amoco Production Company requests permission to recomplete to Otero Chacra, commingle with existing Mesaverde and dual with Picture Cliffs per the attached procedures.

If you have any technical questions contact Mark Rothengerg at (303) 830-5612.

RECEIVED  
JAN 27 1997

OIL CON. DIV.  
DIST. 3

14. I hereby certify that the foregoing is true and correct

Signed Pat Archuleta Title Staff Assistant Date 01-13-1997

(This space for Federal or State office use)

Approved by \_\_\_\_\_ Title \_\_\_\_\_ Date \_\_\_\_\_  
Conditions of approval, if any:

APPROVED

JAN 23 1997

/s/ Duane W. Spencer

DISTRICT MANAGER

Title 18 U.S.C. Section 1001, makes it a crime for any person knowingly and willfully to make to any department or agency of the United States any false, fictitious, or fraudulent statements or representations as to any matter within its jurisdiction.

NMOC

\* See Instructions on Reverse Side

Hold C-104 For GHE

**Suggested Procedure:**

(NOTE: Well was worked on 7/10/96-7/15/96. See attached CRWS page).

1. Check location for anchors. Install if necessary. Test anchors.
2. MIRUSU. Record SITPs and CP. Blow down well. Kill with water, only if absolutely necessary.
3. Circulate fluids off of packer and TOH with 1 1/4" tubing. Trip out of hole with 2 3/8" tbg and packer. If packer can not be retrieved, cut or back off tubing as close to packer as possible and RIH and pluck packer using mill or drill out packer with metal muncher. Fish out remaining junk in hole, if any.
4. RIH with RBP and set at 4200'. RIH with tubing and packer and set packer at 3000'. Load casing (between RBP and packer) with water and test casing to 1000#. Isolate any leaks found, but do not perform remedial cement work until CBL has been run.
5. TOH with tbg and packer but leave water in place and Run GR/CBL/CCL from 4200'-3200' to ensure proper cement for fracture isolation. Relay CBL results to Mark Rothenberg and Fax log to continuous fax at (303-830-4276). Discuss any remedial cement procedures to repair casing or ensure fracture containment with Denver and perform necessary cement work.
6. Correlate GR to Schlumberger Electrical Log Gamma Ray Induction Log dated 4/5/58. Perf 1 JSPF over the following intervals:  

**3844-3850      3964-3974      3988-3992**
7. PU and TIH frac string and packer. Set packer at approx. 3200' (may be deeper depending on CBL and MIT) and Frac perfs according to frac procedure A.
8. Flow well back to tank as soon as possible on a 1/4" choke for 8 hours, then increase choke to 1/2" or larger depending on activity of well and sand or water production. Establish and record gas, water, oil rates and producing and shut-in TP and CPs. Obtain water and gas samples.
9. TOH with tubing and packer and RIH with scraper and c/o sand to RPB at 4200'. Retrieve RBP and TOOH.
10. Clean well out to PBTD.
11. TIH with 2 3/8" production string and 7 5/8" packer and land at original depth of 5246' (1/2 mule shoe on btm and a SN 1 JT off btm). Set packer at 3000'. TIH with 1 1/4 tubing and land at original depth of 2906'. (Remove any perforated joints, bad joints, and bull plugs from original strings). RDMOSU
12. Place well on production.

**Note: Since this procedure may involve recompletion and DRA expenditures, please be sure to label all invoices accordingly so that costs can be accounted for properly.**

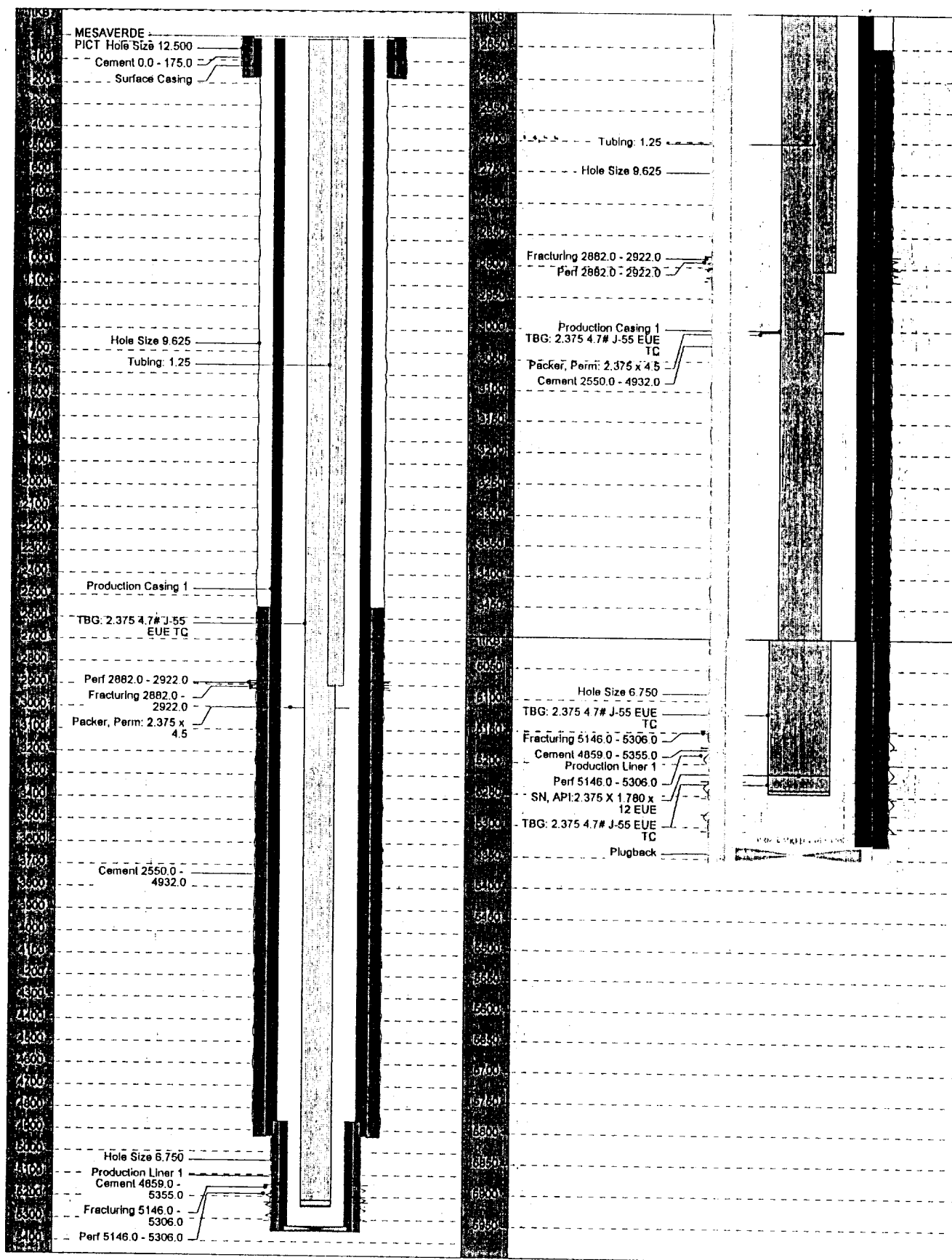
*If problems are encountered, please contact:*

**MARK ROTHENBERG**

**(W) (303) 830-5612**

**(H) (303) 841-8503**

**(P) (303) 553-6448**



District J  
PO Box 1980, Hobbs, NM 88241-1980

District II

811 South First, Artesia, NM 88210

District III

1000 Rio Brango Rd., Aztec, NM 87410

District IV

2040 South Pacheco, Santa Fe, NM 87505

State of New Mexico  
Energy, Minerals & Natural Resources Department

OIL CONSERVATION DIVISION  
2040 South Pacheco  
Santa Fe, NM 87505

RECEIVED  
BLM

97 JAN 17 PM 2:05

Form C-102

Revised October 18, 1994

Instructions on back

Submit to Appropriate District Office

State Lease - 4 Copies

Fee Lease - 3 Copies

☐ AMENDED REPORT

WELL LOCATION AND ACREAGE DEDICATION PLAT

<sup>1</sup> API Number 3004506453	<sup>2</sup> Pool Code 82329	<sup>3</sup> Pool Name Otero Chacra Gas Pool
<sup>4</sup> Property Code 000529	<sup>5</sup> Property Name Florance D LS	<sup>6</sup> Well Number 9
<sup>7</sup> OGRID No. 000778	<sup>8</sup> Operator Name Amoco Production Company	<sup>9</sup> Elevation 6792'

<sup>10</sup> Surface Location

UL or lot no.	Section	Township	Range	Lot Idn	Feet from the	North/South line	Feet from the	East/West line	County
M	17	27N	8W		1090	South	1090	West	San Juan

<sup>11</sup> Bottom Hole Location If Different From Surface

UL or lot no.	Section	Township	Range	Lot Idn	Feet from the	North/South line	Feet from the	East/West line	County
<sup>12</sup> Dedicated Acres 160	<sup>13</sup> Joint or Infill	<sup>14</sup> Consolidation Code	<sup>15</sup> Order No.						

NO ALLOWABLE WILL BE ASSIGNED TO THIS COMPLETION UNTIL ALL INTERESTS HAVE BEEN CONSOLIDATED  
OR A NON-STANDARD UNIT HAS BEEN APPROVED BY THE DIVISION

16				<b><sup>17</sup> OPERATOR CERTIFICATION</b> I hereby certify that the information contained herein is true and complete to the best of my knowledge and belief.  <i>Pat Archuleta</i> Signature Pat Archuleta Printed Name Staff Assistant Title Jan. 13, 1997 Date
				<b><sup>18</sup> SURVEYOR CERTIFICATION</b> I hereby certify that the well location shown on this plat was plotted from field notes of actual surveys made by me or under my supervision, and that the same is true and correct to the best of my belief.  Oct. 17, 1957 Date of Survey Signature and Seal of Professional Surveyer:  Certificate Number