

submitted in lieu of Form 3160-5

UNITED STATES
DEPARTMENT OF THE INTERIOR
BUREAU OF LAND MANAGEMENT

Sundry Notices and Reports on Wells

1. Type of Well GAS	5. Lease Number SF-077974
2. Name of Operator MERIDIAN OIL	6. If Indian, All. or Tribe Name
3. Address & Phone No. of Operator PO Box 4289, Farmington, NM 87499 (505) 326-9700	7. Unit Agreement Name
4. Location of Well, Footage, Sec., T, R, M 990'FNL, 990'FWL Sec.18, T-27-N, R-9-W, NMPM	8. Well Name & Number Lodewick #1
	9. API Well No.
	10. Field and Pool Fulcher Kutz PC/ Basin Ft Coal
	11. County and State SanJuan Co, NM

12. CHECK APPROPRIATE BOX TO INDICATE NATURE OF NOTICE, REPORT, OTHER DATA

Type of Submission

☒ Notice of Intent
☐ Subsequent Report
☐ Final Abandonment

Type of Action

<input type="checkbox"/> Abandonment	<input type="checkbox"/> Change of Plans
<input checked="" type="checkbox"/> Recompletion	<input type="checkbox"/> New Construction
<input type="checkbox"/> Plugging Back	<input type="checkbox"/> Non-Routine Fracturing
<input type="checkbox"/> Casing Repair	<input type="checkbox"/> Water Shut off
<input type="checkbox"/> Altering Casing	<input type="checkbox"/> Conversion to Injectio
<input type="checkbox"/> Other -	

13. Describe Proposed or Completed Operations

It is intended to add and complete by perforating and fracture stimulation the Fruitland Coal formation to this wellbore. Production from the Pictured Cliffs and Fruitland Coal will be commingled. Application is being made to the NMOCD for commingling.

OIL CON
DIST

14. I hereby certify that the foregoing is true and correct

Signed [Signature] (SD) Title Regulatory Affairs Date 12/30/93

(This space for Federal or State Office use)

APPROVED BY _____ Title _____

CONDITION OF APPROVAL, if any:

DISTRICT MANAGER

Date _____

NMOCD

Held C-1007 For USL

Schedule to Accompany
District Office
State Lease - 4 copies
Fee Lease - 3 copies

State of New Mexico
Energy, Minerals and Natural Resources Department

Form C-122 -
Revised 1-1-89

OIL CONSERVATION DIVISION

P.O. Box 2088
Santa Fe, New Mexico 87504-2088

DISTRICT I
P.O. Box 1900, Hobbs, NM 88240

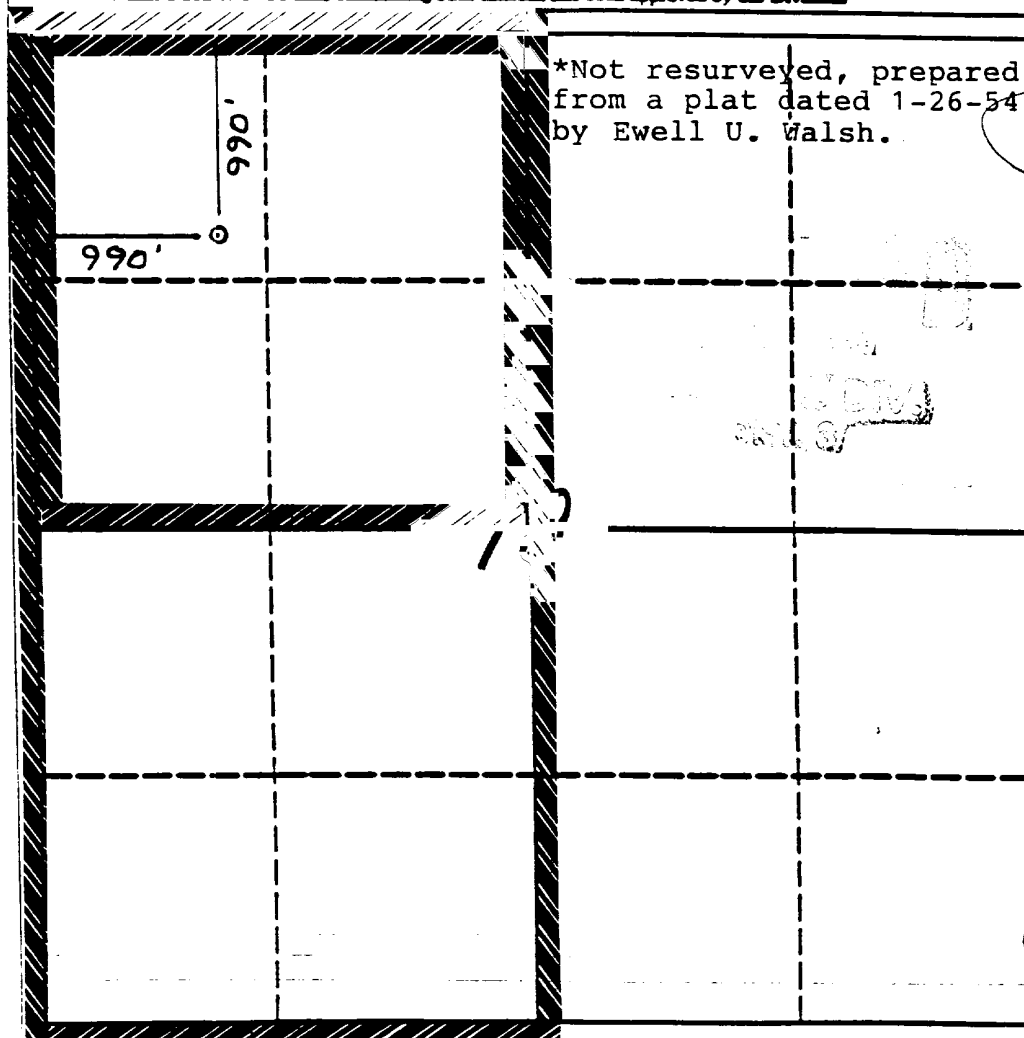
DISTRICT II
P.O. Drawer 00, Artesa, NM 88210

DISTRICT III
1000 Rio Rancho Rd., Aztec, NM 87410

WELL LOCATION AND ACREAGE DEDICATION PLAT

All Distances must be from the outer boundaries of the section

Operator Meridian Oil Inc.			Lease Lodewick		Well No. 1
Unit Letter D	Section 18	Township 27 North	Range 9 West	County San Juan	
Actual Four-Corner Location of Well: 990 feet from the North line and 990 feet from the West line					
Ground Level Elev. 6186' DF	Producing Formation Fruitland Coal/Pic.Cliffs		Foot Basin/Fulcher Kutz		Dedicated Acreage 322.4/161.32 Acres
<p>1. Outline the acreage dedicated to the subject well by colored pencil or ink lines drawn on the plat below.</p> <p>2. If more than one lease is dedicated to the well, outline each and identify the ownership thereof (both as to working interest and royalty).</p> <p>3. If more than one lease of different ownership is dedicated to the well, have the interest of all owners been consolidated by commutation, assignment, force-pooling, etc.? <input type="checkbox"/> Yes <input type="checkbox"/> No If answer is "yes" type of consolidation _____ If answer is "no" list the owners and what developments which have actually been consolidated. (Use reverse side of this form if necessary.) _____ No allowable well be assigned to the well until all interests have been consolidated (by commutation, assignment, force-pooling, or otherwise) or until a non-consent suit, eliminating such interest, has been approved by the Division.</p>					



OPERATOR CERTIFICATION

I hereby certify that the information contained herein is true and complete to the best of my knowledge and belief.

Peggy Bradfield
Signature

Peggy Bradfield

Printed Name

Regulatory Representative

For use

Meridian Oil Inc.

Company

12-30-93

Date

SURVEYOR CERTIFICATION

I hereby certify that the well location shown on this plat was plotted from field notes of actual surveys made by me or under my supervision, and that the same is true and correct to the best of my knowledge and belief. 1-3-94

Don Sargent C. EDWARDS

Needle Creek

Signature
Professional Surveyor

9857

9857

Pertinent Data Sheet - Lodewick #1

Location: 990' FNL, 990' FWL, Section 18, T27N, R09W, San Juan County, New Mexico

Field: Fulcher Kutz Pictured Cliffs

Elevation: 6186' GL

TD: 2168'

PBTD: 2168'

Completed: 04-11-53

Spud Date: 03-20-53

DP #: 50877A

Casing Record:

<u>Hole Size</u>	<u>Csg Size</u>	<u>Wt. & Grade</u>	<u>Depth Set</u>	<u>Cement</u>	<u>Top/Cement</u>
	8 5/8"	32.0# 8 rd	101'	75 sxs	Surface/Circ
	5 1/2"	14.0# 8 rd J&L	2084'	150 sxs	

Tubing Record:

<u>Tbg Size</u>	<u>Wt. & Grade</u>	<u>Depth Set</u>
1"	1.7#	2156'

Formation Tops:

Ojo Alamo: 1125'
Kirtland: 1285'
Fruitland: 1911'
Pictured Cliffs: 2080'

Logging Record:

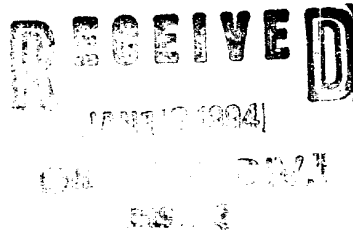
Stimulation:

Open Hole: Shot w/195 quarts SNG, 2090' - 2158'

Workover History:

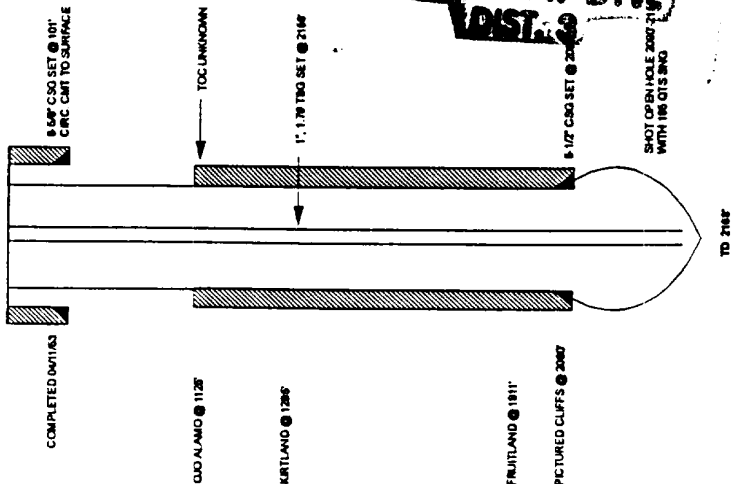
Production History:

Transporter: EPNG



LODEWICK #1

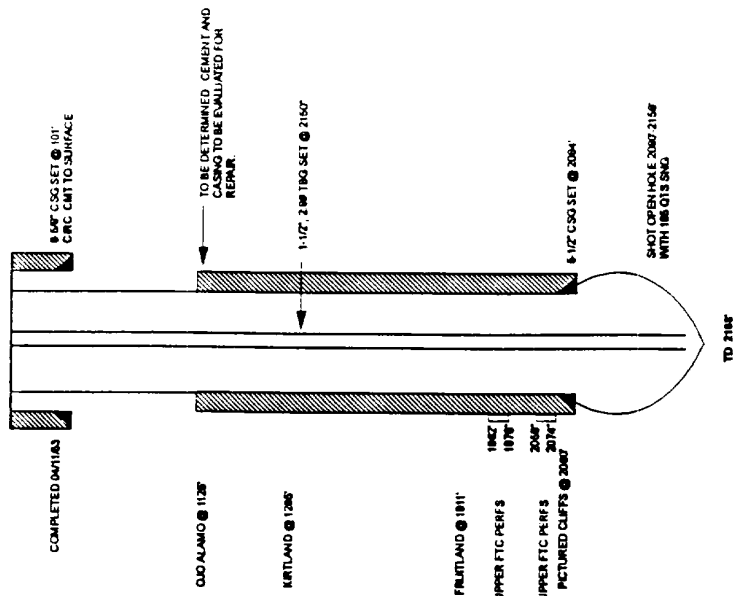
CURRENT
FULCHER RUTZ PICTURED CLIFFS
UNIT D, SEC 18, T27N, R99W, SAN JUAN COUNTY, NM



RECEIVED
JAN 2 1994
OIL CON. DIV.
DIST. 3

LODEWICK #1

PROPOSED
FULCHER RUTZ PICTURED CLIFFS
UNIT D, SEC 18, T27N, R99W, SAN JUAN COUNTY, NM



LODEWICK #1

Recommend Completion Procedure

1. Test rig anchors and repair if necessary. Install 2-400 bbl frac tanks on location and fill with 2% KCl water. Filter all water to 25 microns. Heat water as required by weather.
2. MOL and RU. Comply to all NMOCD, BLM and MOI rules & regulations. Hold safety meeting. ND wellhead. NU BOP. Test operation of rams. NU two relief lines.
3. TOOH w/ 2156' of 1" 1.7# tbg, tally and inspect.
4. TIH w/ 4-3/4" bit on 2-3/8" work-string and clean out to open hole TD @ 2168'. TOOH.
5. TIH w/ 4-3/4" bit and 5-1/2" casing scraper on 2-3/8" tbg and clean out to 5-1/2" casing shoe @ 2084'. Load hole w/ 15 bbls 2% KCl water. TOOH.
6. RU & RIH w/ CNL-CCL-GR and log from casing shoe @ 2084' to 1700'
7. RIH and wireline set 5-1/2" CIBP @ 2078'. Correlate w/ GR-CCL-CNL to ensure CIBP is set between PC and basal FTC. Load hole w/ water. TOOH.
8. TIH w/ fullbore packer and 2-3/8" tubing, load hole w/ 2% KCl water, set packer @2060', test CIBP to 3000 psi for 15 minutes. Test tubing/casing annulus to 500 psi for 15 minutes. Equalize pressure and unseat packer. TOOH.
9. RU wireline and run CBL from PBTD (2078') to 150'. If CBL appears inadequate, re-run log with 500 psi surface pressure. If bond still appears unacceptable, contact production engineering. Send copy of CBL to production engineering.
10. Refill the 400 bbl tanks on location with 2% KCl water in preparation for Fruitland coal fracs. Filter all water to 25 microns. Heat water as required by weather.

CL CON. DIV.
DIST. 3

LODEWICK #1
Recommend Completion Procedure
NW/4 Section 18 T27N R09W
Page 2

*****LOWER COAL*****

11. RU wireline and perf the following coal interval w/ 3-3/8" HSC w/ 16.0 gram charges @ 4 SPF (correlate depths to CNL-CCL-GR log).

2058-2074'

Total: 16 feet: 64 holes

12. TIH w/ 3-1/2" 9.3# N-80 FJ frac string and set fullbore pkr @ 2000'. Load backside w/ 2% KCl water.
13. RU treatment company for frac. Hold safety meeting with all personnel. Pressure test surface lines to 5000 psi. Fracture treat lower coal according to attached schedule w/ 70Q foam at 20 BPM with 85,000 lbs of 20/40 mesh Arizona sand. Tag all sand w/ 0.4 mCi/1000# Ir-192 tracer. Flush with 16 bbls 2% KCl water. Estimated treating pressure is 1700 psi. MAXIMUM PRESSURE IS LIMITED TO 4000 PSII Monitor backside and braden head pressures during frac. Monitor bottomhole and surface treating pressure, rate, foam quality and sand concentration with computer van. Frac during daylight only.
14. SI well for 3 hours for gel break.
15. After gel break, open well through choke manifold & monitor flow. Flow @ 20 bbls/hr, or less if sand is observed.
16. Refill 400 bbl frac tanks with 2% KCl water and filter to 25 microns. Heat water as required by weather.
17. When well ceases to flow, Release packer, TIH w/ pkr and frac string to 2050' to check for fill. TOOH. TIH and set 5-1/2" RBP @ 2000'.

FIVE D

1994

DIV. 1
DIST. 3

LODEWICK #1
Recommend Completion Procedure
NW/4 Section 18 T27N R09W
Page 3
*****UPPER COAL*****

RECEIVED
JAN 2 1994
OIL CON.
LAST 3

18. RU wireline and perf the following coal interval w/ 3-3/8" HSC w/ 16.0 gram charges @ 4 SPF (correlate depths to CNL-CCL-GR log).

1962' - 1976'

Total: 14 feet: 56 holes

19. TIH w/ frac string and set pkr @ 1990'. Pressure test BP to 3000 psi surface pressure.
20. Release pkr, PU to 1900', set pkr @ approx 1900', and load backside.
21. RU treatment company for frac. Hold safety meeting with all personnel. Pressure test surface lines to 5000 psi. Fracture treat upper coal according to attached schedule w/ 70Q foam at 30 BPM with 75,000 lbs of 20/40 mesh Arizona sand. Tag all sand w/ 0.4 mCi/1000# Ir-192 tracer. Flush with 15 bbls 2% KCl water. Estimated treating pressure is 2300 psi. **MAXIMUM PRESSURE IS LIMITED TO 4000 PSII** Monitor backside and braden head pressures during frac. Monitor bottomhole and surface treating pressure, rate, foam quality and sand concentration with computer van. Frac during daylight only.
22. SI well for 3 hours for gel break.
23. After gel break, open well through choke manifold & monitor flow. Flow @ 20 bbls/hr, or less if sand is observed.
24. When well ceases to flow, TOOH w/ pkr and frac string. TIH w/ retrieving head on 2-3/8" tbg and clean out upper zone until sand flow stops. Take Pitot gauge before releasing BP. Release RBP set @ 2000' and TOOH.
25. TIH w/ 2 3/8" tbg open ended and clean out lower coal until sand stops. After clean up, flow test the Coal for 24 hrs, taking pitot gauges every 6 hrs. Take final Pitot gauge and gas & water samples. TOOH
26. TIH w/ 2-3/8" tbg and 4 3/4" bit, clean out to PBTD. Blow well clean. Drill out CIPB set @ 2078', clean out to open hole TD. TOOH laying down 2-3/8" tbg.
27. RU wireline and run After - Frac - GR log from 2150' to 1800'.
28. TIH w/ 2150' of 1-1/2" tbg w/ standard seating nipple (ID = 1.375") one jt off bottom and pump-off plug on bottom. Land tbg string.
29. ND BOP and NU independent wellhead. Pump off plug. Take final Pitot gauge. Rig down & release rig.

Approve:

PUBA
J. A. Howieson

VENDORS:

Wireline:	Petro	325-6669
Fracturing:	HOWCO	325-3575
RA Tagging:	Protechnics	326-7133
After Frac	Petro	325-6669