

NEW MEXICO OIL CONSERVATION COMMISSION
MULTI-POINT BACK PRESSURE TEST FOR GAS WELL

Form C-122
Revised 12-1-55

Pool Basin Dakota		Formation Dakota			County San Juan	
Initial X	Annual	Special		Date of Test 7-12-66		
Company Tenneco Oil Co.		Lease Florance			Well No. 62	
Unit C	Sec. 20	Twp. 27	Range 8	Purchaser		
Casing 4 1/2	Wt.	I.D.	Set at 7445	Perf. 7189	To 7383	
Tubing 2 3/8	Wt.	I.D.	Set at 7360	Perf.	To	
Gas Flow:	From	To	L	G .65	GL	Bar. Press. 12.0
Producing Through:		Casing	Tubing X	Type Well - Single -- Braden head - G.G. or G.O. Dual Single Gas		
Date of Completion		Packer	Reservoir Temp. 180			

OBSERVED DATA

Tested Through:						Type of Taps			
Prover <input checked="" type="checkbox"/>		Choke <input type="checkbox"/>		Meter <input type="checkbox"/>					
FLOW DATA					TUBING DATA		CASING DATA		DURATION OF FLOW HR.
(Prover) (Line) Size	(Choke) (Orifice) Size	Press. psig.	Diff. h _w	Temp. °F.	Press. psig.	Temp. °F.	Press. psig.	Temp. °F.	
	3/4				2025		2014		
					401	60	903		3 Hrs

FLOW CALCULATIONS

No.	Coefficient (24 Hour)	$\sqrt{h_w P_f}$	Pressure psia	Flow Temp. Factor F_t	Gravity Factor F_g	Compress. Factor F_{pv}	Rate of Flow Q-MCF PD @ 15,025 psia
1.	12.3650		413	1.000	.9608	1.044	5119
2.							
3.							
4.							
5.							

PRESSURE CALCULATIONS

Liquid Hydrocarbon Ratio _____ cf/bbl. Specific Gravity Separator Gas _____
 Gravity of Liquid Hydrocarbons _____ deg. Specific Gravity Flowing Fluid _____
 P_c _____ (1-e^{-S}) P_c **2037** P_c^2 **4149369**

No.	$\frac{P_w}{P_t}$ psia	P_t^2	$F_c Q$	$(F_c Q)^2$	$(F_c Q)^2 (1-e^{-S})$	P_w^2	$P_c^2 - P_w^2$	Cal $\frac{P_w}{P_c}$	$\frac{P_w}{P_c}$
1.	915					837225	3312144		
2.									
3.									
4.									
5.									

ABSOLUTE POTENTIAL: 6061 MCFPD; n .75 1.1841

COMPANY Tenneco Oil Company WITNESSED _____

ADDRESS P. O. Box 1714, Durango, Colorado COMPANY _____

AGENT AND TITLE J. E. Massey **J. E. Massey**
District Production Engineer

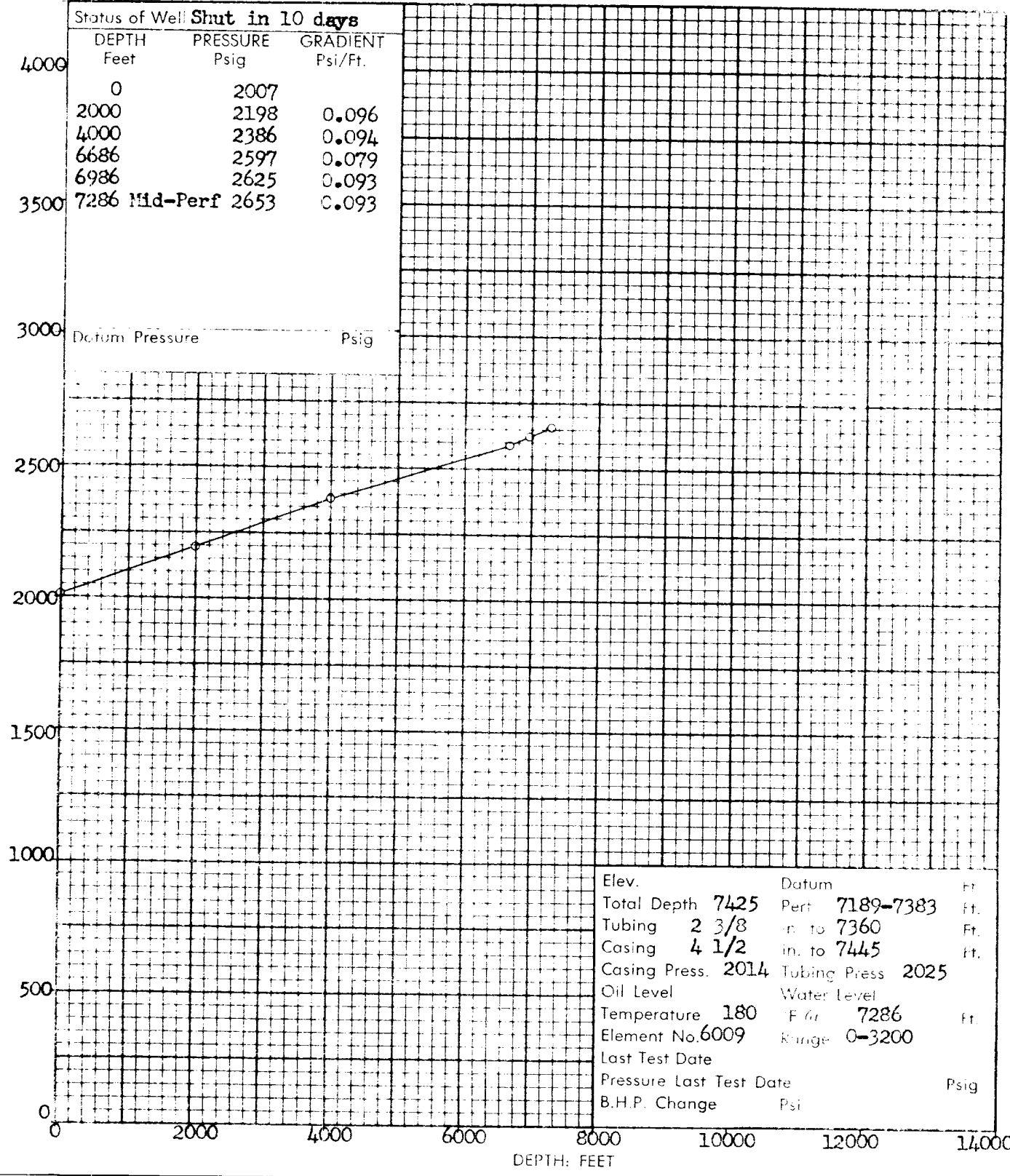


Company TENNECO OIL COMPANY Lease FLORANCE Well No. 62
Field BASIN DAKOTA County SAN JUAN State NEW MEXICO
Formation DAKOTA Test Date JULY 12, 1966

Status of Well **Shut in 10 days**

DEPTH Feet	PRESSURE Psig	GRADIENT Psi/Ft.
0	2007	
2000	2198	0.096
4000	2386	0.094
6686	2597	0.079
6986	2625	0.093
7286 Mid-Perf	2653	0.093

PRESSURE POUNDS PER SQUARE INCH GAUGE



Elev.	Datum	Ft.
Total Depth 7425	Perf 7189-7383	Ft.
Tubing 2 3/8	in. to 7360	Ft.
Casing 4 1/2	in. to 7445	Ft.
Casing Press. 2014	Tubing Press 2025	
Oil Level	Water Level	
Temperature 180	F ₆₀ 7286	Ft.
Element No. 6009	Range 0-3200	
Last Test Date		
Pressure Last Test Date		Psig
B.H.P. Change	Psi	

DEPTH: FEET