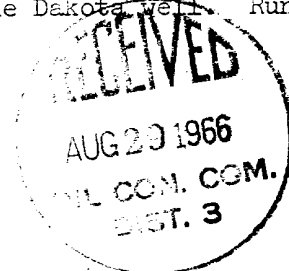


UNITED STATES
DEPARTMENT OF THE INTERIOR
GEOLOGICAL SURVEY

APPLICATION FOR PERMIT TO DRILL, DEEPEN, OR PLUG BACK

1a. TYPE OF WORK DRILL <input checked="" type="checkbox"/> DEEPEN <input type="checkbox"/> PLUG BACK <input type="checkbox"/>		5. LEASE DESIGNATION AND SERIAL NO. NM-03380		
b. TYPE OF WELL OIL WELL <input type="checkbox"/> GAS WELL <input checked="" type="checkbox"/> OTHER <input type="checkbox"/>		6. IF INDIAN, ALLOTTEE OR TRIBE NAME		
2. NAME OF OPERATOR Tenneco Oil Company		7. UNIT AGREEMENT NAME		
3. ADDRESS OF OPERATOR P. O. Box 1714, Durango, Colorado		8. FARM OR LEASE NAME Florance		
4. LOCATION OF WELL (Report location clearly and in accordance with any State requirements.)* At surface 1135 FSL 1850 FEL Unit 0 At proposed prod. zone		9. WELL NO. 67		
14. DISTANCE IN MILES AND DIRECTION FROM NEAREST TOWN OR POST OFFICE*		10. FIELD AND POOL, OR WILDCAT Basin Dakota		
15. DISTANCE FROM PROPOSED* LOCATION TO NEAREST PROPERTY OR LEASE LINE, FT. (Also to nearest Grig. unit line, if any)		11. SEC., T., R., M., OR BLK. AND SURVEY OR AREA Sec. 19, T-27N, R-8-W		
16. NO. OF ACRES IN LEASE 320		12. COUNTY OR PARISH San Juan		
17. NO. OF ACRES ASSIGNED TO THIS WELL 320 E/2		13. STATE New Mexico		
18. DISTANCE FROM PROPOSED LOCATION* TO NEAREST WELL, DRILLING, COMPLETED, OR APPLIED FOR, ON THIS LEASE, FT.		20. ROTARY OR CABLE TOOLS Rotary		
21. ELEVATIONS (Show whether DF, RT, GR, etc.) 6078 Gr.		22. APPROX. DATE WORK WILL START* Sept. 3, 1966		
23. PROPOSED CASING AND CEMENTING PROGRAM				
SIZE OF HOLE	SIZE OF CASING	WEIGHT PER FOOT	SETTING DEPTH	QUANTITY OF CEMENT
12 1/4	8 5/8	20 & 24#	400	Cement to surface - 200 sx
7 7/8	4 1/2	10.5 & 11.6#	6755	1st stage - 235 sx
				2nd stage - Cement to surface

We plan to drill to approximate TD 6755. Run IES and GR Density logs. Run casing as shown above w/stage collar set approximately 300' below bottom of Mesaverde. WOC. Perforate and frac and complete as a single Dakota well. Run 2 3/8" BUE tubing and conduct deliverability tests.



IN ABOVE SPACE DESCRIBE PROPOSED PROGRAM: If proposal is to deepen or plug back, give data on present productive zone and proposed new productive zone. If proposal is to drill or deepen directionally, give pertinent data on subsurface locations and measured and true vertical depths. Give blowout preventer program, if any.

24. Harold C. Nichols TITLE Senior Production Clerk DATE 8/25/66
SIGNED Harold C. Nichols
(This space for Federal or State office use)

PERMIT NO. 7d APPROVAL DATE AUG 26 1966
APPROVED BY 7d TITLE U. S. GEOLOGICAL SURVEY
COMMENTS OF APPROVAL, IF ANY:
DISTRIBUTION:
5-USGS
1-Continental
1-File

*See Instructions On Reverse Side

**NEW MEXICO OIL CONSERVATION COMMISSION
WELL LOCATION AND ACERAGE DEDICATION PLAT**

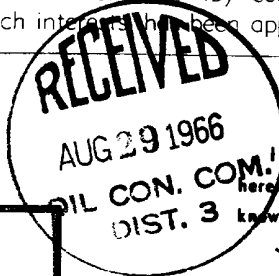
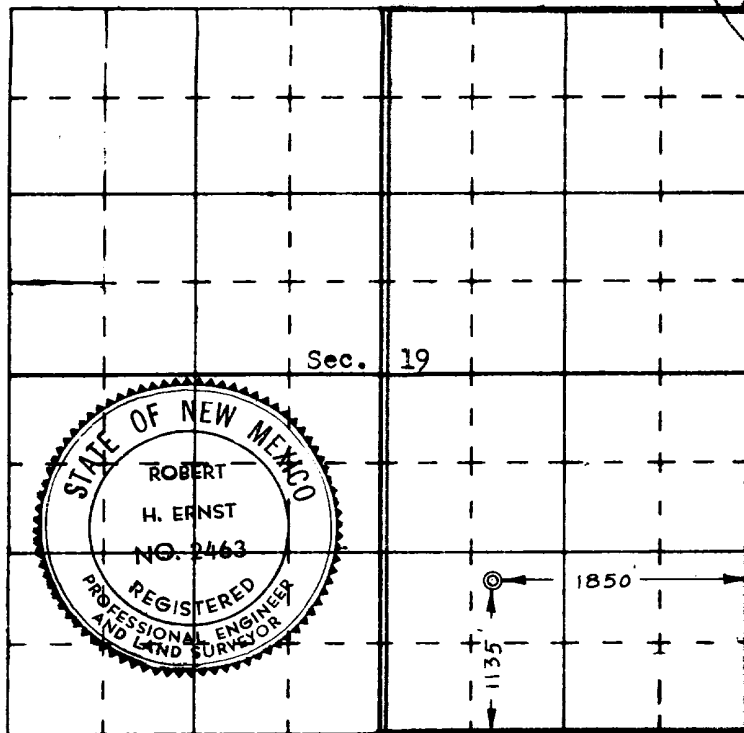
All distances must be from the outer boundaries of the Section

Operator TENNECO OIL COMPANY			Lease FLORANCE		Well No. 67
Unit Letter 0	Section 19	Township 27 North	Range 8 West	County San Juan	
Actual Footage Location of Well: 1135 feet from the South line and 1850 feet from the East line					
Ground Level Elev. 6078' ungraded		Producing Formation Dakota	Pool Basin Dakota	Dedicated Acreage: E/2 320 Acres	

1. Outline the acreage dedicated to the subject well by colored pencil or hachure marks on the plat below.
2. If more than one lease is dedicated to the well, outline each and identify the ownership thereof (both as to working interest and royalty).
3. If more than one lease of different ownership is dedicated to the well, have the interests of all owners been consolidated by communitization, unitization, force-pooling, etc?
☐ Yes ☐ No If answer is "yes," type of consolidation

If answer is "no," list the owners and tract descriptions which have actually consolidated. (Use reverse side of this form if necessary)

No allowable will be assigned to the well until all interests have been consolidated (by communitization, unitization, forced-pooling, or otherwise) or until a non standard unit, eliminating such interests, has been approved by the Commission.



CERTIFICATION

I hereby certify that the information contained herein is true and complete to the best of my knowledge and belief.

Harold C. Nichols
 Name
 Harold C. Nichols
 Position
 Senior Production Clerk
 Company
 Tenneco Oil Company
 Date
 August 25, 1966

I hereby certify that the well location shown on this plat was plotted from field notes of actual surveys made by me or under my supervision, and that the same is true and correct to the best of my knowledge and belief.

14 July 1966
 Date Surveyed
Robert H. Ernst
 Registered Professional Engineer
 and/or Land Surveyor
 Robert H. Ernst
 N. Mex. PE & LS 2463

Certificate No.

**ERNST ENGINEERING CO.
DURANGO, COLORADO**