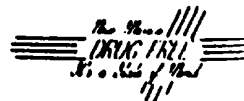




STATE OF NEW MEXICO  
ENERGY, MINERALS and NATURAL RESOURCES DIVISION  
OIL CONSERVATION DIVISION  
AZTEC DISTRICT OFFICE



BRUCE KING  
GOVERNOR

ANITA LOCKWOOD  
CABINET SECRETARY

1000 RIO BRAZOS ROAD  
AZTEC, NEW MEXICO 87410  
(505) 334-6178

Date: 4/10/95

Oil Conservation Division  
P.O. Box 2088  
Santa Fe, NM 87504-2088

RE: Proposed MC \_\_\_\_\_  
Proposed NSL \_\_\_\_\_  
Proposed WFX \_\_\_\_\_  
Proposed NSP \_\_\_\_\_

Proposed DHC X \_\_\_\_\_  
Proposed SWD \_\_\_\_\_  
Proposed PMX \_\_\_\_\_  
Proposed DD \_\_\_\_\_

Gentlemen:

I have examined the application received on 4/3/95

for the Amor Shawnee 467  
OPERATOR LEASE & WELL NO.

0-19-27N-8W and my recommendations are as follows:  
UL-S-T-R

Approve after review of bottom hole pressures.  
Allocation should be made on the basis of  
production.

Yours truly

[Signature]



**Southern**

**Rockies**

**Business**

**Unit**

March 31, 1995

Mr. William J. LeMay, Director  
New Mexico Oil Conservation Division  
2040 S. Pacheco Street  
P. O. Box 6429  
Santa Fe, NM 87505

**Application for Exception to Rule 303-A**  
**Downhole Commingling**  
**Florance #67 Well**  
**1135' FSL, 1850' FEL, Section 19-T27N-R8W**  
**Blanco Mesaverde and Basin Dakota and Otero Chacra Pools**  
**San Juan County, New Mexico**

**RECEIVED**  
APR - 3 1995

**OIL CON. DIV.**  
**DIST. 3**

Amoco Production Company hereby requests administrative approval to downhole commingle production from the Blanco Mesaverde, Basin Dakota and Otero Chacra Pools in the Florance #67 well referenced above. The Florance #67 well was originally completed in the Dakota formation. We plan to recompleate the well to the Mesaverde and Chacra with all three zones open in the wellbore. The three zones are expected to produce at a total commingled rate of about 415 MCFD. The ownership (WI, RI, ORRI) of these pools is identical in this wellbore. Downhole commingling will offer an economical method of production while protecting against reservoir damage, waste of reserves and violation of correlative rights. Offset operators to this well will receive a copy of this application by certified mail.

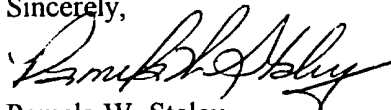
The allocation method that we plan to use for this commingled well is as follows. We plan to determine the stabilized rate from the Dakota formation prior to the recompletion of the Mesaverde and Chacra formations. To estimate the contribution from the Mesaverde and Chacra formations we have studied the surrounding initial producing rates and sustained production rates in all three formations in nearby wells. Based on those findings, we propose to allocate 10% of the production to the Dakota formation, 36% of the production to the Chacra formation and 54% of the production to the Mesaverde formation. The actual commercial value of the commingled production will not be less than the sum of the values of the production from each of the common sources of supply.

Attached to aid in your review are plats showing the location of the well and offset wells in the same formation, a historical production plot and a C-102 for each formation. This spacing unit is on a federal lease NM-03380. A copy of the application will be sent to the BLM requesting their consent.

---

Should you have questions concerning this matter, please contact me at (303) 830-5344.

Sincerely,



Pamela W. Staley

Enclosures

cc: Lara Kwartin  
Gail Jefferson

Frank Chavez, Supervisor  
NMOCD District III  
1000 Rio Brazos Road  
Aztec, NM 87410

Duane Spencer  
Bureau of Land Management  
1235 La Plata Hwy  
Farmington, NM 87401

LIST OF ATTACHMENTS

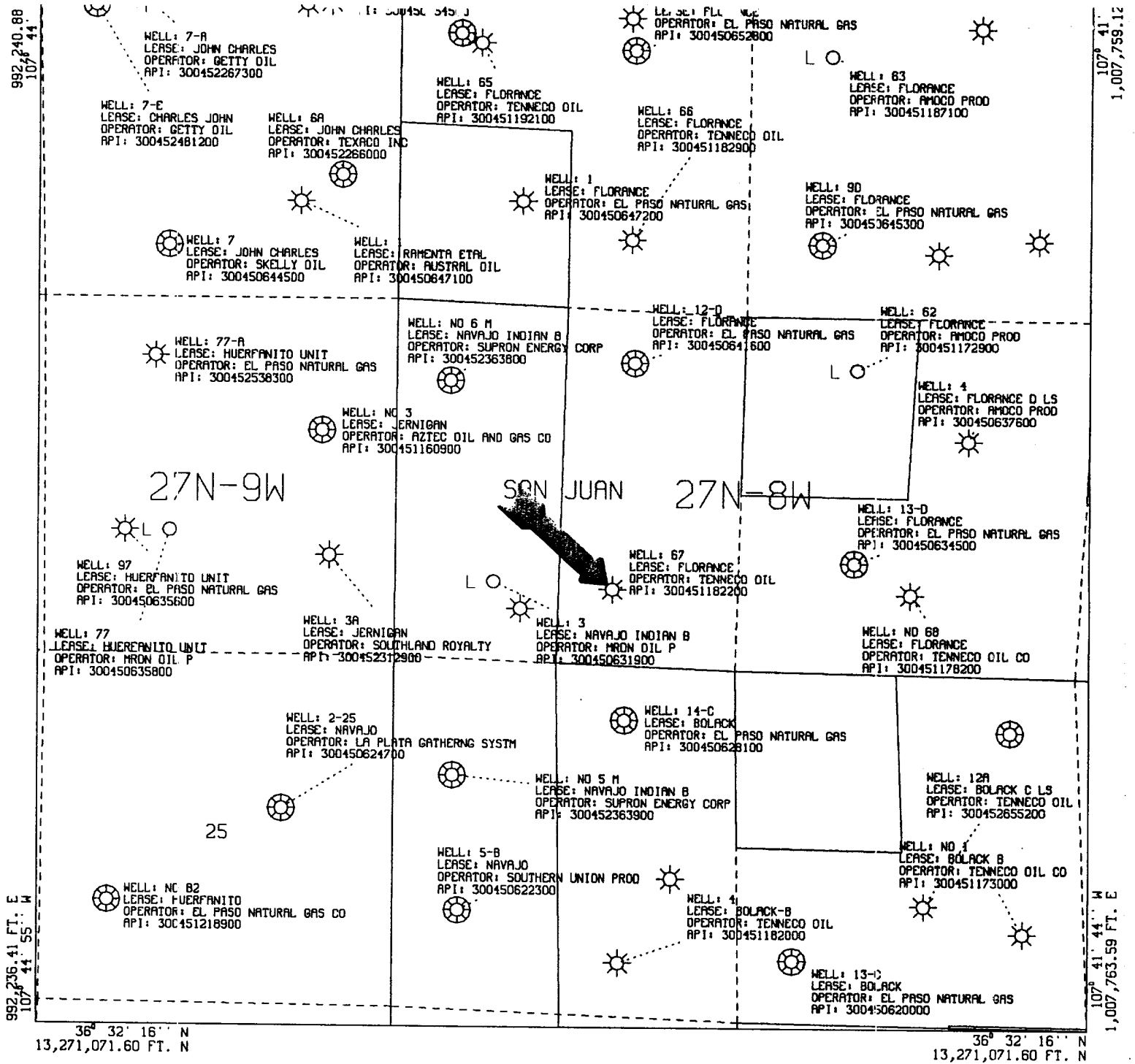
Florance #67

- 1 List of offset operators and their addresses
- 2 9 section plat showing Dakota, Mesaverde, Chacra offset wells
- 3 Form C-102 for the Blanco Mesaverde formation
- 4 Form C-102 for the Basin Dakota formation
- 5 Form C-102 for the Otero Chacra formation
- 6 Pressure information for all three horizons
- 7 Historical production Curve for the Dakota formation
- 8 Recent production Curve for the Dakota formation

---

LIST OF ADDRESSES FOR OFFSET OPERATORS  
Florance #67

- 1 Meridian Oil, Inc.  
P.O. Box 4289  
Farmington, NM 87401
  - 2 Texaco E&P, Inc.  
P.O. Box 2100  
Denver, CO 80201
  - 3 Mobil Production Texas and New Mexico, Inc.  
P.O. Box 890391  
Dallas, Texas 75389-0391
  - 4 Southland Royalty Company  
P.O. Box 840656  
Dallas, Texas 75284
  - 5 Turner Production Co.  
4925 Greenville Ave.  
One Energy Square Suite 852  
Dallas, Texas 75206-4008
-



All geological and geophysical data, including the interpretation thereof, appearing on this map is the private and confidential property of Amoco Production Company. The publication or reproduction thereof without the written permission of said Company is strictly prohibited.

# AMOCO PRODUCTION COMPANY PLAT MAP

POLYCONIC CENTRAL MERIDIAN - 107° 43' 20" W LON  
SPHEROID - 6

FLORANCE 67  
DK MV CK WELLS  
SCALE 1 IN. = 2,000 FT. JAN 11, 1995

District I  
1000 Rte 1220, Hobbs, NM 88241-1980  
District II  
PO Drawer DD, Artesia, NM 88211-0719  
District III  
1000 Rte Brazos Rd., Aztec, NM 87410  
District IV  
PO Box 2088, Santa Fe, NM 87504-2088

State of New Mexico  
Energy, Minerals & Natural Resources Department

OIL CONSERVATION DIVISION  
PO Box 2088  
Santa Fe, NM 87504-2088

Form C-102  
Revised February 21, 1994  
Instructions on back  
Submit to Appropriate District Office  
State Lease - 4 Copies  
Fee Lease - 3 Copies

☐ AMENDED REPORT

WELL LOCATION AND ACREAGE DEDICATION PLAT

1 API Number 30045 11822		2 Pool Code 72319		3 Pool Name Blanco Mesa Verde		
4 Property Code		5 Property Name Florance			6 Well Number # 67	
7 OGRID No. 000778		8 Operator Name Amoco Production Company			9 Elevation 6078	

10 Surface Location

UL or lot no. O	Section 19	Township 27 N	Range 8 W	Lot Idn O	Feet from the 1135	North/South line South	Feet from the 1850	East/West line East	County San Juan
--------------------	---------------	------------------	--------------	--------------	-----------------------	---------------------------	-----------------------	------------------------	--------------------

11 Bottom Hole Location If Different From Surface

UL or lot no.	Section	Township	Range	Lot Idn	Feet from the	North/South line	Feet from the	East/West line	County
---------------	---------	----------	-------	---------	---------------	------------------	---------------	----------------	--------

12 Dedicated Acres 320	13 Joint or Infill	14 Consolidation Code	15 Order No.
---------------------------	--------------------	-----------------------	--------------

NO ALLOWABLE WILL BE ASSIGNED TO THIS COMPLETION UNTIL ALL INTERESTS HAVE BEEN CONSOLIDATED  
OR A NON-STANDARD UNIT HAS BEEN APPROVED BY THE DIVISION

16  <b>RECEIVED</b> OIL CON. DIV. BML 3			17 OPERATOR CERTIFICATION I hereby certify that the information contained herein is true and complete to the best of my knowledge and belief  <i>Lois Raeburn</i> Signature Lois Raeburn Printed Name Business Assistant Title 12-14-94 Date	
			18 SURVEYOR CERTIFICATION I hereby certify that the well location shown on this plat was plotted from field notes of actual surveys made by me or under my supervision, and that the same is true and correct to the best of my belief. 14 July 1966 Date of Survey Signature and Seal of Professional Surveyor:  On File 2463 Certificate Number	

NEW MEXICO OIL CONSERVATION COMMISSION  
WELL LOCATION AND ACERAGE DEDICATION PLAT

All distances must be from the outer boundaries of the Section

Operator <b>TENNECO OIL COMPANY</b>			Lease <b>FLORANCE</b>		Well No. <b>67</b>
Unit Letter <b>0</b>	Section <b>19</b>	Township <b>27 North</b>	Range— <b>8 West</b>	County <b>San Juan</b>	
Actual Footage Location of Well: <b>1135</b> feet from the <b>South</b> line and <b>1850</b> feet from the <b>East</b> line					
Ground Level Elev. <b>6078' ungraded</b>	Producing Formation <b>Dakota</b>		Pool <b>Basin Dakota</b>	Dedicated Acreage: <b>E/2 320</b> Acres	

1. Outline the acreage dedicated to the subject well by colored pencil or hachure marks on the plat below.
2. If more than one lease is dedicated to the well, outline each and identify the ownership thereof (both as to working interest and royalty).
3. If more than one lease of different ownership is dedicated to the well, have the interests of all owners been consolidated by communitization, unitization, force-pooling, etc?  
( ) Yes ( ) No If answer is "yes," type of consolidation .....

If answer is "no," list the owners and tract descriptions which have actually consolidated. (Use reverse side of this form if necessary.) .....

No allowable will be assigned to the well until all interests have been consolidated (by communitization, unitization, forced-pooling, or otherwise) or until a non standard unit, eliminating such interests, has been approved by the Commission.

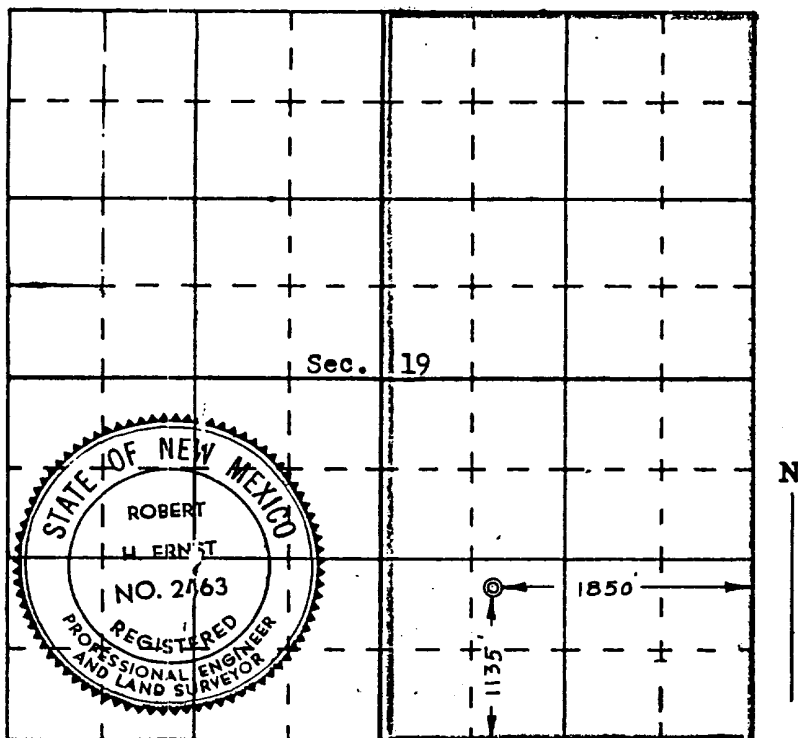
CERTIFICATION

I hereby certify that the information contained herein is true and complete to the best of my knowledge and belief.

*Harold C. Nichols*  
Name  
**Harold C. Nichols**  
Position  
**Senior Production Clerk**  
Company  
**Tenneco Oil Company**  
Date  
**August 25, 1966**

I hereby certify that the well location shown on this plat was plotted from field notes of actual surveys made by me or under my supervision, and that the same is true and correct to the best of my knowledge and belief.

**14 July 1966**  
Date Surveyed  
*Robert H. Ernst*  
Registered Professional Engineer  
and/or Land Surveyor  
**Robert H. Ernst**  
**N. Mex. PE & LS 2463**  
Certificate No.



ERNST ENGINEERING CO.  
DURANGO, COLORADO



District I  
PO Box 1980, Hobbs, NM 88241-1980  
District II  
PO Drawer D10, Artesia, NM 88211-0719  
District III  
1000 Rio Brazos Rd., Aztec, NM 87410  
District IV  
PO Box 2088, Santa Fe, NM 87504-2088

State of New Mexico  
Energy, Minerals & Natural Resources Department

OIL CONSERVATION DIVISION  
PO Box 2088  
Santa Fe, NM 87504-2088

Form C-102  
Revised February 21, 1994  
Instructions on back  
Submit to Appropriate District Office  
State Lease - 4 Copies  
Fee Lease - 3 Copies

☐ AMENDED REPORT

WELL LOCATION AND ACREAGE DEDICATION PLAT

1 API Number 30045 11822		2 Pool Code 82329		3 Pool Name Otero Chacra	
4 Property Code		5 Property Name FLORANCE			6 Well Number 67
7 OGRID No. 000778		8 Operator Name AMOCO PRODUCTION COMPANY			9 Elevation 6078

10 Surface Location

UL or lot no.	Section	Township	Range	Lot Idn	Feet from the	North/South line	Feet from the	East/West line	County
0	19	27 N	8W	0	1135	South	1850	East	San Juan

11 Bottom Hole Location If Different From Surface

UL or lot no.	Section	Township	Range	Lot Idn	Feet from the	North/South line	Feet from the	East/West line	County
12 Dedicated Acres 160		13 Joint or Infill		14 Consolidation Code		15 Order No.			

NO ALLOWABLE WELL BE ASSIGNED TO THIS COMPLETION UNTIL ALL INTERESTS HAVE BEEN CONSOLIDATED  
OR A NON-STANDARD UNIT HAS BEEN APPROVED BY THE DIVISION

16				17 OPERATOR CERTIFICATION I hereby certify that the information contained herein is true and complete to the best of my knowledge and belief	
				Signature Lois Raeburn	
				Printed Name Business Assistant	
				Title 2 / 08 / 95	
				Date	
				18 SURVEYOR CERTIFICATION I hereby certify that the well location shown on this plat was plotted from field notes of actual surveys made by me or under my supervision, and that the same is true and correct to the best of my belief.	
				14 July 1966	
				Date of Survey	
				Signature and Seal of Professional Surveyor:	
				ON FILE	
				2463	
				Certificate Number	

OFFSET WELL PRESSURES AND API GRAVITY INFORMATION  
Florance #67

WELLNAME	DAKOTA	PRESSURE (PSI)		API GRAVITY
		MESAVERDE	CHACRA	
FLORANCE 67	320	----	----	51.0
FLORANCE D LS 13	----	383	----	59.5
FLORANCE D LS 9	----	242	----	60.0
FLORANCE D LS 17	----	----	390	----
BOLACK C LS 14A	----	----	439	51.2

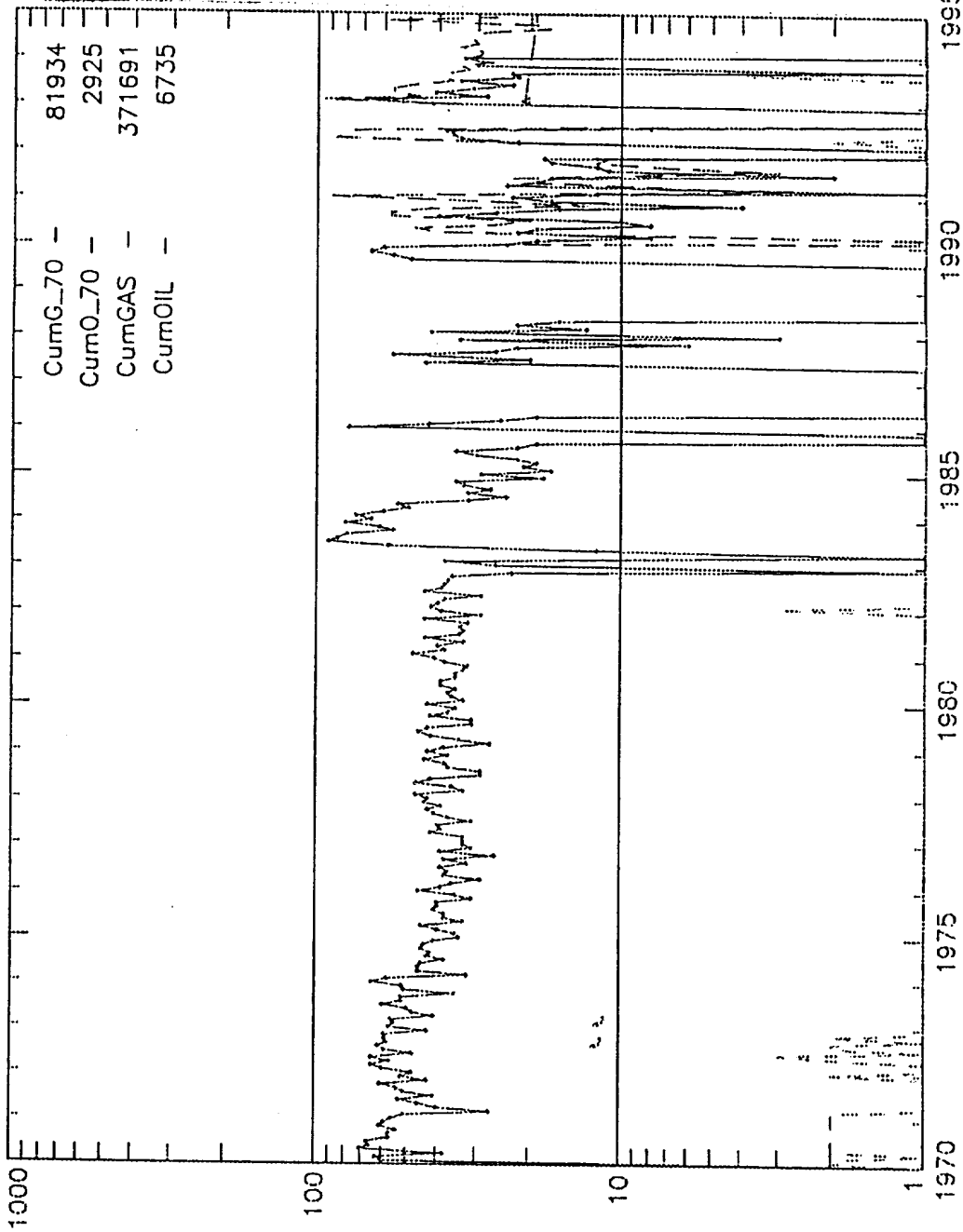
Engr: zrar06

FLORANCE 67

Operator-- AMOCO PRODUCTION CO

300451182200DK 0192708-067 DK

APC\_WI - 0.50000000



San Juan O.C.  
WELL: FLORANCE 067-DK (97900801)  
(Downtime excluded)

