

UNITED STATES
DEPARTMENT OF THE INTERIOR
GEOLOGICAL SURVEY

30-647-20057
045

APPLICATION FOR PERMIT TO DRILL, DEEPEN, OR PLUG BACK

1a. TYPE OF WORK
 DRILL DEEPEN PLUG BACK

b. TYPE OF WELL
 OIL WELL GAS WELL OTHER

2. NAME OF OPERATOR
 Tenneco Oil Company

3. ADDRESS OF OPERATOR
 P. O. Box 1714, Durango, Colorado

4. LOCATION OF WELL (Report location clearly and in accordance with any state requirements)
 At surface
 2250 FNL, 1020 FWL
 At proposed prod. zone Unit E

14. DISTANCE IN MILES AND DIRECTION FROM NEAREST TOWN OR POST OFFICE*

15. DISTANCE FROM PROPOSED* LOCATION TO NEAREST PROPERTY OR LEASE LINE, FT. (Also to nearest drig. unit line, if any)

16. NO. OF ACRES IN LEASE
 320

17. NO. OF ACRES ASSIGNED TO THIS WELL
 320

18. DISTANCE FROM PROPOSED LOCATION* TO NEAREST WELL, DRILLING, COMPLETED, OR APPLIED FOR, ON THIS LEASE, FT.

19. PROPOSED DEPTH
 7310

20. ROTARY OR CABLE TOOLS
 Rotary

21. ELEVATIONS (Show whether DF, RT, GR, etc.)
 6728 Gr.

22. APPROX. DATE WORK WILL START*
 April 24, 1967

5. LEASE DESIGNATION AND SERIAL NO.
 SF 079232

6. IF INDIAN, ALLOTTEE OR TRIBE NAME

7. UNIT AGREEMENT NAME

8. FARM OR LEASE NAME
 Bolack "B"

9. WELL NO.
 6

10. FIELD AND POOL, OR WILDCAT
 Basin Dakota

11. SEC., T., R., M., OR BLK. AND SURVEY OR AREA
 Sec. 33, T-27-N, R-8-W

12. COUNTY OR PARISH
 San Juan

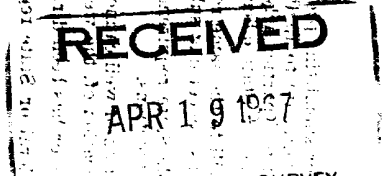
13. STATE
 New Mexico



PROPOSED CASING AND CEMENTING PROGRAM

SIZE OF HOLE	SIZE OF CASING	WEIGHT PER FOOT	SETTING DEPTH	QUANTITY OF CEMENT
15	10-3/4	32#	700	Cmt to surface
9-7/8	7-5/8	26.4#	2800	260 sx
6-3/4	4-1/2	105 & 11.6#	7310	100 sx 1st stage 150 sx 2nd stage

We plan to drill to T.D. 7310'. Run IES & GRD Logs. Run casing as shown above with stage collar set approximately 300' below bottom of the Mesaverde. WOC. Perf and frac and run 2-3/8" tubing. Conduct deliverability tests.



IN ABOVE SPACE DESCRIBE PROPOSED PROGRAM: If proposal is to deepen or plug back, give data on present productive zone and proposed new productive zone. If proposal is to drill or deepen directionally, give pertinent data on subsurface locations and measured and true vertical depths. Give blowout preventer program, if any.

24. SIGNED J. A. Ford TITLE Senior Production Clerk DATE April 18, 1967

(This space for Federal or State office use)

PERMIT NO. _____ APPROVAL DATE _____

APPROVED BY Ja TITLE _____ DATE _____

CONDITIONS OF APPROVAL, IF ANY:

5 USGS

*See Instructions On Reverse Side

1 Cont.
1 Southern Union
1 File

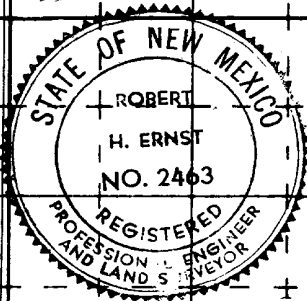
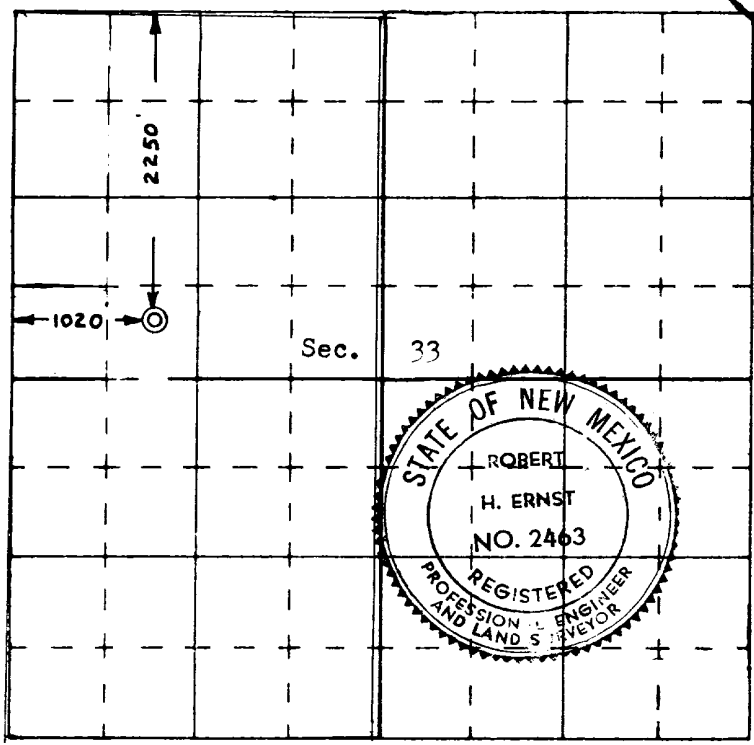
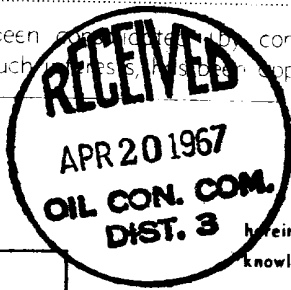
U.S. GEOLOGICAL SURVEY
 DISTRICT OFFICE
 ALBUQUERQUE, NEW MEXICO

**NEW MEXICO OIL CONSERVATION COMMISSION
WELL LOCATION AND ACERAGE DEDICATION PLAT**

All distances must be from the outer boundaries of the Section

Operator TENNECO OIL COMPANY		Lease BOLACK "B"		Well No. 6	
Unit Letter E	Section 33	Township 27 North	Range 8 West	County San Juan	
Actual Forage Location of Well 2250		feet from the North	line and 1020	feet from the West	line
Ground Level Elev. 6728' ungraded	Producing Formation Basin Dakota	Face Basin Dakota	Dedicated Acreage 320		W/2 Acres

- Outline the acreage dedicated to the subject well by colored pencil or hachure marks on the plat below.
- If more than one lease is dedicated to the well, outline each and identify the ownership thereof, both as to working interest and royalty.
- If more than one lease of different ownership is dedicated to the well, have the interests of all owners been consolidated by communitization, unitization, force-pooling, etc?
 - Yes No If answer is "yes," type of consolidation _____
 - If answer is "no," list the owners and tract descriptions which have actually consolidated. (Use reverse side of this form if necessary) _____
- No allowable will be assigned to the well until all interests have been consolidated by communitization, unitization, forced-pooling, or otherwise, or until a non standard unit, eliminating such interests, has been approved by the Commission.



CERTIFICATION

I hereby certify that the information contained herein is true and complete to the best of my knowledge and belief.

Name G. A. Ford
 Position Senior Production Clerk
 Company Tenneco Oil Company
 Date April 18, 1967

I hereby certify that the well location shown on this plat was plotted from field notes of actual surveys made by me or under my supervision, and that the same is true and correct to the best of my knowledge and belief.

Date Surveyed 11 April 1967

 Registered Professional Engineer and/or Land Surveyor

Robert H. Ernst
 N. Mex. PE & LS 2463
 Certificate No. _____

**ERNST ENGINEERING CO.
DURANGO, COLORADO**

