

UNITED STATES  
DEPARTMENT OF THE INTERIOR  
GEOLOGICAL SURVEY

30-045-20688

5. LEASE DESIGNATION AND SERIAL NO.

SF-077374

6. IF INDIAN, ALLOTTEE OR TRIBE NAME

7. UNIT AGREEMENT NAME

8. FARM OR LEASE NAME

Hanks

9. WELL NO.

#12-7

10. FIELD AND POOL, OR WILDCAT

Basin Dakota

11. SEC., T., R., M., OR LK.  
AND SURVEY OR AREA

Section 7-27N-9W

12. COUNTY OR PARISH 13. STATE

San Juan New Mexico

12. TYPE OF WORK

DRILL ☒DEEPEN ☐PLUG BACK ☐

13. TYPE OF WELL

OIL ☐GAS ☒

OTHER

SINGLE ☒MULTIPLE ☐

ZONE

ZONE

14. NAME OF OPERATOR

Astec Oil &amp; Gas Company

15. ADDRESS OF OPERATOR

Boxer 570, Farmington, New Mexico

16. LOCATION OF WELL (Report location clearly and in accordance with any State requirements.)\*

At surface

2350 FNL &amp; 930 FEL, Section 7-27N-9W

At proposed prod. zone

17. DISTANCE IN MILES AND DIRECTION FROM NEAREST TOWN OR POST OFFICE\*

18. DISTANCE FROM PROPOSED\*

LOCATION TO NEAREST  
PROPERTY OR LEASE LINE, FT.  
(Also to nearest orig. unit line, if any)

19. NO. OF ACRES IN LEASE

320

20. NO. OF ACRES ASSIGNED  
TO THIS WELL

320 Acres

21. DISTANCE FROM PROPOSED LOCATION\*  
TO NEAREST WELL, DRILLING, COMPLETED,  
OR APPLIED FOR, ON THIS LEASE, FT.

19. PROPOSED DEPTH

7050

20. ROTARY OR CABLE TOOLS

Rotary

22. ELEVATIONS (Show whether DF, RT, GR, etc.)

6521 Gr

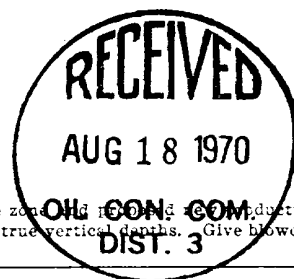
23. APPROX. DATE WORK WILL START\*

## 23. PROPOSED CASING AND CEMENTING PROGRAM

SIZE OF HOLE	SIZE OF CASING	WEIGHT PER FOOT	SETTING DEPTH	QUANTITY OF CEMENT
12 1/4"	8-5/8"	24#	300'	200 Sms
8-3/4"	4-1/2"	10.5#	7050'	1st Stage 400 Sms - 2nd Stage 300 Sms

## PROPOSE TO:

1. Drill 12 1/4" Hole To 300', Set 300' Of 8-5/8" 24# Casing W/200 Sms.
2. Drill 8-3/4" Hole To Approximately TD Of 7050'. Set 4 1/2" 10.5# Casing & Cement In 2 Stages. Set DV Tool @ 2600' & Cement 1st Stage W/400 Sms 2nd Stage 300 Sms Of Cement.
3. Perf, Frac, & Complete In The Dakota Formation.



IN ABOVE SPACE DESCRIBE PROPOSED PROGRAM: If proposal is to deepen or plug back, give data on present productive zone and record of production. If proposal is to drill or deepen directionally, give pertinent data on subsurface locations and measured and true vertical depths. Give blowout preventer program, if any.

24.

TITLE District Superintendent

DATE August 14, 1970

(This space for Federal or State office use)

PERMIT NO.

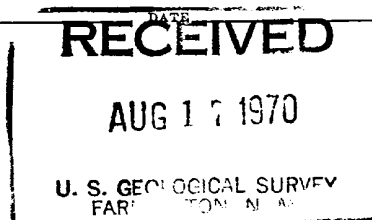
APPROVAL DATE

APPROVED BY

TITLE

CONDITIONS OF APPROVAL, IF ANY:

\*See Instructions On Reverse Side



**NEW MEXICO OIL CONSERVATION COMMISSION  
WELL LOCATION AND ACREAGE DEDICATION PLAT**

Form C-102  
Supersedes C-128  
Effective 1-1-65

All distances must be from the outer boundaries of the Section.

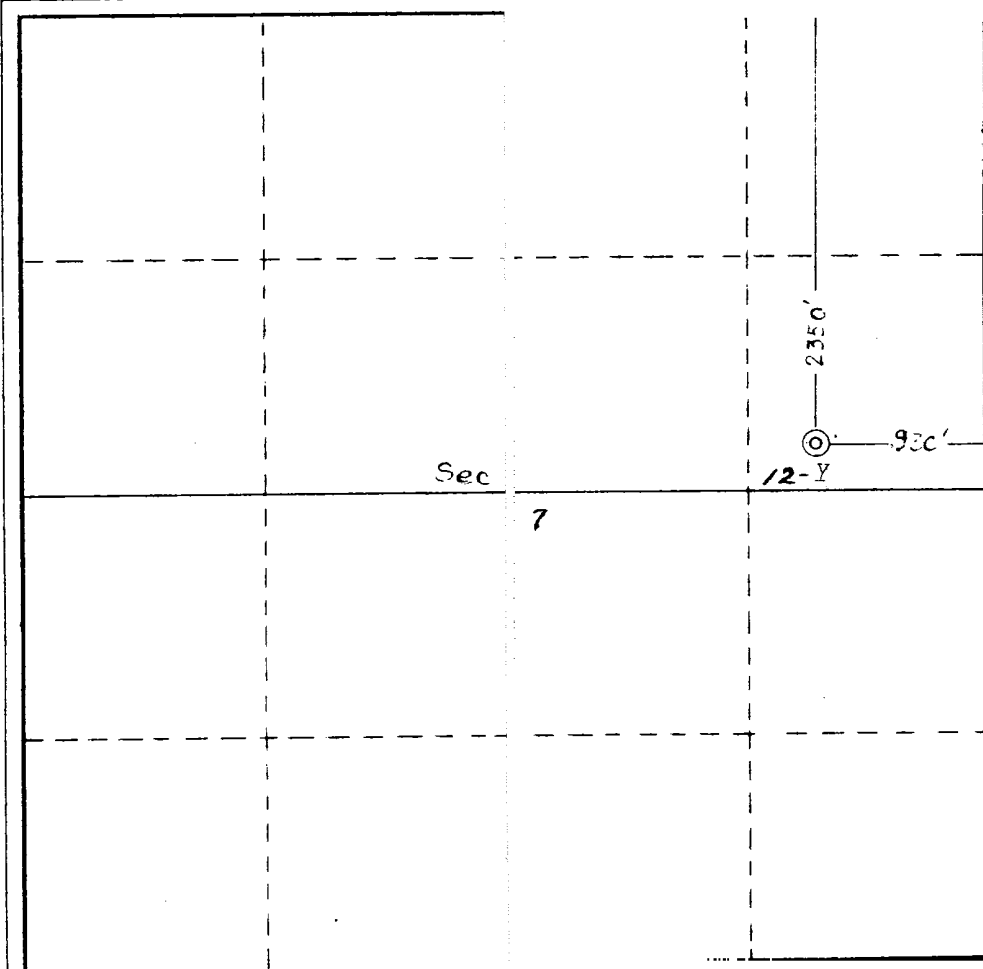
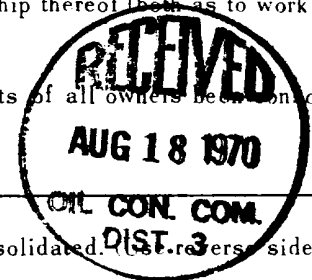
Operator <b>Aztec Oil &amp; Gas Company</b>			Lease <b>Hanks</b>		Well No. <b>12-Y</b>
Unit Letter <b>H</b>	Section <b>7</b>	Township <b>27N-</b>	Range <b>9W</b>	County <b>San Juan</b>	
Actual Footage Location of Well: <b>2350</b> feet from the <b>North</b> line and <b>930</b> feet from the <b>East</b> line					
Ground Level Elev. <b>6521</b>	Producing Formation <b>Dakota</b>	Pool <b>Basin Dakota</b>	Dedicated Acreage: <input checked="" type="checkbox"/> <b>320</b> Acres		

- Outline the acreage dedicated to the subject well by colored pencil or hachure marks on the plat below.
- If more than one lease is dedicated to the well, outline each and identify the ownership thereof (both as to working interest and royalty).
- If more than one lease of different ownership is dedicated to the well, have the interests of all owners been consolidated by communitization, unitization, force-pooling, etc?

☐ Yes ☐ No If answer is "yes," type of consolidation \_\_\_\_\_

If answer is "no," list the owners and tract descriptions which have actually been consolidated (by communitization, unitization, forced-pooling, or otherwise) or until a non-standard unit, eliminating such interests, has been approved by the Commission. \_\_\_\_\_

No allowable will be assigned to the well until all interests have been consolidated (by communitization, unitization, forced-pooling, or otherwise) or until a non-standard unit, eliminating such interests, has been approved by the Commission.



**CERTIFICATION**

I hereby certify that the information contained herein is true and complete to the best of my knowledge and belief.

**ORIGINAL SIGNED BY JOE C. SALMON**

Name  
*Joe C. Salmon*

Position  
*District Superintendent*

Company  
*Aztec Oil & Gas Company*

Date  
*August 12, 1970*

I hereby certify that the well location shown on this plat was plotted from field notes of actual surveys made by me or under my supervision, and that the same is true and correct to the best of my knowledge and belief.

Date Surveyed  
*August 12, 1970*

Surveyed by  
*Paul B. Kiser Jr.*

Certifying No.  
*3970*