

UNITED STATES  
DEPARTMENT OF THE INTERIOR  
GEOLOGICAL SURVEY

30-045-21186

5. LEASE DESIGNATION AND SERIAL NO.

NM 16476

6. IF INDIAN, ALLOTTEE OR TRIBE NAME

7. UNIT AGREEMENT NAME

8. FARM OR LEASE NAME

Bengal C

9. WELL NO.

1

10. FIELD AND POOL, OR WILDCAT

Wildcat

11. SEC., T., R., M., OR BLK.  
AND SURVEY OR AREA

Sec. 36, T27N, R13W

12. COUNTY OR PARISH 13. STATE

San Juan

N.M.

## 1a. TYPE OF WORK

DRILL ☒DEEPEN ☐PLUG BACK ☐

## b. TYPE OF WELL

OIL  
WELL ☐GAS  
WELL ☒

OTHER

SINGLE  
ZONE ☐MULTIPLE  
ZONE ☐

## 2. NAME OF OPERATOR

Jerome P. McHugh

## 3. ADDRESS OF OPERATOR

P. O. Box 234, Farmington, New Mexico 87401

## 4. LOCATION OF WELL (Report location clearly and in accordance with any State requirements.)\*

At surface

1850' FNL, 1850' FWL

At proposed prod. zone

## 14. DISTANCE IN MILES AND DIRECTION FROM NEAREST TOWN OR POST OFFICE\*

12 miles south Farmington, New Mexico

## 15. DISTANCE FROM PROPOSED\*

LOCATION TO NEAREST  
PROPERTY OR LEASE LINE, FT.  
(Also to nearest drlg. unit line, if any)

790'

## 16. NO. OF ACRES IN LEASE

640

17. NO. OF ACRES ASSIGNED  
TO THIS WELL

160

18. DISTANCE FROM PROPOSED LOCATION\*  
TO NEAREST WELL, DRILLING COMPLETED,  
OR APPLIED FOR, ON THIS LEASE, FT.

## 19. PROPOSED DEPTH

1250'

## 20. ROTARY OR CABLE TOOLS

Rotary

## 21. ELEVATIONS (Show whether DF, RT, GR, etc.)

5963' GR

## 22. APPROX. DATE WORK WILL START\*

12-30-72

## 23.

## PROPOSED CASING AND CEMENTING PROGRAM

SIZE OF HOLE	SIZE OF CASING	WEIGHT PER FOOT	SETTING DEPTH	QUANTITY OF CEMENT
9 7/8	7 5/8	24	60	20 sacks
6 3/4	5	11	1210	150 sacks

Propose to test Pictured Cliffs formation by setting casing on top of Pictured Cliffs. Drill open hole with gas below casing and complete well natural. Run 1 1/4" tubing.



DEC 2 1972

IN ABOVE SPACE DESCRIBE PROPOSED PROGRAM: If proposal is to deepen or plug back, give data on present productive zone and proposed new productive zone. If proposal is to drill or deepen directionally, give pertinent data on subsurface locations and measured and true vertical depths. Give blowout preventer program, if any.

## 24.

Original signed by T. A. Dugan

SIGNED

TITLE

Engineer

DATE

12-28-72

(This space for Federal or State office use)

PERMIT NO.

APPROVAL DATE

APPROVED BY

TITLE

DATE

CONDITIONS OF APPROVAL, IF ANY:

**NEW MEXICO OIL CONSERVATION COMMISSION  
WELL LOCATION AND ACERAGE DEDICATION PLAT**

All distances must be from the outer boundaries of the Section

Operator <b>Jerome P. McHugh</b>			Lease <b>Bengal C</b>		Well No. <b>DEC 2 1972</b>
Unit Letter <b>F</b>	Section <b>36</b>	Township <b>27 North</b>	Range <b>13 West</b>	County <b>San Juan</b>	
Actual Footage Location of Well: <b>1850</b> feet from the <b>North</b> line and <b>1850</b> feet from the <b>West</b> line					
Ground Level Elev. <b>5963</b>	Producing Formation <b>Pictured Cliffs</b>	Pool <b>Wildcat</b>	Dedicated Acreage: <b>160</b> Acres		

1. Outline the acreage dedicated to the subject well by colored pencil or hachure marks on the plat below.
2. If more than one lease is dedicated to the well, outline each and identify the ownership thereof (both as to working interest and royalty),
3. If more than one lease of different ownership is dedicated to the well, have the interests of all owners been consolidated by communitization, unitization, force-pooling, etc?

( ) Yes ( ) No If answer is "yes," type of consolidation .....

If answer is "no," list the owners and tract descriptions which have actually consolidated. (Use reverse side of this form if necessary.) .....

No allowable will be assigned to the well until all interests have been consolidated (by communitization, unitization, forced-pooling, or otherwise) or until a non standard unit, eliminating such interests, has been approved by the Commission.

**CERTIFICATION**

I hereby certify that the information contained herein is true and complete to the best of my knowledge and belief.

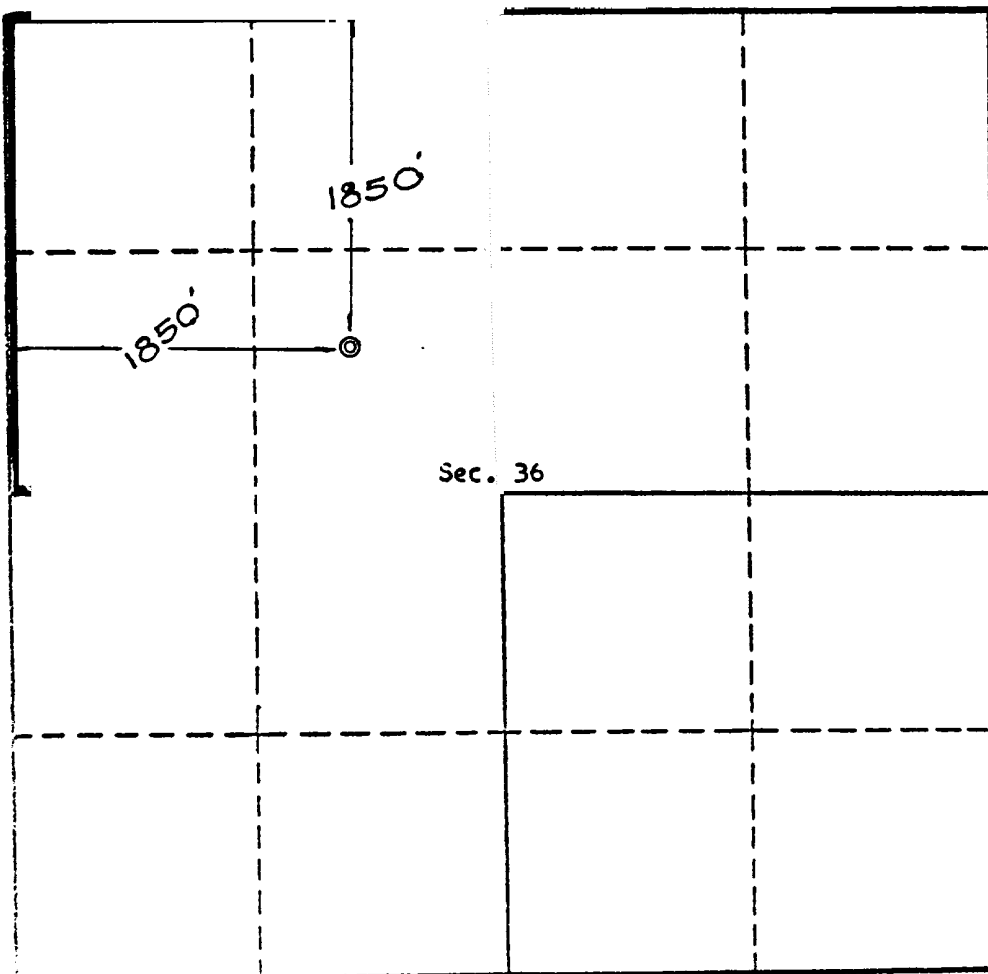
Original signed by T. A. Dugan

Name  
Thomas A. Dugan  
Position  
Engineer  
Company  
Jerome P. McHugh  
Date  
12-28-1972

I hereby certify that the well location shown on this plat was plotted from field notes of actual surveys made by me or under my supervision, and that the same is true and correct to the best of my knowledge and belief.

Date Surveyed  
December 24, 1972  
Registered Professional Engineer  
and/or Land Surveyor

*E. V. Echolaw*  
Certificate No. 3602  
E. V. Echolaw LS



Scale, 1 inch = 1,000 feet