

UNITED STATES  
DEPARTMENT OF THE INTERIOR  
GEOLOGICAL SURVEY

30-045-21714

5. LEASE DESIGNATION AND SERIAL NO.

N00-C-14-20-2977

6. IF INDIAN, ALLOTTEE OR TRIBE NAME

Navajo

7. UNIT AGREEMENT NAME

8. FARM OR LEASE NAME

Barbara Kay

9. WELL NO.

2

10. FIELD AND POOL, OR WILDCAT

Wildcat

11. SEC., T., R., M., OR BLM.  
AND SURVEY OR AREA

Sec 21, T27N, R19W N4PM

12. COUNTY OR PARISH 13. STATE

San Juan

New Mexico

1a. TYPE OF WORK

DRILL ☒DEEPEN ☐PLUG BACK ☐

b. TYPE OF WELL

OIL  
WELL ☒GAS  
WELL ☐

OTHER

Wildcat

SINGLE  
ZONE ☐MULTIPLE  
ZONE ☐

2. NAME OF OPERATOR

Northwest Pipeline Corporation

3. ADDRESS OF OPERATOR

P.O. Box 90 Farmington, New Mexico 87401

4. LOCATION OF WELL (Report location clearly and in accordance with any State requirements.)  
At surface

990' FNL &amp; 2170' FEL

At proposed prod zone

14. DISTANCE IN MILES AND DIRECTION FROM NEAREST TOWN OR POST OFFICE\*

15. DISTANCE FROM PROPOSED\*  
LOCATION TO NEAREST  
PROPERTY OR LEASE LINE, FT.  
(Also to nearest drill unit line, if any)

16. NO. OF ACRES IN LEASE

2560

17. NO. OF ACRES ASSIGNED  
TO THIS WELL

40

18. DISTANCE FROM PROPOSED LOCATION\*  
TO NEAREST WELL DRILLING, COMPLETED,  
OR APPLIED FOR, ON THIS LEASE, FT.

19. PROPOSED DEPTH

20. ROTARY OR CABLE TOOLS

Rotary

21. ELEVATIONS (Show whether DF, RT, GR, etc.)

5662' CR

22. APPROX. DATE WORK WILL START\*

March 1, 1975

23. PROPOSED CASING AND CEMENTING PROGRAM

| SIZE OF HOLE | SIZE OF CASING | WEIGHT PER FOOT | SETTING DEPTH | QUANTITY OF CEMENT |
|--------------|----------------|-----------------|---------------|--------------------|
| 17-1/4       | 13-3/8         | 48              | 120           | 150 sx             |
| 12-1/4       | 8-5/8          | 24              | 2230          | 650 sx             |
| 7-7/8        | 5-1/2          | 15.5 & 17.0     | 7100          | 300 sx             |

It is proposed to drill this well to 7100' with mud. All significant shows will be drill stem tested. It is anticipated that at least one (1) core will be cut.

If the drill stem tests, core analysis and logs warrant, casing will be run and cemented. The zones of interest will be selectively perforated and stimulated.

A BOP of sufficient pressure rating will be installed after the surface casing is run and cemented. All subsequent work will be conducted through the BOP.

The NW/4, NE/4 Section 21, T27N, R19W is dedicated to this well.

IN ABOVE SPACE DESCRIBE PROPOSED PROGRAM: If proposal is to deepen or plug back, give data on present productive zone and proposed new productive zone. If proposal is to drill or deepen directionally, give pertinent data on subsurface locations and measured and true vertical depths. Give blowout preventer program, if any.

24.

SIGNED

*O. B. Whitenburg*  
O. B. Whitenburg

TITLE Production &amp; Drilling Engineer DATE 2-21-75

(This space for Federal or State office use)

PERMIT NO.

APPROVAL DATE

APPROVED BY

*EW*

TITLE

CONDITIONS OF APPROVAL, IF ANY:

RECEIVED

FEB 26 1975

DATE

U. S. GEOLOGICAL SURVEY  
FARMINGTON, N.M.

NEW MEXICO OIL CONSERVATION COMMISSION  
WELL LOCATION AND ACREAGE DEDICATION PLAT

Form O-101  
Supersedes O-120  
Effective 10-1-65

All distances must be from the outer boundaries of the Section.

|                                |       |          |             |                         |            |
|--------------------------------|-------|----------|-------------|-------------------------|------------|
| NORTHWEST PIPELINE CORPORATION |       |          | Barbara Kay |                         | Well No. 2 |
| Section                        | Range | Township | Block       | County                  |            |
| B                              | 21    | 27 NORTH | 19 WEST     | SAN JUAN                |            |
| Acres of Section               |       |          |             |                         |            |
| 990                            |       | NORTH    |             | 2170 feet from the EAST |            |
| 5662.0                         |       | Elbert   |             | Wildcat 40              |            |

- Outline the acreage dedicated to the subject well by colored pencil or hatchure marks on the plat below.
- If more than one lease is dedicated to the well, outline each and identify the ownership thereof (both as to working interest and royalty).
- If more than one lease of different ownership is dedicated to the well, have the interests of all owners been consolidated by communitization, unitization, force-pooling, etc?

☐ Yes ☒ No If answer is "yes," type of consolidation \_\_\_\_\_

If answer is "no," list the owners and tract descriptions which have actually been consolidated. (Use reverse side of this form if necessary.) NW/4, NE/4, Sec 21, T27N, R19W

No allowable will be assigned to the well until all interests have been consolidated (by communitization, unitization, force-pooling or otherwise) or until a non-standard unit, eliminating such interests, has been approved by the Commission.

|         |  |  |  |                         |  |
|---------|--|--|--|-------------------------|--|
|         |  |  |  | <p>N00-C-14-20-2977</p> |  |
|         |  |  |  |                         |  |
| Sec. 21 |  |  |  |                         |  |
|         |  |  |  |                         |  |
|         |  |  |  |                         |  |
|         |  |  |  |                         |  |

CERTIFICATION

I hereby certify that the information contained herein is true and complete to the best of my knowledge and belief.

*O.B. Whitenburg*  
O.B. Whitenburg js

Position  
Production & Drilling Eng.

Company  
Northwest Pipeline Corp.

Date  
February 21, 1975

I hereby certify that the well location shown on this plat was plotted from field notes of actual surveys made by me or under my supervision, and that the same is true and correct to the best of my knowledge and belief.

Date  
20 February 1975  
*James P. Jones*  
JAMES P. JONES

Northwest Pipeline Corporation



5113-7-75

PRODUCTION & DRILLING  
P. O. BOX 90  
FARMINGTON, NEW MEXICO 87401

February 21, 1975

United States Geological Survey  
P.O. 959  
Farmington, New Mexico 87401

RE: Application for Permit to Drill  
Barbara Kay #2  
NW/4 NE/4 Section 21, T27N, R19W  
San Juan County, New Mexico

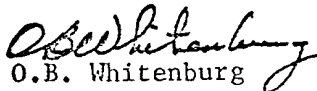
Gentlemen:

Information regarding existing roads, pipelines, flowlines, etc., relative to the above well location are included on the enclosed attachments.

Water for drilling and completion operations will be obtained from the Big Gap Reservoir. Permission has been obtained from the Navajo Tribe to use this water. Waste disposal will be burned in the burn pit, latrine or reserve pit. There will be no airstrip associated with drilling this well. Upon completion of this well the location will be cleaned, leveled and a dry hole marker placed if applicable.

Yours very truly,

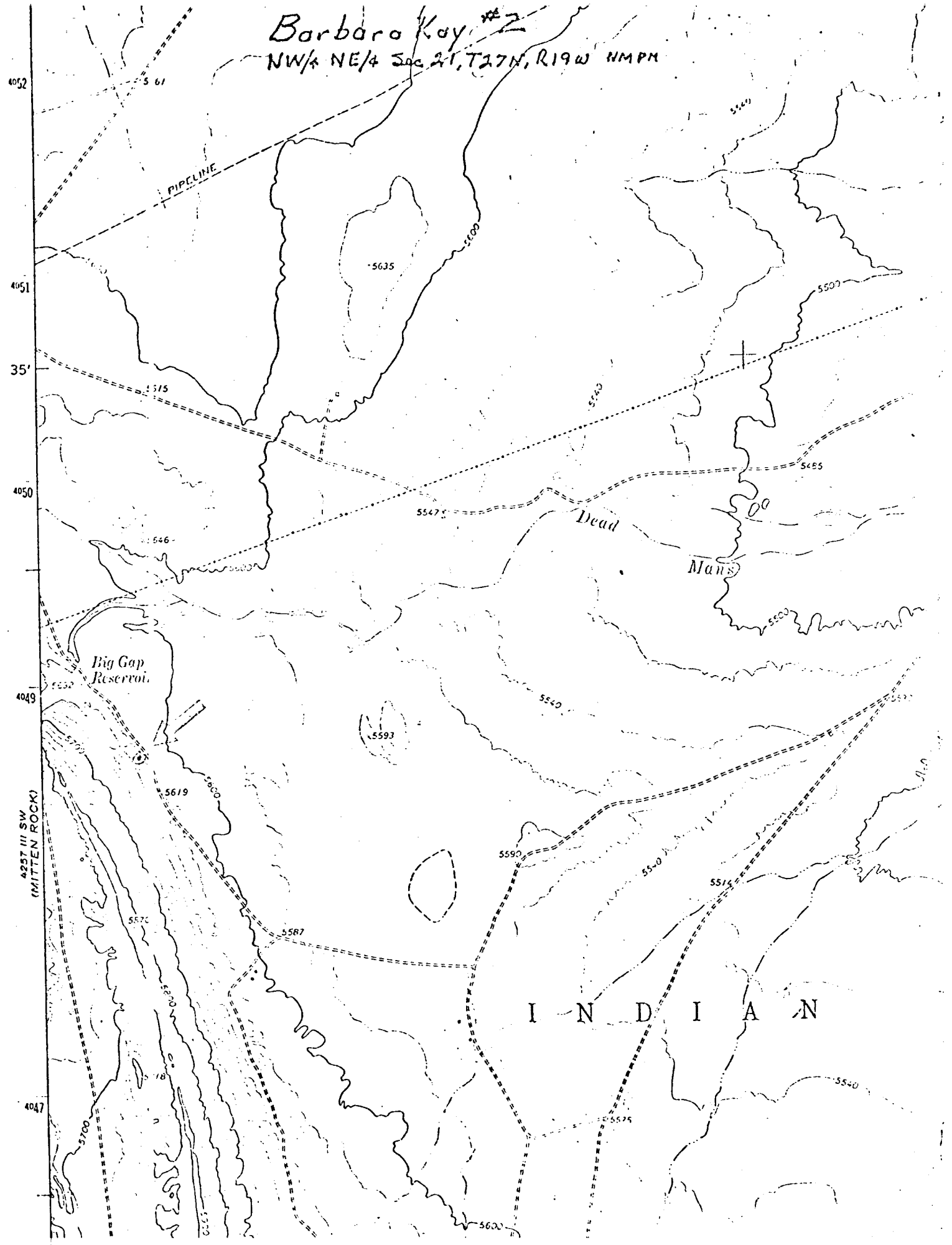
Northwest Pipeline Corporation

  
O.B. Whitenburg  
Production & Drilling Engineer

OBW/js  
CC: Well File  
C. File

Barbara Key #2

NW 1/4 NE 1/4 Sec 21, T27N, R19W NMPN



INDIAN

LOCATION AND EQUIPMENT LAYOUT

Barbora Kay #2

