

SUBMIT IN TRIPLICATE\*  
(Other instructions on  
reverse side)Form approved.  
Budget Bureau No. 42-R1425.UNITED STATES  
DEPARTMENT OF THE INTERIOR  
GEOLOGICAL SURVEY

30-045-21897

## APPLICATION FOR PERMIT TO DRILL, DEEPEN, OR PLUG BACK

## 1a. TYPE OF WORK

DRILL ☒DEEPEN ☐PLUG BACK ☐

## b. TYPE OF WELL

OIL  
WELL ☐GAS  
WELL ☒

OTHER

SINGLE  
ZONE ☐MULTIPLE  
ZONE ☐

## 2. NAME OF OPERATOR

Dugan Production Corp.

## 3. ADDRESS OF OPERATOR

Box 234, Farmington, NM 87401

## 4. LOCATION OF WELL (Report location clearly and in accordance with any State or Federal law.)

At surface

973' FNL - 1000' FWL

At proposed prod. zone

## 14. DISTANCE IN MILES AND DIRECTION FROM NEAREST TOWN OR POST OFFICE

14 miles south Farmington, NM

## 15. DISTANCE FROM PROPOSED\*

LOCATION TO NEAREST  
PROPERTY OR LEASE LINE, FT.  
(Also to nearest drlg. unit line, if any)

1000'

## 16. NO. OF ACRES IN LEASE

1424.64

18. DISTANCE FROM PROPOSED LOCATION\*  
TO NEAREST WELL, DRILLING, COMPLETED,  
OR APPLIED FOR, ON THIS LEASE, FT.

3200'

## 19. PROPOSED DEPTH

1400'

17. NO. OF ACRES ASSIGNED  
TO THIS WELL

160

## 20. ROTARY OR CABLE TOOLS

Rotary

## 21. ELEVATIONS (Show whether DF, RT, GR, etc.)

6085' GR

## 22. APPROX. DATE WORK WILL START\*

11-20-75

## 23.

## PROPOSED CASING AND CEMENTING PROGRAM

SIZE OF HOLE	SIZE OF CASING	WEIGHT PER FOOT	SETTING DEPTH	QUANTITY OF CEMENT
6-1/4"	5-1/2"	14#	30'	5 sx
4-3/4"	2-7/8"	6.4#	1400'	75 sx

Plan to drill 4-3/4" hole with air or minimum mud to 1400' to test Pictured Cliffs formation.

Do not plan to have blowout preventer on well while drilling. Master valve and stripper head will be installed while completing.

RECEIVED

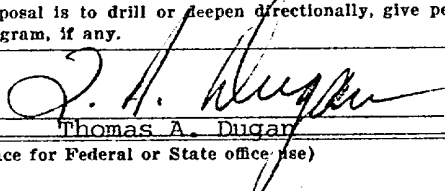
OCT 6 1975

U. S. GEOLOGICAL SURVEY

IN ABOVE SPACE DESCRIBE PROPOSED PROGRAM: If proposal is to deepen or plug back, give data on present productive zone and proposed new productive zone. If proposal is to drill or deepen directionally, give pertinent data on subsurface locations and measured and true vertical depths. Give blowout preventer program, if any.

## 24.

SIGNED



TITLE

Engineer

DATE

10-3-75

(This space for Federal or State office use)

PERMIT NO.

APPROVAL DATE

APPROVED BY

TITLE

DATE

CONDITIONS OF APPROVAL, IF ANY:



\*See Instructions On Reverse Side

**NEW MEXICO OIL CONSERVATION COMMISSION  
WELL LOCATION AND ACREAGE DEDICATION PLAT**

Form C-102  
Supersedes C-128  
Effective 1-1-65

All distances must be from the outer boundaries of the Section.

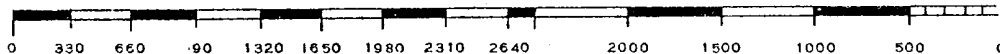
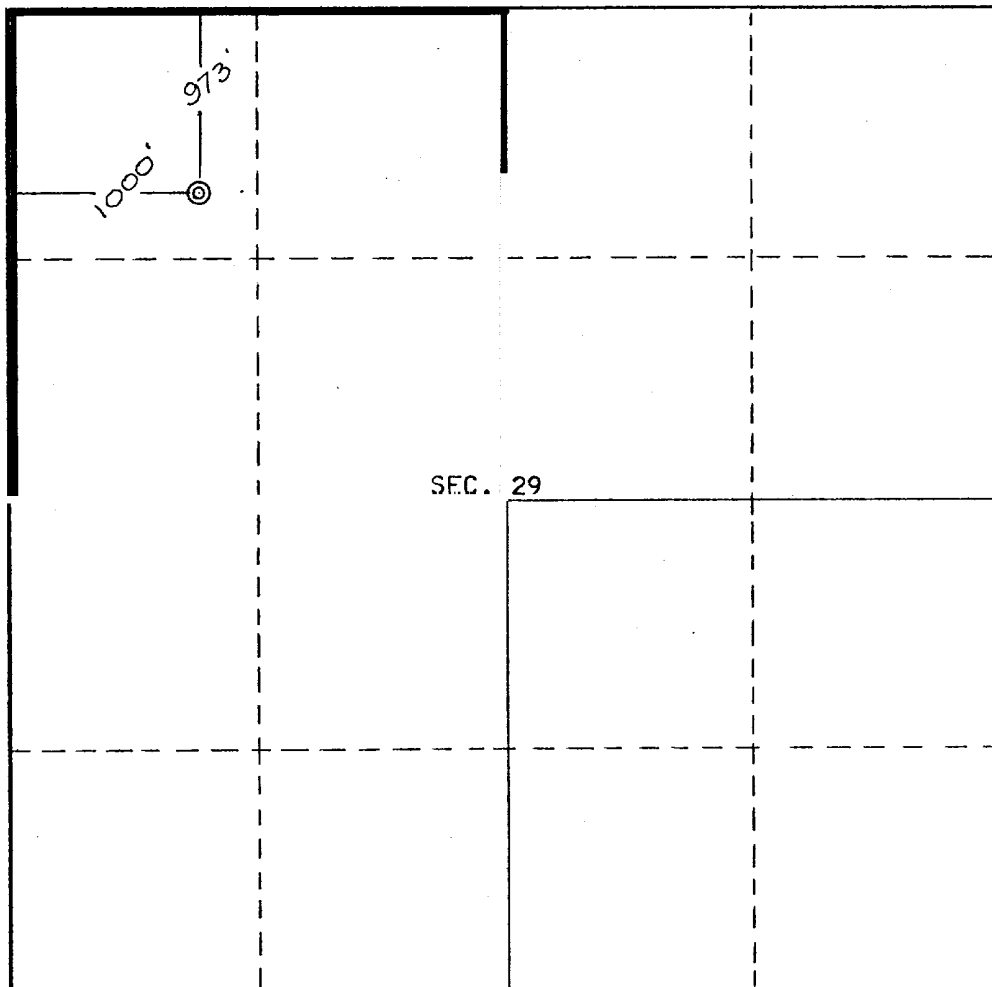
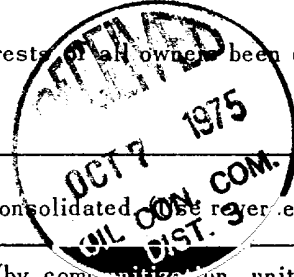
Operator <b>Dugan Production Corporation</b>			Lease <b>KR</b>		Well No. <b>2</b>
Unit Letter <b>D</b>	Section <b>29</b>	Township <b>27 North</b>	Range <b>13 West</b>	County <b>San Juan</b>	
Actual Footage Location of Well: <b>973</b> feet from the <b>North</b> line and <b>1000</b> feet from the <b>West</b> line					
Ground Level Elev. <b>6085</b>	Producing Formation <b>Pictured Cliffs</b>	Pool <b>WAW</b>	Dedicated Acreage: <b>160</b> Acres		

1. Outline the acreage dedicated to the subject well by colored pencil or hachure marks on the plat below.
2. If more than one lease is dedicated to the well, outline each and identify the ownership thereof (both as to working interest and royalty).
3. If more than one lease of different ownership is dedicated to the well, have the interests of all owners been consolidated by communitization, unitization, force-pooling, etc?

☐ Yes ☐ No If answer is "yes," type of consolidation \_\_\_\_\_

If answer is "no," list the owners and tract descriptions which have actually been consolidated (on the reverse side of this form if necessary.) \_\_\_\_\_

No allowable will be assigned to the well until all interests have been consolidated (by communitization, unitization, forced-pooling, or otherwise) or until a non-standard unit, eliminating such interests, has been approved by the Commission.



**CERTIFICATION**

I hereby certify that the information contained herein is true and complete to the best of my knowledge and belief.

*Thomas A. Dugan*  
Name  
**Thomas A. Dugan**  
Position  
**Engineer**

Company  
**Dugan Production Corp.**

Date  
**10-3-75**

I hereby certify that the well location shown on this plat was plotted from field notes of actual surveys made by me or under my supervision, and that the same is true and correct to the best of my knowledge and belief.

Date Surveyed  
**August 6, 1975**

Registered Professional Engineer and/or Land Surveyor

*E.V. Echohawk*

Certificate No. **3602**  
**E.V. Echohawk LS**