

NO. OF COPIES RECEIVED	6
DISTRIBUTION	
SANTA FE	1
FILE	1
U.S.G.S.	2
LAND OFFICE	1
OPERATOR	1

NEW MEXICO OIL CONSERVATION COMMISSION

30-445-22581
Form C-101
Revised 1-1-65

5A. Indicate Type of Lease	
STATE <input checked="" type="checkbox"/>	FEE <input type="checkbox"/>
5. State Oil & Gas Lease No.	
V-89	

APPLICATION FOR PERMIT TO DRILL, DEEPEN, OR PLUG BACK

1a. Type of Work		7. Unit Agreement Name	
b. Type of Well OIL WELL <input type="checkbox"/> GAS WELL <input checked="" type="checkbox"/> OTHER <input type="checkbox"/>		8. Farm or Lease Name Dietrich State	
2. Name of Operator Resources Investment Corporation		9. Well No. 1	
3. Address of Operator Suite 2080, First of Denver Plaza, 633 17th St., Denver, CO 80202		10. Field and Pool, or Wildcat Basin Dakota ✓	
4. Location of Well UNIT LETTER <u>K</u> LOCATED <u>2470</u> FEET FROM THE <u>south</u> LINE <u>1580</u> FEET FROM THE <u>west</u> LINE OF SEC. <u>16</u> TWP. <u>27N</u> RGE. <u>12W</u> NMPM		12. County San Juan	
19. Proposed Depth 6100		19A. Formation Dakota	
20. Rotary or C.T. Rotary		21. Elevations (Show whether DF, RT, etc.)	
21A. Kind & Status Plug. Bond		21B. Drilling Contractor Coleman Drilling	
22. Approx. Date Work will start August 1, 1977			

PROPOSED CASING AND CEMENT PROGRAM

SIZE OF HOLE	SIZE OF CASING	WEIGHT PER FOOT	SETTING DEPTH	SACKS OF CEMENT	EST. TOP SURFACE
12 1/4	8 5/8	20#	200	150	
7 7/8	4 1/2	10.5	6100	600	1500

Move in - rig up rotary tools, Drill 12 1/4" hole to 200 feet; run 200 feet 8 5/8" casing and cement as above. Install blow out preventer and test. Drill 7 7/8" hole to 6100 feet. Run open hole logs to evaluate Dakota formation. If commercial production is indicated, 4 1/2" casing will be run and cemented as above. If the well is non-commercial it will be plugged according to the Oil Conservation Commission specifications. No abnormal pressures or temperatures are anticipated. Mud will be a low-solids non-dispersed system with the following characteristics: wt. 8.7-8.9, viscosity 36-40 seconds, FL 8-10 cc.

Gas under this lease is not dedicated to an existing contract.

FOR STATE USE ONLY
DRILLING COMMENCED

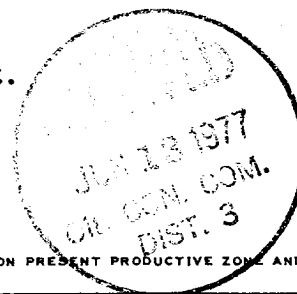
EXPIRES 9-11-77

IN ABOVE SPACE DESCRIBE PROPOSED PROGRAM: IF PROPOSAL IS TO DEEPEN OR PLUG BACK, GIVE DATA ON PRESENT PRODUCTIVE ZONE AND PROPOSED NEW PRODUCTIVE ZONE. GIVE BLOWOUT PREVENTER PROGRAM, IF ANY.

I hereby certify that the information above is true and complete to the best of my knowledge and belief.

Signed Jack D. Cook Title Agent Date 6-10-77
(This space for State Use)

APPROVED BY W. Kendrick TITLE SUPERVISOR DATE 6-10-77
CONDITIONS OF APPROVAL, IF ANY:



**NEW MEXICO OIL CONSERVATION COMMISSION
WELL LOCATION AND ACREAGE DEDICATION PLAT**

Form C-102
Supersedes C-128
Effective 1-1-65

All distances must be from the outer boundaries of the Section.

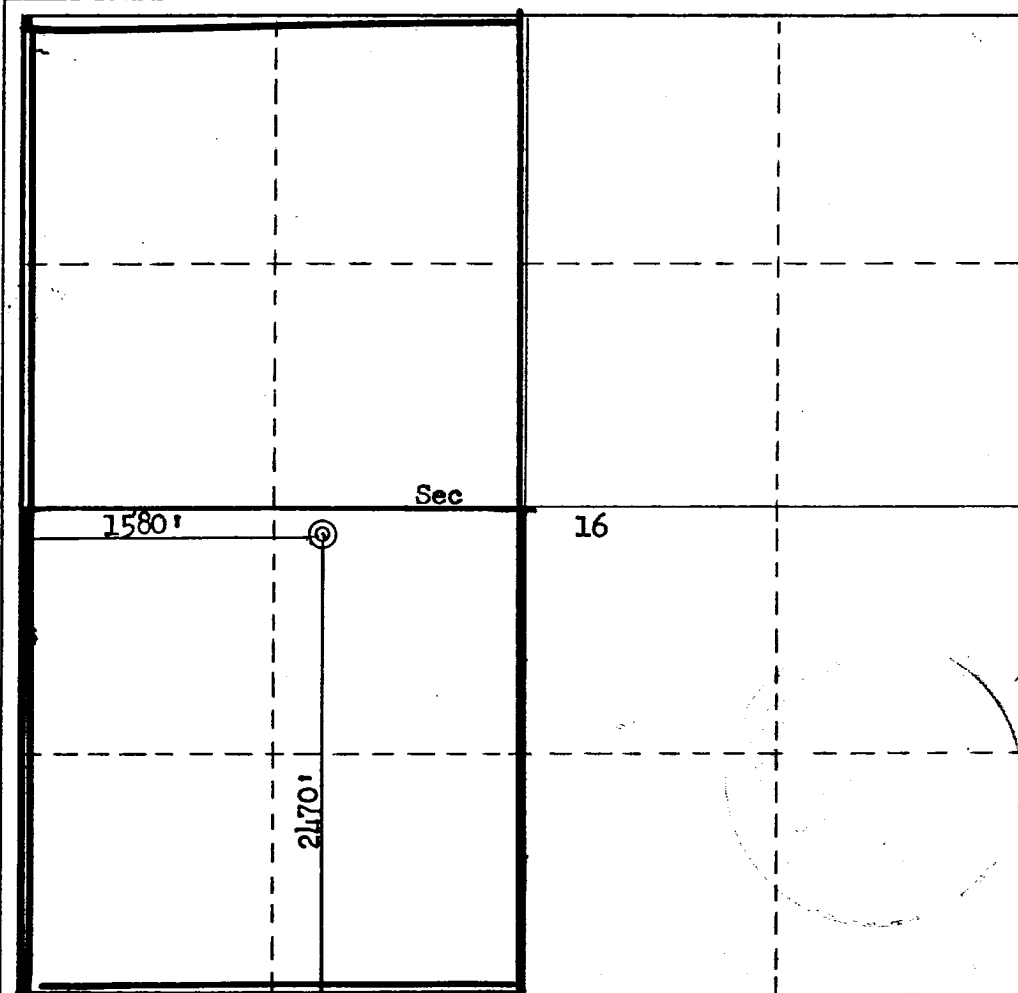
Operator Resources Investment Corporation			Lease Dietrich State		Well No. 1
Unit Letter K	Section 16	Township 27N	Range 12W	County San Juan	
Actual Footage Location of Well: 2470 feet from the South line and 1580 feet from the West line					
Ground Level Elev. 5784	Producing Formation Dakota	Pool Basin Dakota		Dedicated Acreage: 320 Acres	

1. Outline the acreage dedicated to the subject well by colored pencil or hachure marks on the plat below.
2. If more than one lease is dedicated to the well, outline each and identify the ownership thereof (both as to working interest and royalty).
3. If more than one lease of different ownership is dedicated to the well, have the interests of all owners been consolidated by communitization, unitization, force-pooling, etc?

☐ Yes ☐ No If answer is "yes," type of consolidation _____

If answer is "no," list the owners and tract descriptions which have actually been consolidated. (Use reverse side of this form if necessary.) _____

No allowable will be assigned to the well until all interests have been consolidated (by communitization, unitization, forced-pooling, or otherwise) or until a non-standard unit, eliminating such interests, has been approved by the Commission.



CERTIFICATION

I hereby certify that the information contained herein is true and complete to the best of my knowledge and belief.

Name _____

Jack D. Cook

Position

Agent

Company

Resources Investment Corp.

Date

June 10, 1977

I hereby certify that the well location shown on this plat was plotted from field notes of actual surveys made by me or under my supervision, and that the same is true and correct to the best of my knowledge and belief.

Date Surveyed

June 3, 1977

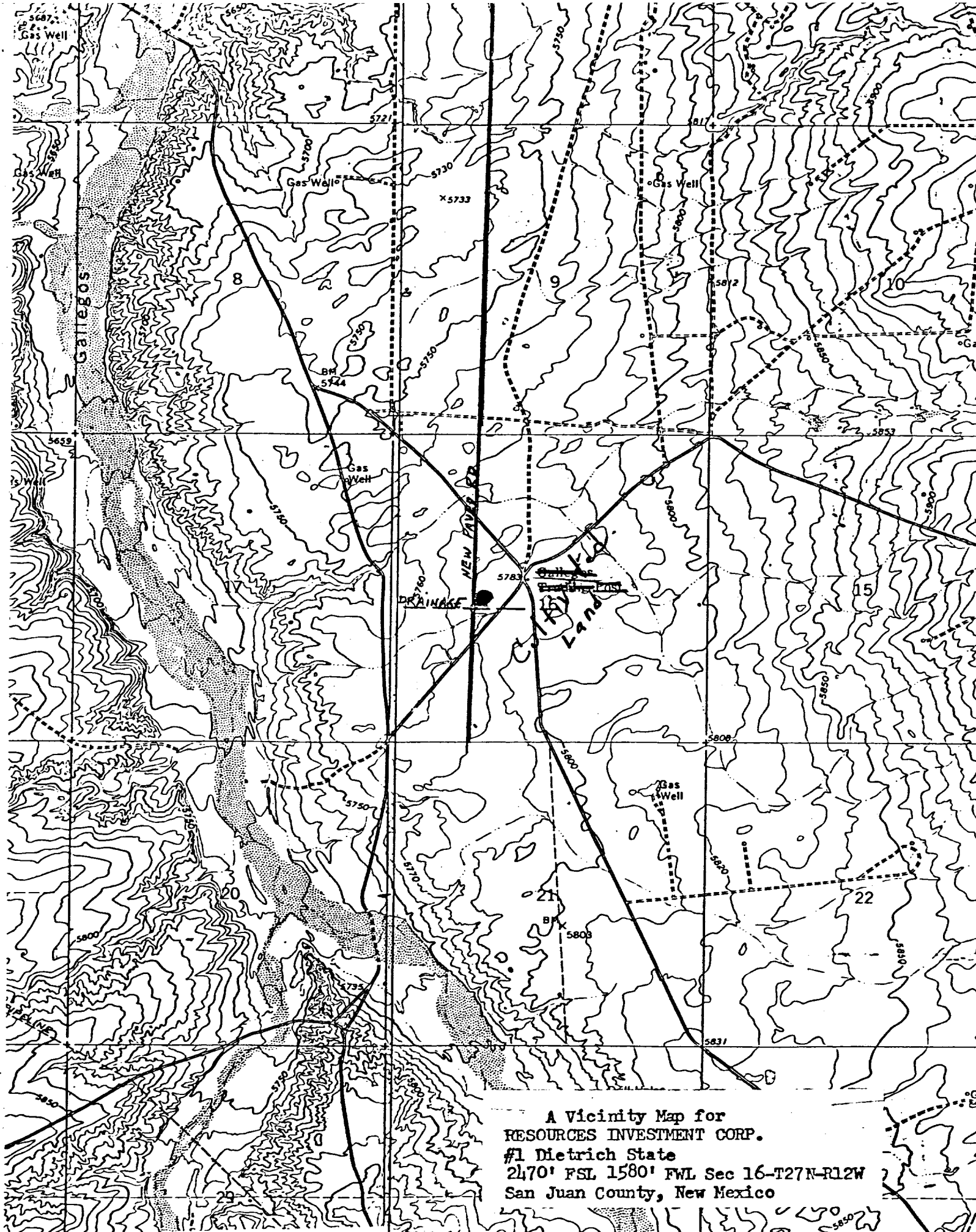
Registered Professional Engineer and/or Land Surveyor

Fred B. Kerr, Jr.

Certificate No.

3950

0 330 660 990 1320 1650 1980 2310 2640 2000 1500 1000 500 0



A Vicinity Map for
RESOURCES INVESTMENT CORP.
#1 Dietrich State
2470' FSL 1580' FWL Sec 16-T27N-R12W
San Juan County, New Mexico