

UNITED STATES
DEPARTMENT OF THE INTERIOR
GEOLOGICAL SURVEY

APPLICATION FOR PERMIT TO DRILL, DEEPEN, OR PLUG BACK

1a. TYPE OF WORK

DRILL ☒DEEPEN ☐PLUG BACK ☐

b. TYPE OF WELL

OIL
WELL ☐GAS
WELL ☒

OTHER

SINGLE
ZONE ☒MULTIPLE
ZONE ☐

2. NAME OF OPERATOR

El Paso Natural Gas Company

3. ADDRESS OF OPERATOR

Box 289, Farmington, New Mexico 87401

4. LOCATION OF WELL (Report location clearly and in accordance with any State requirements.)*

At surface

1835'S, 850'W

At proposed prod. zone

14. DISTANCE IN MILES AND DIRECTION FROM NEAREST TOWN OR POST OFFICE*

10 miles South of Bloomfield, New Mexico

15. DISTANCE FROM PROPOSED*

LOCATION TO NEAREST

PROPERTY OR LEASE LINE, FT.

(Also to nearest drig. unit line, if any)

805'

18. DISTANCE FROM PROPOSED LOCATION*

TO NEAREST WELL, DRILLING, COMPLETED,

OR APPLIED FOR, ON THIS LEASE, FT.

700'

16. NO. OF ACRES IN LEASE

1283.46

19. PROPOSED DEPTH

7100

17. NO. OF ACRES ASSIGNED

TO THIS WELL

W/ 321.61

20. ROTARY OR CABLE TOOLS

Roatry

21. ELEVATIONS (Show whether DF, RT, GR, etc.)

6498' G.L.

22. APPROX. DATE WORK WILL START*

23.

PROPOSED CASING AND CEMENTING PROGRAM

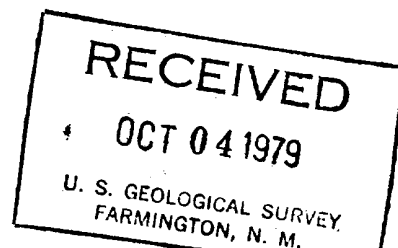
SIZE OF HOLE	SIZE OF CASING	WEIGHT PER FOOT	SETTING DEPTH	QUANTITY OF CEMENT
12 1/4"	8 5/8"	24#	200'	165 cu. ft. 100% excess to circ.
7 7/8"	4 1/2"	10.5 & 11.6#	7100'	1st 424 cf. 50% excess to cover Gallup.
				2nd. 525 cf. 60% excess to cover Mesa Verde.
				3rd. 494 cf. 60% excess to cover Ojo Alamo.

Selectively perforate and sandwater fracture the Dakota formation.

A 3000 psi WP and 6000psi test double gate preventor equipped with blind and pipe rams will be used for blow out prevention on this well.

This gas is dedicated.

The W/2 of section 19 is dedicated to this well.



IN ABOVE SPACE DESCRIBE PROPOSED PROGRAM: If proposal is to deepen or plug back, give data on present productive zone and proposed new productive zone. If proposal is to drill or deepen directionally, give pertinent data on subsurface locations and measured and true vertical depths. Give blowout preventer program, if any.

24.

SIGNED

D. G. Luics

TITLE

Drilling Clerk

DATE

10-2-79

(This space for Federal or State office use)

PERMIT NO.

APPROVAL DATE

APPROVED BY

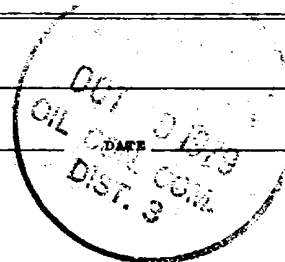
TITLE

CONDITIONS OF APPROVAL, IF ANY:

ok [signature]

*See Instructions On Reverse Side

NMOC



All distances must be from the outer boundaries of the Section.

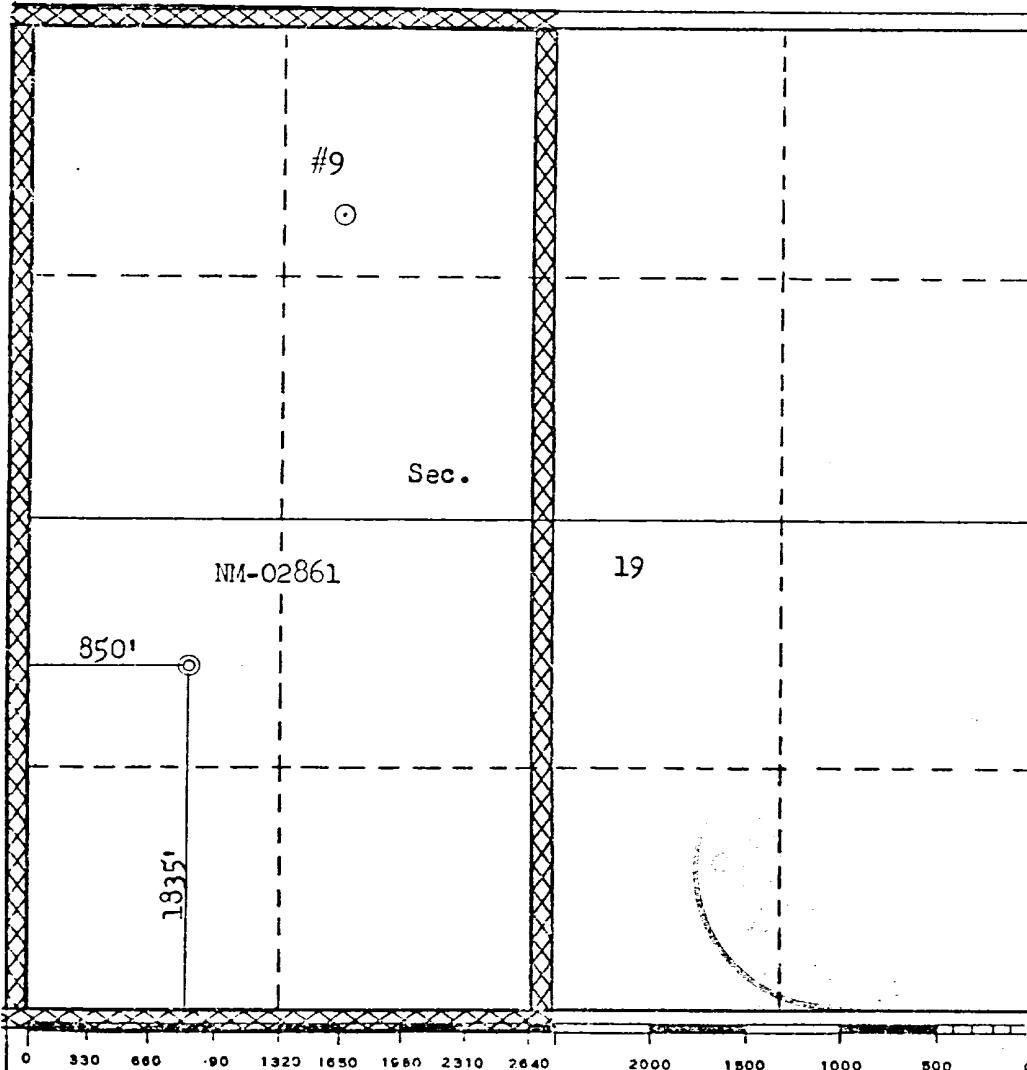
Operator EL PASO NATURAL GAS COMPANY			Lease LODEWICK (NM-02861)		Well No. 9-E
Unit Letter L	Section 19	Township 27N	Range 9W	County San Juan	
Actual Footage Location of Well: 1835 feet from the South line and 850 feet from the West line					
Ground Level Elev. 6498	Producing Formation Dakota		Pool Basin Dakota		Dedicated Acreage: 321.61 Acres

1. Outline the acreage dedicated to the subject well by colored pencil or hachure marks on the plat below.
2. If more than one lease is dedicated to the well, outline each and identify the ownership thereof (both as to working interest and royalty).
3. If more than one lease of different ownership is dedicated to the well, have the interests of all owners been consolidated by communitization, unitization, force-pooling, etc?

☐ Yes ☐ No If answer is "yes," type of consolidation _____

If answer is "no," list the owners and tract descriptions which have actually been consolidated. (Use reverse side of this form if necessary.) _____

No allowable will be assigned to the well until all interests have been consolidated (by communitization, unitization, forced-pooling, or otherwise) or until a non-standard unit, eliminating such interests, has been approved by the Commission.



Multi-Point Surface Use Plan

Lodewick #9 E

1. Existing Road - Please refer to Map No. 1 which shows the existing roads. New roads which will be required have been marked on this map. All existing and new roads will be properly maintained during the duration of this project.
2. Planned Access Roads - Please refer to Map No. 1. The grade of the access roads will be consistent with that of the local terrain. The road surface will not exceed twenty feet (20') in width. Upon completion of the project, the access road will be adequately drained to control soil erosion. Drainage facilities may include ditches, water bars, culverts or any other measure deemed necessary by trained Company personnel to insure proper drainage. Gates and/or cattleguards will be installed if necessary.
3. Location of Existing Wells - Please refer to Map No. 2.
4. Location of Tank Batteries, Production Facilities, and Production Gathering and Service Lines - Please refer to Maps No. 1 and No. 2. Map No. 2 shows the existing gas gathering lines. Map No. 1 shows the existing roads and new proposed access roads. All known production facilities are shown on these two maps.
5. Location and Type of Water Supply - Water for the proposed project will be obtained from Huerfano Water Well #1
6. Source of Construction Materials - No additional materials will be required to build either the access road or the proposed location.
7. Methods of Handling Waste Materials - All garbage and trash materials will be put into a burn pit shown on the attached Location Plat No. 1. When clean-up operations are begun on the proposed project, the burn pit with its refuse will be buried to a depth of at least three feet (3'). A latrine, the location of which is also shown on Plat No. 1,

7. cont'd. . will be provided for human waste. If large amounts of liquids are left in the reserve pit after completion of the project, the pit will be fenced until the liquids have had adequate time to dry. The location clean-up will not take place until such time as the reserve pit can be properly covered over to prevent run-off from carrying any of these materials into the watershed. No earthen pit will be located on natural drainages; all earthen pits will be so constructed as to prevent leakage from occurring.
8. Ancillary Facilities - No camps or airstrips will be associated with this project.
9. Wellsite Layout - Please refer to the attached Plat No. 1.
10. Plans for Restoration of the Surface - After completion of the proposed project, the location will be cleaned and leveled. The location will be left in such a condition that will enable reseeding operations to be carried out. Seed mixture as designated by the responsible government agency will be used. The reseeding operation will be performed during the time period set forth by the regulatory body. The location production equipment will be painted as designated by the responsible government agency.
11. Other Information - The terrain is rolling hills with sagebrush, pinon and juniper trees growing. Deer, cattle and horses are occasionally seen on the proposed project site.
12. Operator's Representative - W.D. Dawson, PO Box 990, Farmington, NM
13. Certification - I hereby certify that I, or persons under my direct supervision, have inspected the proposed drillsite and access route; that I am familiar with the conditions which presently exist; that the statements made in this plan are, to the best of my knowledge, true and correct; and that the work associated with the operations proposed herein will be performed by El Paso Natural Gas Company and its contractors and sub-contractors in conformity with this plan and the terms and conditions under which it is approved.

L. A. Aimes

L. A. Aimes
Project Drilling Engineer

October 2, 1979

OPERATIONS PLAN

LODEWICK #9E

I. Location: 1835'S, 850'W, Section 19, T-27-N, R-9-W, San Juan County, New Mexico

Field: Basin Dakota

Elevation 6498' GL

II. Geology:

A. Formation Tops:	Surface	Nacimiento	Menefee	3990'
	Ojo Alamo	1315'	Point Lookout	4720'
	Kirtland	1580'	Gallup	5860'
	Fruitland	2130'	Greenhorn	6670'
	Pic. Cliffs	2370'	Graneros	6725'
	Lewis	2470'	Dakota	6845'
	Mesa Verde	3880'	Total Depth	7100'

B. Logging Program: Induction Electric and Gamma Ray Density at TD.

C. Coring: none

D. Samples: none

III. Drilling:

A. Mud Program: mud from surface to Total Depth.

IV. Materials:

A. Casing Program:	<u>Hole Size</u>	<u>Depth</u>	<u>Casing Size</u>	<u>Wt. & Grade</u>
	12 1/4"	200'	8 5/8"	24.0# K-55
	7 7/8"	7100'	4 1/2"	10.5# J-55

B. Float Equipment: 8 5/8" surface casing - Cement guide shoe.

4 1/2" production casing-Cement guide shoe and self-fill insert valve. Two multiple stage cementers equipped for three stage cementing. Set tool for second stage at 5320' and tool for third stage at 2670'. Run 20 Howco centralizers spaced as follows: one on each of the bottom 8 joints, one below each stage tool, and five above each stage tool spaced every other joint.

C. Tubing: 7100' of 2 3/8", 4.7#, J-55 tubing with a common pump seating nipple and an expendable check valve with drill type guide.

D. Wellhead Equipment: 8" 2000 X 8 5/8" casing head with 8" X 4 1/2" casing hanger, 8" 2000 x 6" 2000 xmas tree. Wellhead representative to set all slips.

V. Cementing:

Surface casing (12 1/4" x 8 5/8") - use 140 sks. of Class "B" cement with 1/4# gel-flake per sack and 3% calcium chloride (165 cu. ft. of slurry, 100% excess to circulate). WOC 12 hours. Test to 600#/30 minutes.

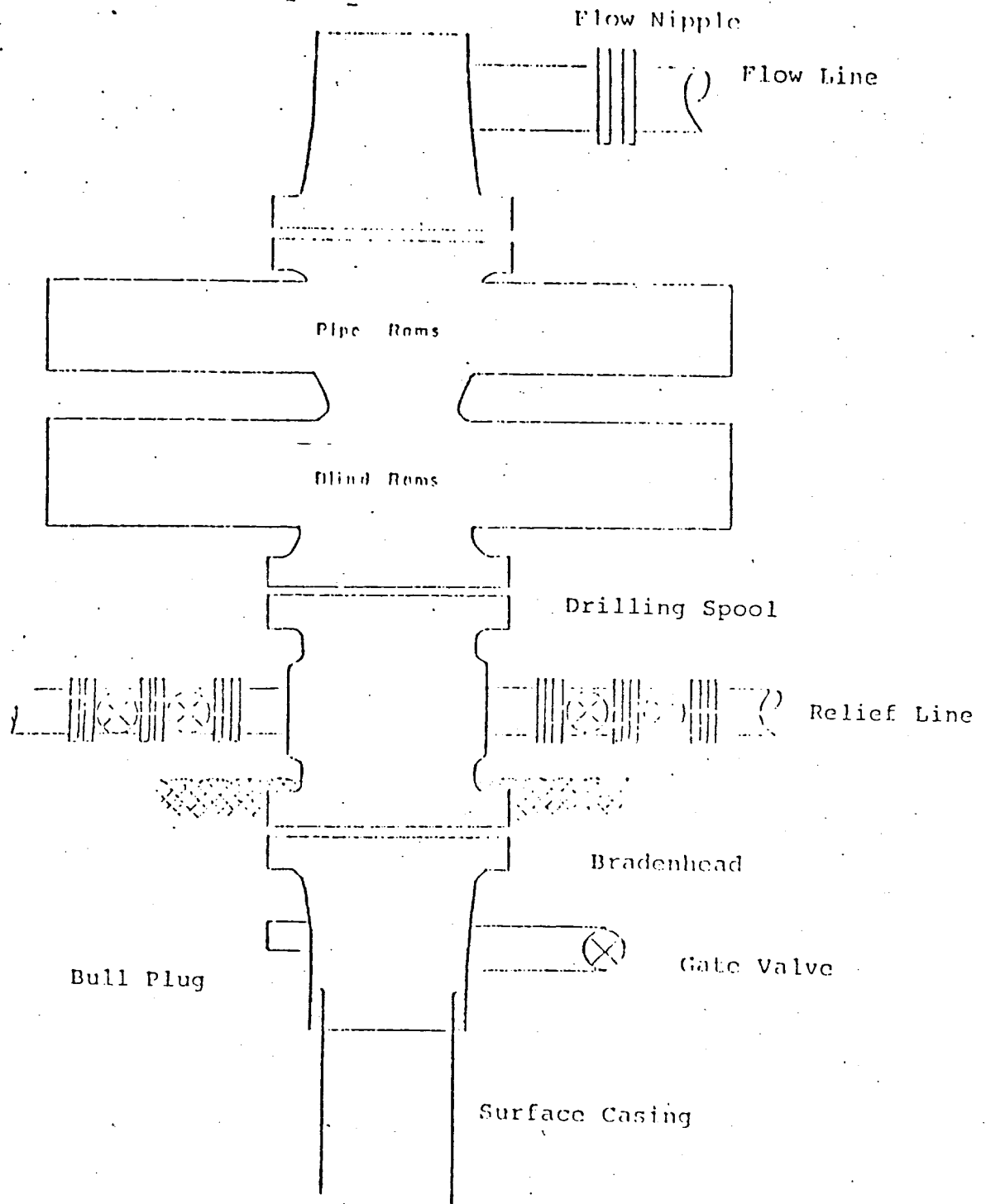
Production casing-

First stage (4 1/2" x 7 7/8") - use 200 sks. of 65/35 Class "B" Pozmix with 6% gel and 2% calcium chloride mixed with 8.3 gallons water per sack followed by 80 sks. 50/50 Class "B" Pozmix with 2% gel, 2% calcium chloride and 1/4# fine tuf-plug per cu. ft. 424 cu. ft. of slurry, 50% excess to cover the Gallup).

Second stage (4 1/2" x 7 7/8") - circulate mud for 2 hours, then cement with 324 sks. of 65/35 Class "B" Pozmix with 6% gel and 2% calcium chloride and 8.3 gallons of water per sack (525 cu. ft. of slurry, 60% excess to cover the Mesa Verde).

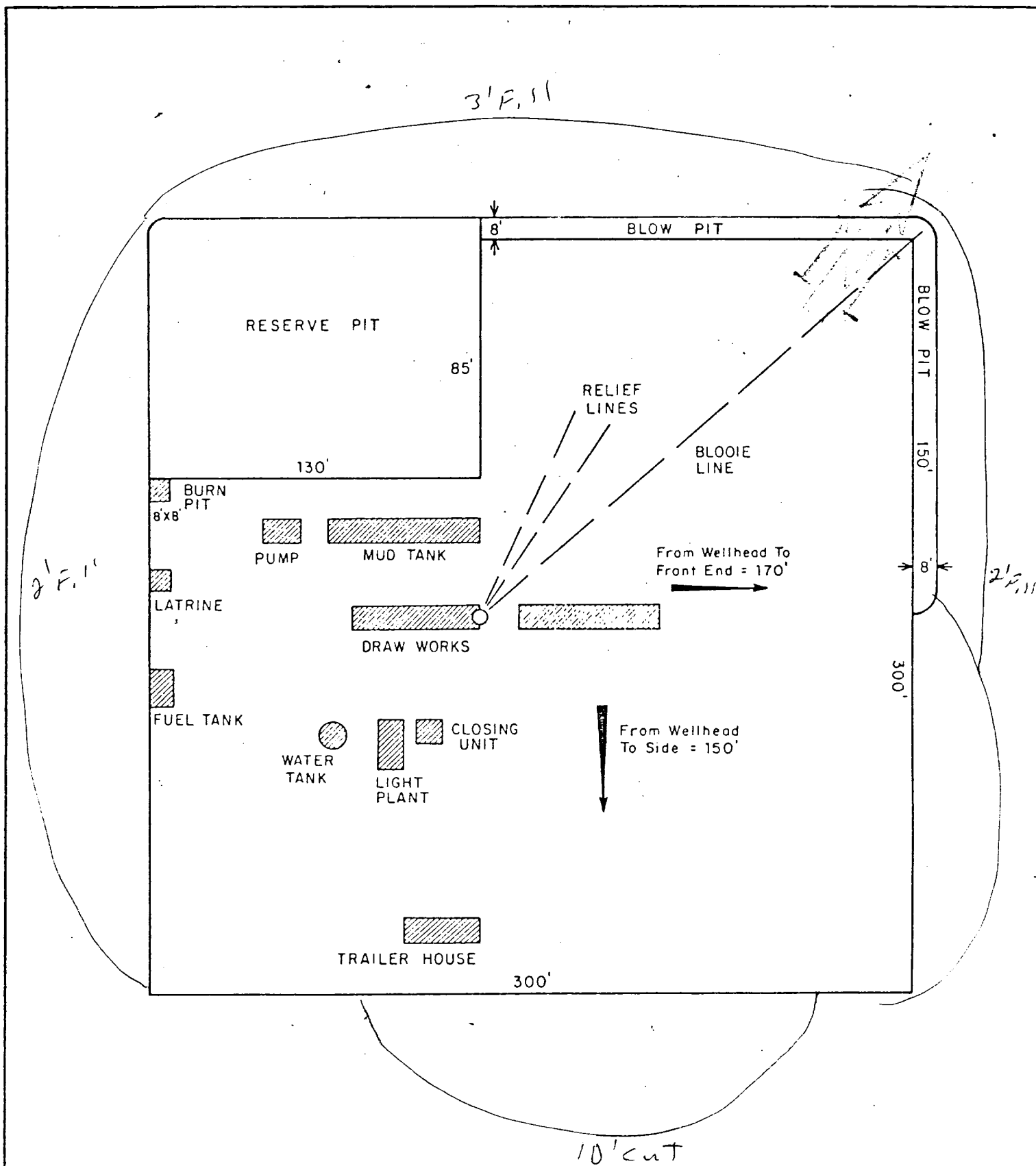
Third stage (4 1/2" x 7 7/8") - circulate mud for 2 hours, then cement using 305 sks. 65/35 Class "B" Pozmix with 6% gel and 2% calcium chloride mixed with 8.3 gallons water per sack 494 cu. ft. of slurry, 60% excess to cover the Ojo Alamo). Run temperature survey on top stage only at 8 hours. WOC 18 hours.

Typical B.O.P. Installation
for Dakota Well



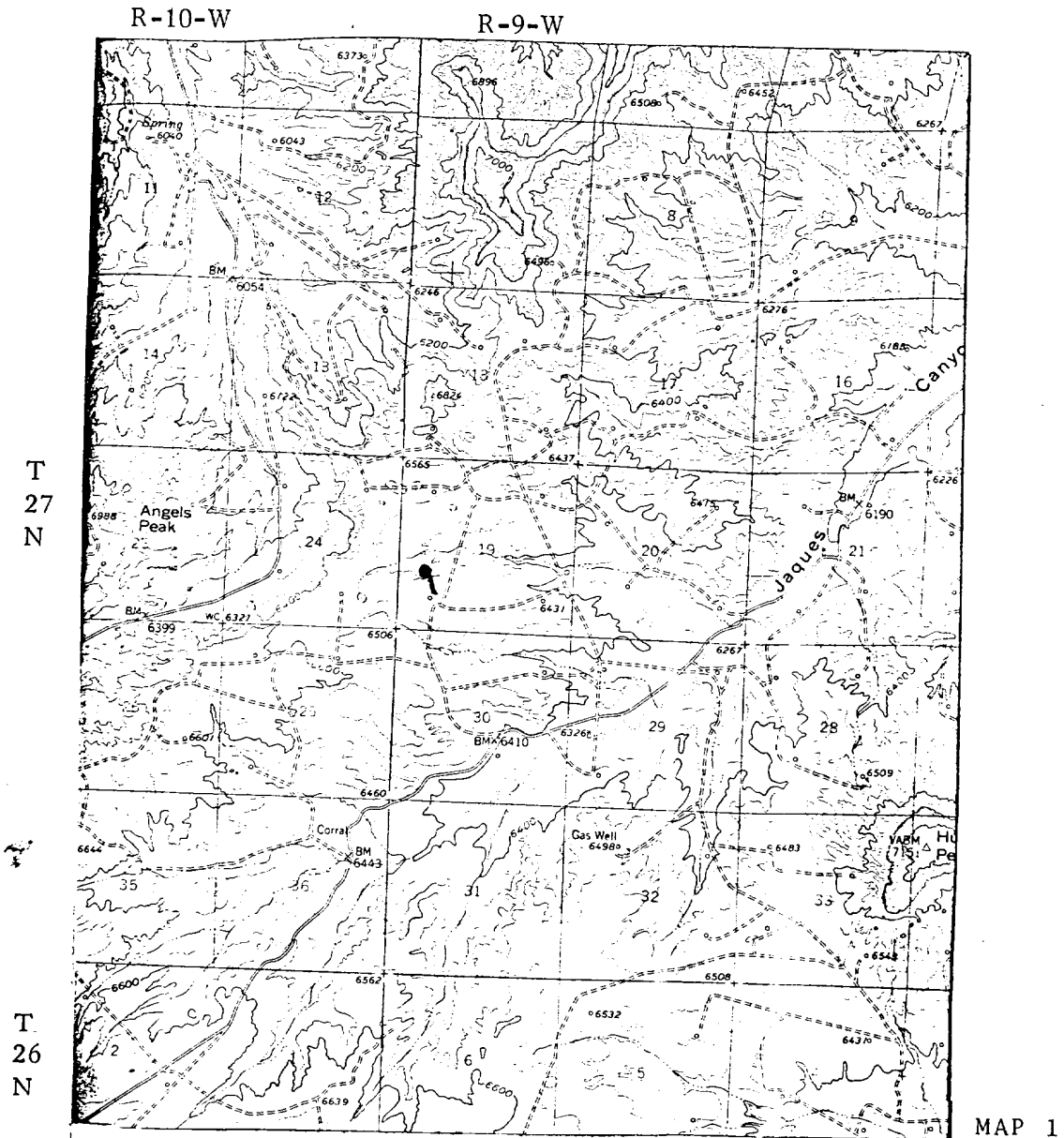
Series 900 Double Gate BOP, rated
at 3000 psi Working Pressure

When gas drilling operations begin a Shaffer type
50 or equivalent rotating head is installed on top of
the flow nipple and the flow line is converted into
a blowie line.



				ENG. REC.		DATE	
				DRAWN		J.L.H. 8-16-78	
				CHECKED			
				CHECKED			
				PROJ. APP			
				DESIGN			
PRT.	SEP.	DATE	TO	W.O.			
PRINT RECORD							
<div style="text-align: center;"> <p>El Paso Natural Gas Company</p> <p>TYPICAL LOCATION PLAT FOR MESAVERDE OR DAKOTA DRILL SITE</p> </div>							
SCALE: 1" = 50'						DWG. NO.	
						REV	

El Paso Natural Gas Company
Lodewick #9E
SW 19-27-9



LEGEND OF RIGHT-OF-WAYS

EXISTING ROADS	— — — — —
EXISTING PIPELINES	— + — + —
EXISTING ROAD & PIPELINE	— + — + —
PROPOSED ROADS	— — — — —
PROPOSED PIPELINES	+ + +
PROPOSED ROAD & PIPELINE	+ — + — +

R-9-W

