

UNITED STATES
DEPARTMENT OF THE INTERIOR
BUREAU OF LAND MANAGEMENT

FORM APPROVED
Budget Bureau No. 1004-0135
Expires: March 31, 1993

SUNDRY NOTICES AND REPORTS ON WELLS

Do not use this form for proposals to drill or to deepen or reentry to a different reservoir.
Use "APPLICATION FOR PERMIT—" for such proposals

SUBMIT IN TRIPLICATE

1. Type of Well

☐ Oil Well ☒ Gas Well ☐ Other

2. Name of Operator

Marathon Oil Company

3. Address and Telephone No.

P.O. Box 552 Midland, Tx. 79702

915-682-1626

4. Location of Well (Footage, Sec., T., R., M., or Survey Description)

UNIT LETTER P 990° FSL & 990° FEL

SEC 16, TWP-27-N, RNG-11-W

5. Lease Designation and Serial No.

SF-07887-2 A

6. If Indian, Allottee or Tribe Name

7. If Unit or CA, Agreement Designation

8. Well Name and No.

BOLACK 1-E

9. API Well No.

30-045-24237

10. Field and Pool, or Exploratory Area

BASIN DAKOTA

11. County or Parish, State

SAN JUAN CO., NEW MEXICO

12. CHECK APPROPRIATE BOX(s) TO INDICATE NATURE OF NOTICE, REPORT, OR OTHER DATA

TYPE OF SUBMISSION

- ☒ Notice of Intent
☐ Subsequent Report
☐ Final Abandonment Notice

TYPE OF ACTION

- ☒ Abandonment
☐ Recompletion
☐ Plugging Back
☐ Casing Repair
☐ Altering Casing
☐ Other _____
☐ Change of Plans
☐ New Construction
☐ Non-Routine Fracturing
☐ Water Shut-Off
☐ Conversion to Injection
☐ Dispose Water

(Note: Report results of multiple completion on Well Completion or Recompletion Report and Log form.)

13. Describe Proposed or Completed Operations (Clearly state all pertinent details, and give pertinent dates, including estimated date of starting any proposed work. If well is directionally drilled, give subsurface locations and measured and true vertical depths for all markers and zones pertinent to this work.)*

MARATHON LIL CO. PROPOSES TO ABANDON THIS WELL USING THE PROCEDURE SUMMARIZED BELOW.

MIRU PU. INSTALL BOP. CUT OFF TBG ABOVE PKR. PUSH PKR TO PBTD. POOH WITH TBG.

TH WITH OPEN ENDED TBG TO 6375'. LOAD HOLE WITH 9# MUD. SET CMT PLUG INSIDE AND OUTSIDE 4 1/2" CSG 5610'-5510' + 100% EXCESS. TAG PLUG

SET CMT PLUG INSIDE AND OUTSIDE 4 1/2" CSG 4050'-3800' + 100% EXCESS (BAD PIPE ACROSS THIS SECTION). SET CMT PLUG 2030-1930' INSIDE CSG. + 50% EXCESS. TAG PLUG

SET CMT PLUG 1820'-1720' INSIDE 4 1/2" CSG + 50% EXCESS. TAG PLUG

SET CMT PLUG 1007'-907' INSIDE 4 1/2" CSG + 50% EXCESS. TAG PLUG

SET CMT PLUG 287'-187' INSIDE 4 1/2" CSG + 50% EXCESS TAG PLUG

SET SURFACE PLUG 50' TO SURF. CUT OFF CSG 3' BELWO GROUND LEVEL AND INSTALL DRY HOLE MARKER. RDPU. CLEAN LOCATION

NOTE ALL SPACE BETWEEN PLUGS TO BE FILLED WITH MINIMUM 9# PER GALLON MUD. ALL PLUGS TO BE BALANCED AND TAGGED.

RECEIVED

JAN 19 1993

OIL CON. DIV.
DIST. 3

14. I hereby certify that the foregoing is true and correct

Signed Thomas M. Price THOMAS M. PRICE

Title ADVANCED ENG. TECH.

Date 1-8-93

(This space for Federal or State office use)

Approved by _____

Conditions of approval, if any: _____

Title _____

APPROVED

JAN 14 1993

AREA MANAGER

Title 18 U.S.C. Section 1001, makes it a crime for any person knowingly and willfully to make to any department or agency of the United States any false, fictitious or fraudulent statements or representations as to any matter within its jurisdiction.

*See instruction on Reverse Side

PROPOSED P&A

BASIN (DAKOTA)

BOLACK WELL NO. 1-E

990' FSL & 990' FEL

SECTION 16, T-27-N, R-11-W

SAN JUAN COUNTY, NEW MEXICO

STATUS: SHUT-IN

TD: 6700' PBD: 6603'

GL: 6284' DF: 6298'

SURFACE: 8-5/8", 24#, K-55 SET @ 237'. CMT'D
W/175 SX. CIRC'D TO SURFACE.

PRODUCTION: 4-1/2", 10.5#, K-55 SET @ 6642'.
CMT 3 STAGES. 1ST STAGE 6642'

325 SX

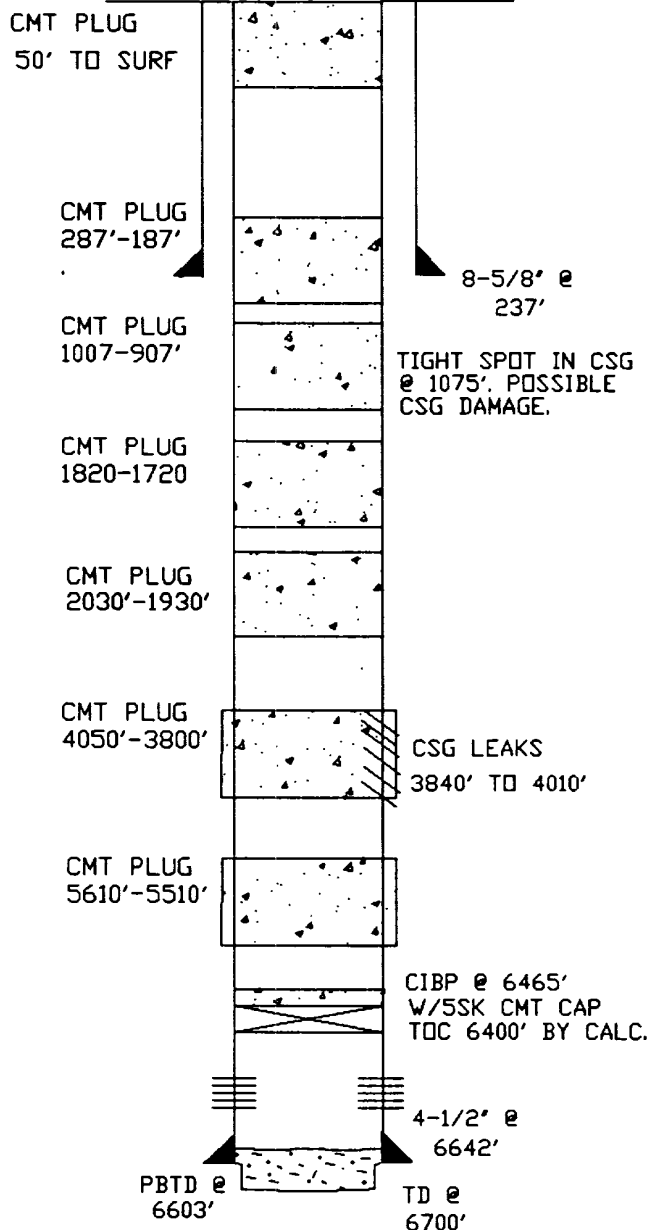
2ND STAGE DV TOOL @ 3519'

675 SX

3RD STAGE. DV TOOL @ 1083'

400 SX. CMT RETURNS TO SURFACE ON LAST STAGE

TDC ON FIRST STAGE @ 6300' BY COMP BOND LOG
NO BOND ACROSS PC BY COMP. BOND LOG



BASIN (DAKOTA)
 BOLACK WELL NO. 1-E
 990' FSL & 990' FEL
 SECTION 16, T-27-N, R-11-W
 SAN JUAN COUNTY, NEW MEXICO

STATUS: SHUT-IN

TD: 6700' PBTD: 6603'
 GL: 6284' DF: 6298'

TIGHT SPOT IN CSG
 @ 1075'. POSSIBLE
 CSG DAMAGE.

SURFACE: 8-5/8", 24#, K-55 SET @ 237'. CMT'D
 W/175 SX. CIRC'D TO SURFACE.

CSG LEAKS
 3840' TO 4010'

PRODUCTION: 4-1/2", 10.5#, K-55 SET @ 6642'.
 CMT 3 STAGES. 1ST STAGE 6642'
 325 SX
 2ND STAGE DV TOOL @ 3519'
 675 SX
 3RD STAGE. DV TOOL @ 1083'
 400 SX. CMT RETURNS TO SURFACE ON LAST STAGE

TOC ON FIRST STAGE @ 6300' BY COMP BOND LOG
 NO BOND ACROSS PC BY COMP. BOND LOG

TUBING 2 3/8" @ 6373'
 BAKER FULL BORE MODEL "C"
 W/SHEARED SAFTEY @ 6373

CIBP @ 6465'
 W/SSK CMT CAP
 TOC 6400' BY CALC.

PRESENT COMPLETION: DAKOTA

6543'-63' W/2 SPF.

4-1/2" @
 6642'

PBTD @
 6603'

TD @
 6700'

HISTORY: DRILLED IN MAY, 1980. COMPLETED IN DAKOTA F/6543'-63'. A/1000 GALS.
 F/75000 GALS & 146000# 20/40 SD. IP'D 160 MCFD & BCP. A/1500 GALS &
 94 MCF OF N2 IN FEBRUARY, 1991. THE WELL IS CURRENTLY SHUT-IN.

11-14-92: POOH W/LOCKSET PKR. RAN 3.75" GAUGE RING TO 6475. HIT BRIDGE
 PROBABLE RUBBER OFF LOCK SET. SET CIBP @ 6465'. DUMPED 5 SX CMT TOC 6400' BY CALC.
 TEST TO 500 PSI LEAKED OFF TO 200 PSI IN 5 MINUTES. RIH W/BAKER FULL BORE
 MODEL "C". (3.71" OD). LOCATED LEAKS 3840'-4010'. STUCK PKR @ 1075' COMING OUT OF HOLE.
 WORKED PKR FREE GOING DOWN HOLE. PKR WOULD NOT SET. NO UPWARD MOVEMENT.
 RIH TO 6321' PKR STILL WOULD NOT SET. NO UPWARD MOVEMENT. CIRC HOLE. STILL NO UP
 TRAVEL. LEFT PKR @ 6373' UNSET. RDMO.

MODIFIED BY TOM PRICE 12-1-92
 PREPARED BY B. D. LOCKHART

IN REPLY REFER TO
(019)

UNITED STATES DEPARTMENT OF THE INTERIOR

BUREAU OF LAND MANAGEMENT
FARMINGTON RESOURCE AREA
1235 LA PLATA HIGHWAY
FARMINGTON, NEW MEXICO 87401

Attachment to Notice of

Re: Permanent Abandonment

Intention to Abandon

Well: 1-E Belack

CONDITIONS OF APPROVAL

1. Plugging operations authorized are subject to the attached "General Requirements for Permanent Abandonment of Wells on Federal Leases."
2. Mark Kelly with the Farmington Office is to be notified at least 24 hours before the plugging operations commence (505) 599-8907
3. Blowout prevention equipment is required.
4. The following modifications to your plugging program are to be made (when applicable):

1.) Place cement plug from 4050' to 3700' plus 100% excess inside and outside of the casing. (Top of Mesaville - 3750')

2.) Place cement plug from 1007' to 748' plus 50% excess inside the casing. (Oso Alamo 798'-960')

Office Hours: 7:45 a.m. to 4:30 p.m.