

NO. OF COPIES RECEIVED	
DISTRIBUTION	
SANTA FE	
FILE	
U.S.G.S.	
LAND OFFICE	
OPERATOR	

NEW MEXICO OIL CONSERVATION COMMISSION

Form C-101
Revised 1-1-65

5A. Indicate Type of Lease
STATE ☐ FEE ☒

5. State Oil & Gas Lease No.

APPLICATION FOR PERMIT TO DRILL, DEEPEN, OR PLUG BACK

1a. Type of Work DRILL <input checked="" type="checkbox"/> DEEPEN <input type="checkbox"/> PLUG BACK <input type="checkbox"/>		7. Unit Agreement Name
b. Type of Well OIL WELL <input type="checkbox"/> GAS WELL <input checked="" type="checkbox"/> OTHER <input type="checkbox"/> SINGLE ZONE <input type="checkbox"/> MULTIPLE ZONE <input checked="" type="checkbox"/>		8. Farm or Lease Name Riddle Gas Unit A
2. Name of Operator Tenneco Oil Company		9. Well No. 1M
3. Address of Operator Box 3249, Englewood, CO 80155		10. Field and Pool, or Wildcat Basin Dakota/Blanco M.V.
4. Location of Well UNIT LETTER I LOCATED 1590 FEET FROM THE South LINE AND 570 FEET FROM THE East LINE OF SEC. 9 TWP. 27N RGE. 9W NMPM		12. County San Juan
19. Proposed Depth 6840'		19A. Formation Dakota/Mesaverde
20. Rotary or C.T. Rotary		21. Elevations (Show whether DF, RT, etc.) 6158' GR
21A. Kind & Status Plug. Bond General		21B. Drilling Contractor Four Corners
22. Approx. Date Work will start ASAP		

23.

PROPOSED CASING AND CEMENT PROGRAM

SIZE OF HOLE	SIZE OF CASING	WEIGHT PER FOOT	SETTING DEPTH	SACKS OF CEMENT	EST. TOP
12-1/4"	9-5/8"	36#	+ 250'	Circ. to surface	
8-3/4"	7"	23#	+ 3550'	2-stage, circ. to surface	
6-1/4"	4-1/2"	10.5#, 11.6#	- 6840'	Circ to liner top.	

See attached drilling procedure

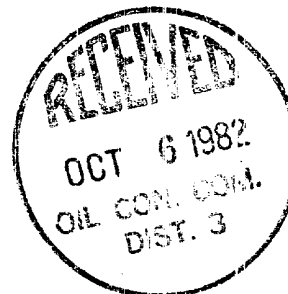
Gas is dedicated

Original APD approved 12/14/81, expired 6/9/82

Approval for non-standard location received 4/29/81

APPROVAL VALID
FOR 60 DAYS UNLESS
DRILLING COMMENCED,

EXPIRES April 6, 1983



IN ABOVE SPACE DESCRIBE PROPOSED PROGRAM: IF PROPOSAL IS TO DEEPEN OR PLUG BACK, GIVE DATA ON PRESENT PRODUCTIVE ZONE AND PROPOSED NEW PRODUCTIVE ZONE. GIVE BLOWOUT PREVENTER PROGRAM, IF ANY.

I hereby certify that the information above is true and complete to the best of my knowledge and belief.

Signed Ken Russell Title Sr. Production Analyst Date October 4, 1982

(This space for State Use)

APPROVED BY [Signature] TITLE SUPERVISOR DISTRICT # 3 DATE OCT 6 1982

CONDITIONS OF APPROVAL, IF ANY:

ASL 1353

All distances must be from the outer boundaries of the Section.

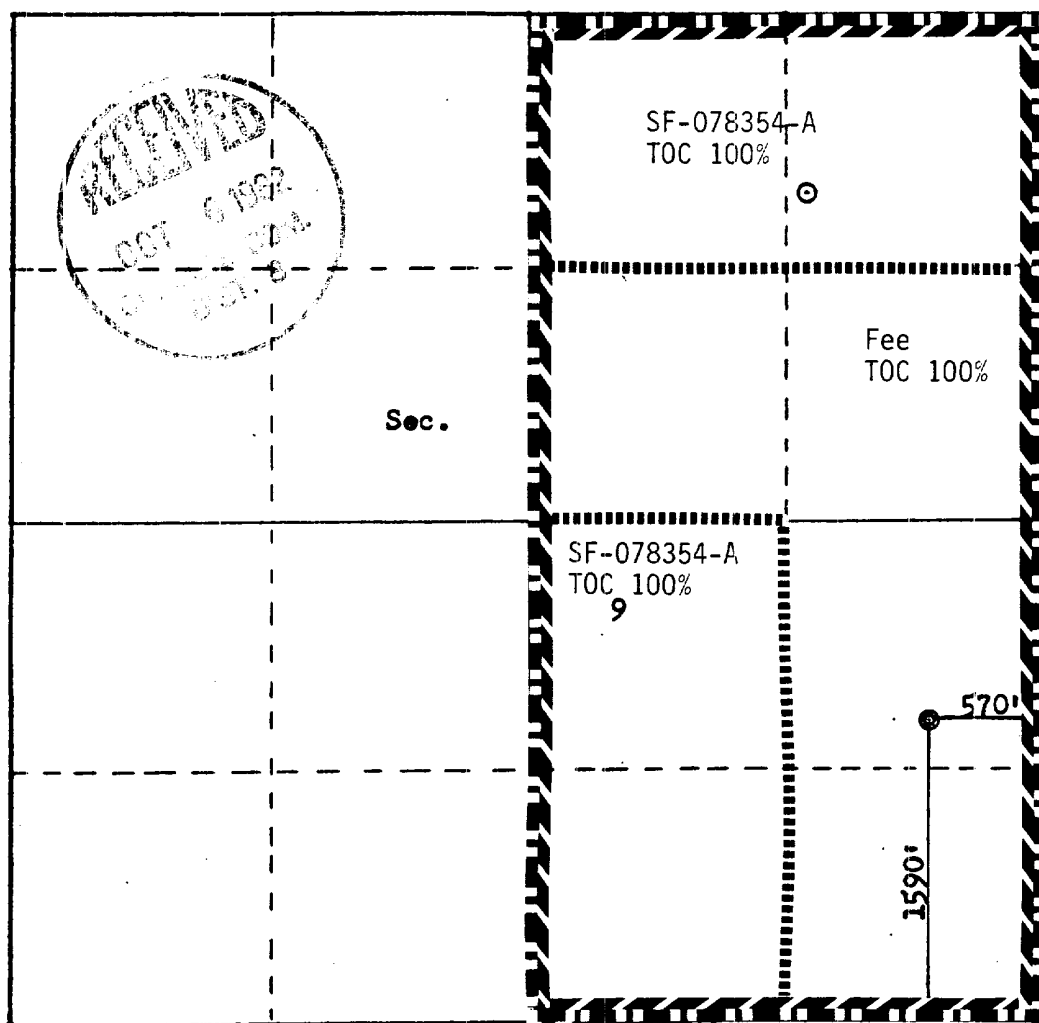
Operator TENNECO OIL COMPANY			Lease RIDDLE GAS UNIT #A#		Well No. 1M
Unit Letter I	Section 9	Township 27N	Range 9W	County San Juan	
Actual Footage Location of Well: 1590 feet from the South line and 570 feet from the East line					
Ground Level Elev: 6158	Producing Formation Dakota/Mesaverde		Pool Basin Dakota/Blanco Mesaverde		Dedicated Acreage: E 316.18 Acres

1. Outline the acreage dedicated to the subject well by colored pencil or hatchure marks on the plat below.
2. If more than one lease is dedicated to the well, outline each and identify the ownership thereof (both as to working interest and royalty).
3. If more than one lease of different ownership is dedicated to the well, have the interests of all owners been consolidated by communitization, unitization, force-pooling, etc?

☐ Yes ☐ No If answer is "yes," type of consolidation _____

If answer is "no," list the owners and tract descriptions which have actually been consolidated. (Use reverse side of this form if necessary.) _____

No allowable will be assigned to the well until all interests have been consolidated (by communitization, unitization, forced-pooling, or otherwise) or until a non-standard unit, eliminating such interests, has been approved by the Commission.



CERTIFICATION

I hereby certify that the information contained herein is true and complete to the best of my knowledge and belief.

Name
Ken Russell

Position
Sr. Production Analyst

Company
Tenneco Oil Company

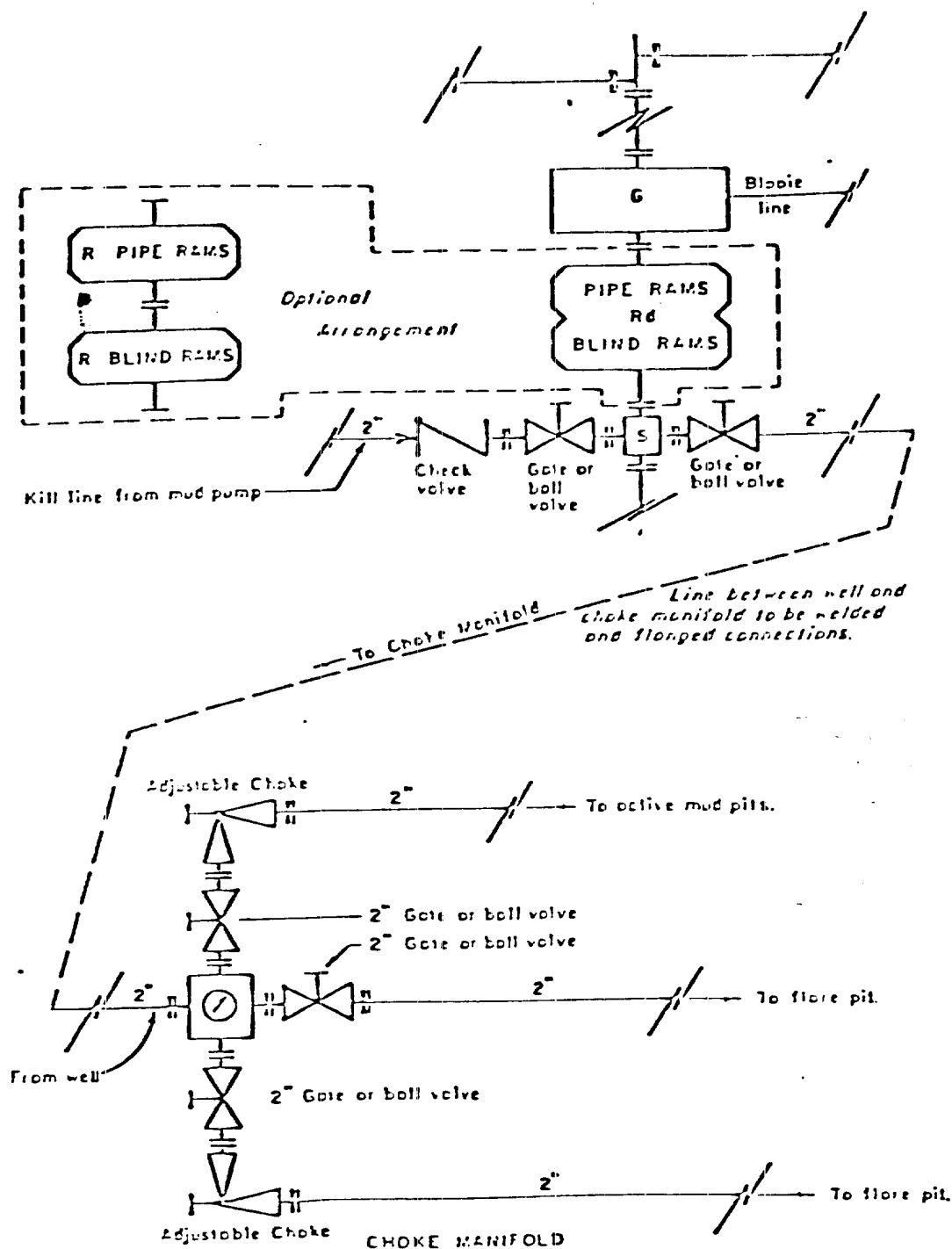
Date
September 7, 1982

I hereby certify that the well location shown on this plat was plotted from field notes of actual surveys made by me or under my supervision, and that the same is true and correct to the best of my knowledge and belief.

Date Surveyed
February 2, 1981

Registered Professional Engineer and Land Surveyor
Fred E. Kerr, Jr.

Certificate No.
3950



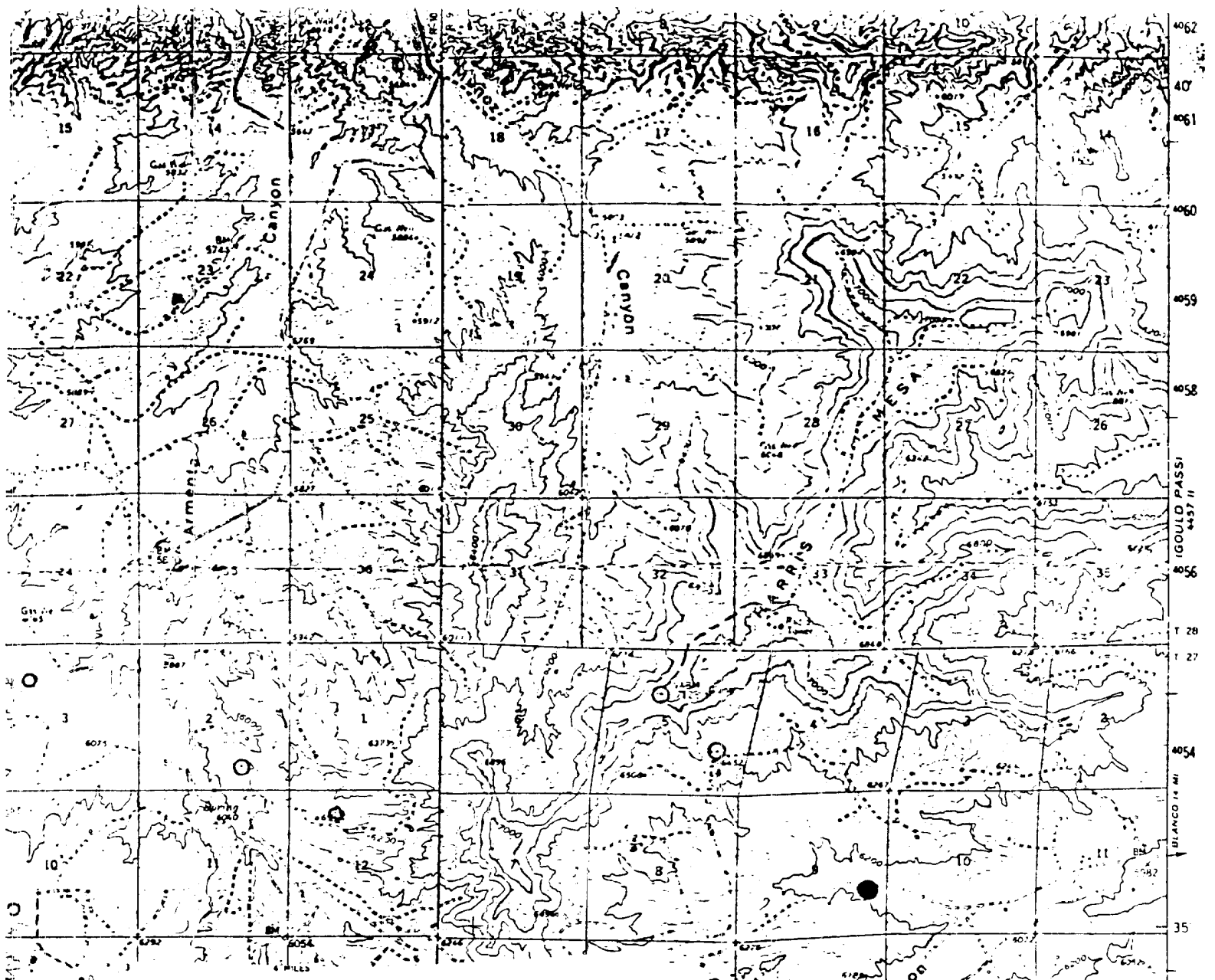
All equipment to be 3,000 psi working pressure except as noted.

- Rd Double ram type preventer with two sets of rams.
- R Single ram type preventer with one set of rams.
- S Drilling spool with side outlet connections for choke and kill lines.
- G Rotating head 150 psi working pressure minimum

ARRANGEMENT C

TENNECO OIL COMPANY
 ROCKY MOUNTAIN DIVISION
 REQUIRED MINIMUM
 BLOWOUT PREVENTER AND
 CHOKE MANIFOLD

J. VAGILL 10-26-78 EVI



Vicinity Map for
 TENNECO OIL COMPANY #1M RIDDLE GAS UNIT "A"
 1590'FSL 570'FEL Sec. 9-T27N-R9W
 SAN JUAN COUNTY, NEW MEXICO

