

UNITED STATES
DEPARTMENT OF THE INTERIOR
GEOLOGICAL SURVEY

30-045-25581

APPLICATION FOR PERMIT TO DRILL, DEEPEN, OR PLUG BACK

1a. TYPE OF WORK

DRILL ☒DEEPEN ☐PLUG BACK ☐

b. TYPE OF WELL

OIL
WELL ☐GAS
WELL ☒

OTHER

SINGLE
ZONE ☒MULTIPLE
ZONE ☐

2. NAME OF OPERATOR

Amoco Production Company

3. ADDRESS OF OPERATOR

501 Airport Drive, Farmington, New Mexico 87401

4. LOCATION OF WELL (Report location clearly and in accordance with any State requirements.)

At surface

850 FNL x 1670 FEL

At proposed prod. zone

Same

14. DISTANCE IN MILES AND DIRECTION FROM NEAREST TOWN OR POST OFFICE*

10.5 miles southeast of Bloomfield, New Mexico

15. DISTANCE FROM PROPOSED*

LOCATION TO NEAREST
PROPERTY OR LEASE LINE, FT.
(Also to nearest drig. unit line, if any)

850'

18. DISTANCE FROM PROPOSED LOCATION*

TO NEAREST WELL, DRILLING, COMPLETED,
OR APPLIED FOR, ON THIS LEASE, FT.

2155'

16. NO. OF ACRES IN LEASE

1753.36

19. PROPOSED DEPTH

6926'

17. NO. OF ACRES ASSIGNED
TO THIS WELL

F 320

20. ROTARY OR CABLE TOOLS

Rotary

21. ELEVATIONS (Show whether DF, RT, GR, etc.)

6459' GL

22. APPROX. DATE WORK WILL START*

As soon as permitted

23.

PROPOSED CASING AND CEMENTING PROGRAM

SIZE OF HOLE	SIZE OF CASING	WEIGHT PER FOOT	SETTING DEPTH	QUANTITY OF CEMENT
12-1/4"	8-5/8"	24.0# K-55	300'	
7-7/8"	4-1/2"	10.5# K-55	6926'	

OPERATOR'S AUTHORITY ARE
NOT TO BE USED IN CONNECTION WITH ATTACHED
"GENERAL RELEASES"This action is subject to administrative
appeal pursuant to 30 CFR 290.354 cu. ft. Class B with 2% CaCl₂.
924 cu. ft. Class B 50:50 POZ, 2#
med tuf plug/sx, .8% FLA. Tail in
with 118 cu. ft. Class B Neat.

Amoco proposes to drill the above well to further develop the Basin Dakota reservoir. The well will be drilled to the surface casing point using native mud. The well will then be drilled to TD with a low solids non-dispersed mud system. Completion design will be based on open hole logs. Copy of all logs will be filed upon completion. Amoco's standard blowout prevention will be employed; see attached drawing for blowout preventer design.

Gas produced from this well is dedicated to El Paso Natural Gas under contract No. 56742. The J. C. Gordon "D" No. 4E was previously approved as a dual Basin Dakota/Undesignated Gallup.

IN ABOVE SPACE DESCRIBE PROPOSED PROGRAM: If proposal is to deepen or plug back, give data on present productive zone and proposed new productive zone. If proposal is to drill or deepen directionally, give pertinent data on subsurface locations and measured and true vertical depths. Give blowout preventer program, if any.

24.

Original Signed By
D. H. SHOEMAKER

District Engineer

DATE January 21, 1983

(This space for Federal or State office use)

PERMIT NO.

APPROVAL DATE

APPROVED BY

TITLE

CONDITIONS OF APPROVAL, IF ANY:

APPROVED
AS AMENDEDFEB 12 1983
JAMES F. SIMS
DISTRICT ENGINEER

NMOC

(OIL CONSERVATION DIVISION

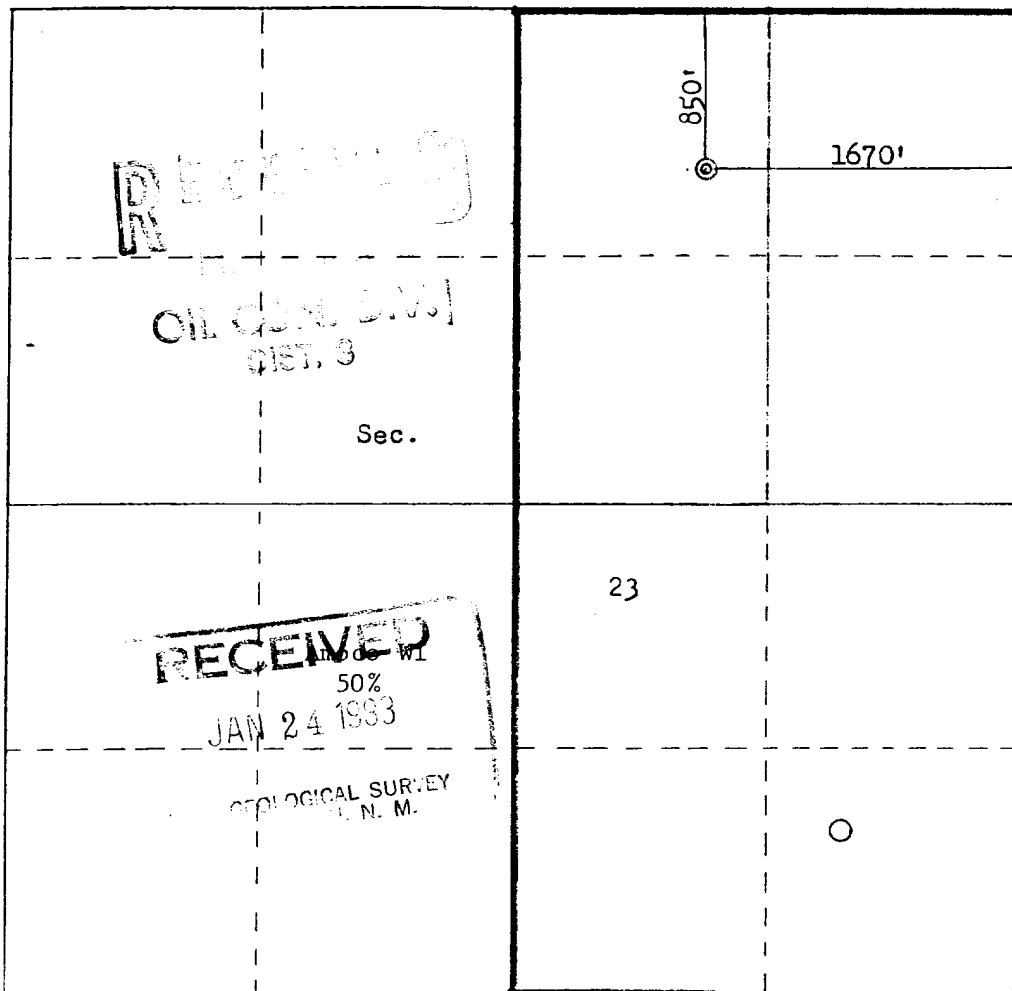
STATE OF NEW MEXICO
ENERGY AND MINERALS DEPARTMENT

P. O. BOX 2088
SANTA FE, NEW MEXICO 87501

107
10-1-78

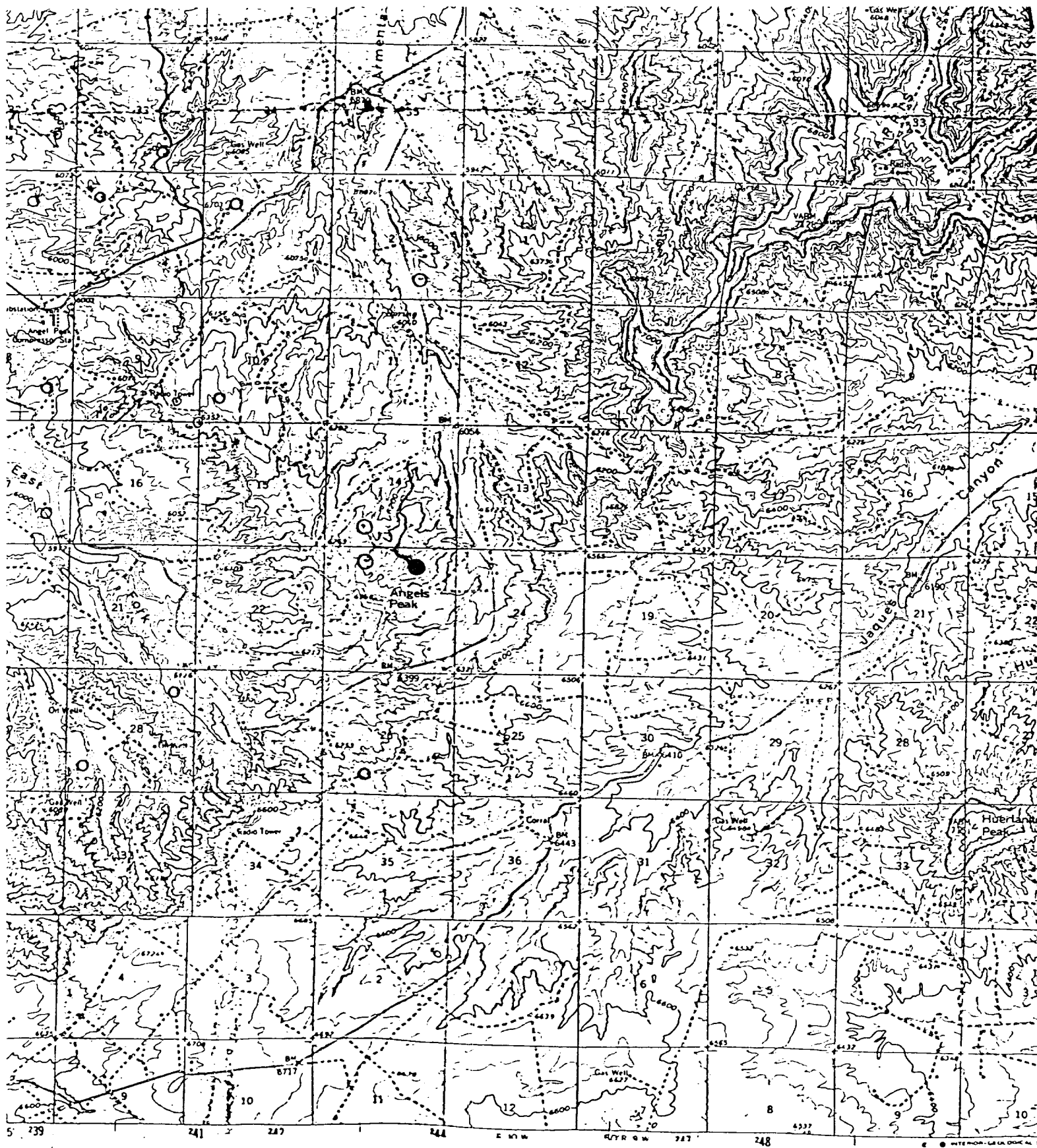
All distances must be from the outer boundaries of the Section.

Operator AMOCO PRODUCTION COMPANY			Lease J. C. GORDON "D"		Well No. 4E
Unit Letter B	Section 23	Township 27N	Range 10W	County San Juan	
Actual Footage Location of Well: 850 feet from the North line and 1670 feet from the East line					
Ground Level Elev: 6459	Producing Formation Dakota	Pool Basin Dakota		Dedicated Acreage: E 320 Acres	
1. Outline the acreage dedicated to the subject well by colored pencil or hatchure marks on the plat below. 2. If more than one lease is dedicated to the well, outline each and identify the ownership thereof (both as to working interest and royalty). 3. If more than one lease of different ownership is dedicated to the well, have the interests of all owners been consolidated by communitization, unitization, force-pooling, etc? <input checked="" type="checkbox"/> Yes <input type="checkbox"/> No If answer is "yes," type of consolidation <u>Joint Owner Acreage - All owners approved drilling of well</u> If answer is "no," list the owners and tract descriptions which have actually been consolidated. (Use reverse side of this form if necessary.) _____ No allowable will be assigned to the well until all interests have been consolidated (by communitization, unitization, forced-pooling, or otherwise) or until a non-standard unit, eliminating such interests, has been approved by the Commission.					

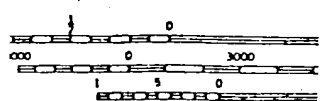


Scale: 1"=1000'

CERTIFICATION	
I hereby certify that the information contained herein is true and complete to the best of my knowledge and belief.	
<i>Dale H. Shoemaker</i> Name D.H. SHOEMAKER	
Position District Engineer	
Company Amoco Production Company	
Date JANUARY 7, 1983	
I hereby certify that the well location shown on this plat was plotted from field notes of actual surveys made by me or under my supervision, and that the same is true and correct to the best of my knowledge and belief.	
Date Surveyed December 15, 1980	
Registered Professional Engineer and Land Surveyor <i>Fred B. Kerr Jr.</i> Fred B. Kerr Jr.	
Certificate No. B. KERR, JR. 3950	



Vicinity Map for
 AMOCO PRODUCTION CO. #4E J. C. Gordon "D"
 860'FNL 1520'FEL Sec. 23-T27N-R10W
 SAN JUAN COUNTY, NEW MEXICO



ROAD C
 Medium duty
 Unimproved

