

UNITED STATES
DEPARTMENT OF THE INTERIOR
GEOLOGICAL SURVEY

30-045-25638

APPLICATION FOR PERMIT TO DRILL, DEEPEN, OR PLUG BACK

1a. TYPE OF WORK

DRILL ☒DEEPEN ☐PLUG BACK ☐

b. TYPE OF WELL

OIL
WELL ☐GAS
WELL ☒

OTHER

SINGLE
ZONE ☒MULTIPLE
ZONE ☐

2. NAME OF OPERATOR

Amoco Production Company

3. ADDRESS OF OPERATOR

501 Airport Drive, Farmington, NM 87401

4. LOCATION OF WELL (Report location clearly and in accordance with all State requirements)

At surface

1850' FSL x 1520' FEL

At proposed prod. zone Same

14. DISTANCE IN MILES AND DIRECTION FROM NEAREST TOWN OR POST OFFICE*

Approx. 10.6 miles southeast of Bloomfield, New Mexico

15. DISTANCE FROM PROPOSED*

LOCATION TO NEAREST

PROPERTY OR LEASE LINE, FT.

(Also to nearest drlg. unit line, if any)

1520'

18. DISTANCE FROM PROPOSED LOCATION*

TO NEAREST WELL, DRILLING, COMPLETED,
OR APPLIED FOR, ON THIS LEASE, FT.

1500'

21. ELEVATIONS (Show whether DF, RT, GR, etc.)

6221' GL

DRILLING OPERATIONS AUTHORIZED ARE
SUBJECT TO COMPLIANCE WITH ATTACHED

23.

"GENERAL REQUIREMENTS"
PROPOSED CASING AND CEMENTING PROGRAMThis action is subject to a
appeal pursuant to 30 C.F.R. 250.

SIZE OF HOLE	SIZE OF CASING	WEIGHT PER FOOT	SETTING DEPTH
12-1/2"	8-5/8"	24.0# K-55	300'
7-7/8"	4-1/2"	10.5# K-55	6563'

QUANTITY OF CEMENT
350 cu. ft. Class B x 2% CaCl₂
924 cu. ft. Class B 50:50 POZ
2# med tuf plug/sx, .8% FLA, tail-in
x 118 cu. ft. Class B neat.

Amoco proposes to drill the above well to further develop the Basin Dakota reservoir. The well will be drilled to the surface casing point using native mud. The well will then be drilled to TD with a low solids non-dispersed mud system. Completion design will be based on open hole logs. Copy of all logs will be filed upon completion. Amoco's standard blowout prevention will be employed; see attached drawing for blowout preventer design.

The gas from this well is dedicated to El Paso Natural Gas Co. under contract No. 56742.

IN ABOVE SPACE DESCRIBE PROPOSED PROGRAM: If proposal is to deepen or plug back, give data on present productive zone and proposed new productive zone. If proposal is to drill or deepen directionally, give pertinent data on subsurface locations and measured and true vertical depths. Give blowout preventer program, if any.

24.

SIGNED Original Signed By D. H. SHOEMAKER TITLE District Engineer DATE 1-25-83
(This space for Federal or State office use)

PERMIT NO. APPROVAL DATE

APPROVED BY TITLE
CONDITIONS OF APPROVAL, IF ANY:

RECEIVED
AS APPLIED
DATE
Jens Sines
District Engineer

NMOCC



All distances must be from the outer boundaries of the Section.

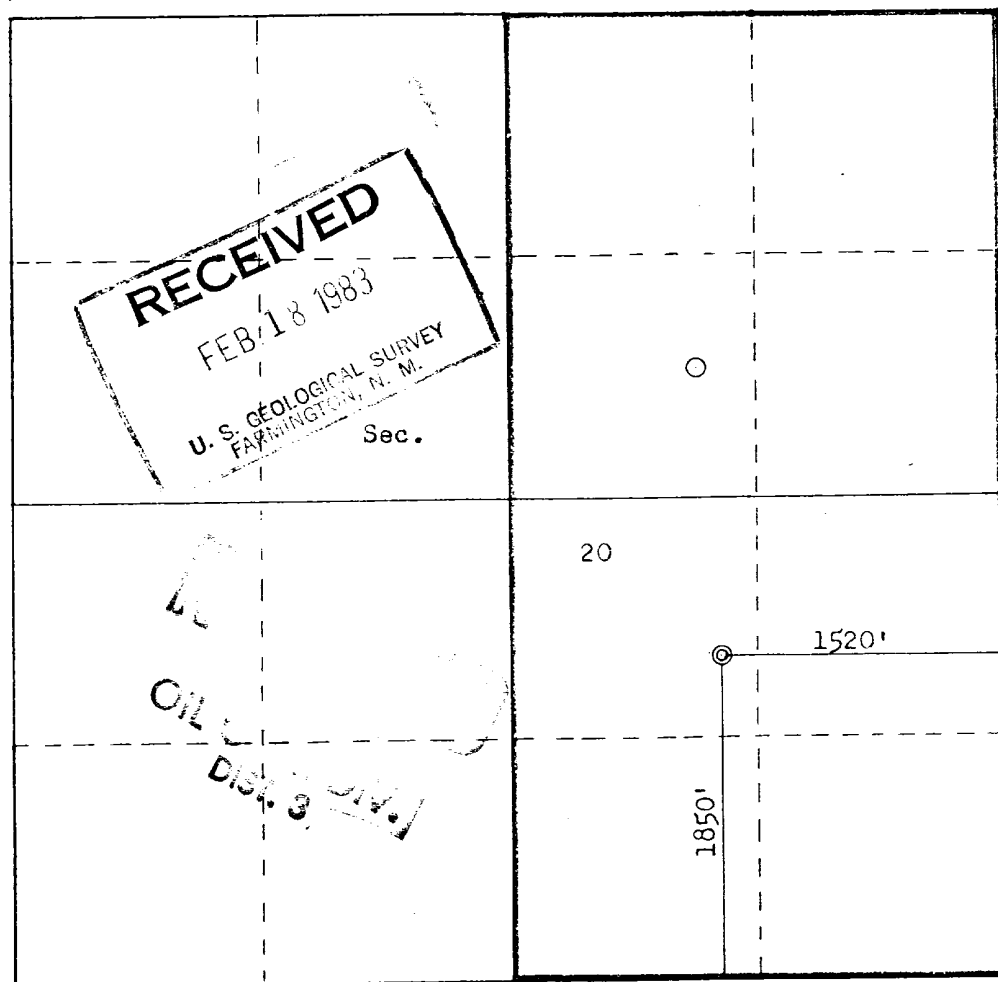
Operator AMOCO PRODUCTION COMPANY			Lease ① - C. A. McADAMS "D"		Well No. 2E
Unit Letter J	Section 20	Township 27N	Range 10W	County San Juan	
Actual Footage Location of Well: 1850 feet from the South line and 1520 feet from the East line					
Ground Level Elev. 6221	Producing Formation Dakota		Pool Basin Dakota		Dedicated Acreage: 320 Acres

1. Outline the acreage dedicated to the subject well by colored pencil or hachure marks on the plat below.
2. If more than one lease is dedicated to the well, outline each and identify the ownership thereof (both as to working interest and royalty).
3. If more than one lease of different ownership is dedicated to the well, have the interests of all owners been consolidated by communitization, unitization, force-pooling, etc?

☐ Yes ☐ No If answer is "yes," type of consolidation _____

If answer is "no," list the owners and tract descriptions which have actually been consolidated. (Use reverse side of this form if necessary.) _____

No allowable will be assigned to the well until all interests have been consolidated (by communitization, unitization, forced-pooling, or otherwise) or until a non-standard unit, eliminating such interests, has been approved by the Commission.



Scale: 1"=1000'

CERTIFICATION

I hereby certify that the information contained herein is true and complete to the best of my knowledge and belief.

D. H. Shoemaker

Name
D. H. SHOEMAKER

Position
DISTRICT ENGINEER

Company
AMOCO PRODUCTION COMPANY

Date
JANUARY 11, 1983

I hereby certify that the well location shown on this plat was plotted from field notes of actual surveys made by me or under my supervision, and that the same is true and correct to the best of my knowledge and belief.

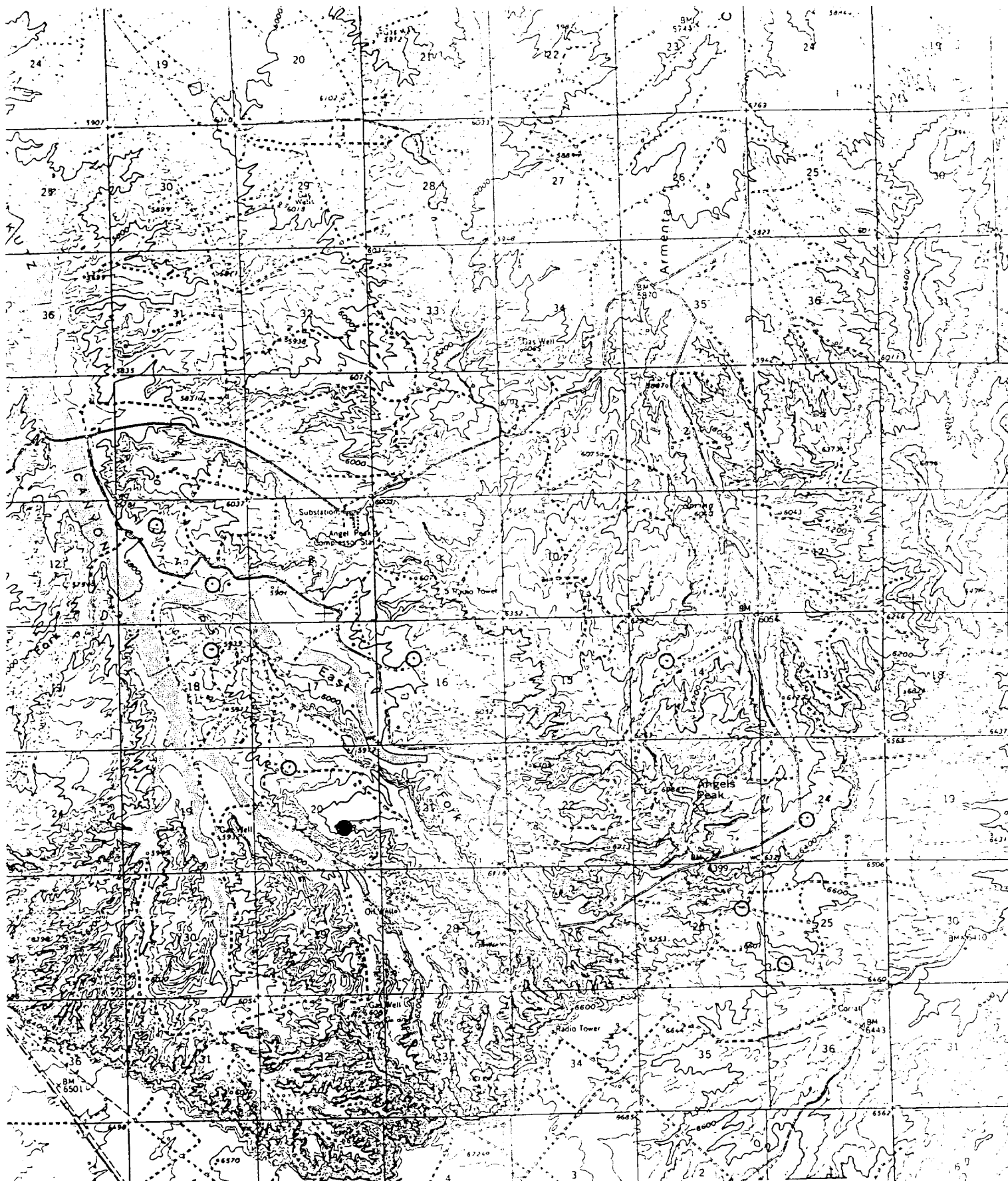
Date Surveyed
December 18, 1982

Registered Professional Engineer and Land Surveyor

Fred B. Kerr Jr.
Fred B. Kerr Jr.

Certificate No. **3950**





Vicinity Map for
 AMOCO PRODUCTION COMPANY #2E USA-C. A. McADAMS "D"
 1850'FSL 1520'FEL Sec. 20-T27N-R10W
 SAN JUAN COUNTY, NEW MEXICO

