

5 BLM, Fmn 1 File

1 Southland 1 LAE

1 Texaco
Form Approved.
Budget Bureau No. 42-R1424

UNITED STATES
DEPARTMENT OF THE INTERIOR
GEOLOGICAL SURVEY

SUNDRY NOTICES AND REPORTS ON WELLS

(Do not use this form for proposals to drill or to deepen or plug back to a different reservoir. Use Form 9-331-C for such proposals.)

1. oil ☐ gas ☒ other ☐

2. NAME OF OPERATOR
DUGAN PRODUCTION CORP.

3. ADDRESS OF OPERATOR
P O Box 208, Farmington, NM 87499

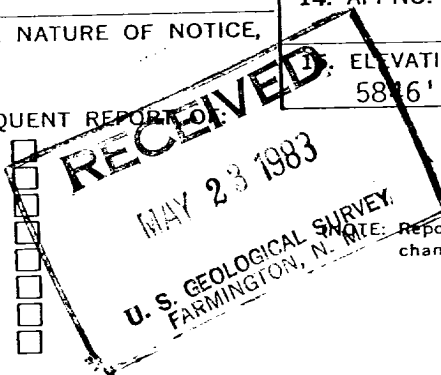
4. LOCATION OF WELL (REPORT LOCATION CLEARLY. See space 17 below.)
AT SURFACE: 810' FNL - 1080' FEL
AT TOP PROD. INTERVAL:
AT TOTAL DEPTH:

16. CHECK APPROPRIATE BOX TO INDICATE NATURE OF NOTICE, REPORT, OR OTHER DATA

REQUEST FOR APPROVAL TO:

TEST WATER SHUT-OFF ☐
FRACTURE TREAT ☐
SHOOT OR ACIDIZE ☐
REPAIR WELL ☐
PULL OR ALTER CASING ☐
MULTIPLE COMPLETE ☐
CHANGE ZONES ☐
ABANDON* ☐
(other) Change of Plans ☐

SUBSEQUENT REPORT TO:



5. LEASE
NM 33025

6. IF INDIAN, ALLOTTEE OR TRIBE NAME

7. UNIT AGREEMENT NAME

8. FARM OR LEASE NAME
Hugh Lake

9. WELL NO.
3

10. FIELD OR WILDCAT NAME

** Wildcat Pictured Cliffs **

11. SEC., T., R., M., OR BLK. AND SURVEY OR AREA
Sec. 33, T27N, R12W

12. COUNTY OR PARISH
San Juan

13. STATE
NM

14. API NO.

15. ELEVATIONS (SHOW DF, KDB, AND WD)
5846' GL

17. DESCRIBE PROPOSED OR COMPLETED OPERATIONS (Clearly state all pertinent details, and give pertinent dates, including estimated date of starting any proposed work. If well is directionally drilled, give subsurface locations and measured and true vertical depths for all markers and zones pertinent to this work.)*

Plan to change objective to Pictured Cliffs Formation rather than Farmington Sandstone as originally approved. Therefore, the following items will be modified:

Casing Program 8-3/4" hole, 7" 26# casing set at 90' w/ 41 cf cement to surface.
5-1/8" hole, 2-7/8" 6.4# csg. set at 1350' w/ 250 cf cement to surface.

Proposed depth: 1350'
Dedicated acres: 160

See attached revised Operations Plan, BOP sketch, Location Layout, and Plat.

Subsurface Safety Valve: Manu. and Type _____ Set @ _____ Ft.

18. I hereby certify that the foregoing is true and correct

SIGNED Jim L. Jacobs TITLE Geologist DATE 5-19-83

(This space for Federal or State office use)

APPROVED BY _____
CONDITIONS OF APPROVAL, IF ANY:

TITLE

DATE

NMOCC

APPROVED
AS AMENDED

MAY 25 1983
JAMES F. SIMS
DISTRICT ENGINEER

OPERATIONS PLAN

Hugh Lake #3 Well
T-27-N, R-12-W, NMPM
 Section: 33
 810' FNL & 1080' FEL
 San Juan County, New Mexico

EXPECTED FORMATION TOPS:

Kirtland	180'
Fruitland	925'
Pictured Cliffs	1230'
Total Depth	1350'

LOGGING PROGRAM:

Catch Samples every 10' from 1000 feet to total depth.

CASING PROGRAM:

<u>Hole Size</u>	<u>Casing Size</u>	<u>Wt./Ft.</u>	<u>Setting Depth</u>	<u>Grade & Condition</u>	<u>Cementing Program</u>
8 3/4"	7"	26#	90'	K-55 B	41 Cu.ft. to Surface
5 1/8"	2 7/8"	6.4#	1250'	J-55 B	250 cu.ft. to surface

WELLHEAD EQUIPMENT:

Casinghead & screw-type,
 1000 psi working pressure, bradenhead; tubinghead-screw-type, 1000 psi

Dugan Production Corp.

Office	325-1821
Tom Dugan	325-5694
Jim Jacobs	325-8353
John Roe	326-1034
Sherman Dugan, Geo	327-4287
Jerry McHugh, Land	327-3580
Kurt Fagrelus, Geo	334-7142

Radio Dispatch

327-2676

RECEIVED
 JUL 26 1983
 OIL CON. DIV.
 DIST. 3

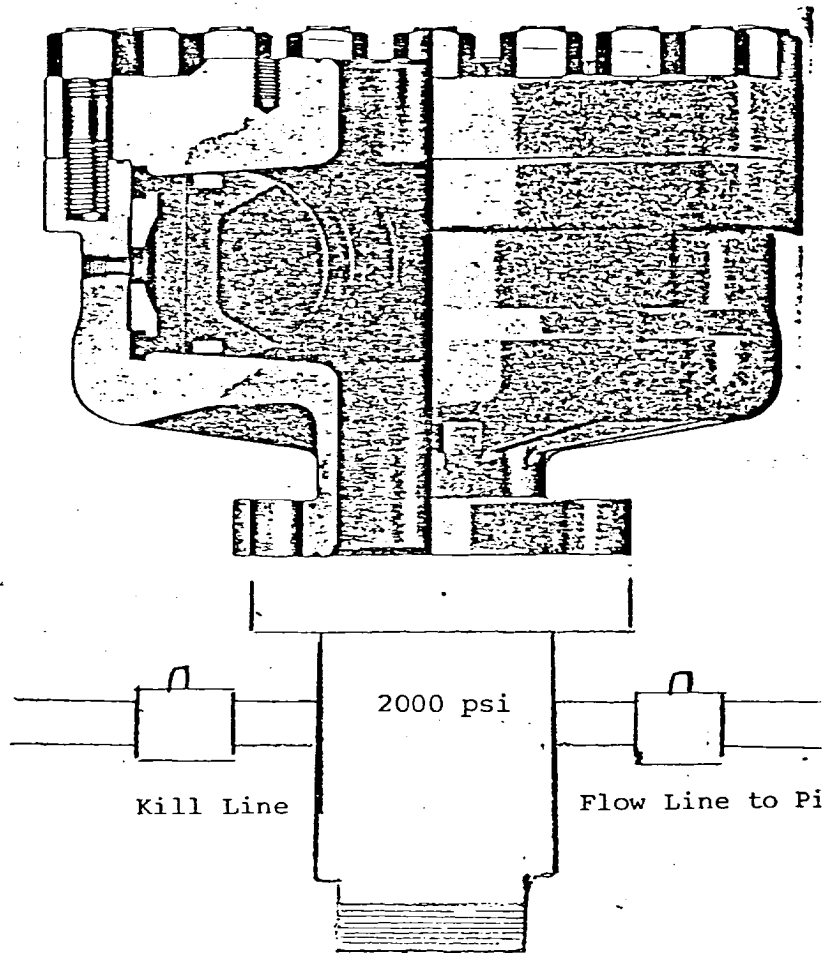
TYPICAL BOP INSTALLATION

SCHEMATIC DIAGRAM

TESTING PROCEDURES

Install BOP after setting surface pipe and pressure test to 1000 psi after drilling out from under surface pipe.

REGAN BLOWOUT PREVENTERS



The Regan Torus Blowout Preventer is used primarily on production and workover rigs for well control up to 3000 PSI working pressure

DESIGN FEATURES

- The Torus Preventer is designed for minimum height to facilitate its use with production and workover rigs.
- The rubber packer will conform to any object in the well bore. Sealing ability is not affected by minor damage to the inner bore.
- The packer will seal on open hole at full working pressure.
- The dual packer design increases the reliability of the preventer since the outer rubber is never exposed to the well bore. Under ordinary service, the outer packer is rarely replaced.

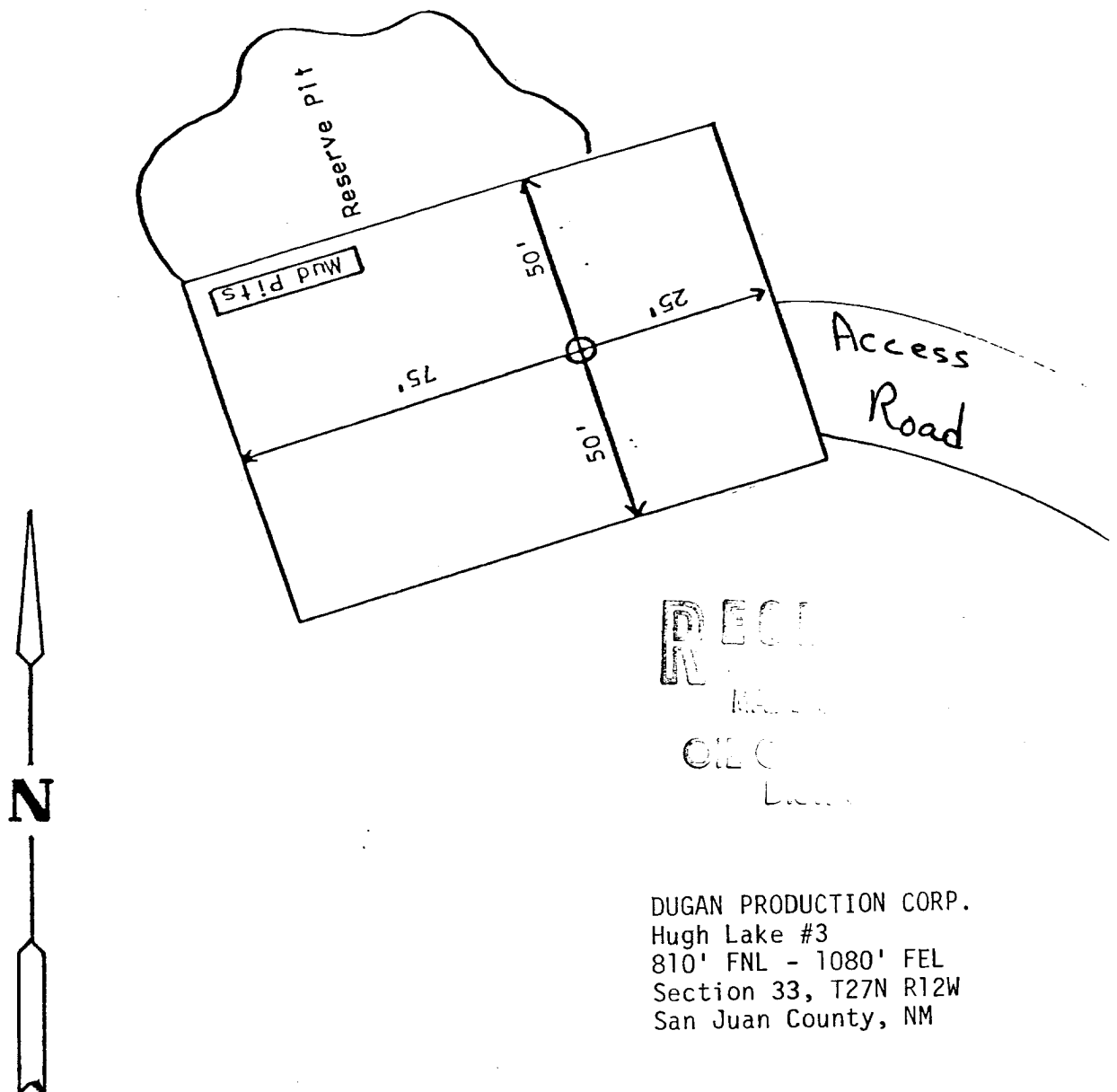
DUGAN PRODUCTION CORP.
Hugh Lake #3
810' FNL - 1080' FEL
Section 33, T27N R12W
San Juan County, NM

TORUS BLOWOUT PREVENTER
PATENTED

SPECIFICATIONS

Nominal Size	Test Pressure (psi)	DIMENSIONS (In.)			Weight (lb.)	End Flanges (L)	R/RX Ring Grooves	Side Outlet
		Outside Diameter	Thru Bore	Overall Height				
6	3000 6000	27 28 1/2	7 1/4 7 1/2	19 1/4 21 1/4	1360 1950	Nom. 6 Nom. 6	45 45	None 2" L.P.

TYPICAL LOCATION LAYOUT FOR PICTURED CLIFFS WELL



NEW MEXICO OIL CONSERVATION COMMISSION
WELL LOCATION AND ACREAGE DEDICATION PLAT

Form C-102
Supersedes C-128
Effective 1-1-65

All distances must be from the outer boundaries of the Section.

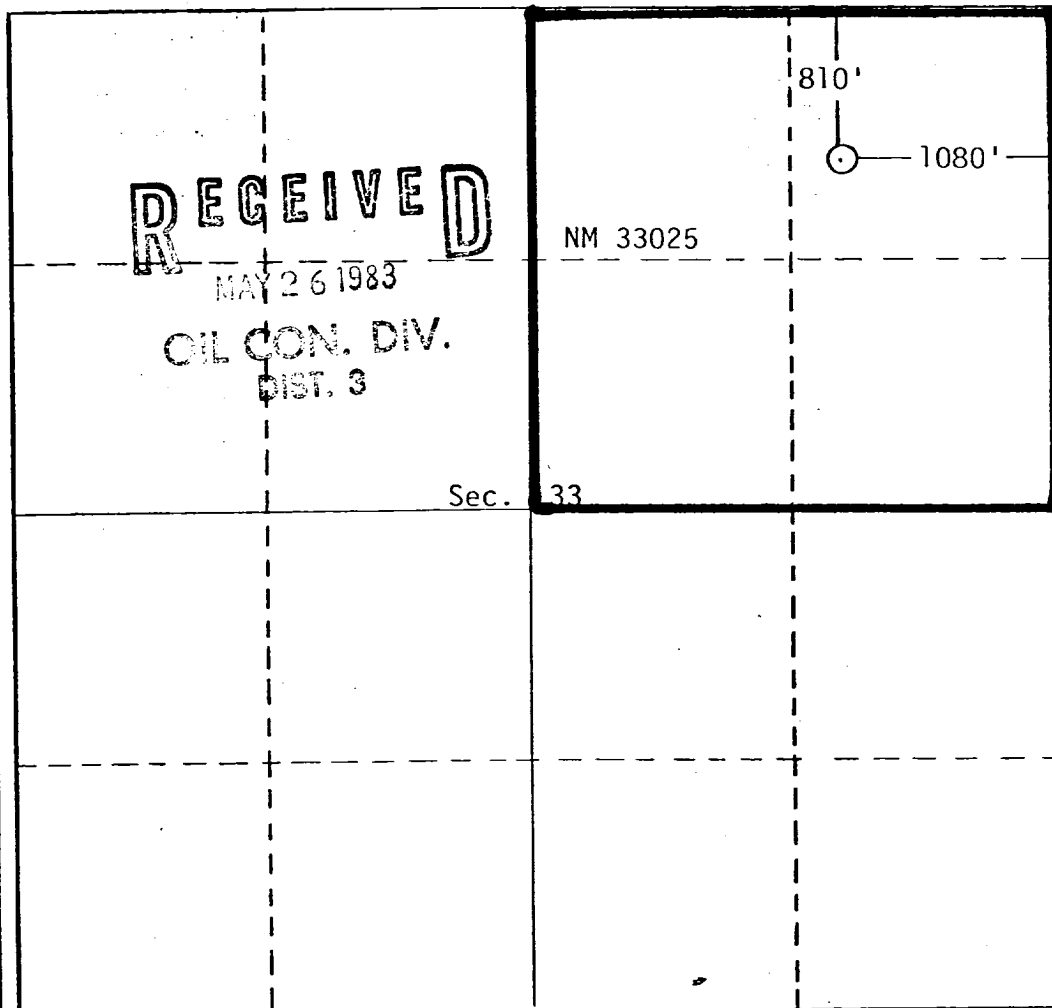
Operator DUGAN PRODUCTION CORP.			Lease Hugh Lake		Well No. 3
Unit Letter A	Section 33	Township 27N	Range 12W	County San Juan	
Actual Footage Location of Well: <div style="display: flex; justify-content: space-between; align-items: center;"> 810 feet from the North line and 1080 feet from the East line </div>					
Ground Level Elev. 5846' GL	Producing Formation Pictured Cliffs	Pool Wildcat Pictured Cliffs		Dedicated Acreage: 160 Acres	

1. Outline the acreage dedicated to the subject well by colored pencil or hachure marks on the plat below.
2. If more than one lease is dedicated to the well, outline each and identify the ownership thereof (both as to working interest and royalty).
3. If more than one lease of different ownership is dedicated to the well, have the interests of all owners been consolidated by communitization, unitization, force-pooling, etc?

☐ Yes ☐ No If answer is "yes," type of consolidation _____

If answer is "no," list the owners and tract descriptions which have actually been consolidated. (Use reverse side of this form if necessary.) _____

No allowable will be assigned to the well until all interests have been consolidated (by communitization, unitization, forced-pooling, or otherwise) or until a non-standard unit, eliminating such interests, has been approved by the Commission.



CERTIFICATION

I hereby certify that the information contained herein is true and complete to the best of my knowledge and belief.

Jim L. Jacobs

Name
Jim L. Jacobs

Position
Geologist

Company
Dugan Production Corp.

Date
5-19-83

I hereby certify that the well location shown on this plat was plotted from field notes of actual surveys made by me or under my supervision, and that the same is true and correct to the best of my knowledge and belief.

Date Surveyed
5-18-83

Registered Professional Engineer
and/or Land Surveyor
Thomas A. Dugan
Thomas A. Dugan

Certificate No.
#2373 PE/LS

0 330 660 990 1320 1650 1980 2310 2640 2000 1500 1000 500 0