

COPIES RECEIVED	
DISTRIBUTION	
SANTA FE	
FILE	
U.S.G.S.	
LAND OFFICE	
OPERATOR	

RECEIVED

5A. Indicate Type of Lease
STATE <input checked="" type="checkbox"/> FEE <input type="checkbox"/>
5. State Oil & Gas Lease No.
B-11017

APPLICATION FOR PERMIT TO DRILL, DEEPEN, OR PLUG BACK

1a. Type of Work	DRILL <input checked="" type="checkbox"/> DEEPEN <input type="checkbox"/> PLUG BACK <input type="checkbox"/>	7. Unit Agreement Name
b. Type of Well	D-L WELL <input checked="" type="checkbox"/> GAS WELL <input type="checkbox"/> OTHER <input type="checkbox"/>	8. Farm or Lease Name
2. Name of Operator	Union Texas Petroleum Corporation	State 16
3. Address of Operator	P. O. Box 808, Farmington, New Mexico 87499	9. Well No.
4. Location of Well	UNIT LETTER 0 LOCATED 946 FEET FROM THE South LINE AND 1840 FEET FROM THE East LINE OF SEC. 16 TWP. 28N RGE. 9W NMPM	10. Field and Pool, or Wildcat
		Undesignated Gallup
		12. County
		San Juan
19. Proposed Depth	6931 ft.	19A. Formation
		Gallup
20. Rotary or C.T.		Rotary
21. Elevations (Show whether DF, RT, etc.)	6301 ft.	22. Approx. Date Work will start
21A. Kind & Status Plug. Bond	Current \$50,000	August 8, 1983
21B. Drilling Contractor		

23.

PROPOSED CASING AND CEMENT PROGRAM

SIZE OF HOLE	SIZE OF CASING	WEIGHT PER FOOT	SETTING DEPTH	SACKS OF CEMENT	EST. TOP
13-3/4"	9-5/8"	36.0#	300 ft.	212	Circulated
8-3/4"	7"	26.0#	6000 ft.	670	Circulated
6-1/4"	4-1/2"	11.6#	5800-6931 ft.	150	Top of liner

We desire to drill 13-3/4" surface hole to approx. 300 ft. using natural mud as a circulating medium. Run new 9-5/8" casing to TD. Cement with approx. 212 sx. of Class "B" cement circulated to the surface. Pressure test the casing to approx. 800 PSIG for 10 minutes. Drill 8-3/4" hole to approx. 6000 ft. using a starch base, permaloid, nondispersed mud as the circulating medium. Log the well. Run new 7" casing to TD with a DV tool at approx. 2000 ft. Cement 1st stage with approx. 295 sx. of 65/35/6 followed by approx. 100 sx. of Class "B" cement. Cement the second stage with approx. 175 sx. 65/35/12 followed by approx. 100 sx. of Class "B". Circulate cement to surface. Drill out the DV tool. Pressure test the pipe to 1500 PSIG for 10 minutes. Drill out with 6-1/4" bit to approx. 6931 ft. using natural gas as the circulating medium. Log the well. Run new 4-1/2" casing to TD and cement with approx. 150 sx. of 50/50 Poz mix. W.O.C. Perforate and fracture the Gallup zone. Clean the well up. Run new 2-3/8", EUE, 4.7#, J-55 tubing to the Gallup zone. Run rod pump and rods. Set a pumping unit and tanks. Test the well and connect to a gathering system. The gas from this well has previously been dedicated to a transporter.

NOTE: Actual cement volumes will be calculated from caliper log.

IN ABOVE SPACE DESCRIBE PROPOSED PROGRAM; IF PROPOSAL IS TO DEEPEN OR PLUG BACK, GIVE DATA ON PRESENT PRODUCTIVE ZONE AND PROPOSED NEW PRODUCTIVE ZONE. GIVE BLOWOUT PREVENTER PROGRAM, IF ANY.

I hereby certify that the information above is true and complete to the best of my knowledge and belief.

Signed W. K. Cooper Title Field Operations Manager Date July 8, 1983

(This space for State Use)

APPROVED BY 3rd J. Day TITLE SUPERVISOR DISTRICT # 3 DATE JUL 11 1983

CONDITIONS OF APPROVAL, IF ANY:

APPROVAL EXPIRES 1-11-84
UNLESS DRILLING IS COMMENCED.
SPUD NOTICE MUST BE SUBMITTED
WITHIN 10 DAYS.

All distances must be from the outer boundaries of the Section.

Operator UNION TEXAS PETROLEUM CORPORATION		Lease STATE 16		Well No. 4	
Unit Letter 0	Section 16	Township 28 NORTH	Range 9 WEST	County SAN JUAN	
Actual Footage Location of Well: 946 feet from the SOUTH line and 1840 feet from the EAST line					
Ground Level Elev. 6301	Producing Formation GALLUP		Pool UNDESIGNATED		Dedicated Acreage SW SE 40.00 Acres

1. Outline the acreage dedicated to the subject well by colored pencil or hatchure marks on the plat below.
2. If more than one lease is dedicated to the well, outline each and identify the ownership thereof (both as to working interest and royalty).
3. If more than one lease of different ownership is dedicated to the well, have the interests of all owners been consolidated by communitization, unitization, force-pooling, etc?

☐ Yes ☐ No If answer is "yes," type of consolidation _____

If answer is "no," list the owners and tract descriptions which have actually been consolidated. (Use reverse side of this form if necessary.) _____

No allowable will be assigned to the well until all interests have been consolidated (by communitization, unitization, forced-pooling, or otherwise) or until a non-standard unit, eliminating such interests, has been approved by the Division.

		16	

946'

CERTIFICATION

I hereby certify that the information contained herein is true and complete to the best of my knowledge and belief.

Name

Rudy D. Motto

Position

Area Operations Manager

Company

Union Texas Petroleum Corp.

Date

June 9, 1983

I hereby certify that the well location shown on this plat was plotted from field notes, actual surveys made by me or under my supervision, and that the same is true and correct to the best of my knowledge and belief.

Date Surveyed

June 6, 1983

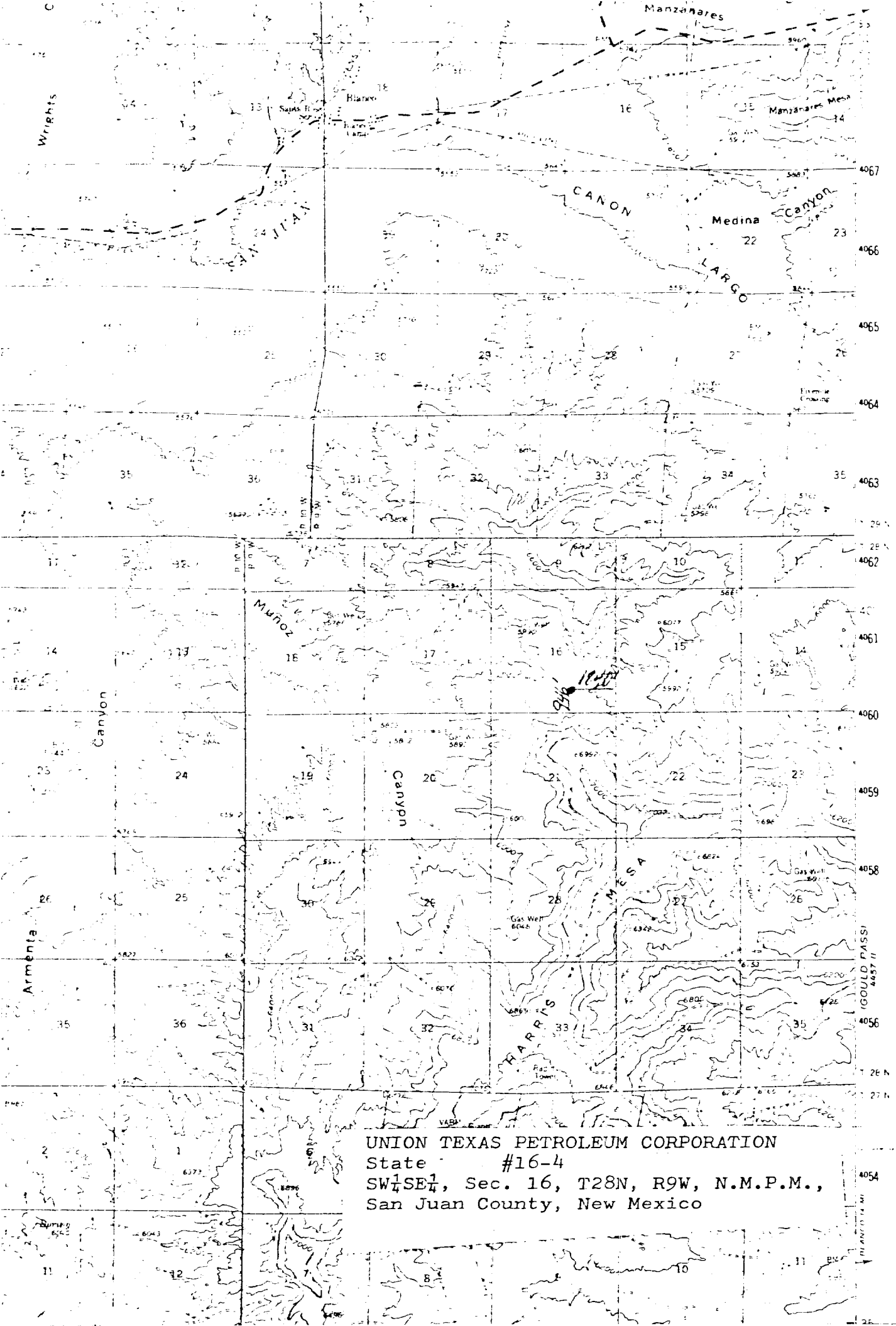
Registered Professional Engineer and/or Land Surveyor

Michael Daly

Certificate No.

5992

330 320 310 300 290 280 270 260 250 240 230 220 210 200 190 180 170 160 150 140 130 120 110 100 90 80 70 60 50 40 30 20 10 0



UNION TEXAS PETROLEUM CORPORATION
State #16-4
SW $\frac{1}{4}$ SE $\frac{1}{4}$, Sec. 16, T28N, R9W, N.M.P.M.,
San Juan County, New Mexico