

UNITED STATES
DEPARTMENT OF THE INTERIOR
GEOLOGICAL SURVEY

30-045-25872

APPLICATION FOR PERMIT TO DRILL, DEEPEN, OR PLUG BACK

1. TYPE OF WORK
DRILL ☒ DEEPEN ☐ PLUG BACK ☐2. TYPE OF WELL
OIL WELL ☐ GAS WELL ☒ OTHER ☐ SINGLE ZONE ☒ MULTIPLE ZONE ☐3. NAME OF OPERATOR
Southland Royalty Company

4. ADDRESS OF OPERATOR

P. O. Drawer 570, Farmington, New Mexico 87499

5. LOCATION OF WELL (Report location clearly and in accordance with any State requirements.)

At surface
1040' FNL & 1510' FEL

At proposed prod. zone

6. DISTANCE IN MILES AND DIRECTION FROM NEAREST TOWN OR POST OFFICE*

8 miles South of Blanco, New Mexico

7. DISTANCE FROM PROPOSED*
LOCATION TO NEAREST
PROPERTY OR LEASE LINE, FT.
(Also to nearest drg. unit line, if any)

250'

8. DISTANCE FROM PROPOSED LOCATION*
TO NEAREST WELL, DRILLING, COMPLETED,
OR APPLIED FOR, ON THIS LEASE, FT.

300'

9. ELEVATIONS (Show whether DF, RT, GR, etc.)

5963' GL

10. SUBJECT TO COMPLIANCE WITH ATTACHED
"GENERAL REQUIREMENTS"

11. PROPOSED CASING AND CEMENTING PROGRAM

12. SIZE OF HOLE

13. SIZE OF CASING

14. WEIGHT PER FOOT

15. SETTING DEPTH

16. QUANTITY OF CEMENT

17. QUANTITY OF CEMENT

18. QUANTITY OF CEMENT

19. QUANTITY OF CEMENT

20. QUANTITY OF CEMENT

21. QUANTITY OF CEMENT

22. QUANTITY OF CEMENT

23. QUANTITY OF CEMENT

24. QUANTITY OF CEMENT

25. QUANTITY OF CEMENT

26. QUANTITY OF CEMENT

27. QUANTITY OF CEMENT

28. QUANTITY OF CEMENT

29. QUANTITY OF CEMENT

30. QUANTITY OF CEMENT

31. QUANTITY OF CEMENT

32. QUANTITY OF CEMENT

33. QUANTITY OF CEMENT

34. QUANTITY OF CEMENT

35. QUANTITY OF CEMENT

36. QUANTITY OF CEMENT

37. QUANTITY OF CEMENT

38. QUANTITY OF CEMENT

39. QUANTITY OF CEMENT

40. QUANTITY OF CEMENT

41. QUANTITY OF CEMENT

42. QUANTITY OF CEMENT

43. QUANTITY OF CEMENT

44. QUANTITY OF CEMENT

45. QUANTITY OF CEMENT

46. QUANTITY OF CEMENT

47. QUANTITY OF CEMENT

48. QUANTITY OF CEMENT

49. QUANTITY OF CEMENT

50. QUANTITY OF CEMENT

51. QUANTITY OF CEMENT

52. QUANTITY OF CEMENT

53. QUANTITY OF CEMENT

54. QUANTITY OF CEMENT

55. QUANTITY OF CEMENT

5. LEASE DESIGNATION AND SERIAL NO.

SF-077874

6. IF INDIAN, ALLOTTEE OR TRIBE NAME

7. UNIT AGREEMENT NAME

8. FARM OR LEASE NAME

Hanks

9. WELL NO.

27

10. FIELD AND POOL, OR WILDCAT

Otero Chacra

11. SEC., T., R., M., OR BLK.
AND SURVEY OR AREA

Section 2, T27N, R10W

12. COUNTY OR PARISH

San Juan

13. STATE

New Mexico

14. NO. OF ACRES IN LEASE

2585.94

15. NO. OF ACRES ASSIGNED
TO THIS WELL

160.61.76

16. PROPOSED DEPTH

3350'

17. ROTARY OR CABLE TOOLS

Rotary

18. APPROX. DATE WORK WILL START*

February 15, 1984

19. This action is subject to administrative
appeal pursuant to 30 CFR 290.

20. QUANTITY OF CEMENT

165 cu.ft. (Circ to surface)

21. QUANTITY OF CEMENT

997 cu.ft. (cover Ojo Alamo)

Surface formation is Nacimiento.

Top of Ojo Alamo sand is at 840'.

Top of Pictured Cliffs sand is at 1900'.

Fresh water mud will be used to drill from surface to total depth.

It is anticipated that an IES log will be run from total depth to surface casing, and
an GR-CDL will be run to 1400'.

No abnormal pressures or poisonous gases are anticipated in this well.

It is expected that this well will be drilled before March 31, 1984.

This depends on time required for approvals, rig availability and the weather.

Gas is dedicated.

18. ABOVE SPACE DESCRIBE PROPOSED PROGRAM: If proposal is to deepen or plug back, give data on present productive zone and proposed new productive zone. If proposal is to drill or deepen directionally, give pertinent data on subsurface locations and measured and true vertical depths. Give blowout preventer program, if any.

24. *R. E. Fiddle*

SIGNED

TITLE District Engineer

DATE Jan. 11, 1984

(This space for Federal or State office use)

PERMIT NO.

APPROVAL DATE

APPROVAL BY

TITLE

CONDITIONS OF APPROVAL, IF ANY:

RECEIVED

JAN 27 1984

OIL CON. DIV. NMOC

DIST. 0

| |
|--------------------------|
| APPROVED |
| AS AMENDED |
| DATE JAN 25 1984 |
| <i>R. E. Fiddle</i> |
| ASST AREA MANAGER |
| FARMINGTON RESOURCE AREA |

All distances must be from the outer boundaries of the Section.


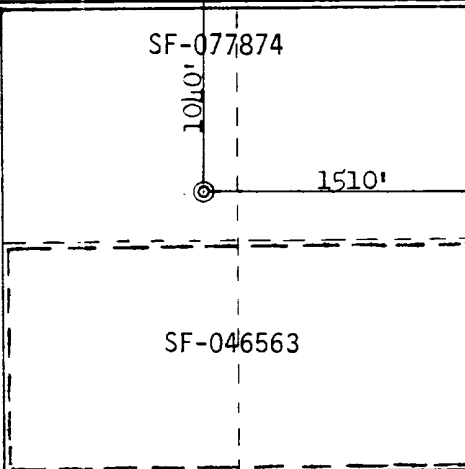
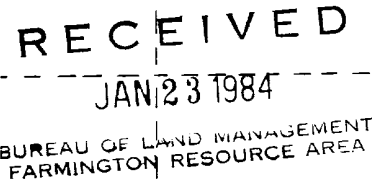
| | | | | | |
|--|--------------------------------------|------------------------|-----------------------|--|-----------------------|
| Operator SOUTHLAND ROYALTY COMPANY | | | Lease HANKS | | Well No. 27 |
| Unit Letter B | Section 2 | Township 27N | Range 10W | County San Juan | |
| Actual Footage Location of Well: 1040 feet from the North line and 1510 feet from the East line | | | | | |
| Ground Level Elev. 5963' GL | Producing Formation Chacra | Pool Otero | | Dedicated Acreage: 160/61.26 Acres | |

1. Outline the acreage dedicated to the subject well by colored pencil or hachure marks on the plat below.
2. If more than one lease is dedicated to the well, outline each and identify the ownership thereof (both as to working interest and royalty).
3. If more than one lease of different ownership is dedicated to the well, have the interests of all owners been consolidated by communitization, unitization, force-pooling, etc?

☐ Yes ☐ No If answer is "yes," type of consolidation Communitization

If answer is "no," list the owners and tract descriptions which have actually been consolidated. (Use reverse side of this form if necessary.) _____

No allowable will be assigned to the well until all interests have been consolidated (by communitization, unitization, forced-pooling, or otherwise) or until a non-standard unit, eliminating such interests, has been approved by the Commission.

| | |
|---|--|
|  |  |
| |  |

Scale: 1"=1000'

CERTIFICATION

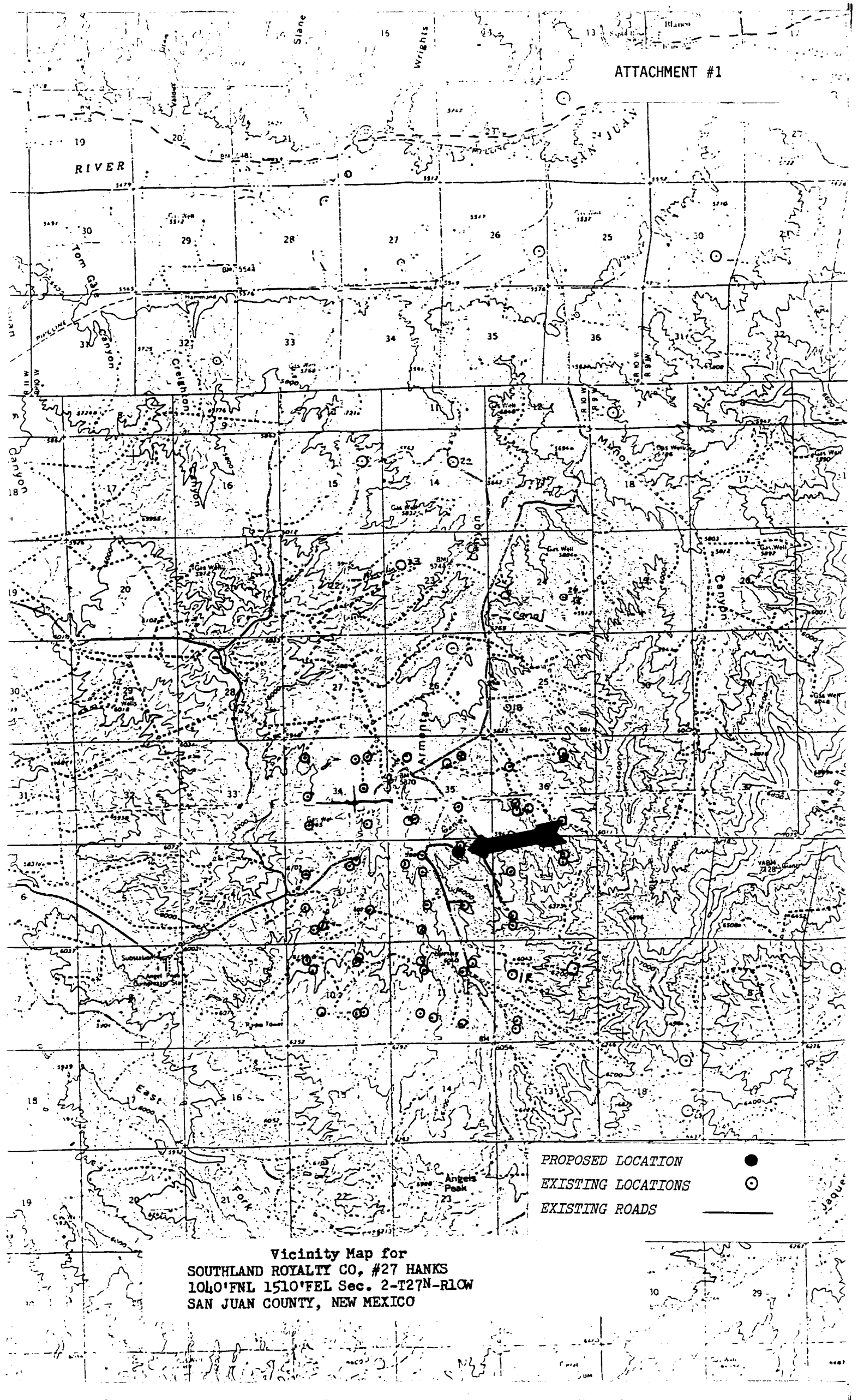
I hereby certify that the information contained herein is true and complete to the best of my knowledge and belief.

R. E. Fielder

Name
R. E. Fielder
Position
District Engineer
Company
Southland Royalty Company
Date
January 11, 1984

I hereby certify that the well location shown on this plat was plotted from field notes of actual surveys made by me or under my supervision, and that the same is true and correct to the best of my knowledge and belief.

Date Surveyed
December 9, 1983
Registered Professional Engineer and Land Surveyor
Fred B. Kerr Jr.
Fred B. Kerr Jr.
Certificate No. **3950**



Vicinity Map for
SOUTHLAND ROYALTY CO. #27 HANKS
1040'FNL 1510'FEL Sec. 2-T27N-R10W
SAN JUAN COUNTY, NEW MEXICO

PROPOSED LOCATION
EXISTING LOCATIONS
EXISTING ROADS