

UNITED STATES  
DEPARTMENT OF THE INTERIOR  
GEOLOGICAL SURVEY

## APPLICATION FOR PERMIT TO DRILL, DEEPEN, OR PLUG BACK

## 1a. TYPE OF WORK

DRILL ☒DEEPEN ☐PLUG BACK ☐

## b. TYPE OF WELL

OIL  
WELL ☐GAS  
WELL ☒

OTHER

SINGLE  
ZONE ☒MULTIPLE  
ZONE ☐

## 2. NAME OF OPERATOR

Tenneco Oil Company

## 3. ADDRESS OF OPERATOR

P.O. Box 3249, Englewood, CO 80155

## 4. LOCATION OF WELL (Report location clearly and in accordance with any State requirements.)\*

At surface

1450' FNL, 1185' FWL

At proposed prod. zone

## 14. DISTANCE IN MILES AND DIRECTION FROM NEAREST TOWN OR POST OFFICE\*

Approximately 11 mi SE of Blanco, NM

## 15. DISTANCE FROM PROPOSED\*

LOCATION TO NEAREST

PROPERTY OR LEASE LINE, FT.

(Also to nearest drlg. unit line, if any)

1185'

## 18. DISTANCE FROM PROPOSED LOCATION\*

TO NEAREST WELL, DRILLING COMPLETED,  
OR APPLIED FOR, ON THIS LEASE, FT.

## 16. NO. OF ACRES IN LEASE

1550.26

## 17. NO. OF ACRES ASSIGNED

TO THIS WELL

320

## 19. PROPOSED DEPTH

+ 7350'

## 20. ROTARY OR CABLE TOOLS

Rotary

## 21. ELEVATIONS (Show whether DF, RT, GR, etc.)

6355' GR

## 22. APPROX. DATE WORK WILL START\*

ASAP

## 23.

PROPOSED CASING AND CEMENTING PROGRAM

This action is subject to administrative  
appeal pursuant to 30 CFR 290.

SIZE OF HOLE	SIZE OF CASING	WEIGHT PER FOOT	SETTING DEPTH	QUANTITY OF CEMENT
12-1/4"	9-5/8"	36#	+ 300'	Circulate to surface
8-3/4"	7"	23#	+ 3420'	Circulate to surface - 2 stages
6-1/4"	4-1/2"	10.5#	+ 7000'	Circulate to liner top
6-1/4"	4-1/2"	11.6#	+ 7250'	Circulate to liner top

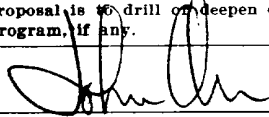
See Attached

RECEIVED  
MAY 15 1984  
OIL CON. DIV.  
DIST. 3

IN ABOVE SPACE DESCRIBE PROPOSED PROGRAM: If proposal is to deepen or plug back, give data on present productive zone and proposed new productive zone. If proposal is to drill or deepen directionally, give pertinent data on subsurface locations and measured and true vertical depths. Give blowout preventer program, if any.

## 24.

SIGNED



TITLE Regulatory Analyst I

(This space for Federal or State office use)

PERMIT NO.

APPROVAL DATE

APPROVED BY

TITLE

CONDITIONS OF APPROVAL, IF ANY:

APPROVED  
AS AMENDED

MAY 14 1984

AREA MANAGER  
FARMINGTON RESOURCE AREA

NMOC

All distances must be from the outer boundaries of the Section.

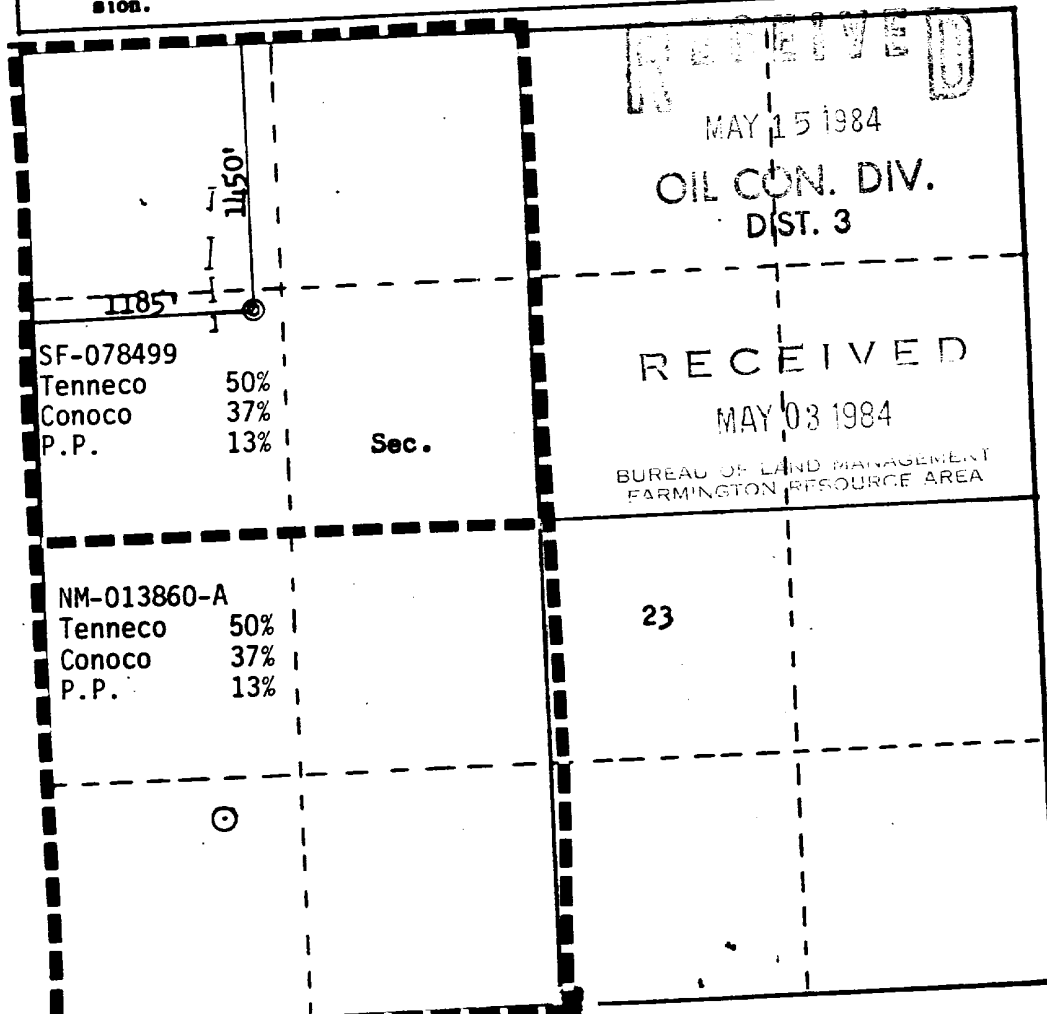
Operator <b>TENNECO OIL COMPANY</b>		Lease <b>RUSSELL COM</b>		Well No. <b>1E</b>
Unit Letter <b>E</b>	Section <b>23</b>	Township <b>28N</b>	Range <b>8W</b>	County <b>San Juan</b>
Actual Footage Location of Well: <b>11450</b> feet from the <b>North</b> line and <b>1185</b> feet from the <b>West</b> line				
Ground Level Elev: <b>6355</b>	Producing Formation <b>Dakota</b>		Pool <b>Basin Dakota</b>	Dedicated Acreage: <b>320</b> Acres

- Outline the acreage dedicated to the subject well by colored pencil or hachure marks on the plat below.
- If more than one lease is dedicated to the well, outline each and identify the ownership thereof (both as to working interest and royalty).
- If more than one lease of different ownership is dedicated to the well, have the interests of all owners been consolidated by communitization, unitization, force-pooling, etc?

☒ Yes ☐ No If answer is "yes," type of consolidation Communitization

If answer is "no," list the owners and tract descriptions which have actually been consolidated. (Use reverse side of this form if necessary.)

No allowable will be assigned to the well until all interests have been consolidated (by communitization, unitization, forced-pooling, or otherwise) or until a non-standard unit, eliminating such interests, has been approved by the Commission.



CERTIFICATION

I hereby certify that the information contained herein is true and complete to the best of my knowledge and belief.

*John Orr*

Name

John Orr

Position

Regulatory Analyst II

Company

Tenneco Oil Company

Date

4/30/84

I hereby certify that the well location shown on this plat was plotted from field notes of actual surveys made by me or under my supervision, and that the same is true and correct to the best of my knowledge and belief.

Date Surveyed

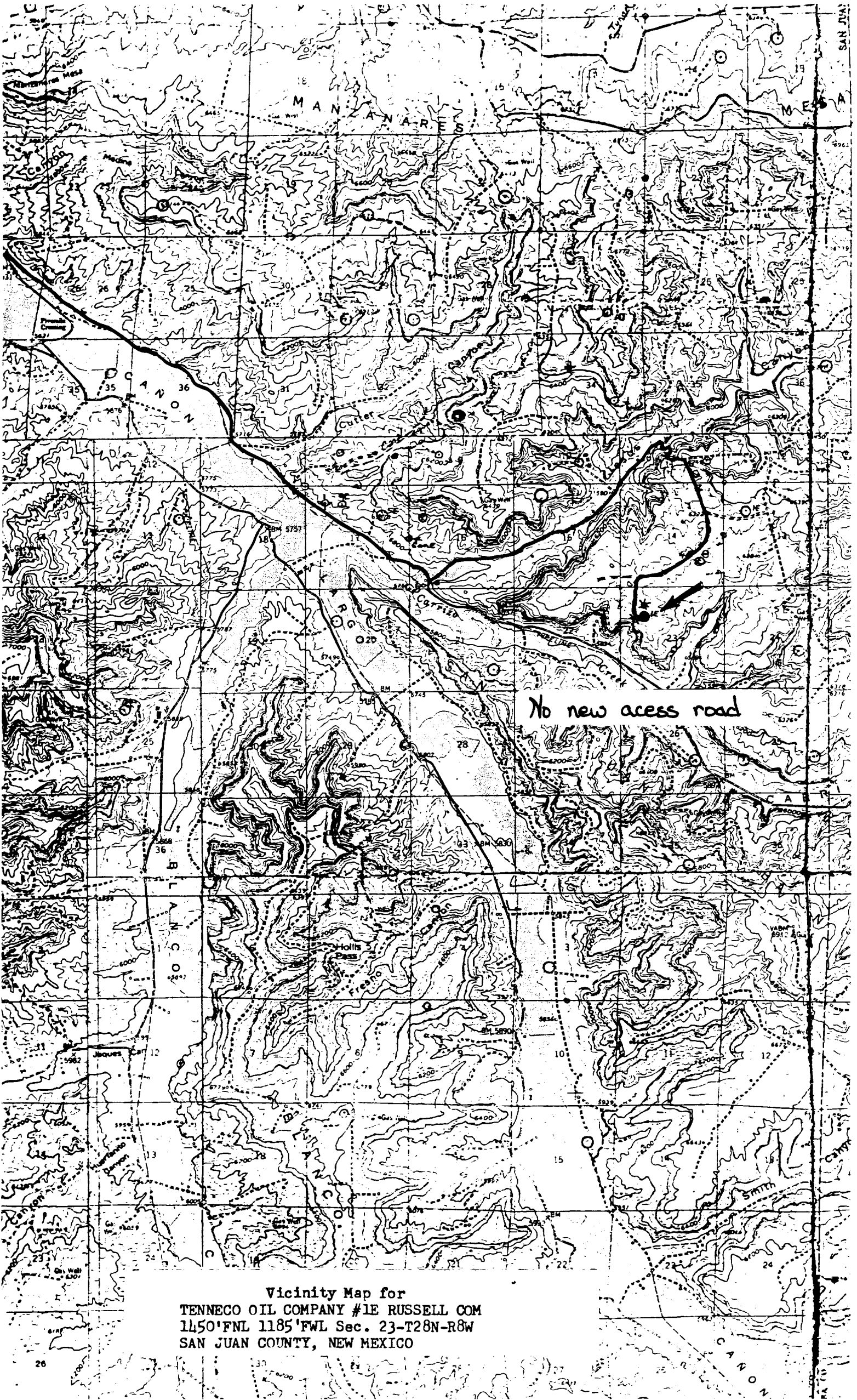
March 20, 1984

Registered Professional Engineer and Land Surveyor

*Fred S. Kerr Jr.*  
Fred S. Kerr Jr.

Certificate No. 4220

3950



Vicinity Map for  
TENNECO OIL COMPANY #1E RUSSELL COM  
1450'FNL 1185'FWL Sec. 23-T28N-R8W  
SAN JUAN COUNTY, NEW MEXICO